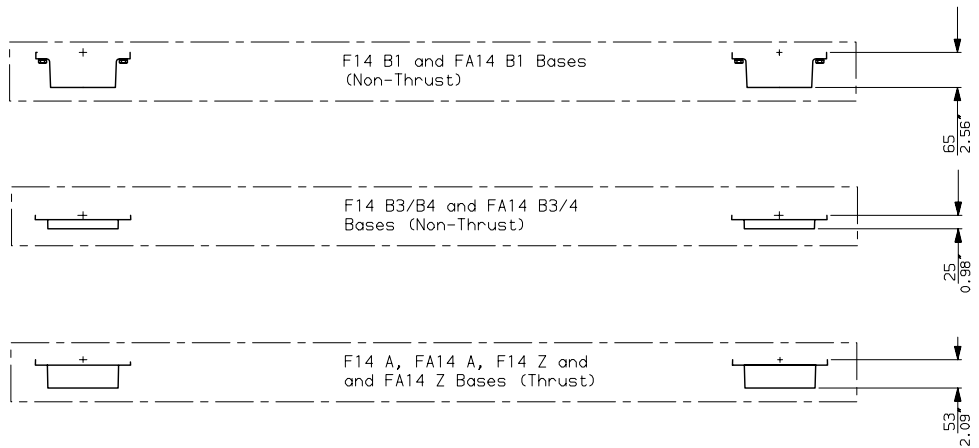
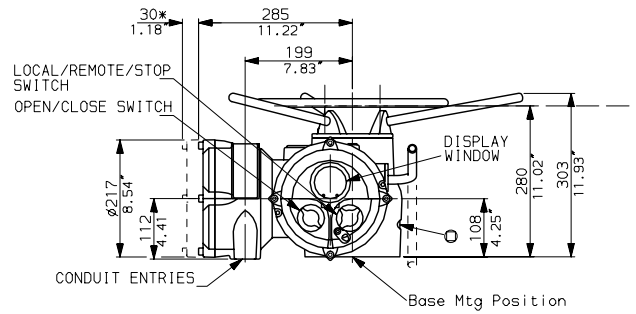
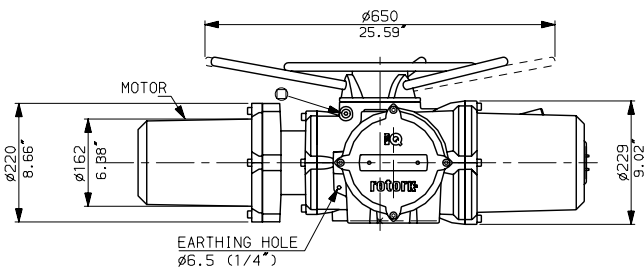
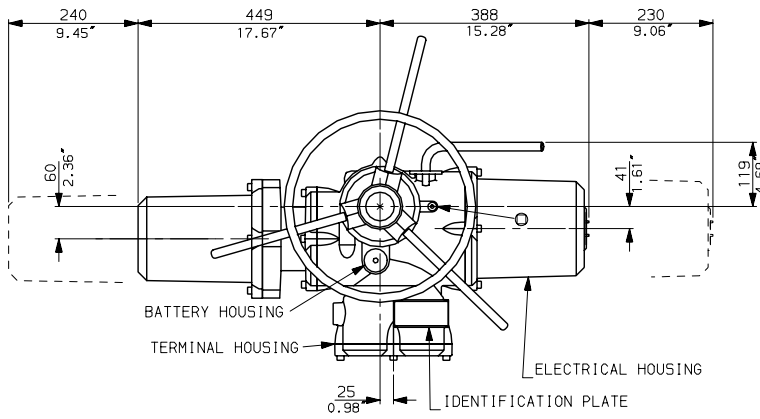
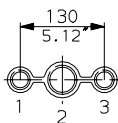


IQ20 DC WITH STANDARD HANDWHEEL



CONDUIT ENTRIES



Nos.1 & 3 TAPPED 1" NPT
No.2 TAPPED 1 1/2" NPT
STANDARD ALTERNATIVES IF SPECIFIED
2 X M25, 1 X M40
2 X PG16, 1 X PG29

NOTES

Three BASE options are detailed to suit the relevant Coupling arrangement.
The required BASE for the SIDE & END views should be loaded to position indicated.

rotork

Rotork Controls Ltd.
Bath, England BA1 3JQ
Bath (01225) 733200

IQ20 DC (THW) DATA

Date 231104

Scale 1:12