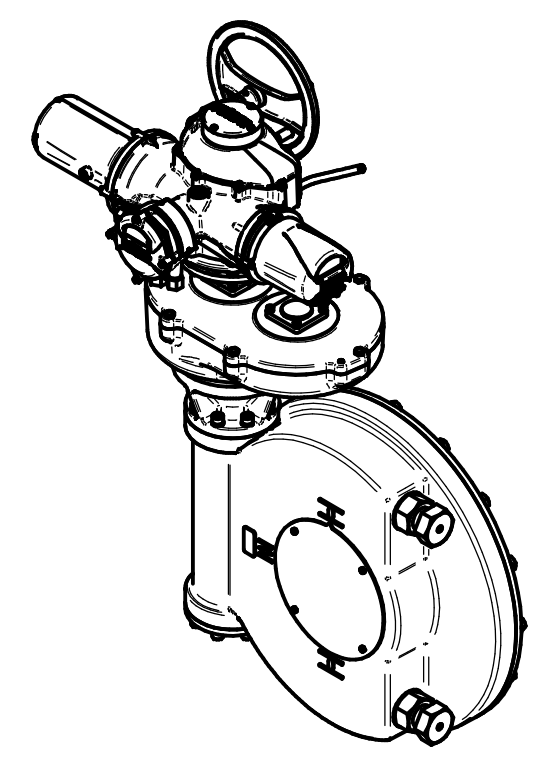
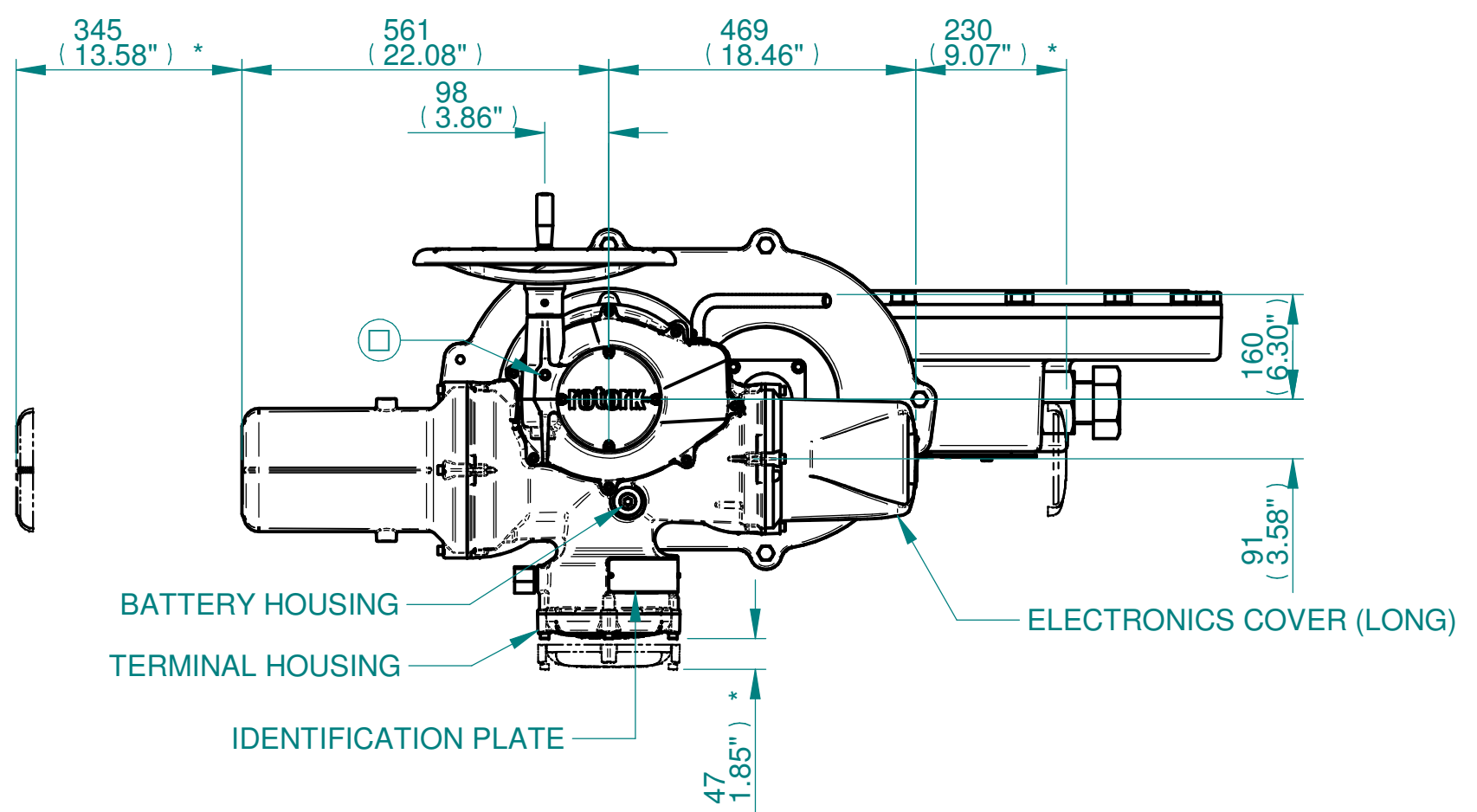

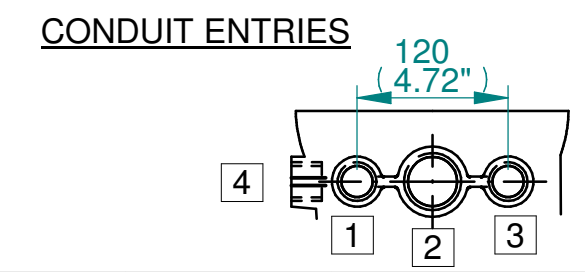


H
G
F
E
D
C
B
A

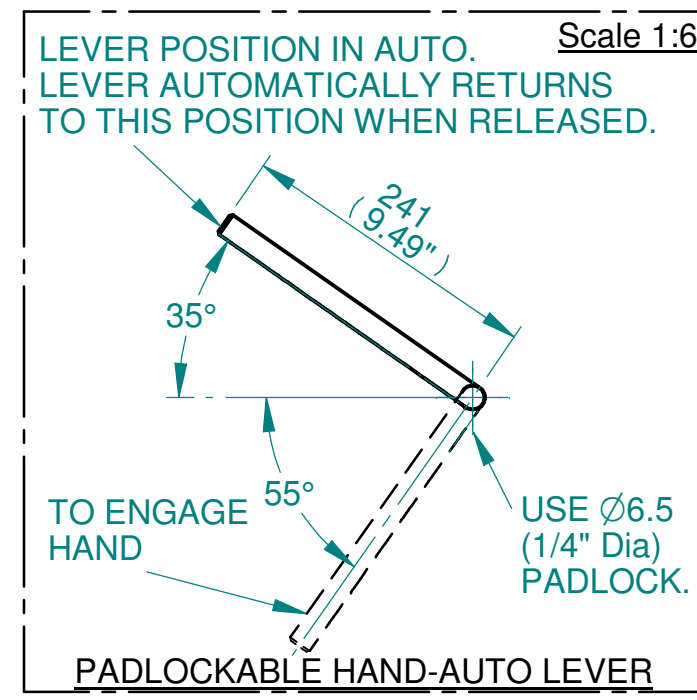
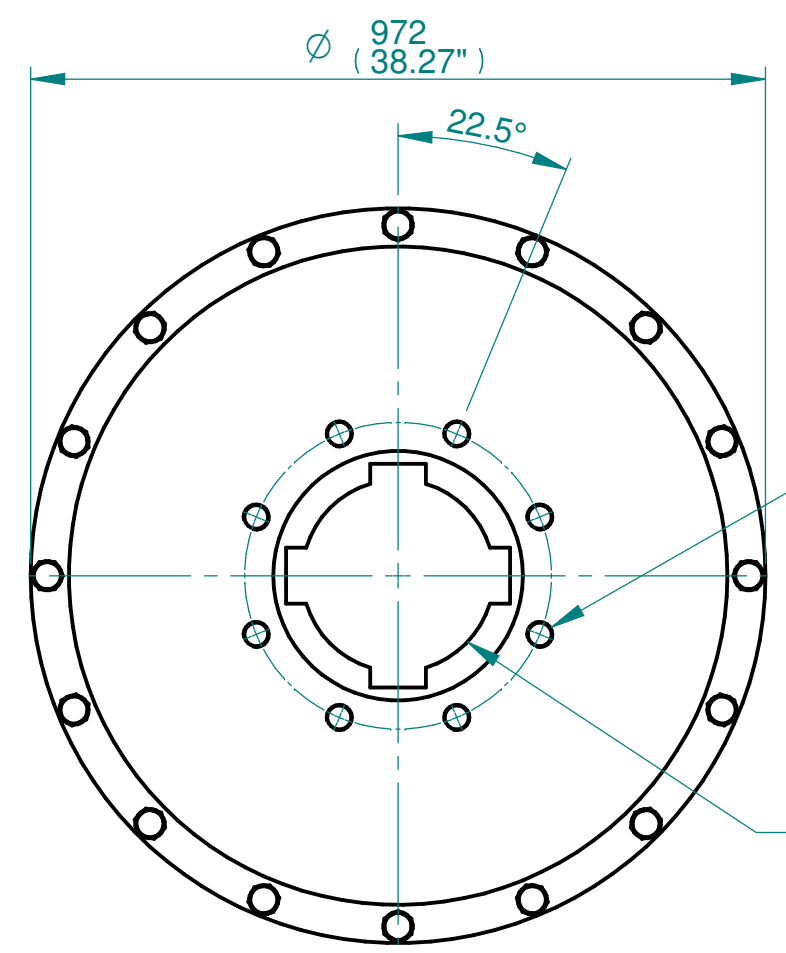
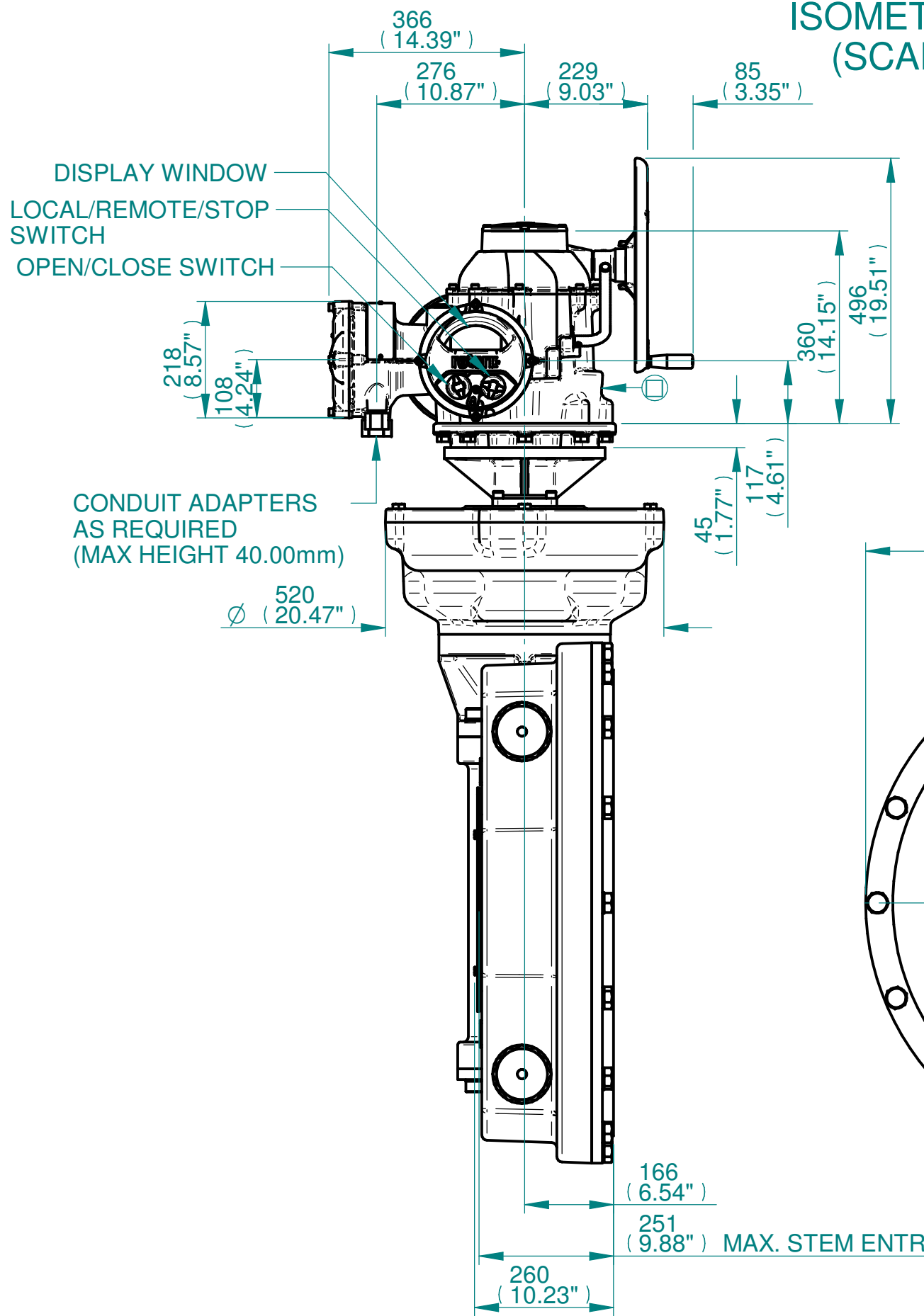
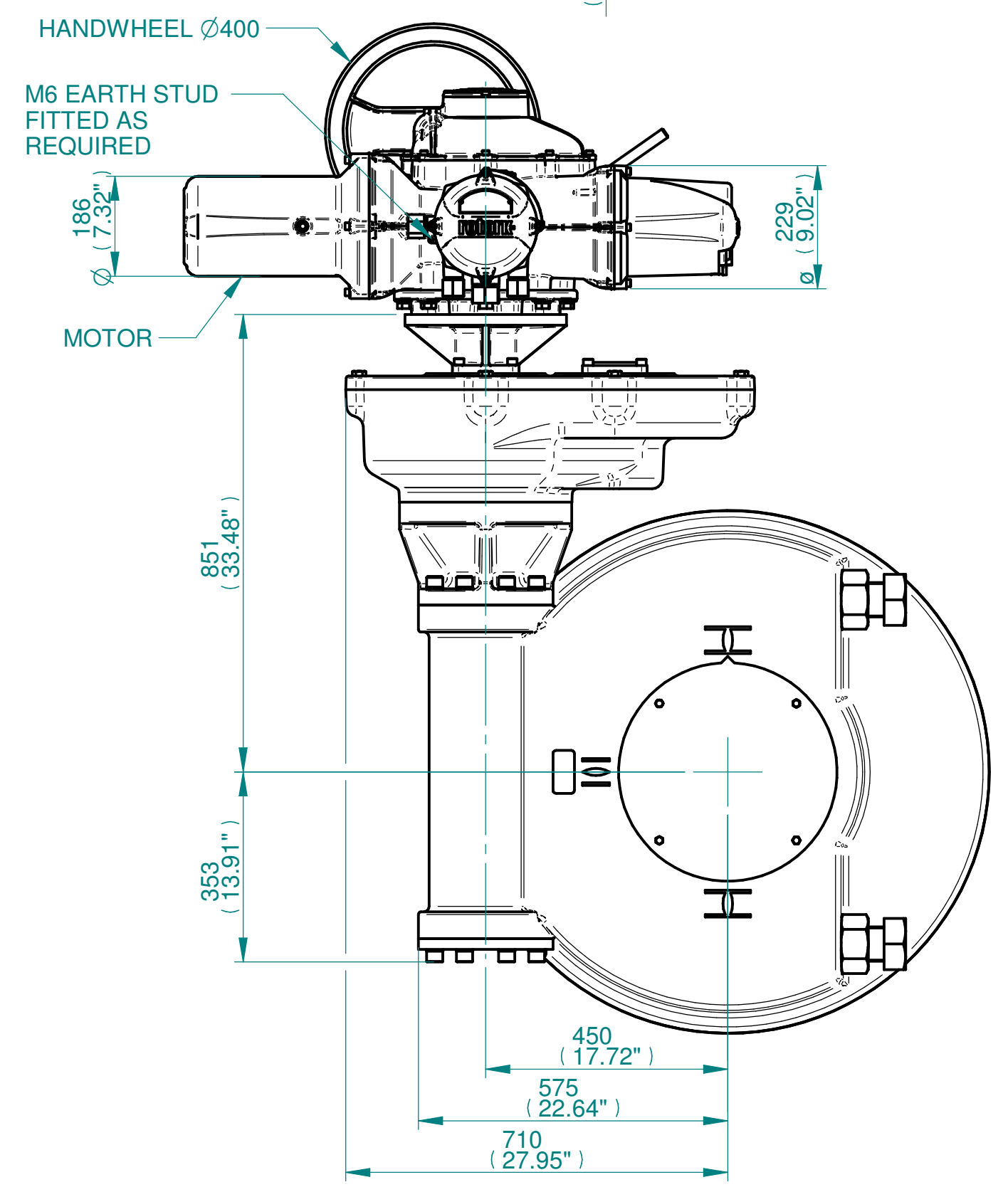


ISOMETRIC VIEW
(SCALE 1:20)

NOTES:
 :DIMENSIONS WITH "*" INDICATE COVER REMOVAL ALLOWANCE
 :NETT WEIGHT = 1310kg/2888lbs
 :  = OIL FILLER/DRAIN PLUG
 :THE INTERFACE PROVIDED FOR MOUNTING THE ACTUATOR OR SECOND STAGE GEARBOX ONTO THE VALVE SHOULD CONFORM TO GOOD ENGINEERING PRACTICES, ENSURING ADEQUATELY TOLERANCED LIMITS FOR PARALLELISM, PERPENDICULARITY AND CONCENTRICITY.
 :ROTORK CANNOT BE HELD LIABLE FOR DAMAGE TO OUR EQUIPMENT CAUSED BY EXCESSIVE LOADING FROM COVER TUBES. (SEE ALSO PUB000-124)



	Hole 1	Hole 2	Hole 3	Hole 4
Size	As Required	As Required	As Required	As Required
Plugged	As Required	As Required	As Required	As Required
Gland	As Required	As Required	As Required	As Required

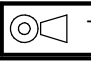


SEE GEARBOX OUTPUT FLANGE OPTIONS TABLE
 SEE MAXIMUM BORE & KEY TABLE

3D Models are available in various formats under the same drawing number

Actuator Size: IQ70/90/95 IW12 & 126IR4		Gearbox output flange options								Maximum Bore & Key		
Title IQ70/90/95, SIDE HANDWHEEL, IW12IR4 / IW126IR4, F/FA35,40 & 48,Ratios 240 - 1120:1 Installation Details Drawn TED Checked NJC Date 18-AUG-14 Ref SALES Project Ref QUOTATION	Designation	F35	F40	F48	-	FA35	FA40	FA48	-	Key form	Ø Bore	Key size
	No. Holes	8	8	12 NOT SHOWN	-	8	8	12 NOT SHOWN	-	Rectangle (BS4235)	272	63 X 32
	Hole size	M30	M36	M36	-	1" UNC	1-1/4" UNC	1-1/4" UNC	-	Rectangle (ANSI B17.1)	10-1/4"	2-1/2 X 1-3/4"
	PCD	356	406	483	-	14"	16"	19"	-	Square (ANSI B17.1)	9-1/2"	2-1/2" SQ

Issue	Description
3	OUTPUT FLANGE CHANGE

Scale: 1:10  THIRD ANGLE PROJECTION

Drawing Number	Issue No	Sheet No
I15SHWIW12IR4STD	3	1 of 1

rotork
 www.rotork.com
 Rotork Controls Limited
 Bath, BA1 3JQ, England.
 Telephone 01225-733200

1 2 3 4 5 6 7 8 9 10 11 12