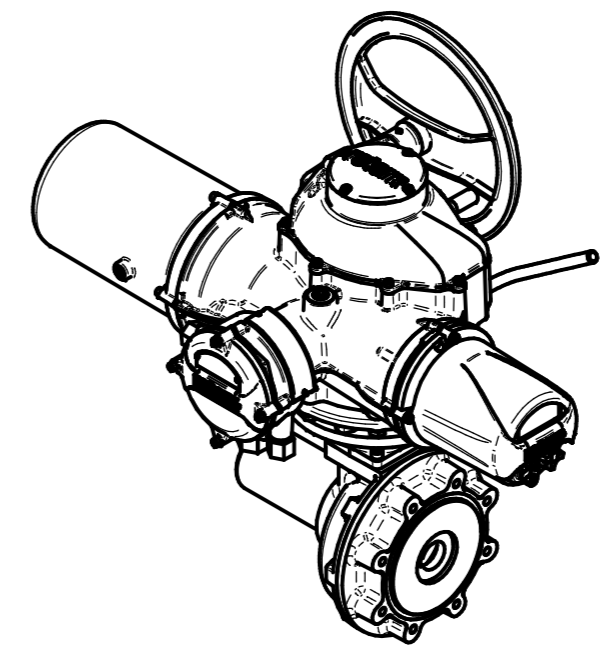
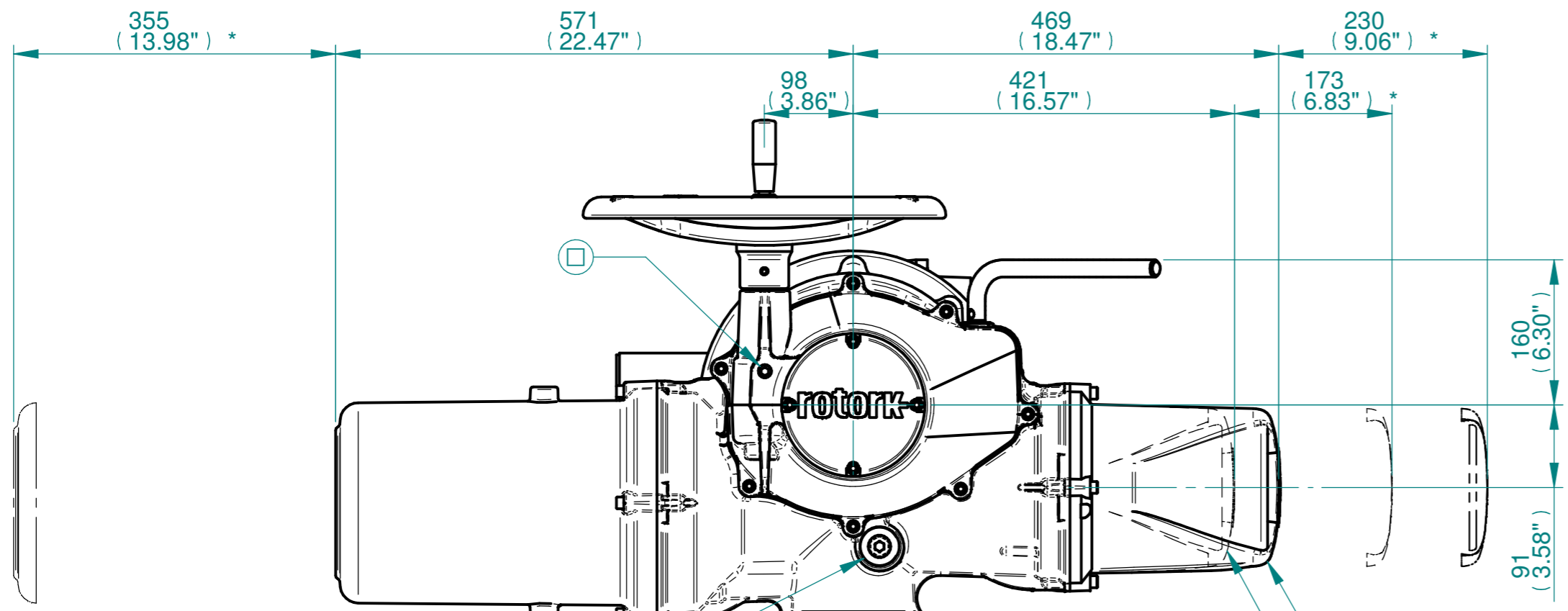


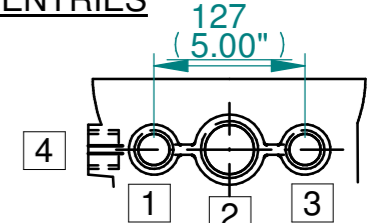
H  
G  
F  
E  
D  
C  
B  
A



ISOMETRIC VIEW (SCALE 1:12)

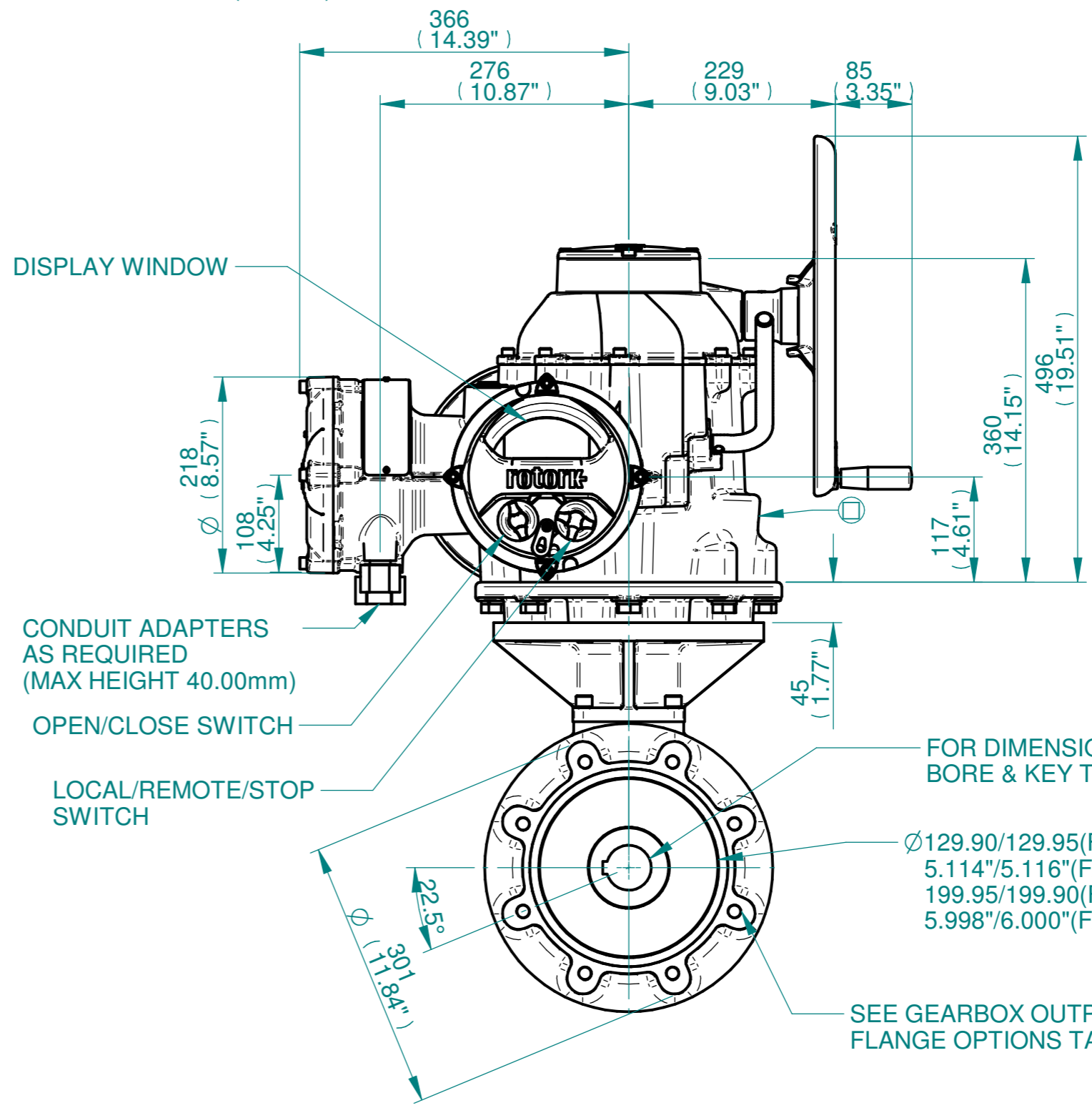
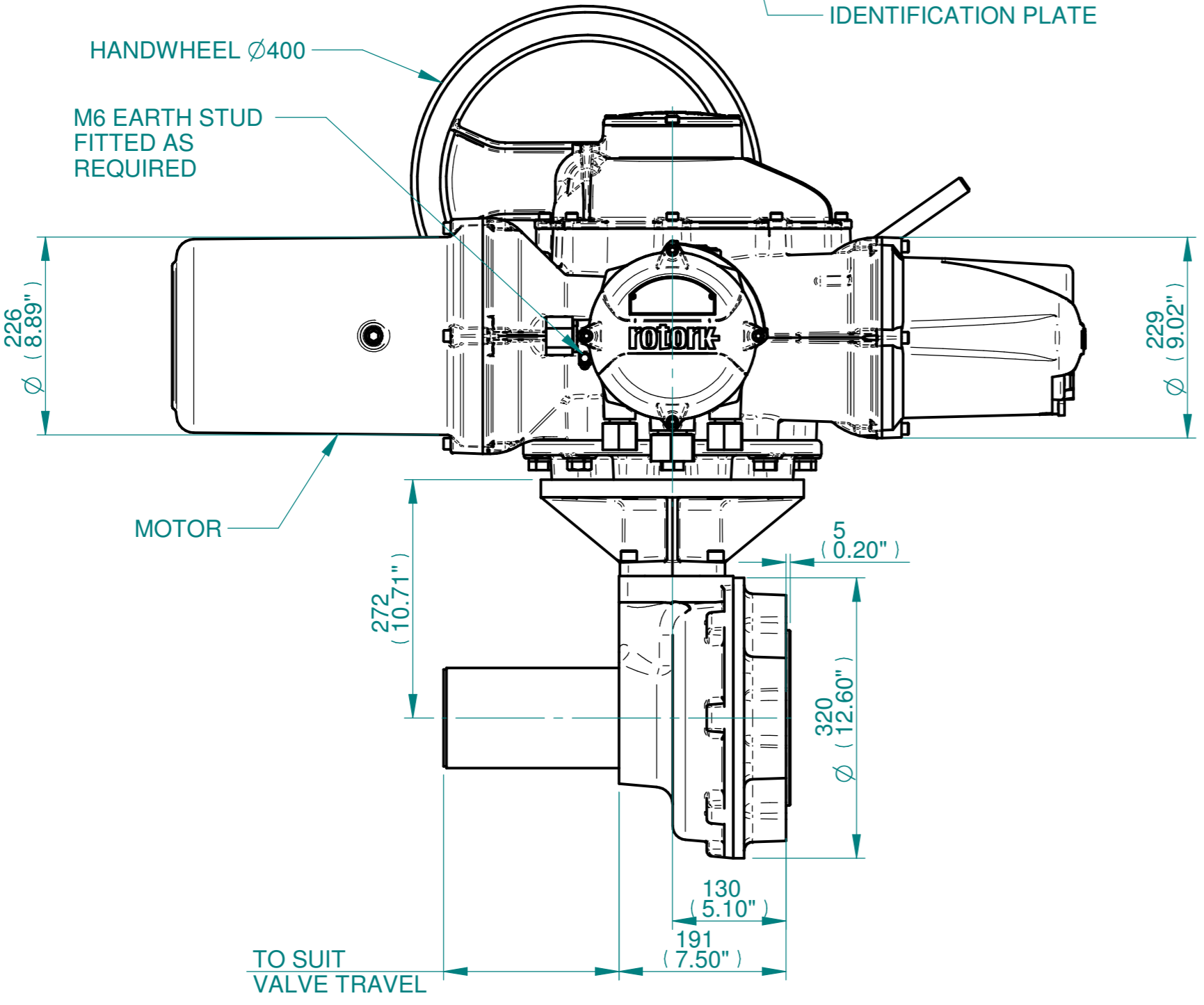
**NOTES:**  
 :DIMENSIONS WITH "\*" INDICATE COVER REMOVAL ALLOWANCE  
 :ELECTRONICS COVER OPTION "\*\*\*\*" WILL VARY DEPENDING ON CONFIGURATION  
 :NETT WEIGHT = F16:205kg/452lbs, F25:211kg/466lbs  
 : = OIL FILLER/DRAIN PLUG  
 :THE INTERFACE PROVIDED FOR MOUNTING THE ACTUATOR OR SECOND STAGE GEARBOX ONTO THE VALVE SHOULD CONFORM TO GOOD ENGINEERING PRACTICES, ENSURING ADEQUATELY TOLERANCED LIMITS FOR PARALLELISM, PERPENDICULARITY AND CONCENTRICITY.  
 :ROTORK CANNOT BE HELD LIABLE FOR DAMAGE TO OUR EQUIPMENT CAUSED BY EXCESSIVE LOADING FROM COVER TUBES. (SEE ALSO PUB000-124)

**CONDUIT ENTRIES**

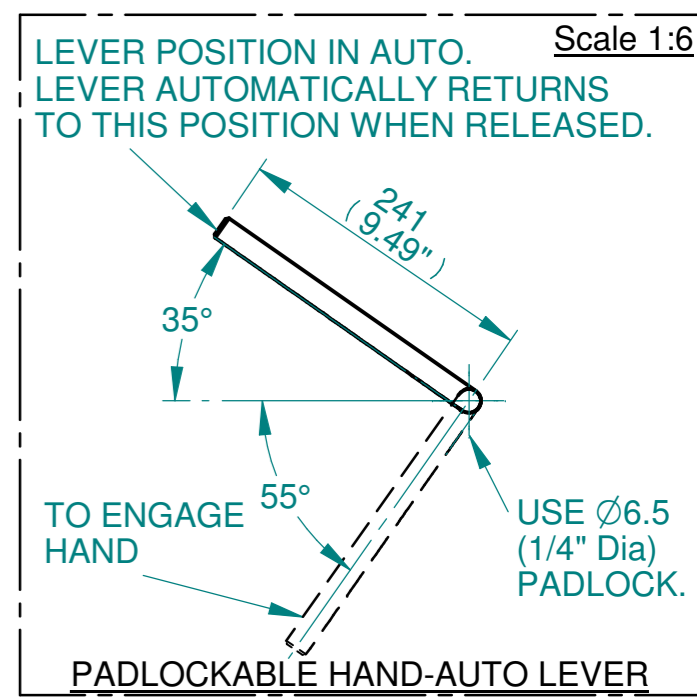


	Hole 1	Hole 2	Hole 3	Hole 4
Size	As Required	As Required	As Required	As Required
Plugged	As Required	As Required	As Required	As Required
Gland	As Required	As Required	As Required	As Required

BATTERY HOUSING  
 TERMINAL HOUSING  
 IDENTIFICATION PLATE  
 ELECTRONICS COVER (LONG) \*\*  
 ELECTRONICS COVER (SHORT) \*\*



DISPLAY WINDOW  
 CONDUIT ADAPTERS AS REQUIRED (MAX HEIGHT 40.00mm)  
 OPEN/CLOSE SWITCH  
 LOCAL/REMOTE/STOP SWITCH  
 FOR DIMENSIONS SEE MAXIMUM BORE & KEY TABLE  
 Ø129.90/129.95(F16)  
 5.114"/5.116"(FA16)  
 199.95/199.90(F25)  
 5.998"/6.000"(FA25)  
 SEE GEARBOX OUTPUT FLANGE OPTIONS TABLE



Rotork Controls Limited  
 Bath, BA1 3JQ, England.  
 Telephone 01225-733200

Actuator Size: IQ91, IB8, F16/F25/FA16/FA25		Gearbox output flange options								Maximum Bore & Key		
Title IQ91, SIDE HANDWHEEL, IB8, F16/F25/FA16/FA25, Ratios 3:1,4:1 &6:1 Installation Details Drawn TCE Checked NJC Date 19-AUG-14 Ref SALES Project Ref QUOTATION	Designation	F16	F25	-	-	FA16	FA25	-	-	Key form	Ø Bore	Key size
	No. Holes	4	8	-	-	4	8	-	-	Rectangle (BS4235)	68	20 X 12
	Hole size	M20	M16	-	-	3/4" UNC	5/8" UNC	-	-	Rectangle (ANSI B17.1)	2-5/8"	5/8 X 7/16"
	PCD	165	254	-	-	6.5"	10"	-	-	Square (ANSI B17.1)	2-1/2"	5/8"

Issue	Description
2	4 ENTRY CHANGE

Scale: 1:5 THIRD ANGLE PROJECTION

Drawing Number	Issue No	Sheet No
I15-91-SHWIB8STD	2	1 of 1

1 2 3 4 5 6 7 8 9 10 11 12