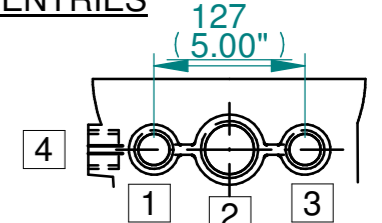


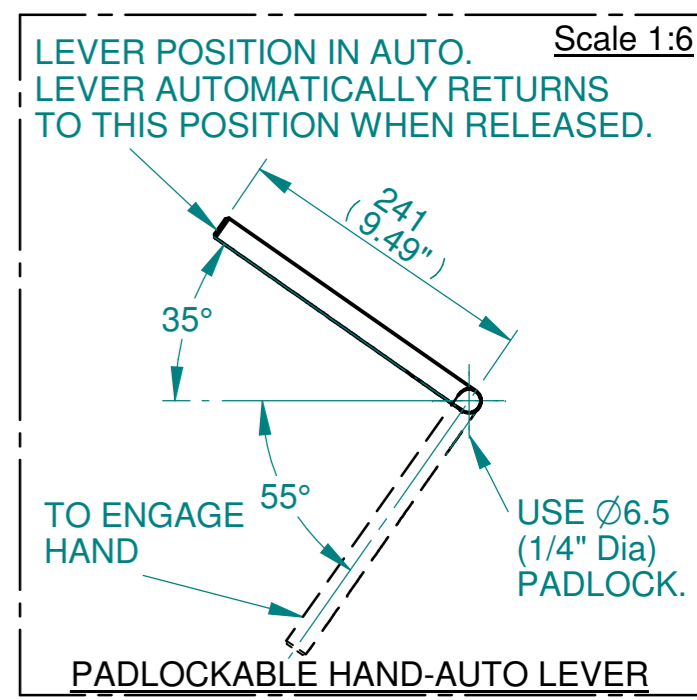
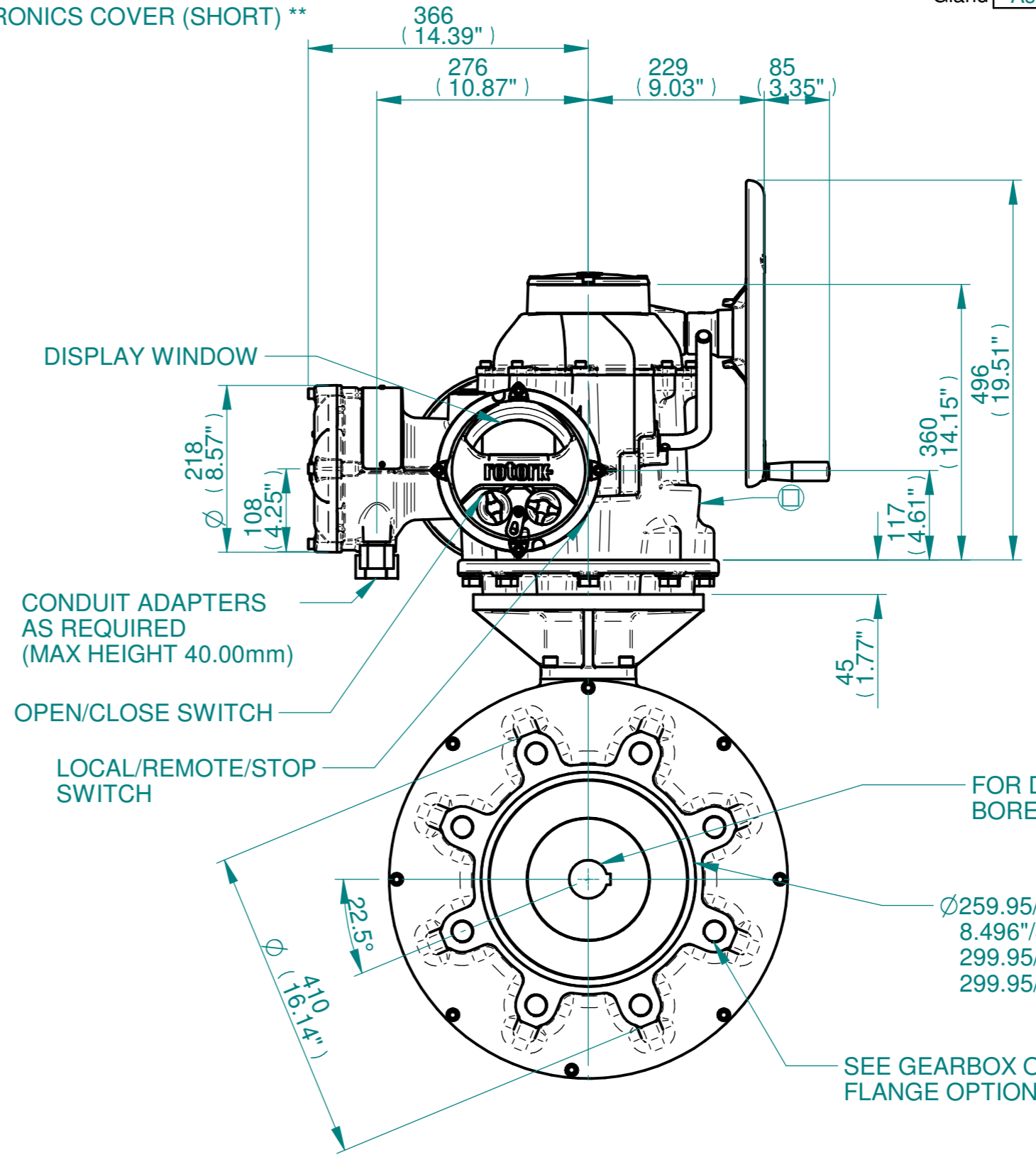
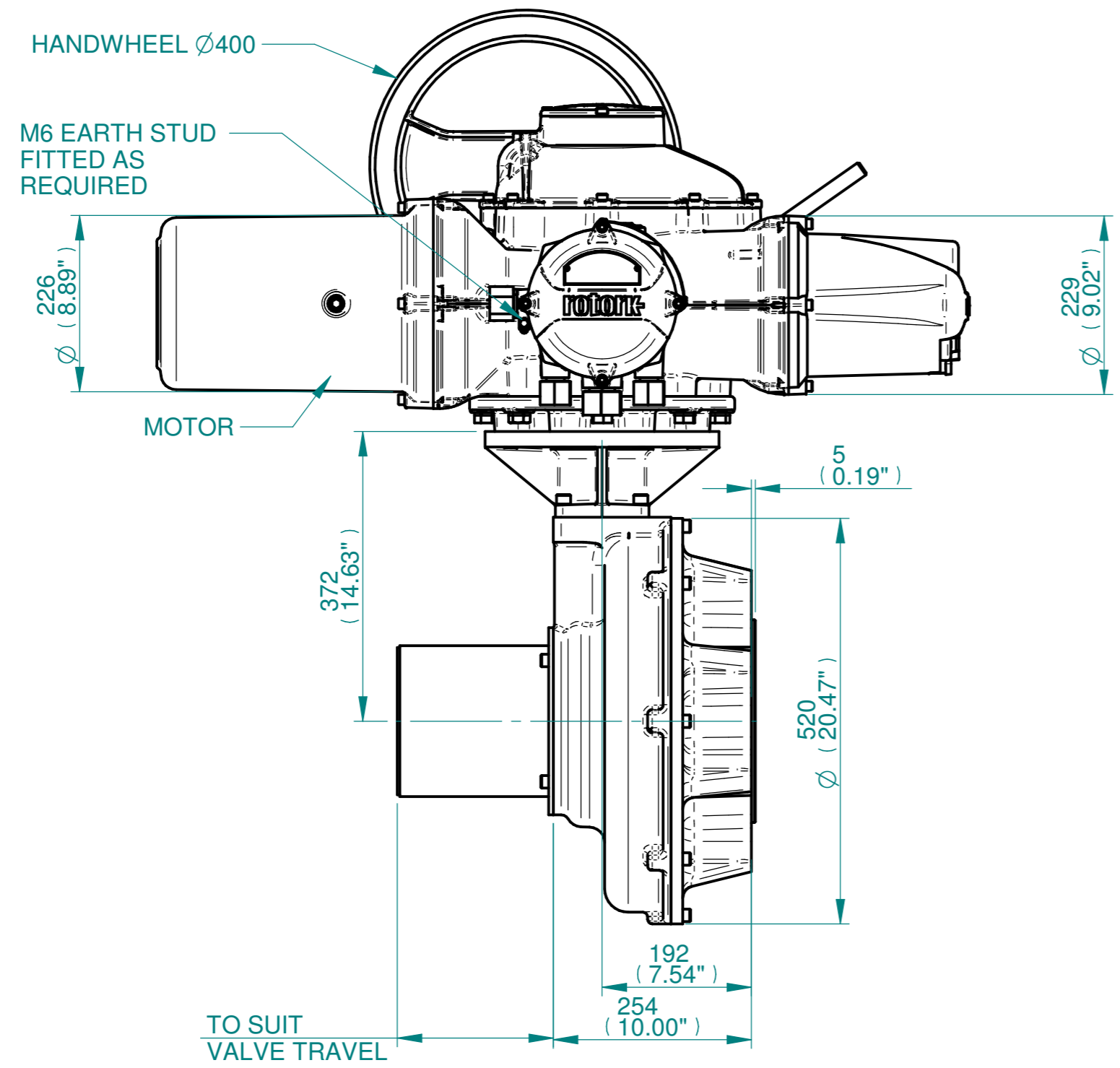
ISOMETRIC VIEW
(SCALE 1:12)

NOTES:
 :DIMENSIONS WITH "*" INDICATE COVER REMOVAL ALLOWANCE
 :ELECTRONICS COVER OPTION "****" WILL VARY DEPENDING ON CONFIGURATION
 :NETT WEIGHT = F35:350kg/772lbs, F40:365kg/705lbs
 : = OIL FILLER/DRAIN PLUG
 :THE INTERFACE PROVIDED FOR MOUNTING THE ACTUATOR OR SECOND STAGE GEARBOX ONTO THE VALVE SHOULD CONFORM TO GOOD ENGINEERING PRACTICES, ENSURING ADEQUATELY TOLERANCED LIMITS FOR PARALLELISM, PERPENDICULARITY AND CONCENTRICITY.
 :ROTORK CANNOT BE HELD LIABLE FOR DAMAGE TO OUR EQUIPMENT CAUSED BY EXCESSIVE LOADING FROM COVER TUBES. (SEE ALSO PUB000-124)

CONDUIT ENTRIES



	Hole 1	Hole 2	Hole 3	Hole 4
Size	As Required	As Required	As Required	As Required
Plugged	As Required	As Required	As Required	As Required
Gland	As Required	As Required	As Required	As Required



FOR DIMENSIONS SEE MAXIMUM BORE & KEY TABLE
 Ø259.95/259.90(F35)
 8.496"/8.488"(FA35)
 299.95/299.90(F40)
 299.95/299.90(FA40)

SEE GEARBOX OUTPUT FLANGE OPTIONS TABLE

Actuator Size: IQ91, IB13, F35/F40/FA35/FA40		Gearbox output flange options								Maximum Bore & Key		
Title IQ91, SIDE HANDWHEEL, IB13, F35/F40/FA35/FA40 Ratios 6:1 & 8:1 Installation Details	Designation	F35	F40	-	-	FA35	FA40	-	-	Key form	Ø Bore	Key size
	No. Holes	8	8	-	-	8	8	-	-	Rectangle (BS4235)	121	32 X 18
	Hole size	M30	M36	-	-	1" UNC	1-1/4" UNC	-	-	Rectangle (ANSI B17.1)	4-5/8"	1-1/4 X 7/8"
	PCD	356	406	-	-	14"	16"	-	-	Square (ANSI B17.1)	4-1/2"	1-1/4"
Drawn TCE	Checked NJC	Date 19-AUG-14										
Ref SALES	Project Ref QUOTATION											

Issue	Description
2	4 ENTRY CHANGE
Scale: 1:12	
THIRD ANGLE PROJECTION	
A2	Drawing Number Issue No Sheet No
I15-91-SHWIB13STD	2 1 of 1

rotork
www.rotork.com
Rotork Controls Limited
Bath, BA1 3JQ, England.
Telephone 01225-733200