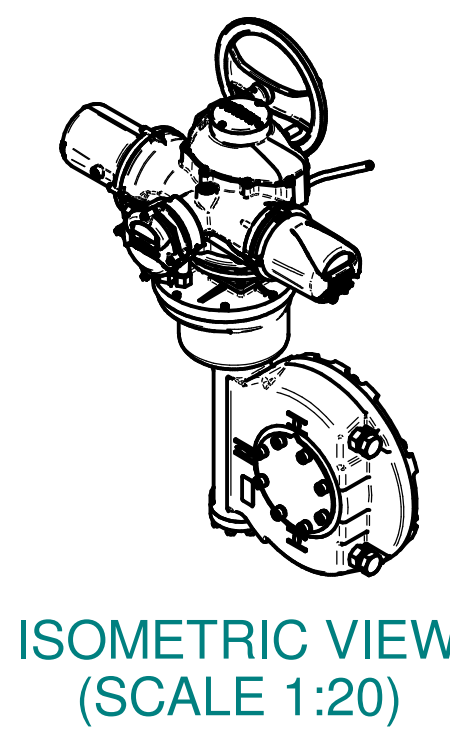
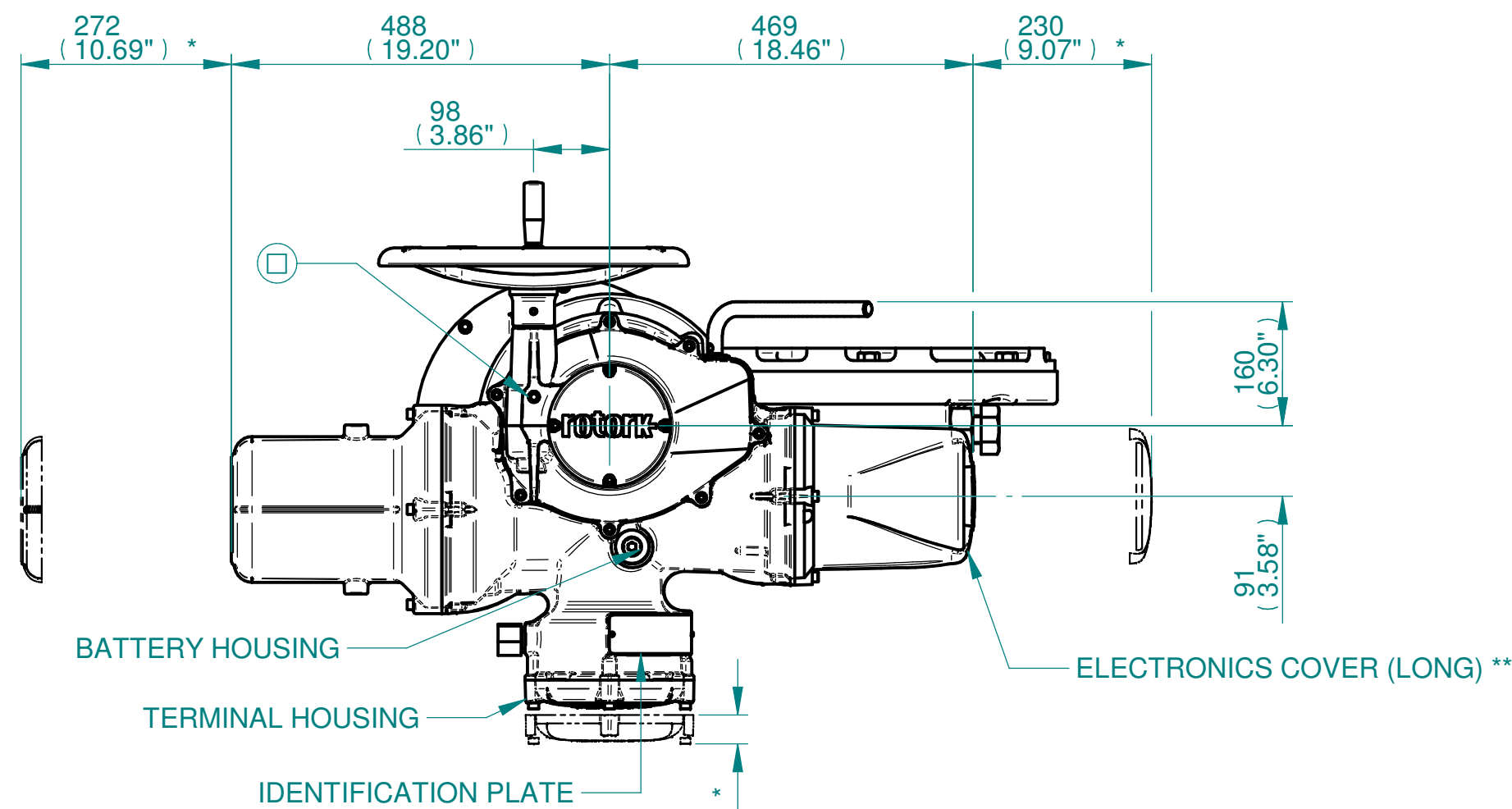
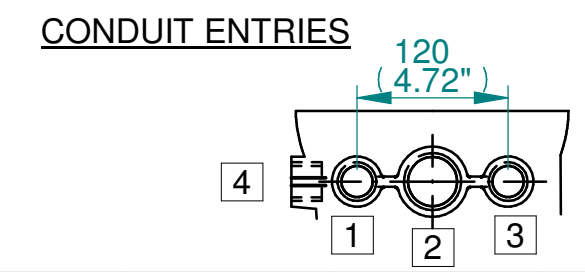


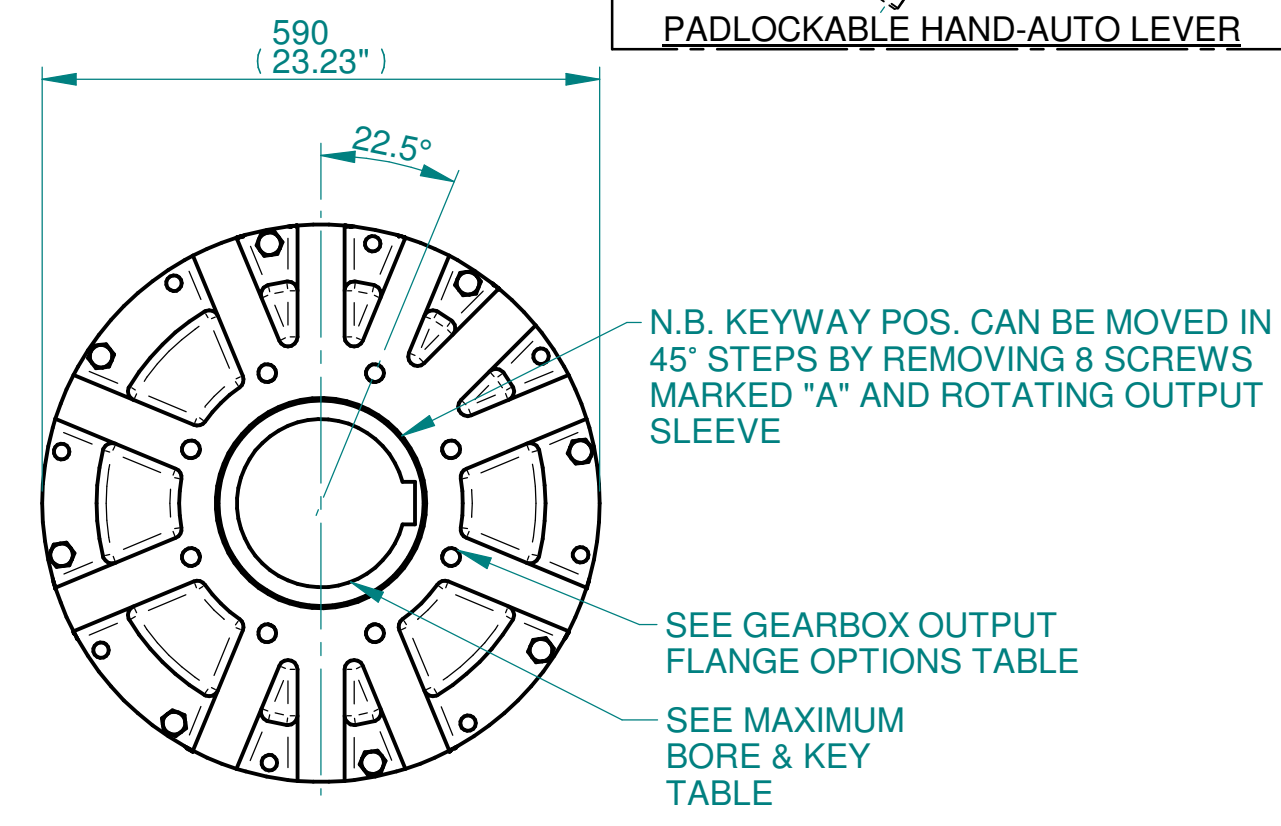
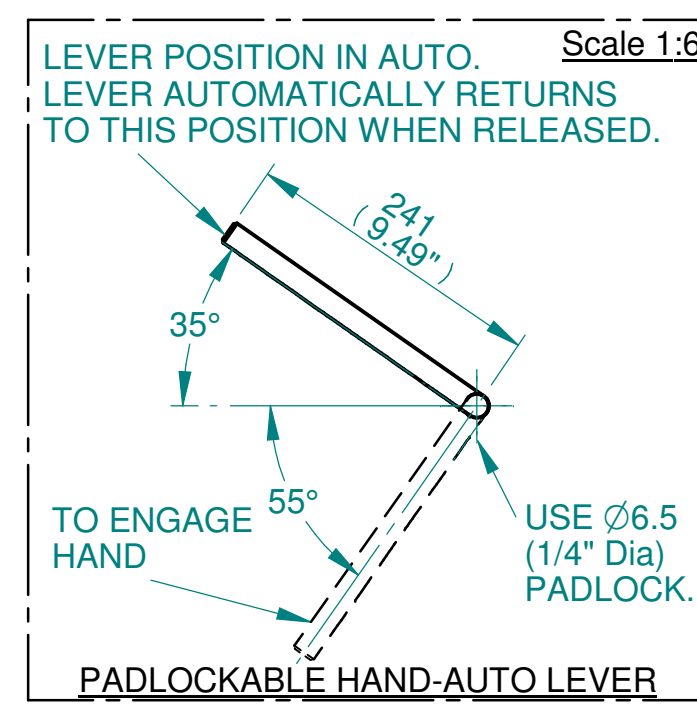
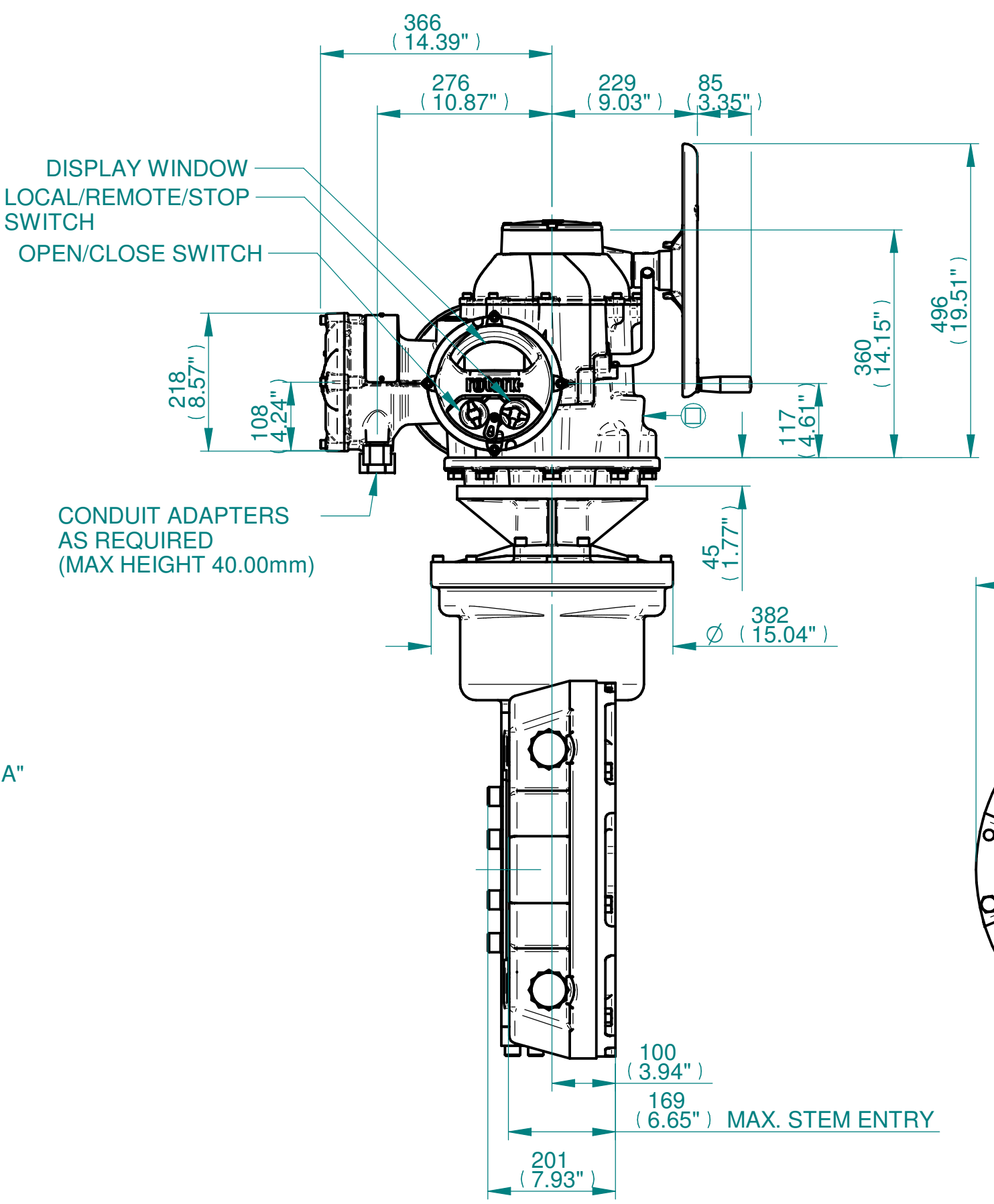
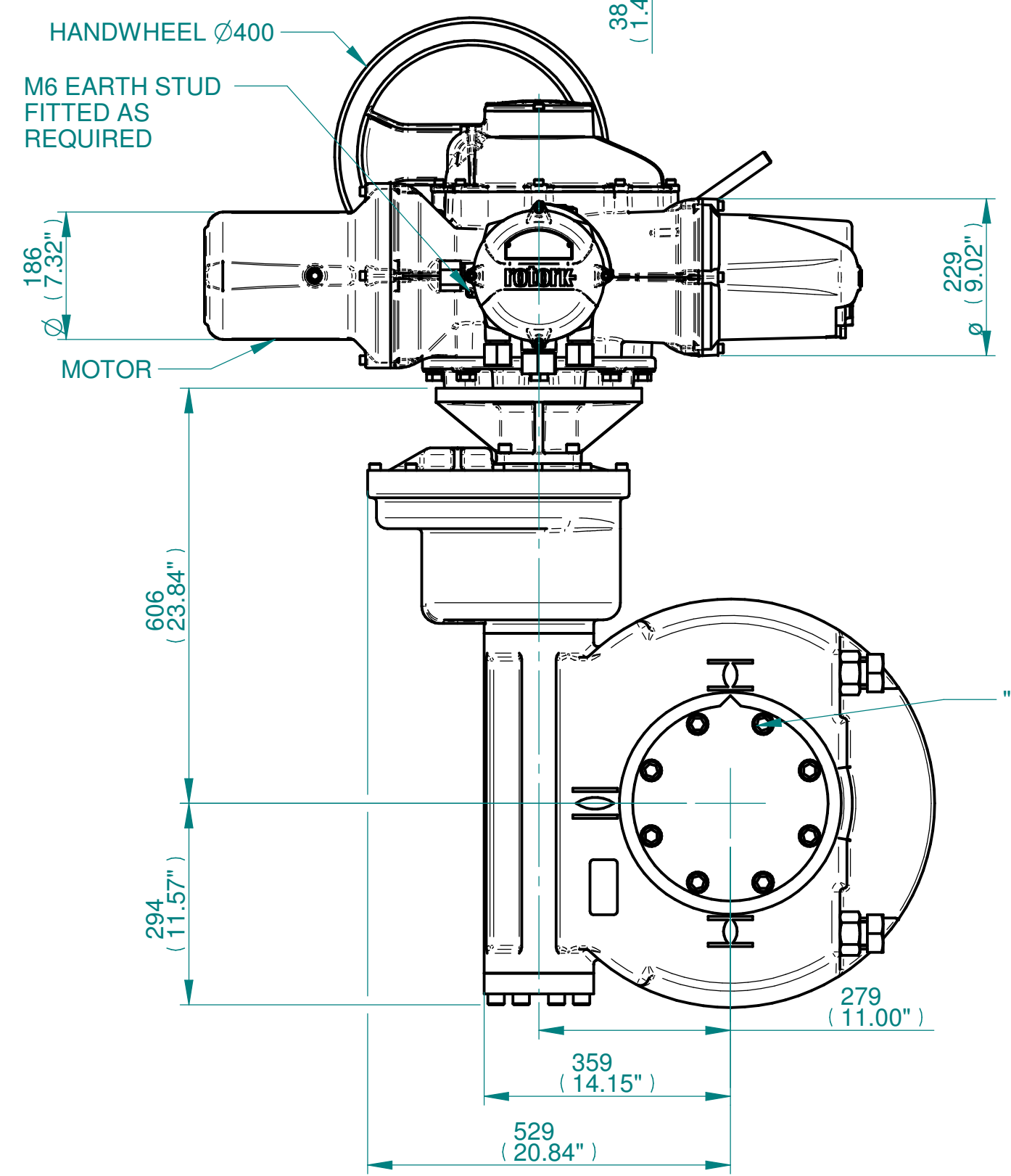
H  
G  
F  
E  
D  
C  
B  
A



**NOTES:**  
 :DIMENSIONS WITH "\*" INDICATE COVER REMOVAL ALLOWANCE  
 :NETT WEIGHT = 450kg/992lbs  
 : = OIL FILLER/DRAIN PLUG  
 :THE INTERFACE PROVIDED FOR MOUNTING THE ACTUATOR OR SECOND STAGE GEARBOX ONTO THE VALVE SHOULD CONFORM TO GOOD ENGINEERING PRACTICES, ENSURING ADEQUATELY TOLERANCED LIMITS FOR PARALLELISM, PERPENDICULARITY AND CONCENTRICITY.  
 :ROTORK CANNOT BE HELD LIABLE FOR DAMAGE TO OUR EQUIPMENT CAUSED BY EXCESSIVE LOADING FROM COVER TUBES. (SEE ALSO PUB000-124)



|         | Hole 1      | Hole 2      | Hole 3      | Hole 4      |
|---------|-------------|-------------|-------------|-------------|
| Size    | As Required | As Required | As Required | As Required |
| Plugged | As Required | As Required | As Required | As Required |
| Gland   | As Required | As Required | As Required | As Required |



3D Models are available in various formats under the same drawing number

| Actuator Size: IQ40 IW9RH/MOW9RH |  | Gearbox output flange options |     |      |           |           |            |      |                        | Maximum Bore & Key |                    |        |          |
|----------------------------------|--|-------------------------------|-----|------|-----------|-----------|------------|------|------------------------|--------------------|--------------------|--------|----------|
| Title                            | IQ40, SIDE HANDWHEEL, IW9RH/MOW9RH, F30/F35/F40/FA30/FA35/FA40, Ratios 960:1 - 3000:1 Installation Details | Designation                   | F30 | F35  | F40       | -         | FA30       | FA35 | FA40                   | -                  | Key form           | Ø Bore | Key size |
| Drawn                            | TED  | Checked                       | NJC | Date | 18-AUG-14 | No. Holes | 8          | 8    | 8                      | -                  | Rectangle (BS4235) | 178    | 45 X 25  |
| Hole size                        | M20  | M30                           | M36 | -    | 3/4" UNC  | 1" UNC    | 1-1/4" UNC | -    | Rectangle (ANSI B17.1) | 6-1/2"             | 1-1/2 X 1"         |        |          |
| PCD                              | 298  | 356                           | 406 | -    | 11.75"    | 14"       | 16"        | -    | Square (ANSI B17.1)    | 6-1/2"             | 1-1/2" SQ          |        |          |

| Issue | Description    |
|-------|----------------|
| 2     | 4 ENTRY CHANGE |

Scale: 1:8 THIRD ANGLE PROJECTION

| Drawing Number | Issue No | Sheet No |
|----------------|----------|----------|
| I4SHWIW9RHSTD  | 2        | 1 of 1   |

**rotork**  
 www.rotork.com  
 Rotork Controls Limited  
 Bath, BA1 3JQ, England.  
 Telephone 01225-733200

1 2 3 4 5 6 7 8 9 10 11 12