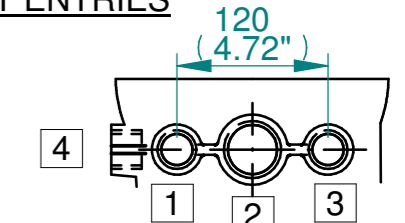


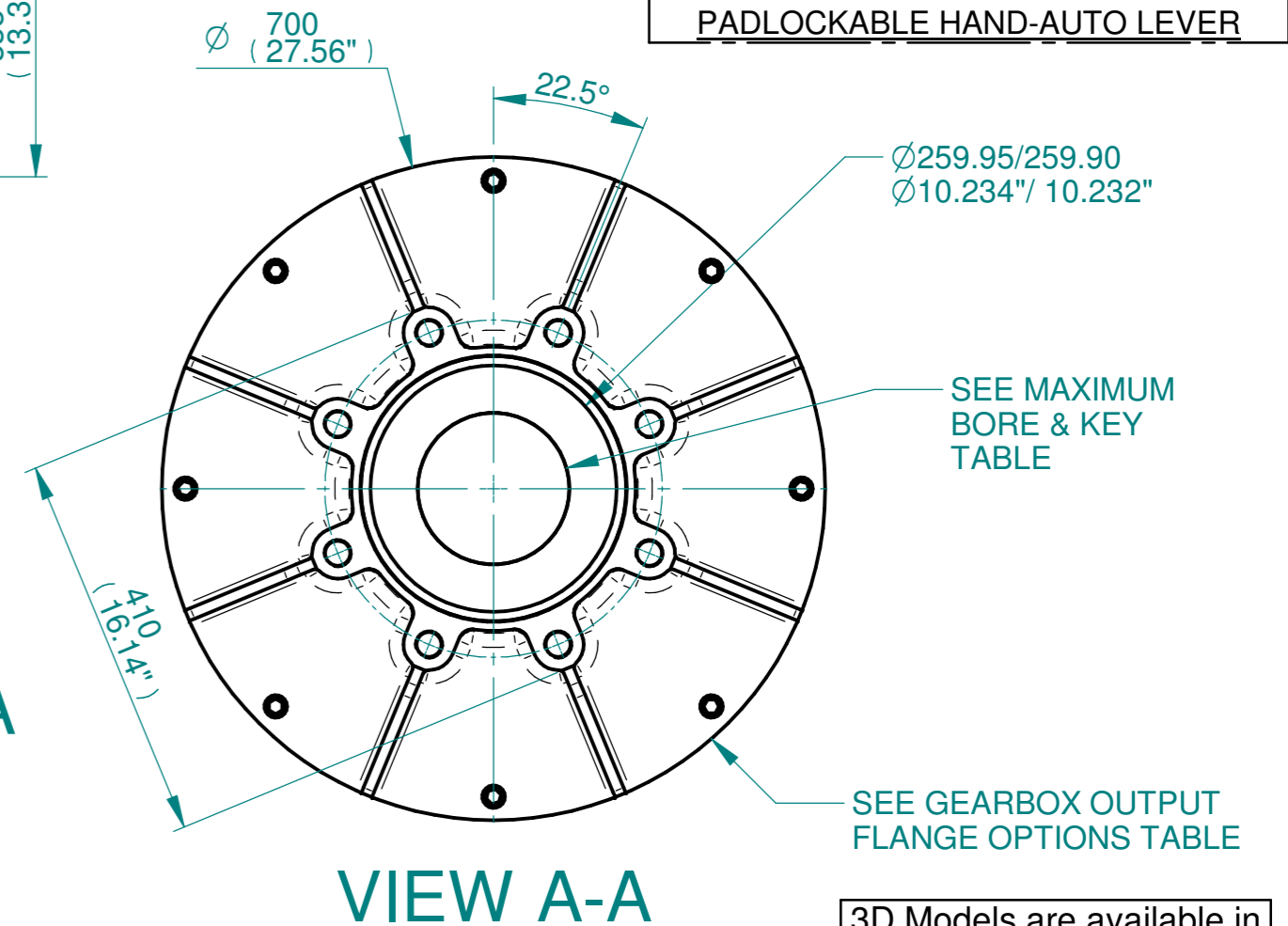
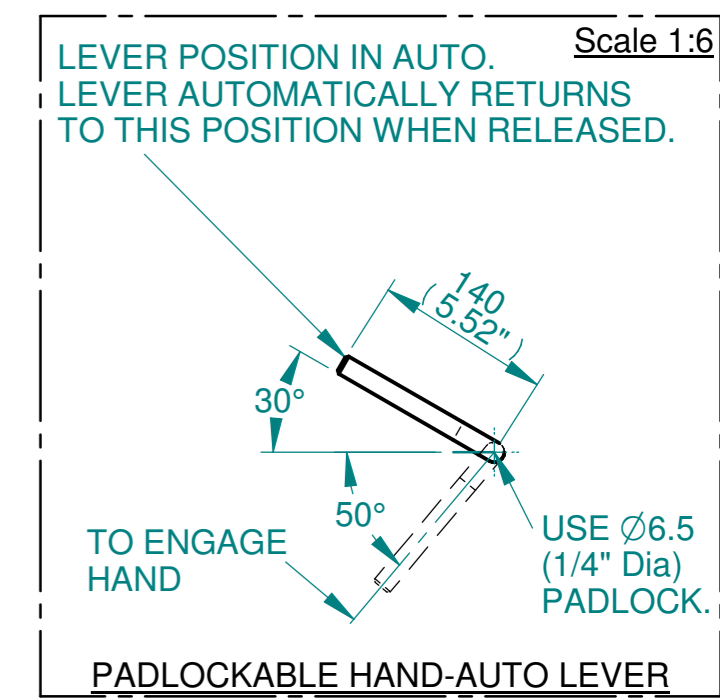
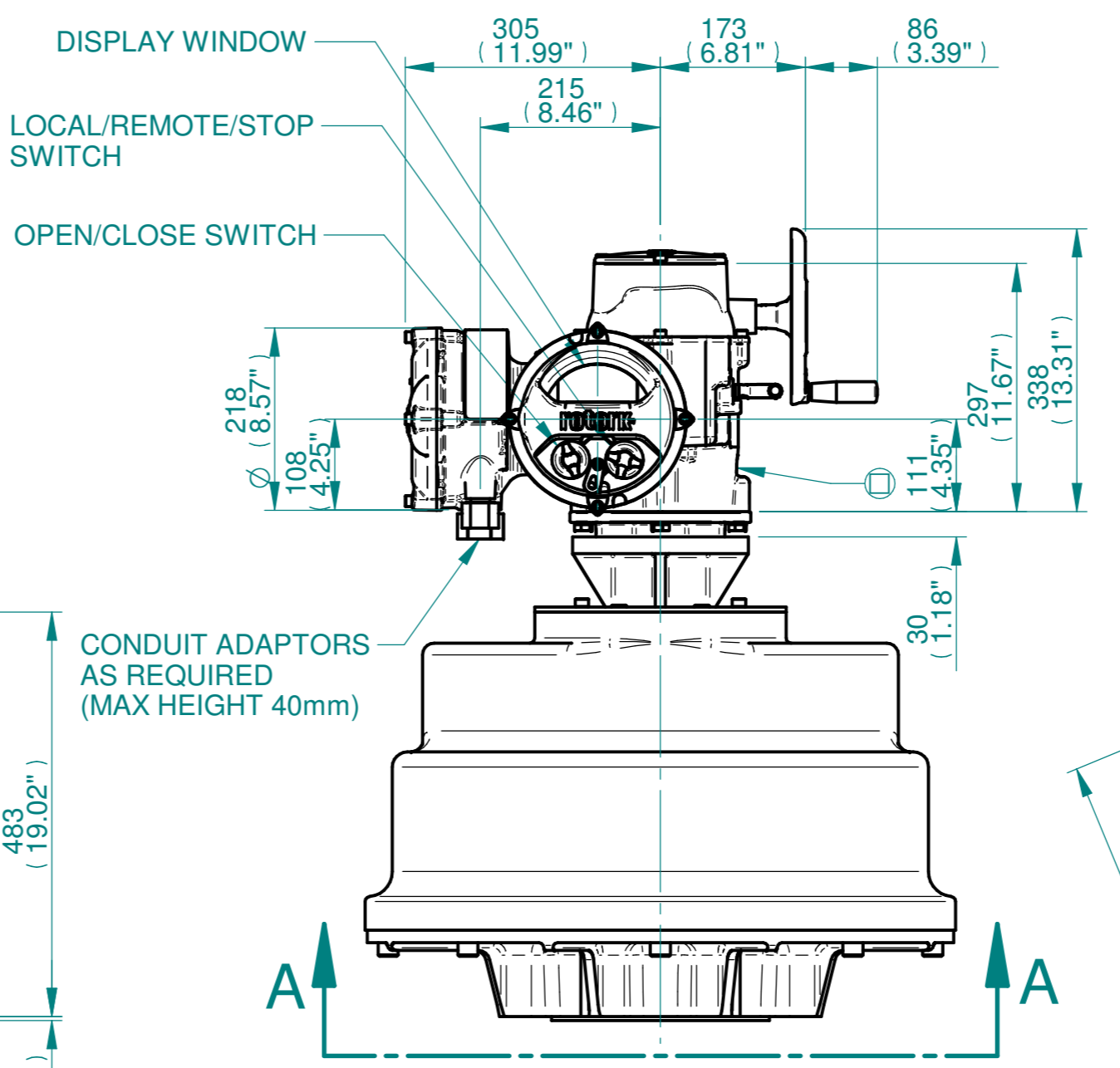
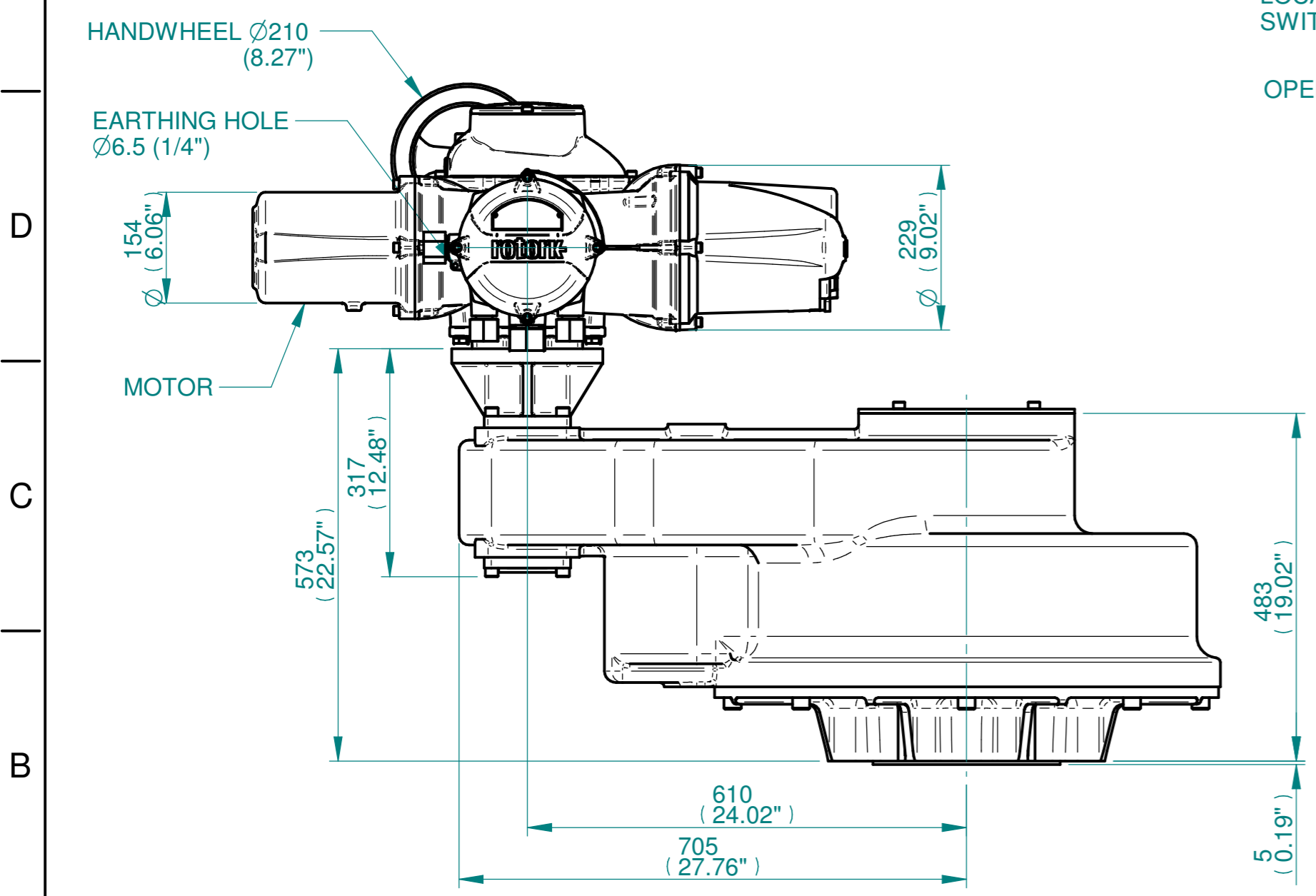
ISOMETRIC VIEW
1:10

NOTES:
 : DIMENSIONS WITH "*" INDICATE COVER REMOVAL ALLOWANCE
 : ELECTRONICS COVER OPTION "*" WILL VARY DEPENDING ON CONFIGURATION
 : NETT WEIGHT = 650kg/1433lbs
 : = OIL FILLER/DRAIN PLUG
 : THE INTERFACE PROVIDED FOR MOUNTING THE ACTUATOR OR SECOND STAGE GEARBOX ONTO THE VALVE SHOULD CONFORM TO GOOD ENGINEERING PRACTICES, ENSURING ADEQUATELY TOLERANCED LIMITS FOR PARALLELISM, PERPENDICULARITY AND CONCENTRICITY.
 : ROTORK CANNOT BE HELD LIABLE FOR DAMAGE TO OUR EQUIPMENT CAUSED BY EXCESSIVE LOADING FROM COVER TUBES. (SEE ALSO PUB000-124)

CONDUIT ENTRIES



	Hole 1	Hole 2	Hole 3	Hole 4
Size	As Required	As Required	As Required	As Required
Plugged	As Required	As Required	As Required	As Required
Gland	As Required	As Required	As Required	As Required



VIEW A-A

3D Models are available in various formats under the same drawing number

Actuator Size: IQ35, IS17	Gearbox output flange options								Maximum Bore & Key		
	Title	Designation	No. Holes	Hole size	PCD	Key form	Ø Bore	Key size			
www.rotork.com	IQ35, SIDE HANDWHEEL, IS17, F35, FA35, Ratios 6:1,8:1,10:1,12:1,15:1,24:1 Installation Details	F35	8	M30	356	FA35	121	32 x 18			
Drawn DH	Checked JBA	Date MARCH 19									
Ref SALES	Project Ref QUOTATION										

Issue	Description
1	FIRST ISSUE

Scale: 1:7.5

Drawing Number	Issue No	Sheet No
I13SHWIS17STD	1	1 of 1