
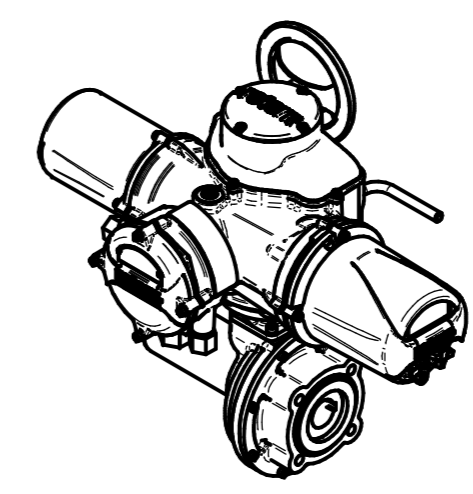
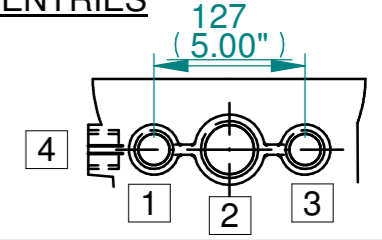


**NOTES:**  
 :DIMENSIONS WITH "\*" INDICATE COVER REMOVAL ALLOWANCE  
 :ELECTRONICS COVER OPTION "\*" WILL VARY DEPENDING ON CONFIGURATION  
 :NETT WEIGHT = F16:130kg/286lbs, F25:136kg/300lbs  
 :  = OIL FILLER/DRAIN PLUG  
 :THE INTERFACE PROVIDED FOR MOUNTING THE ACTUATOR OR SECOND STAGE GEARBOX ONTO THE VALVE SHOULD CONFORM TO GOOD ENGINEERING PRACTICES, ENSURING ADEQUATELY TOLERANCED LIMITS FOR PARALLELISM, PERPENDICULARITY AND CONCENTRICITY.  
 :ROTORK CANNOT BE HELD LIABLE FOR DAMAGE TO OUR EQUIPMENT CAUSED BY EXCESSIVE LOADING FROM COVER TUBES. (SEE ALSO PUB000-124)

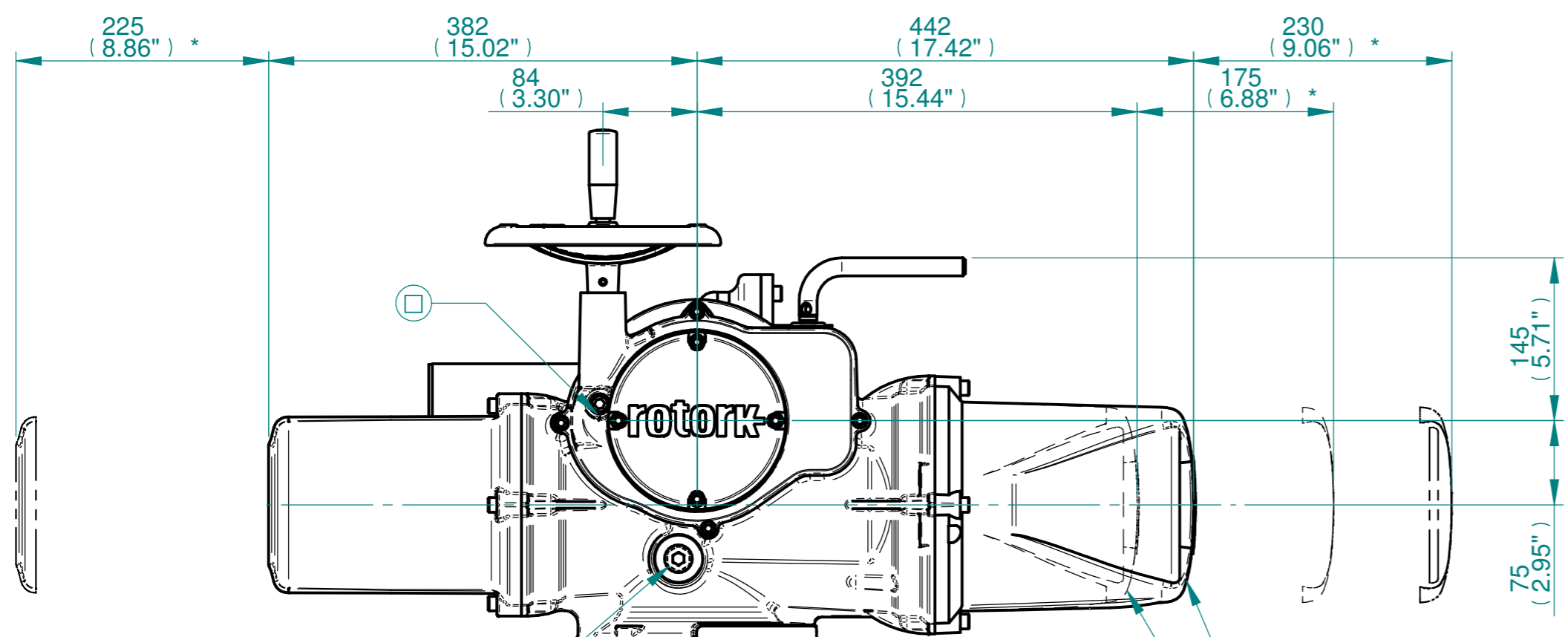


ISOMETRIC VIEW (SCALE 1:12)

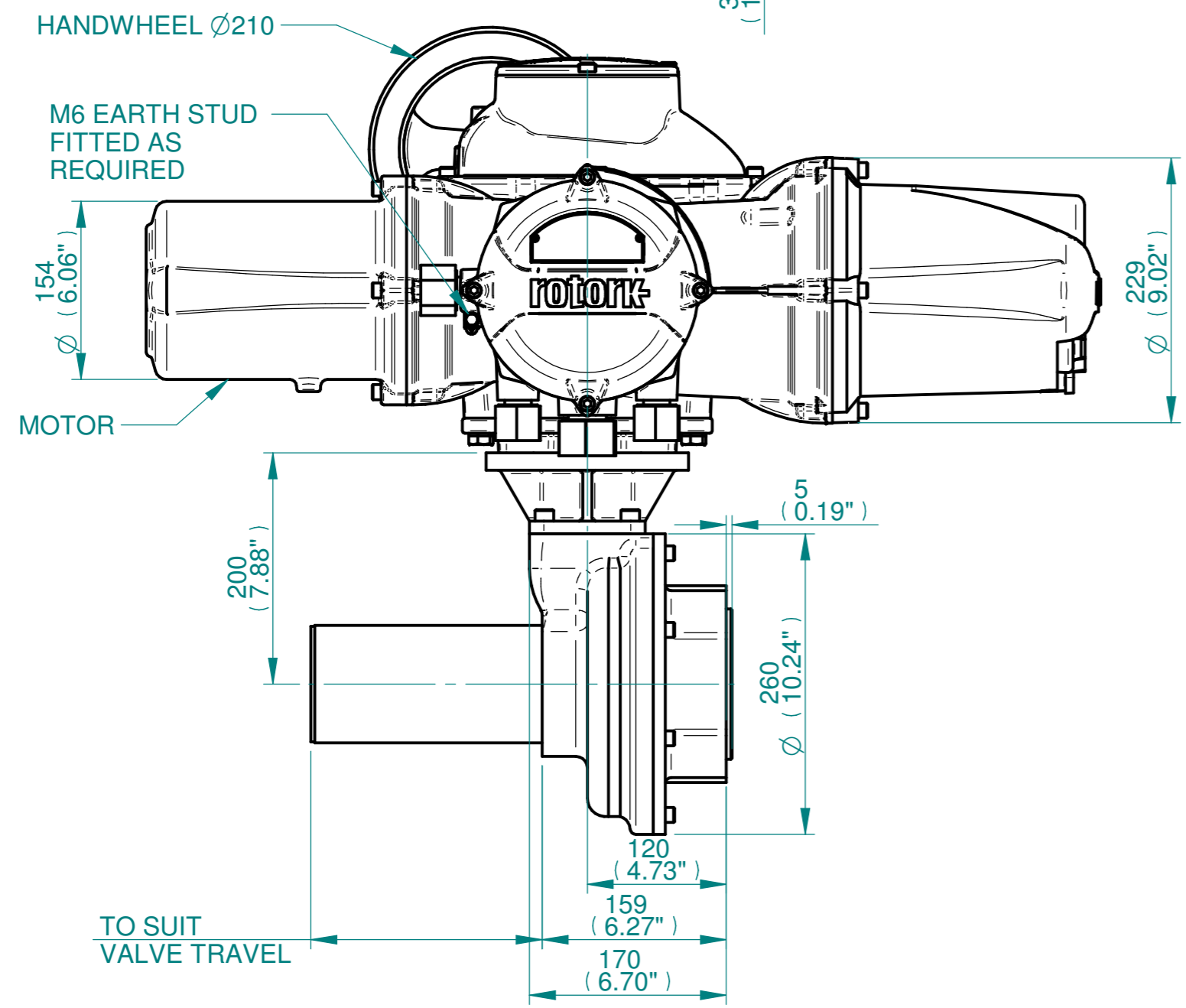
**CONDUIT ENTRIES**



	Hole 1	Hole 2	Hole 3	Hole 4
Size	As Required	As Required	As Required	As Required
Plugged	As Required	As Required	As Required	As Required
Gland	As Required	As Required	As Required	As Required

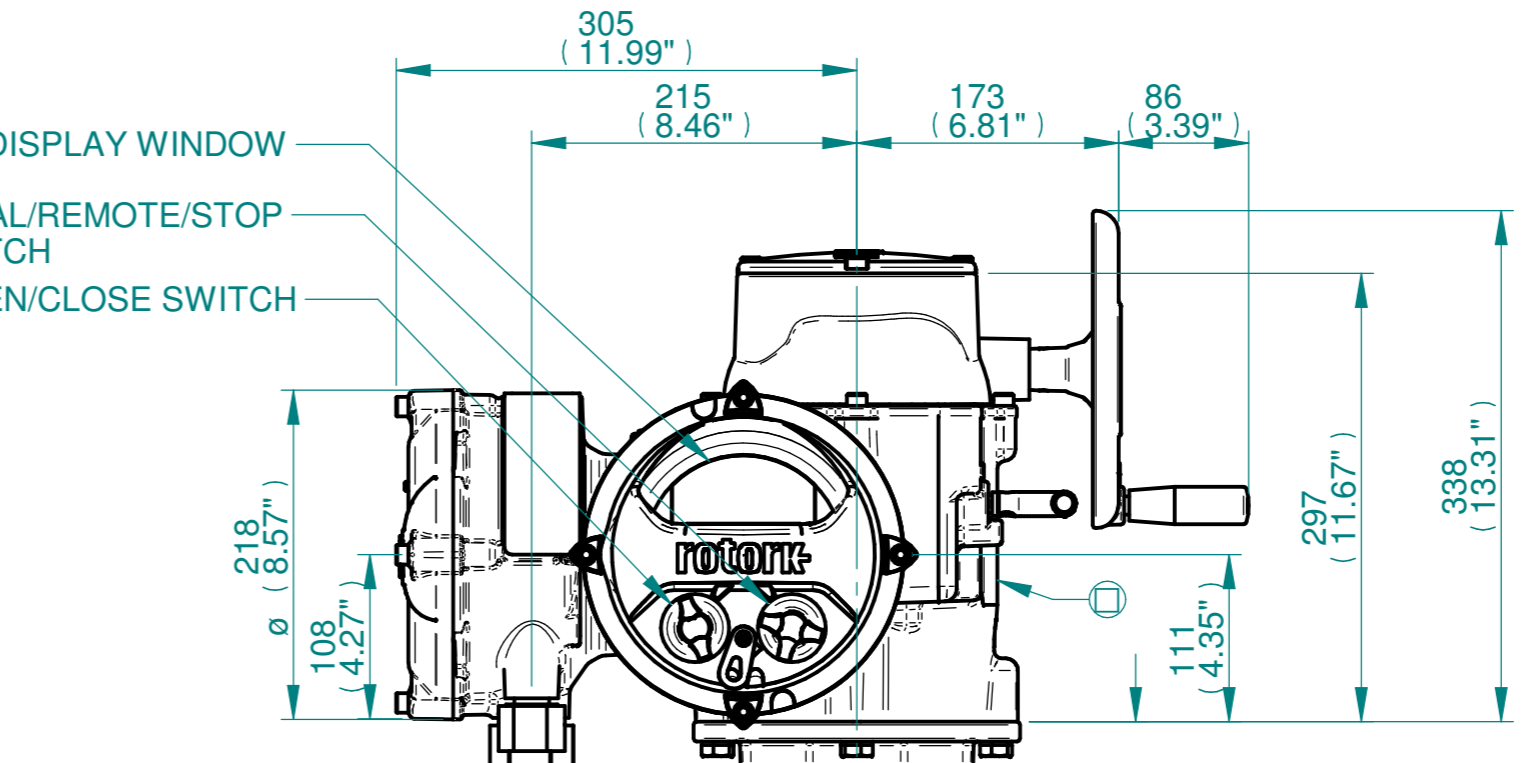


BATTERY HOUSING  
 TERMINAL HOUSING  
 IDENTIFICATION PLATE  
 ELECTRONICS COVER (LONG) \*\*  
 ELECTRONICS COVER (SHORT) \*\*

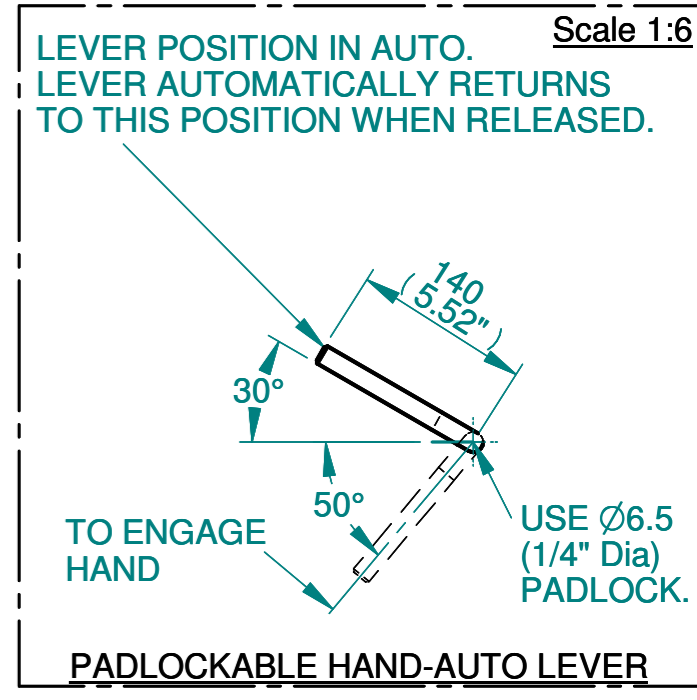


HANDWHEEL Ø210  
 M6 EARTH STUD FITTED AS REQUIRED  
 MOTOR

DISPLAY WINDOW  
 LOCAL/REMOTE/STOP SWITCH  
 OPEN/CLOSE SWITCH



CONDUIT ADAPTERS AS REQUIRED (MAX HEIGHT 40.00mm)  
 SEE MAXIMUM BORE & KEY TABLE  
 Ø129.90/129.95 (F16)  
 4.995"/4.985" (FA16)  
 199.95/199.90 (F25)  
 5.998"/6.000" (FA25)  
 SEE GEARBOX OUTPUT FLANGE OPTIONS TABLE




LEVER POSITION IN AUTO. LEVER AUTOMATICALLY RETURNS TO THIS POSITION WHEN RELEASED. Scale 1:6



Rotork Controls Limited  
 Bath, BA1 3JQ, England.  
 Telephone 01225-733200

Actuator Size: IQ35, IB8, F16/F25/FA16/FA25		Gearbox output flange options								Maximum Bore & Key		
Title IQ35, SIDE HANDWHEEL, IB8, F16/F25/FA16/FA25, Ratios 3:1,4:1 & 6:1 Installation Details Drawn JLF Checked NJC Date 13-MAR-15 Ref SALES Project Ref QUOTATION	Designation	F16	F25	-	-	FA16	FA25	-	-	Key form	Ø Bore	Key size
	No. Holes	4	8	-	-	4	8	-	-	Rectangle (BS4235)	68	20 X 12
	Hole size	M20	M16	-	-	3/4" UNC	5/8" UNC	-	-	Rectangle (ANSI B17.1)	2-5/8"	5/8 X 7/16"
	PCD	165	254	-	-	6.5"	10"	-	-	Square (ANSI B17.1)	2-1/2"	5/8"

Issue	Description
2	4 ENTRY CHANGE

Scale: 1:5  THIRD ANGLE PROJECTION

Drawing Number	Issue No	Sheet No
I13SHWIB8STD	2	1 of 1