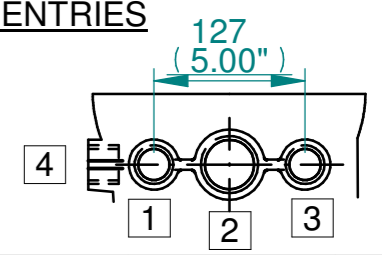


ISOMETRIC VIEW
(SCALE 1:12)

NOTES:
 :DIMENSIONS WITH "*" INDICATE COVER REMOVAL ALLOWANCE
 :ELECTRONICS COVER OPTION "****" WILL VARY DEPENDING ON CONFIGURATION
 :NETT WEIGHT = 418kg/921lbs
 : = OIL FILLER/DRAIN PLUG
 :THE INTERFACE PROVIDED FOR MOUNTING THE ACTUATOR OR SECOND STAGE GEARBOX ONTO THE VALVE SHOULD CONFORM TO GOOD ENGINEERING PRACTICES, ENSURING ADEQUATELY TOLERANCED LIMITS FOR PARALLELISM, PERPENDICULARITY AND CONCENTRICITY.
 :ROTORK CANNOT BE HELD LIABLE FOR DAMAGE TO OUR EQUIPMENT CAUSED BY EXCESSIVE LOADING FROM COVER TUBES. (SEE ALSO PUB000-124)

CONDUIT ENTRIES



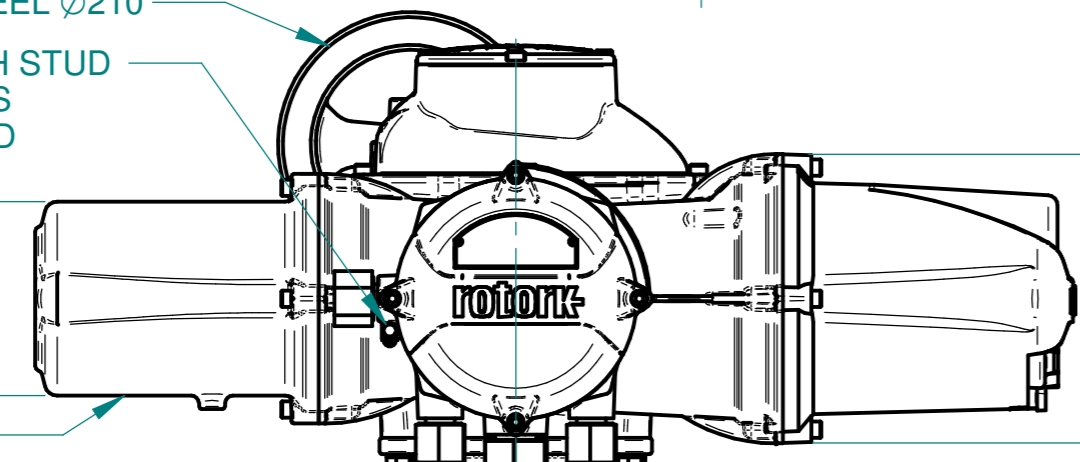
	Hole 1	Hole 2	Hole 3	Hole 4
Size	As Required	As Required	As Required	As Required
Plugged	As Required	As Required	As Required	As Required
Gland	As Required	As Required	As Required	As Required

BATTERY HOUSING
 TERMINAL HOUSING

ELECTRONICS COVER (LONG) **
 ELECTRONICS COVER (SHORT) **

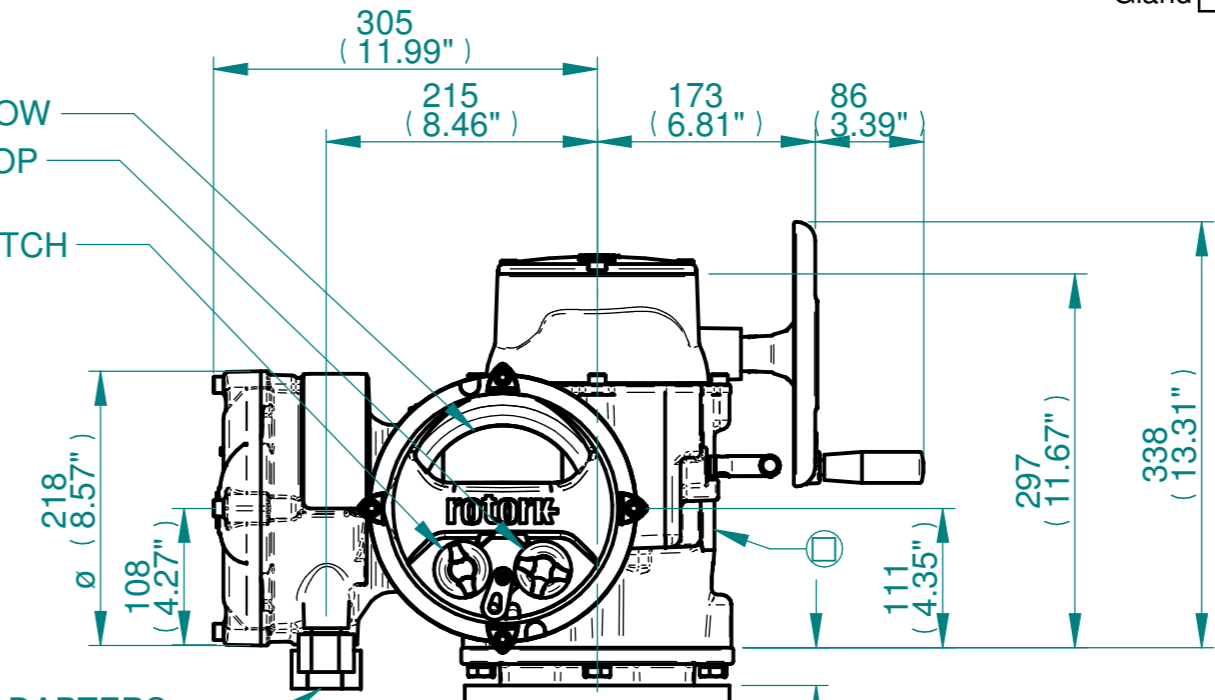
HANDWHEEL Ø210
 M6 EARTH STUD
 FITTED AS
 REQUIRED

154 (6.06) Ø
 MOTOR



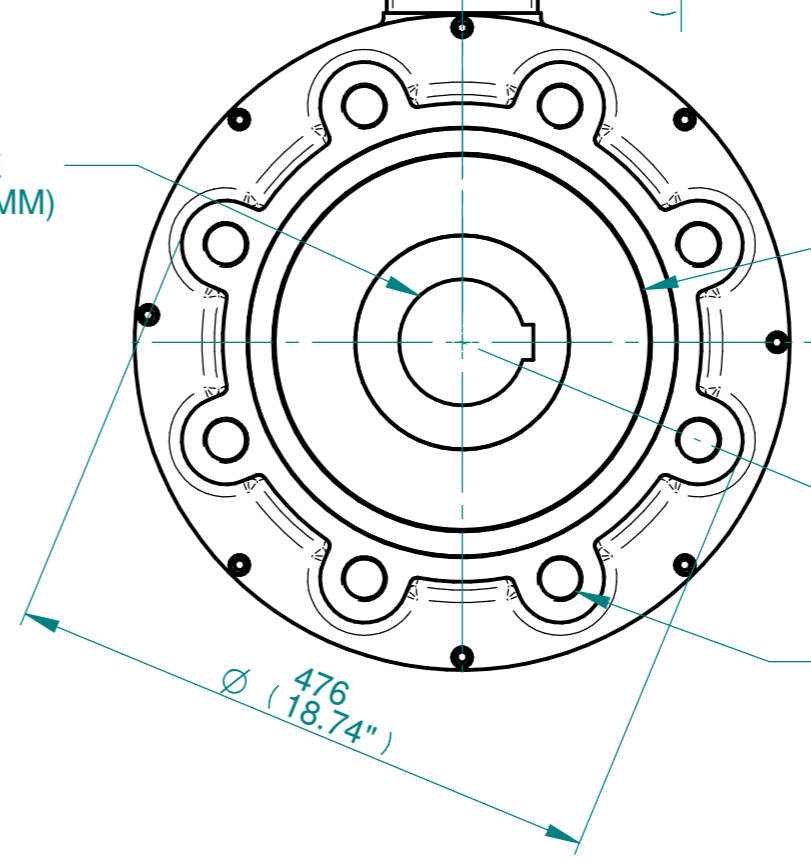
DISPLAY WINDOW
 LOCAL/REMOTE/STOP
 SWITCH
 OPEN/CLOSE SWITCH

CONDUIT ADAPTERS
 AS REQUIRED
 (MAX HEIGHT 40.00mm)

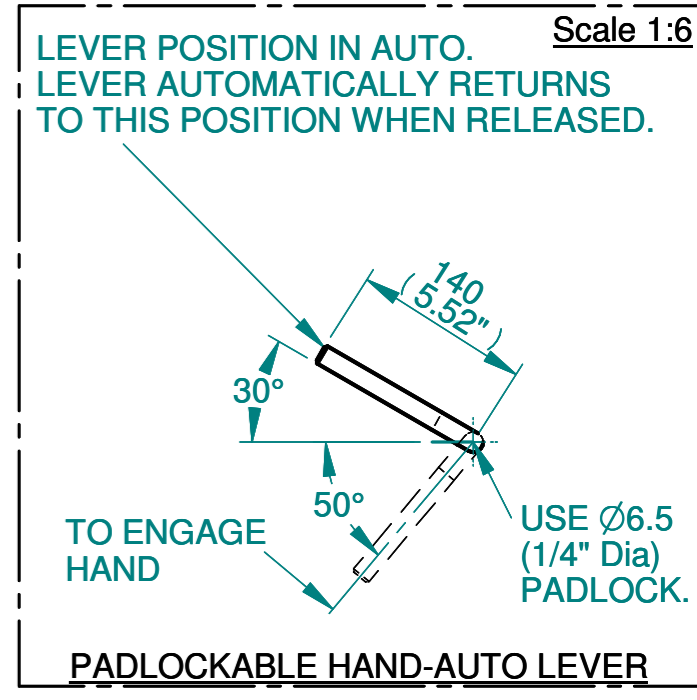


SEE MAXIMUM BORE & KEY TABLE
 (CAST BORE 60 MM, OPTIONAL 40MM)

Ø299.95/299.90 (F40)
 9.000"/8.994" (FA40)



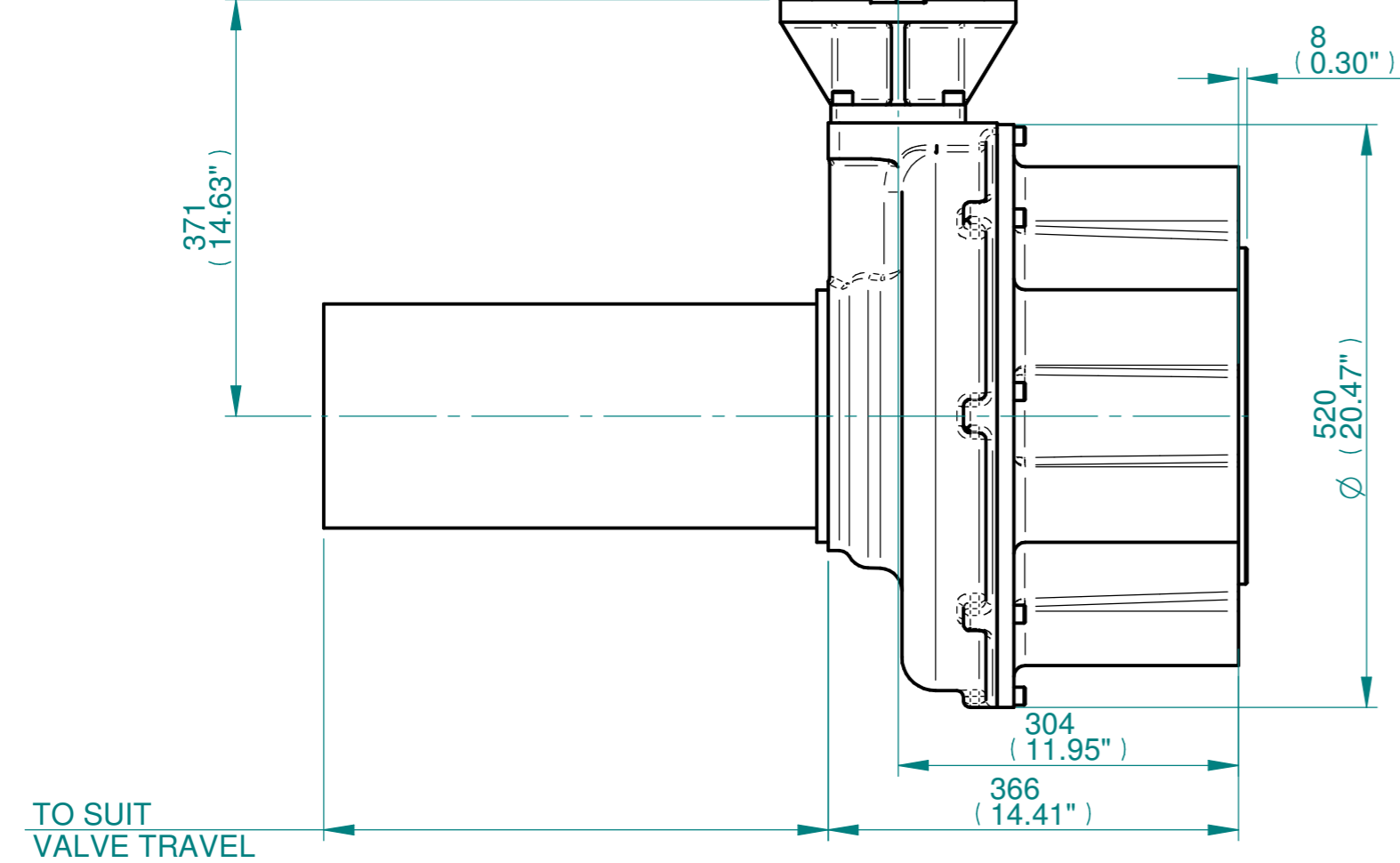
SEE GEARBOX OUTPUT
 FLANGE OPTIONS TABLE



Scale 1:6

LEVER POSITION IN AUTO.
 LEVER AUTOMATICALLY RETURNS
 TO THIS POSITION WHEN RELEASED.

PADLOCKABLE HAND-AUTO LEVER



Actuator Size: IQ35, IB14, F40/FA40		Gearbox output flange options								Maximum Bore & Key				
rotork www.rotork.com Rotork Controls Limited Bath, BA1 3JQ, England. Telephone 01225-733200	Title IQ35, SIDE HANDWHEEL, IB14, F40/FA40, Ratios 6:1 & 8:1, Installation Details Drawn JLF Checked NJC Date 13-MAR-15 Ref SALES Project Ref QUOTATION	Designation	F40	-	-	-	-	FA40	-	-	-	Key form	Ø Bore	Key size
		No. Holes	8	-	-	-	-	8	-	-	-	Rectangle (BS4235)	130	32 X 18
		Hole size	M36	-	-	-	-	1-1/4" UNC	-	-	-	Rectangle (ANSI B17.1)	5"	1-1/4 X 7/8"
		PCD	406	-	-	-	-	16"	-	-	-	Square (ANSI B17.1)	4-5/8"	1-1/4"

Issue	Description
2	4 ENTRY CHANGE

Scale: 1:5 THIRD ANGLE PROJECTION

Drawing Number	Issue No	Sheet No
I13SHWIB14STD	2	1 of 1