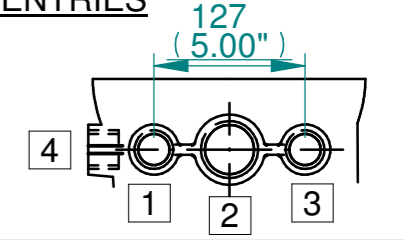


ISOMETRIC VIEW  
(SCALE 1:12)

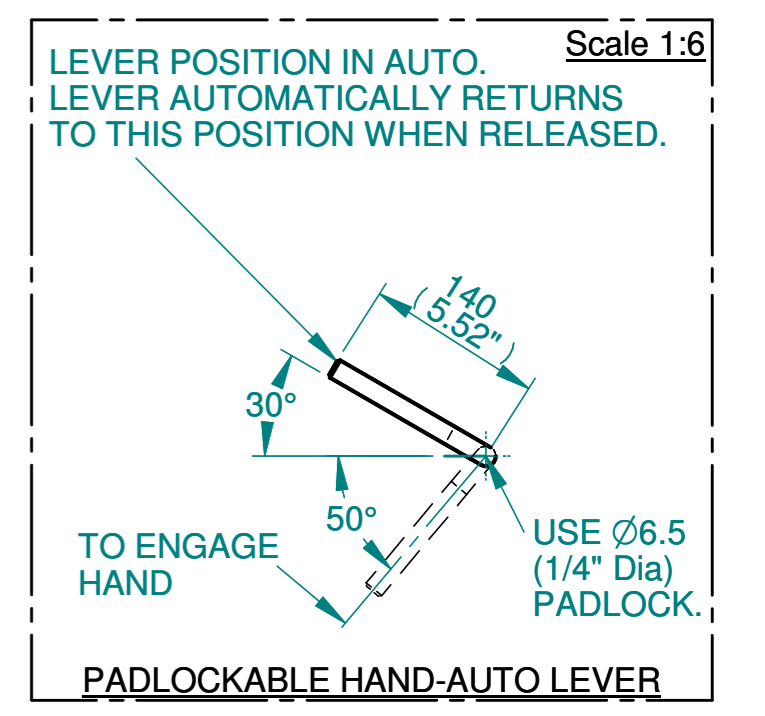
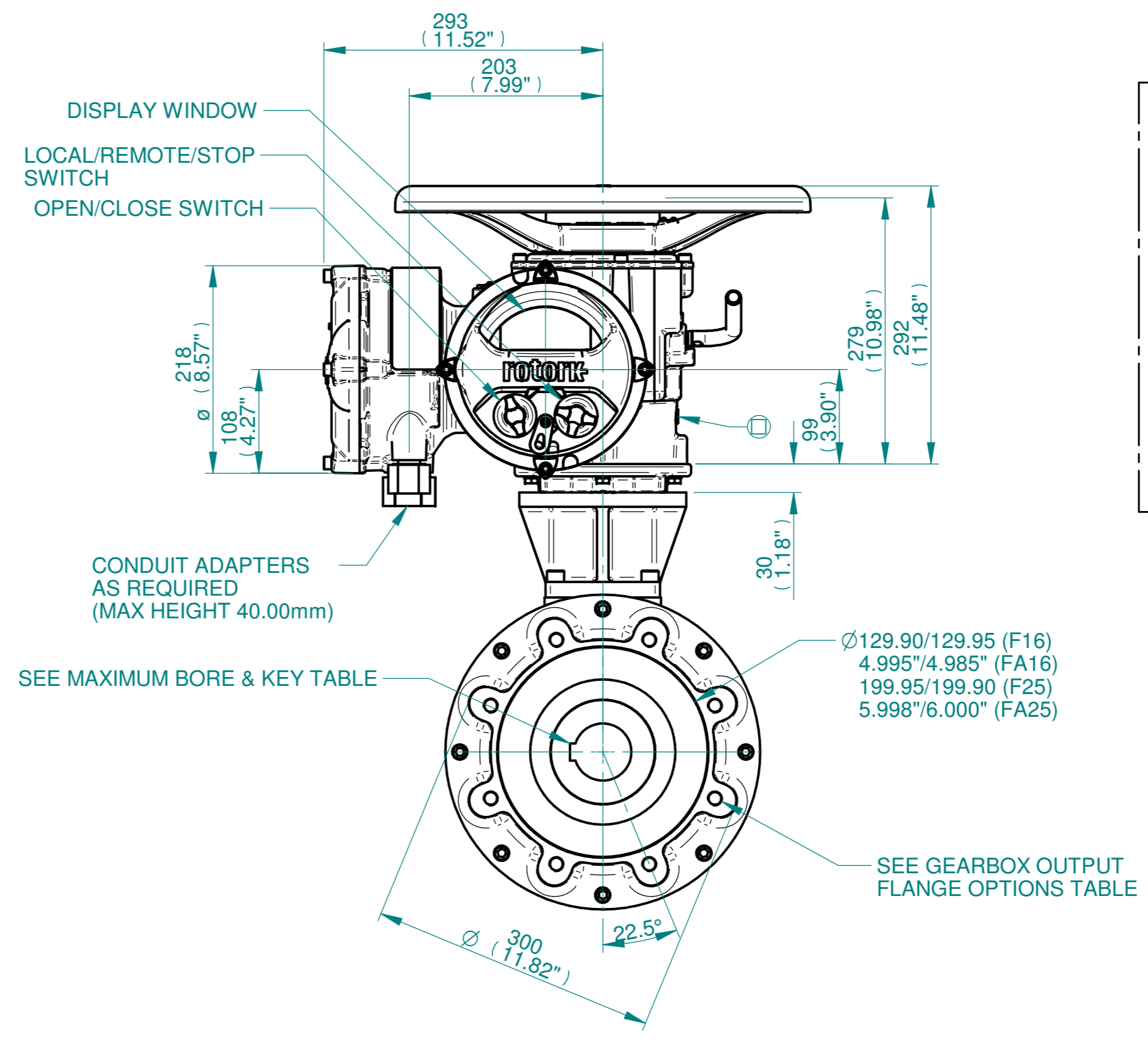
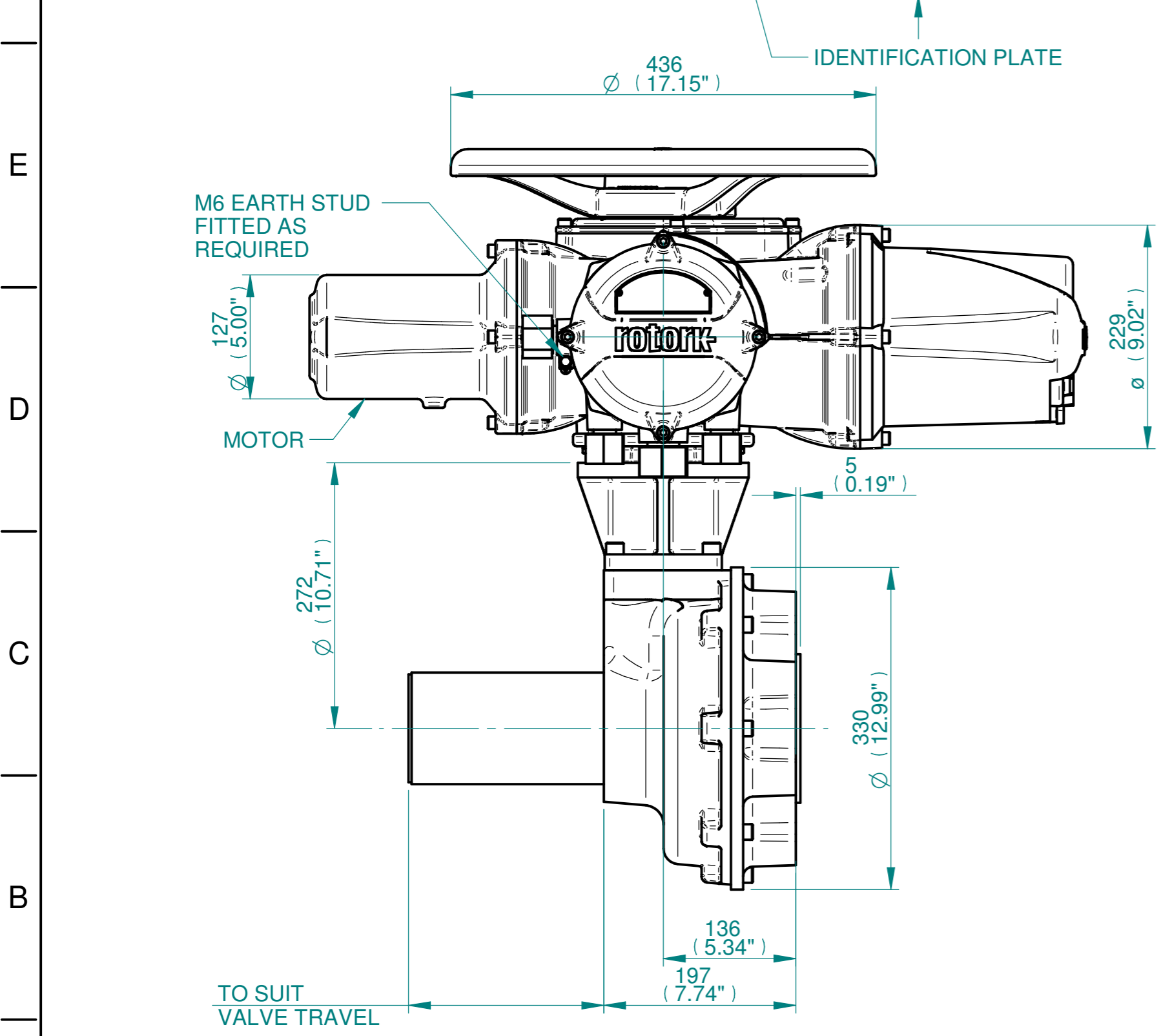
**NOTES:**  
 :DIMENSIONS WITH "\*" INDICATE COVER REMOVAL ALLOWANCE  
 :ELECTRONICS COVER OPTION "\*\*\*\*" WILL VARY DEPENDING ON CONFIGURATION  
 :NETT WEIGHT = F16:124kg/273lbs, F25:130kg/187lbs  
 : = OIL FILLER/DRAIN PLUG

:THE INTERFACE PROVIDED FOR MOUNTING THE ACTUATOR OR SECOND STAGE GEARBOX ONTO THE VALVE SHOULD CONFORM TO GOOD ENGINEERING PRACTICES, ENSURING ADEQUATELY TOLERANCED LIMITS FOR PARALLELISM, PERPENDICULARITY AND CONCENTRICITY.  
 :ROTORK CANNOT BE HELD LIABLE FOR DAMAGE TO OUR EQUIPMENT CAUSED BY EXCESSIVE LOADING FROM COVER TUBES. (SEE ALSO PUB000-124)

**CONDUIT ENTRIES**



	Hole 1	Hole 2	Hole 3	Hole 4
Size	As Required	As Required	As Required	As Required
Plugged	As Required	As Required	As Required	As Required
Gland	As Required	As Required	As Required	As Required



Actuator Size: IQ20/25, IB9, F16/F25/FA16/FA25		Gearbox output flange options								Maximum Bore & Key			
<b>rotork</b> www.rotork.com Rotork Controls Limited Bath, BA1 3JQ, England. Telephone 01225-733200	Title IQ20/25, TOP HANDWHEEL, IB9, F16/F25/FA16/FA25, Ratios 3:1,4:1 & 6:1, Installation Details Drawn JLF Checked NJC Date 12-MAR-15 Ref SALES Project Ref QUOTATION	Designation	F25	F30	-	-	FA25	FA30	-	-	Key form	Ø Bore	Key size
		No. Holes	8	8	-	-	8	8	-	-	Rectangle (BS4235)	76	22 X 14
		Hole size	M16	M20	-	-	5/8" UNC	3/4" UNC	-	-	Rectangle (ANSI B17.1)	3"	3/4 X 1/2"
		PCD	254	298	-	-	10"	11.75"	-	-	Square (ANSI B17.1)	2-3/4"	3/4"

Issue	Description
3	F14 Base change

Scale: 1:5 THIRD ANGLE PROJECTION

Drawing Number	Issue No	Sheet No
I12THWIB9STD	3	1 of 1