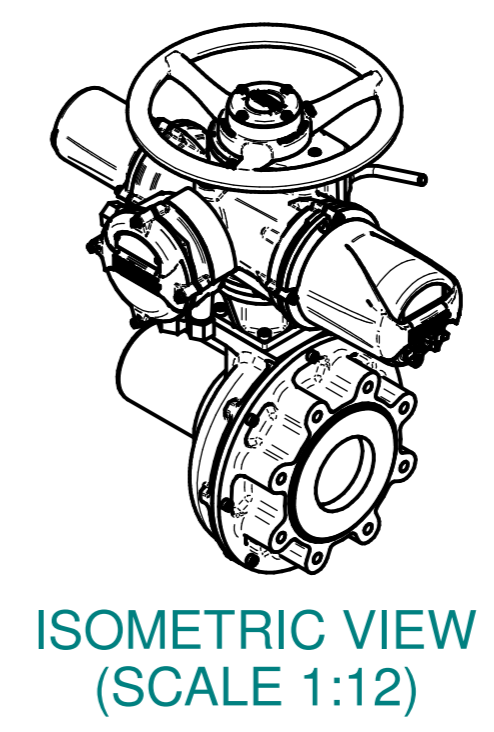
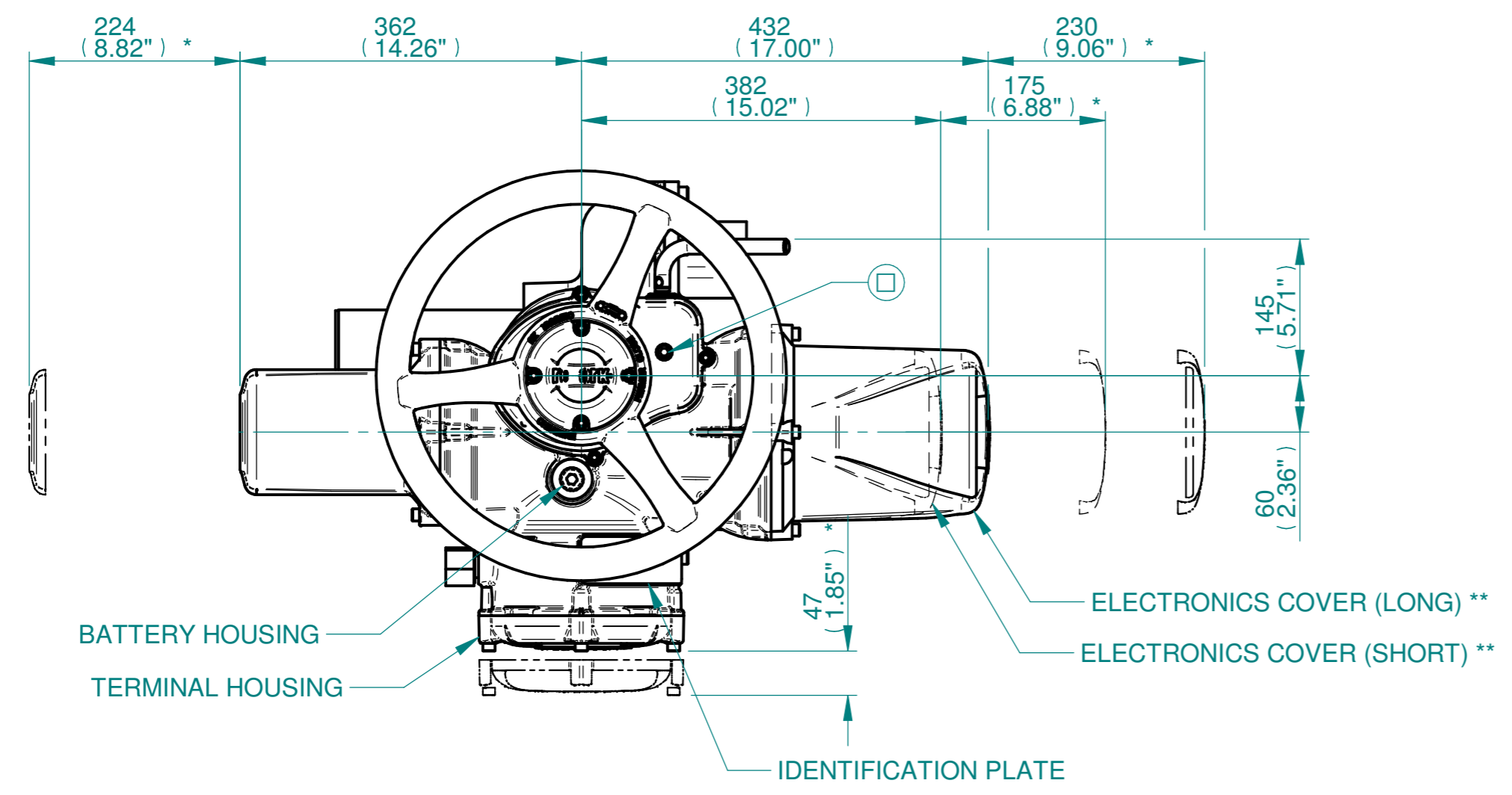
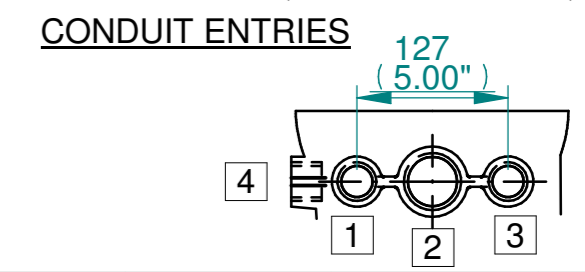


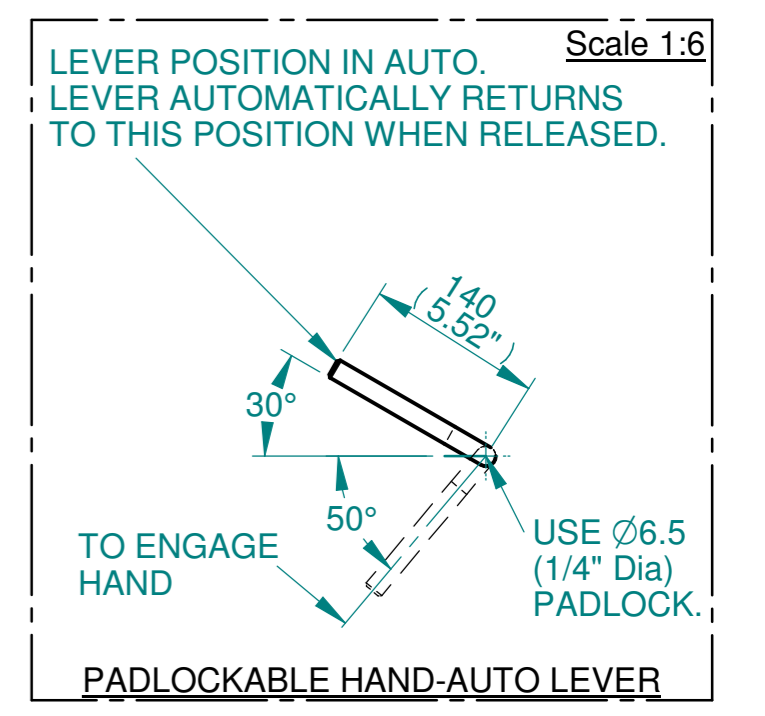
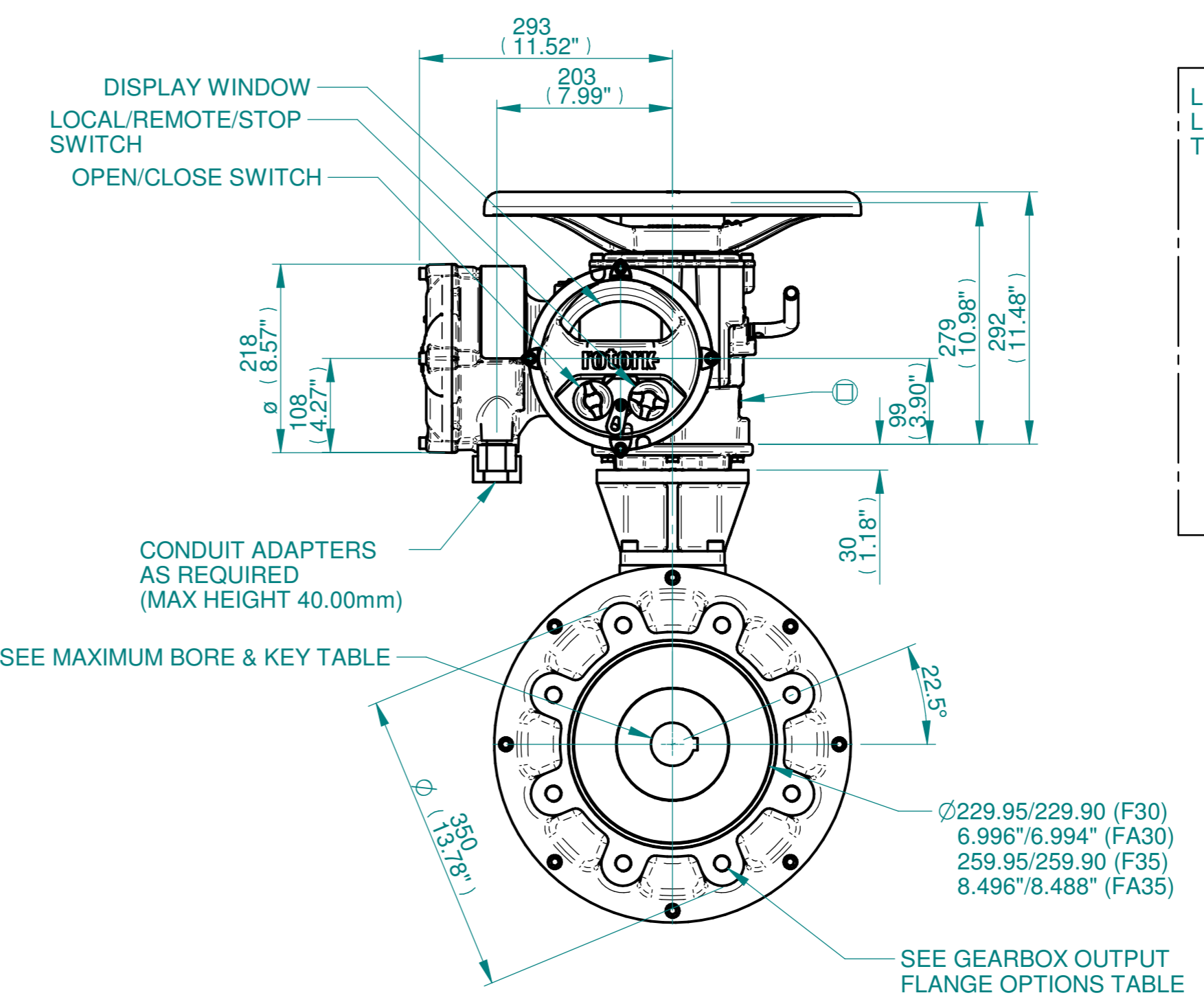
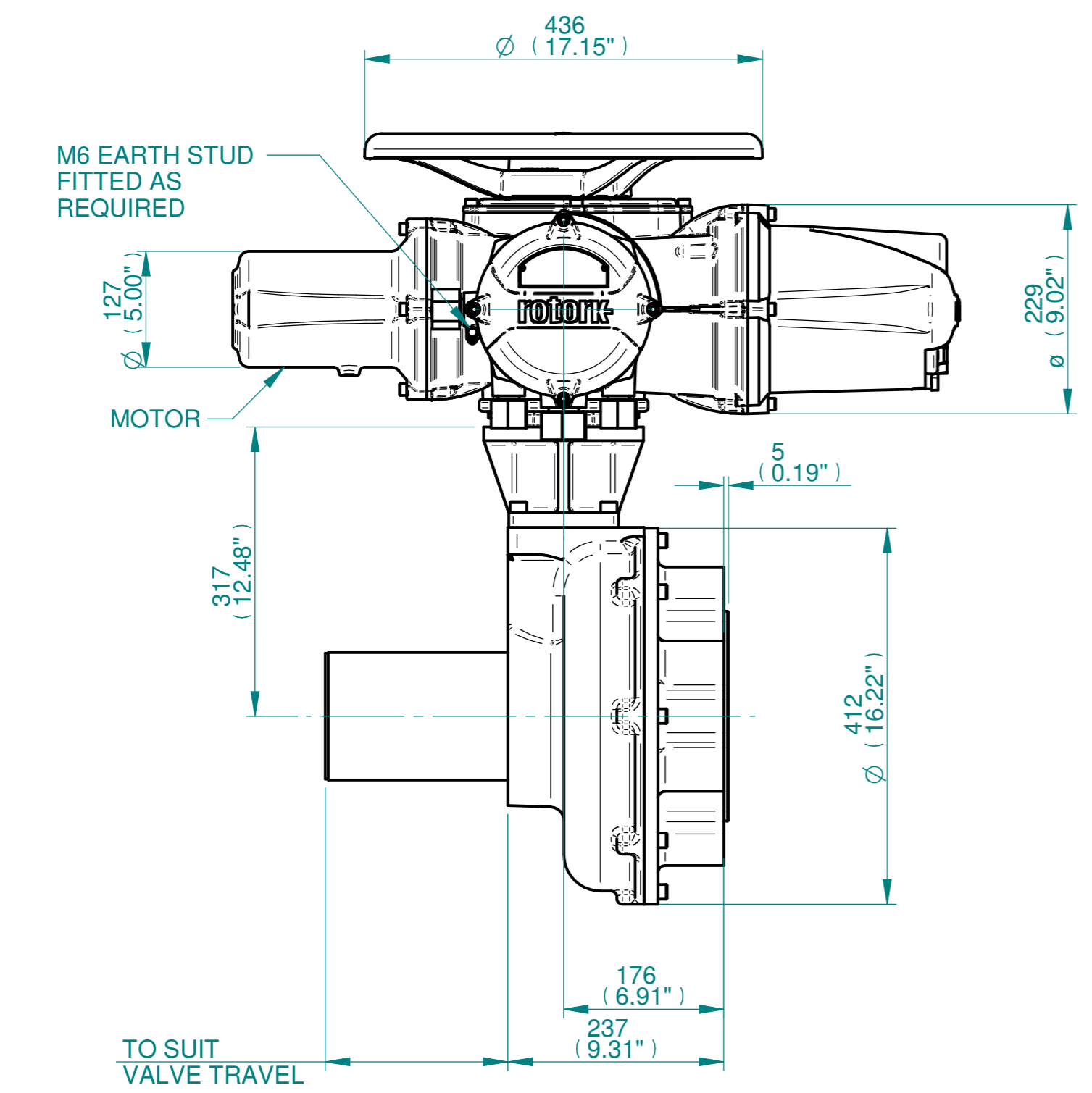
H
G
F
E
D
C
B
A



NOTES:
:DIMENSIONS WITH "*" INDICATE COVER REMOVAL ALLOWANCE
:ELECTRONICS COVER OPTION "****" WILL VARY DEPENDING ON CONFIGURATION
:NETT WEIGHT = F30:179kg/395lbs,F35:189kg/417lbs
: = OIL FILLER/DRAIN PLUG
:THE INTERFACE PROVIDED FOR MOUNTING THE ACTUATOR OR SECOND STAGE GEARBOX ONTO THE VALVE SHOULD CONFORM TO GOOD ENGINEERING PRACTICES, ENSURING ADEQUATELY TOLERANCED LIMITS FOR PARALLELISM, PERPENDICULARITY AND CONCENTRICITY.
:ROTORK CANNOT BE HELD LIABLE FOR DAMAGE TO OUR EQUIPMENT CAUSED BY EXCESSIVE LOADING FROM COVER TUBES. (SEE ALSO PUB000-124)



	Hole 1	Hole 2	Hole 3	Hole 4
Size	As Required	As Required	As Required	As Required
Plugged	As Required	As Required	As Required	As Required
Gland	As Required	As Required	As Required	As Required



rotork
www.rotork.com
Rotork Controls Limited
Bath, BA1 3JQ, England.
Telephone 01225-733200

Actuator Size: IQ20/25, IB11, F30/F35/FA30/FA35		Gearbox output flange options								Maximum Bore & Key		
Title IQ20/25, TOP HANDWHEEL, IB11, F30/F35/FA30/FA35, Ratios 4:1 & 6:1, Installation Details Drawn JLF Checked NJC Date 13-MAR-15 Ref SALES Project Ref QUOTATION	Designation	F30	F35	-	-	FA30	FA35	-	-	Key form	Ø Bore	Key size
	No. Holes	8	8	-	-	8	8	-	-	Rectangle (BS4235)	96	28 X 16
	Hole size	M20	M30	-	-	3/4" UNC	1" UNC	-	-	Rectangle (ANSI B17.1)	3-3/4"	7/8 X 5/8"
	PCD	298	356	-	-	11.75"	14"	-	-	Square (ANSI B17.1)	3-1/2"	7/8"

Issue	Description
3	F14 Base change

Scale: 1:6
THIRD ANGLE PROJECTION
A21 Drawing Number Issue No Sheet No
I12THWIB11STD 3 1 of 1

1 2 3 4 5 6 7 8 9 10 11 12