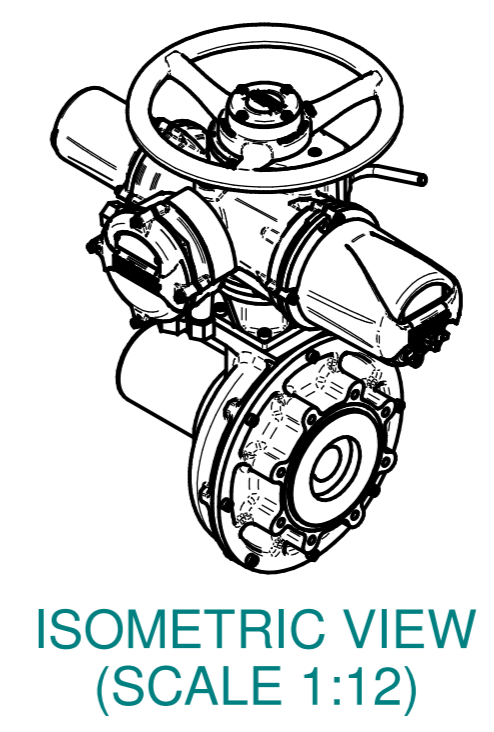
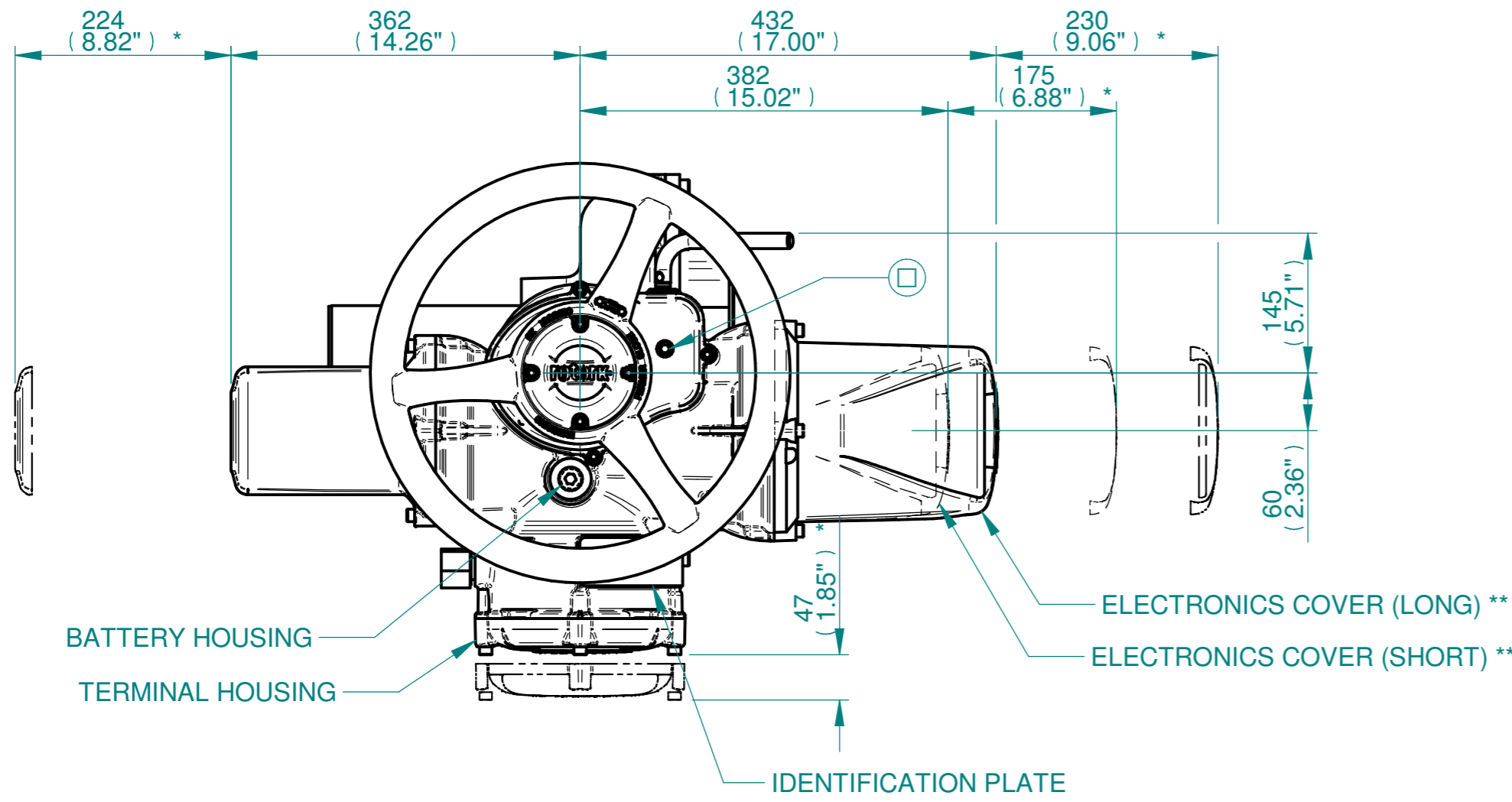
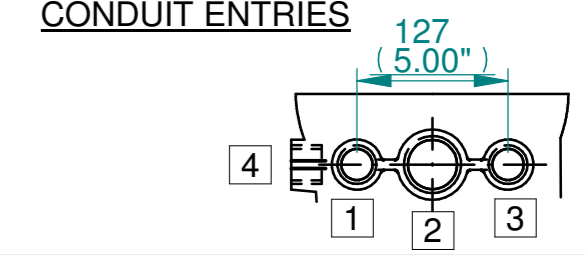


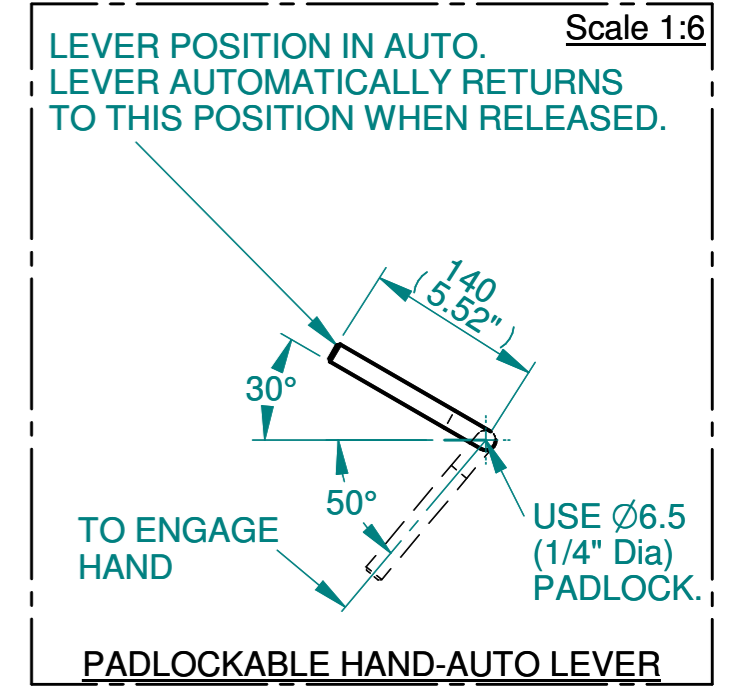
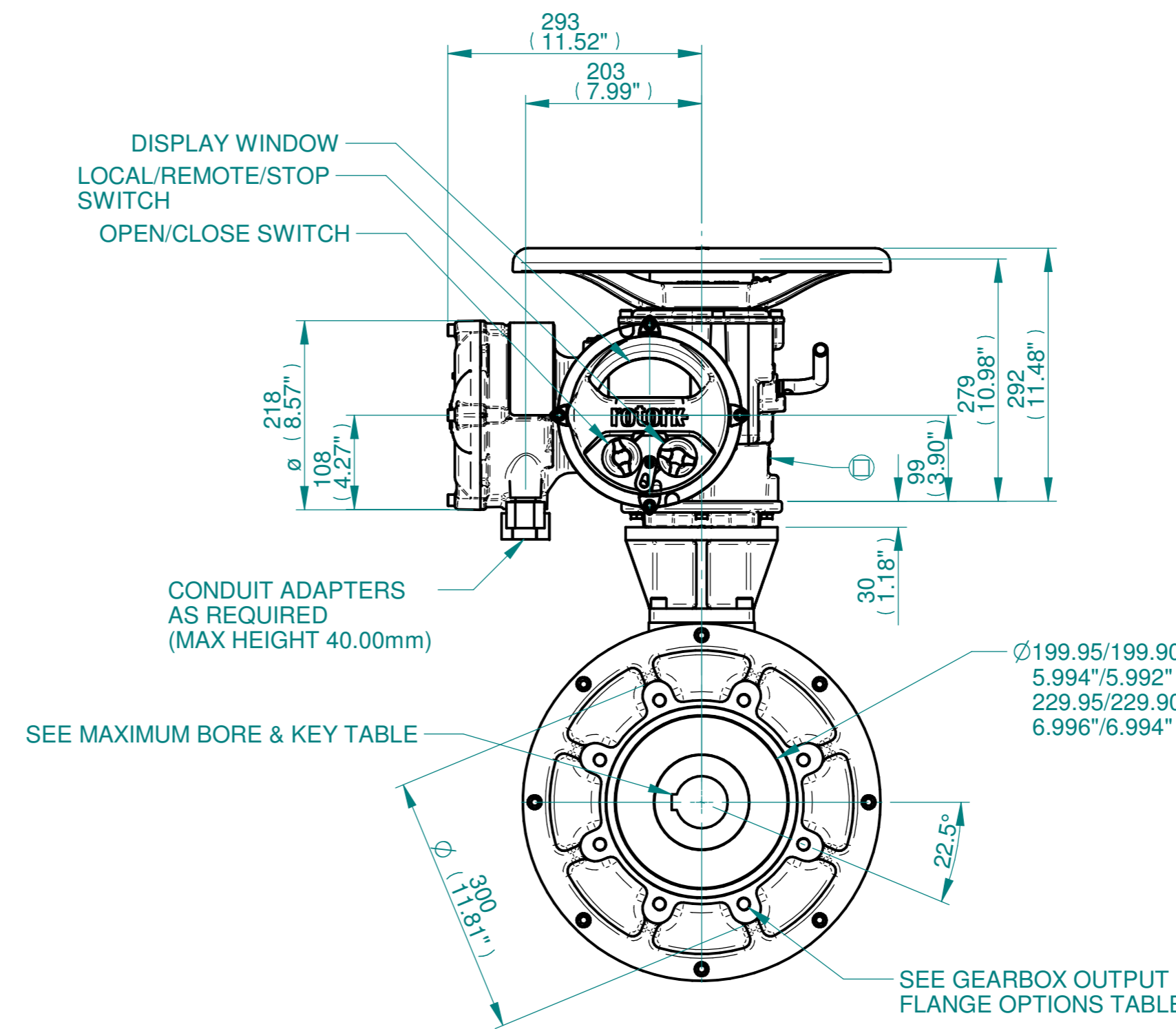
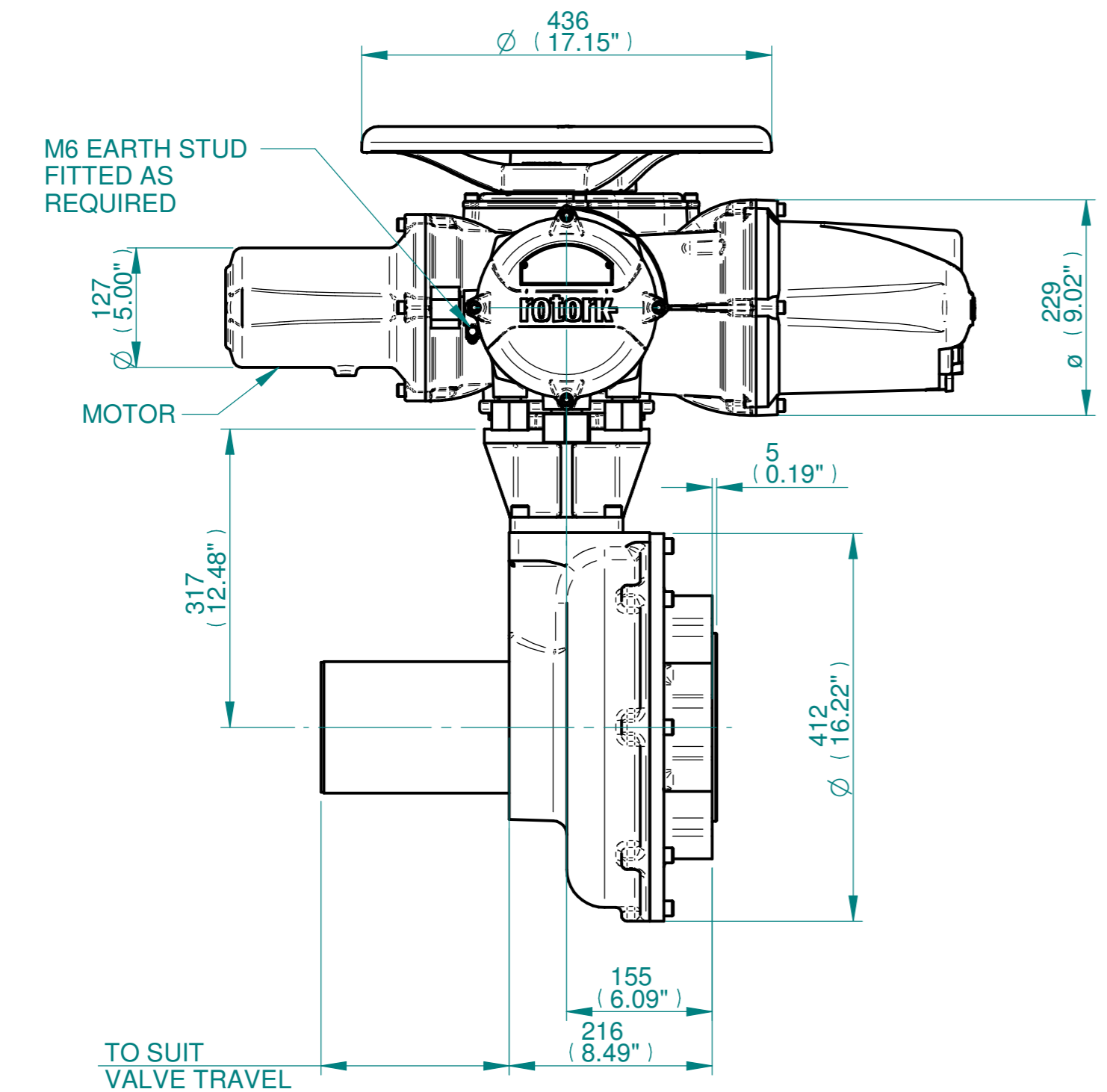
H  
G  
F  
E  
D  
C  
B  
A



**NOTES:**  
:DIMENSIONS WITH "\*" INDICATE COVER REMOVAL ALLOWANCE  
:ELECTRONICS COVER OPTION "\*\*\*\*" WILL VARY DEPENDING ON CONFIGURATION  
:NETT WEIGHT = F25:159kg/350lbs,F30:163kg/359lbs  
: = OIL FILLER/DRAIN PLUG  
:THE INTERFACE PROVIDED FOR MOUNTING THE ACTUATOR OR SECOND STAGE GEARBOX ONTO THE VALVE SHOULD CONFORM TO GOOD ENGINEERING PRACTICES, ENSURING ADEQUATELY TOLERANCED LIMITS FOR PARALLELISM, PERPENDICULARITY AND CONCENTRICITY.  
:ROTORK CANNOT BE HELD LIABLE FOR DAMAGE TO OUR EQUIPMENT CAUSED BY EXCESSIVE LOADING FROM COVER TUBES. (SEE ALSO PUB000-124)



	Hole 1	Hole 2	Hole 3	Hole 4
Size	As Required	As Required	As Required	As Required
Plugged	As Required	As Required	As Required	As Required
Gland	As Required	As Required	As Required	As Required



**rotork**  
www.rotork.com  
Rotork Controls Limited  
Bath, BA1 3JQ, England.  
Telephone 01225-733200

Actuator Size: IQ20/25, IB10, F25/F30/FA25/FA30		Gearbox output flange options								Maximum Bore & Key			
Title	IQ20/25, TOP HANDWHEEL, IB10, F25/F30/FA25/FA30, Ratios 4:1 & 6:1, Installation Details	Designation	F25	F30	-	-	FA25	FA30	-	-	Key form	Ø Bore	Key size
Drawn	JLF	No. Holes	8	8	-	-	8	8	-	-	Rectangle (BS4235)	76	22 X 14
Checked	NJC	Hole size	M16	M20	-	-	5/8" UNC	3/4" UNC	-	-	Rectangle (ANSI B17.1)	3"	3/4 X 1/2"
Date	13-MAR-15	PCD	254	298	-	-	10"	11.75"	-	-	Square (ANSI B17.1)	2-3/4"	3/4"
Ref	SALES	Project Ref	QUOTATION										

Issue	Description
3	F14Base change
Scale: 1:6	
THIRD ANGLE PROJECTION	
A2	Drawing Number Issue No Sheet No
I12THWIB10STD	3 1 of 1

1 2 3 4 5 6 7 8 9 10 11 12