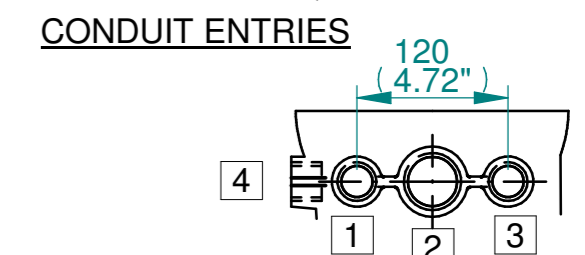
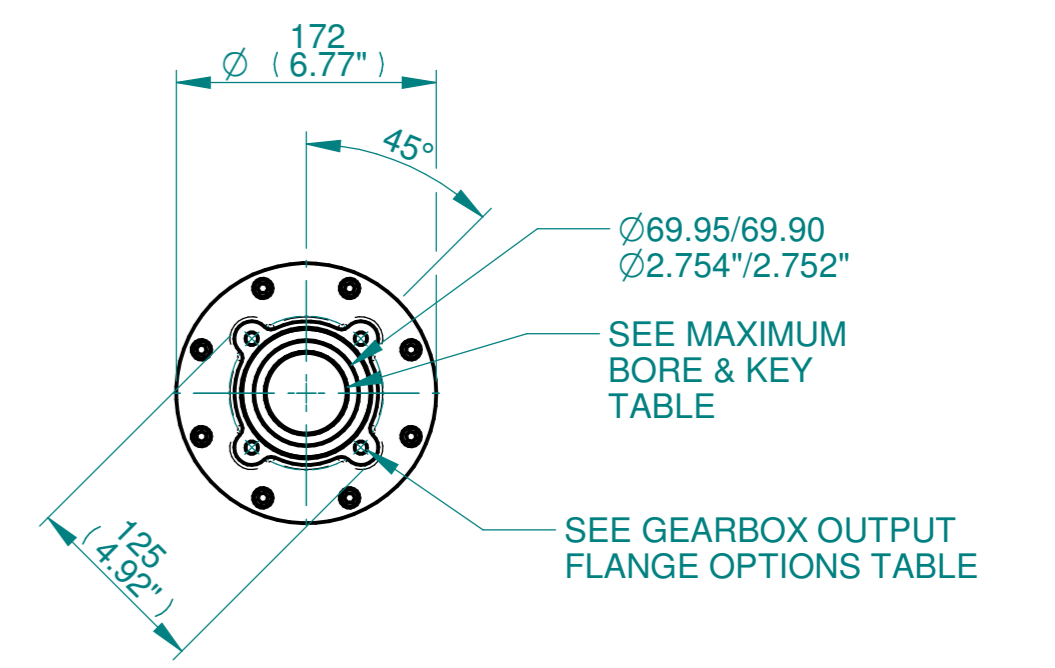
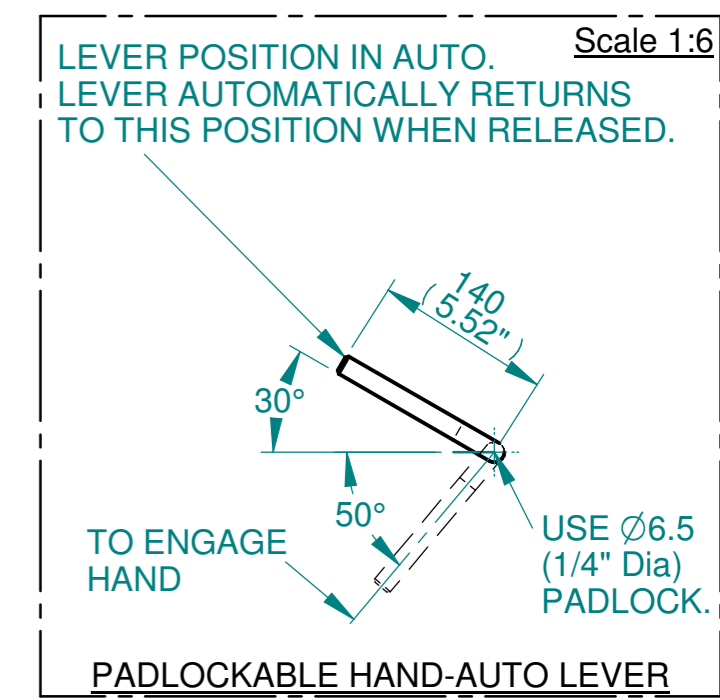
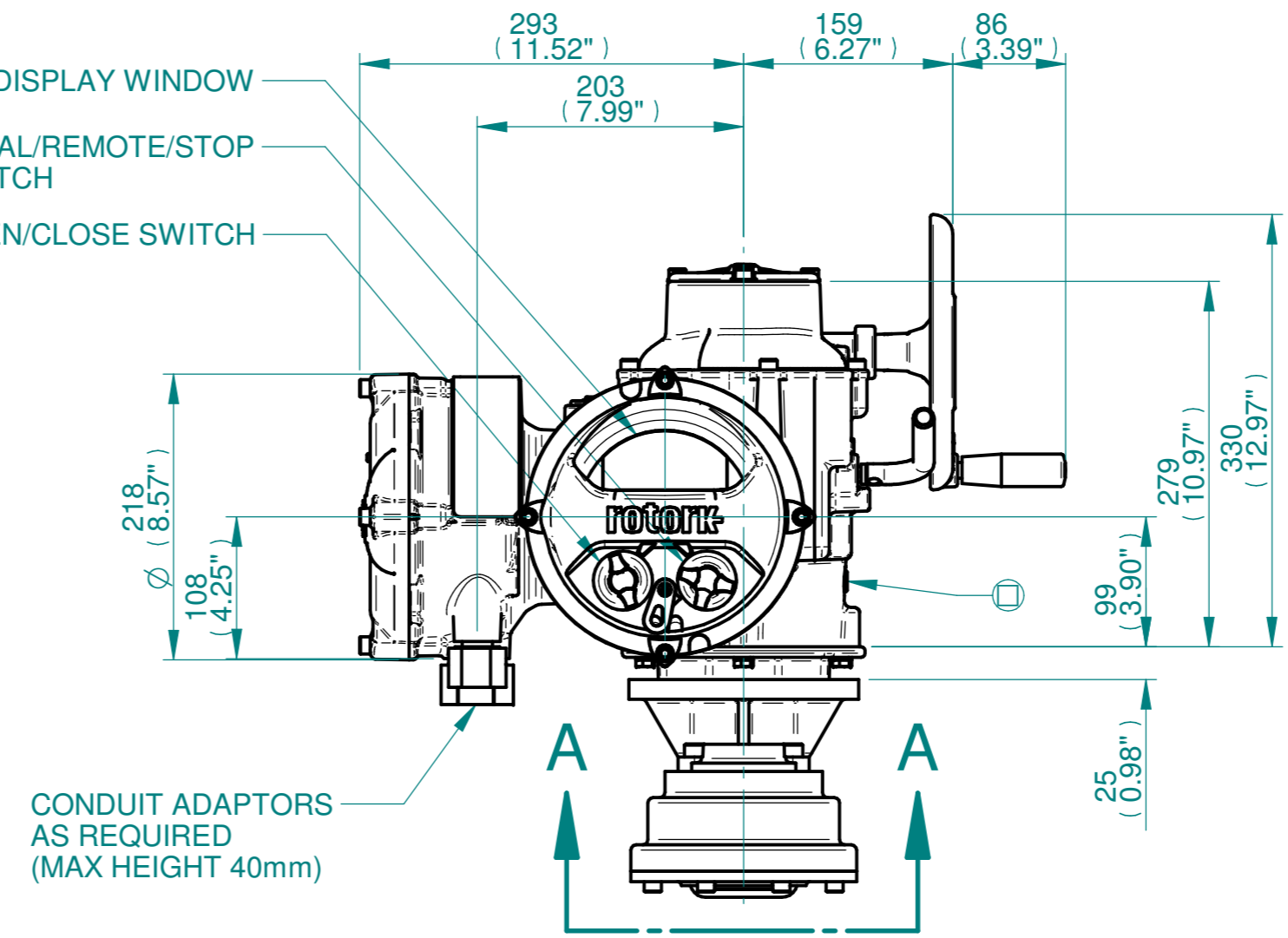
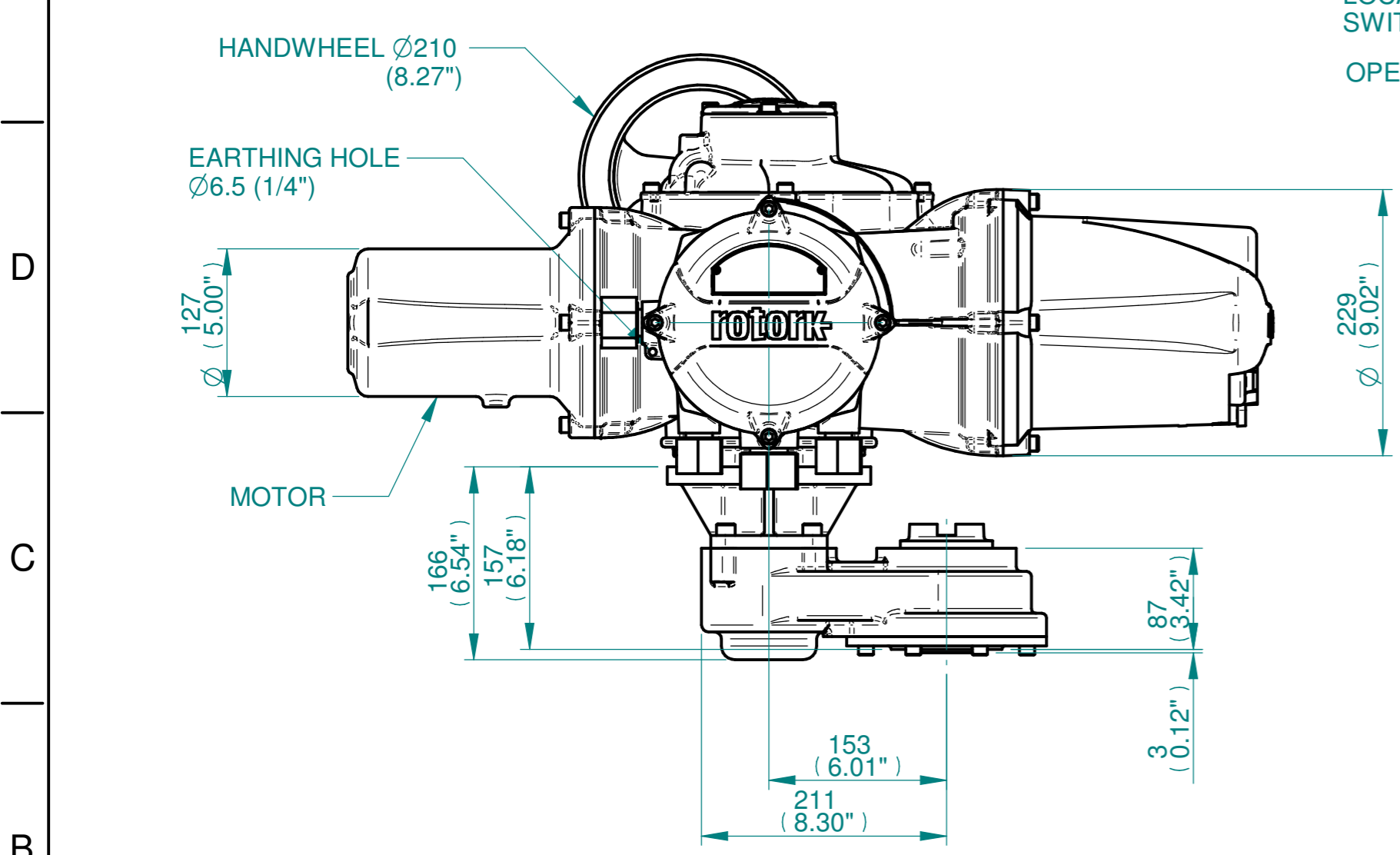


ISOMETRIC VIEW  
1:10

**NOTES:**  
 :DIMENSIONS WITH "\*" INDICATE COVER REMOVAL ALLOWANCE  
 :ELECTRONICS COVER OPTION "\*" WILL VARY DEPENDING ON CONFIGURATION  
 :NETT WEIGHT = 71kg/156lbs  
 : = OIL FILLER/DRAIN PLUG  
 :THE INTERFACE PROVIDED FOR MOUNTING THE ACTUATOR OR SECOND STAGE GEARBOX ONTO THE VALVE SHOULD CONFORM TO GOOD ENGINEERING PRACTICES, ENSURING ADEQUATELY TOLERANCED LIMITS FOR PARALLELISM, PERPENDICULARITY AND CONCENTRICITY.  
 :ROTORCANNOT BE HELD LIABLE FOR DAMAGE TO OUR EQUIPMENT CAUSED BY EXCESSIVE LOADING FROM COVER TUBES. (SEE ALSO PUB000-124)



	Hole 1	Hole 2	Hole 3	Hole 4
Size	As Required	As Required	As Required	As Required
Plugged	As Required	As Required	As Required	As Required
Gland	As Required	As Required	As Required	As Required



VIEW A-A

3D Models are available in various formats under the same drawing number

www.rotork.com Rotork Controls Limited Bath, BA1 3JQ, England. Telephone 01225-733200	Actuator Size: IQ19/20/25, IS2		Gearbox output flange options							Maximum Bore & Key				
	Title IQ19/20/25, SIDE HANDWHEEL, IS2, F10, FA10, Ratios 1:1, 2:1 & 3:1 Installation Details		Designation	F10	-	-	-	FA10	-	-	-	Key form	Ø Bore	Key size
	Drawn DH Checked JBA Date NOV 18		No. Holes	4	-	-	-	4	-	-	-	Rectangle (BS4235)	40	12 X 8
	Ref SALES Project Ref QUOTATION		Hole size	M10	-	-	-	3/8" UNC	-	-	-	-	-	-
			PCD	102	-	-	-	4"	-	-	-	-	-	-

Issue	Description
1	FIRST ISSUE
Scale: 1:5	
THIRD ANGLE PROJECTION	
A2	Drawing Number Issue No Sheet No
I12SHWIS2STD	1 1 of 1