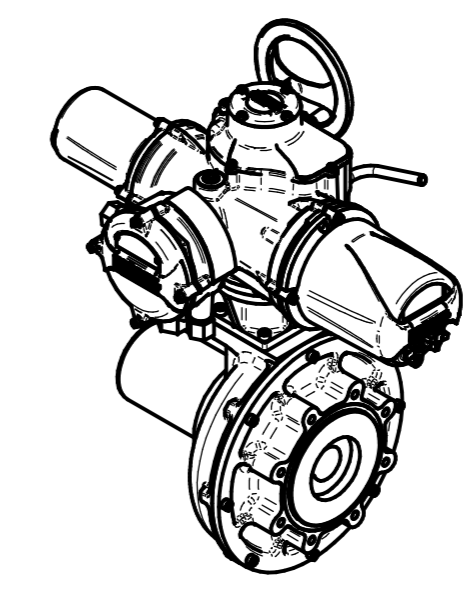
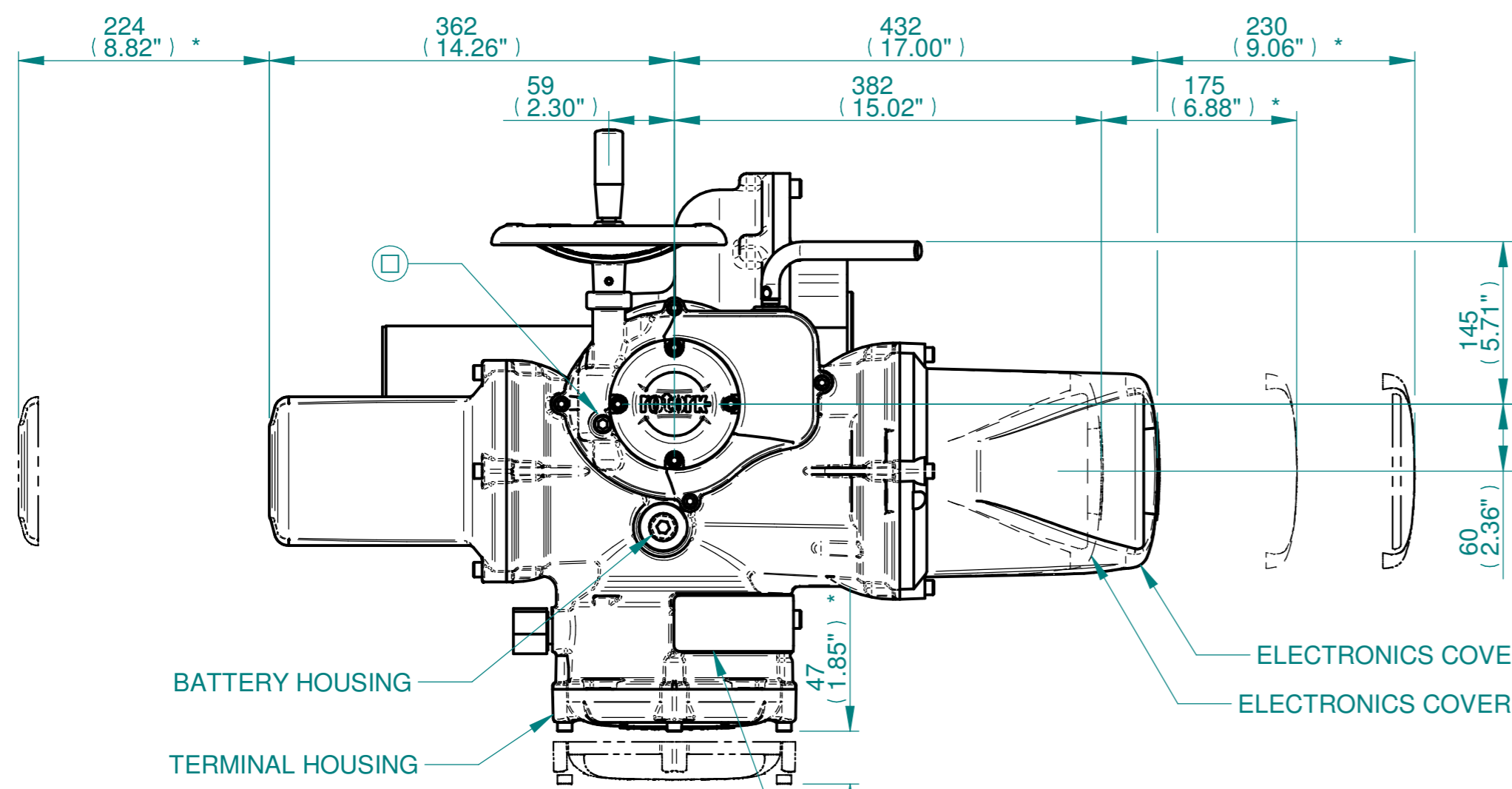
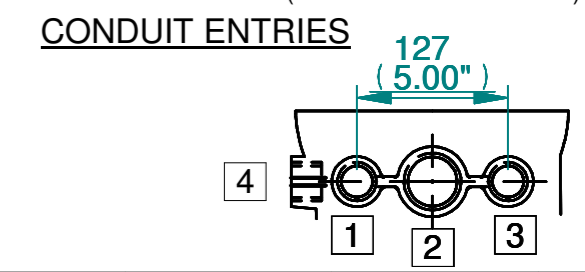


H
G
F
E
D
C
B
A

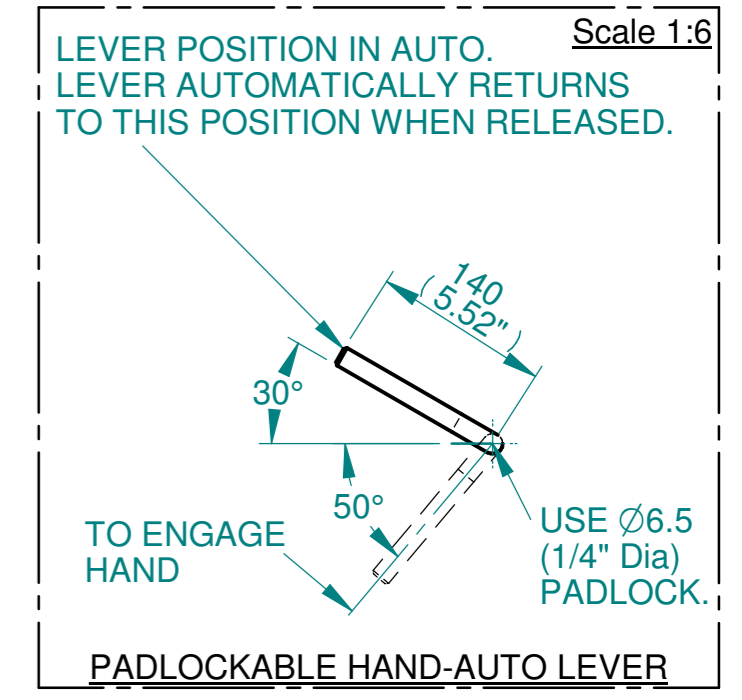
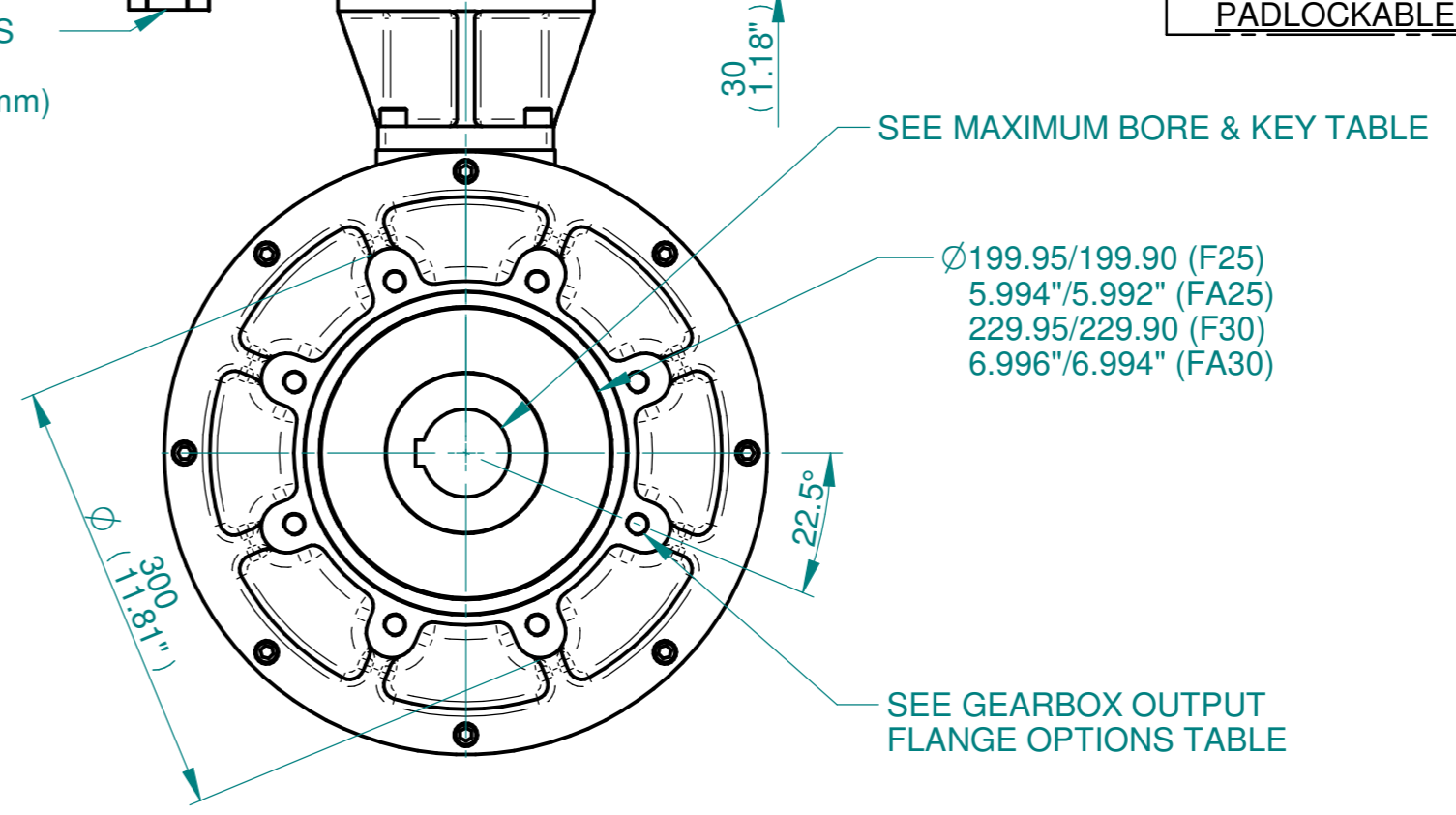
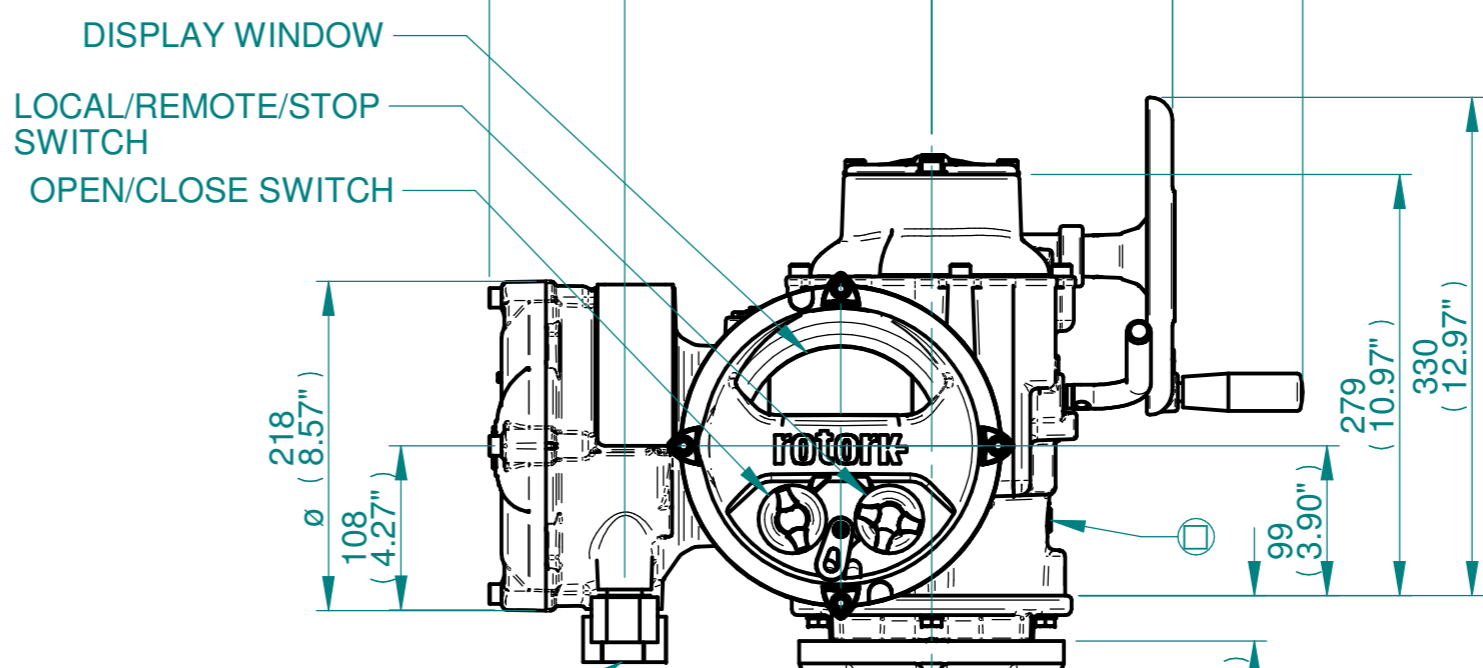
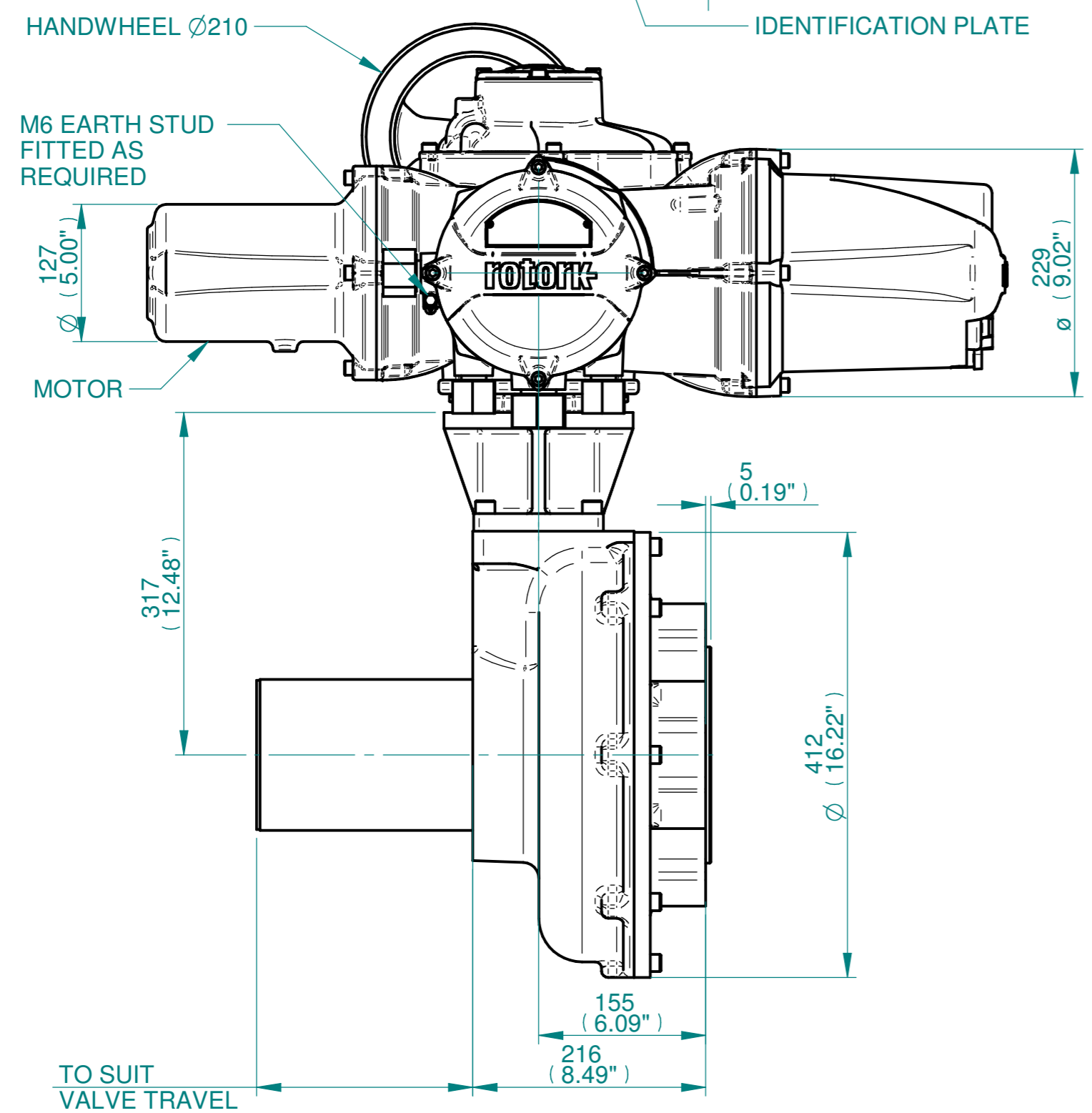


ISOMETRIC VIEW
(SCALE 1:12)

NOTES:
 :DIMENSIONS WITH "*" INDICATE COVER REMOVAL ALLOWANCE
 :ELECTRONICS COVER OPTION "****" WILL VARY DEPENDING ON CONFIGURATION
 :NETT WEIGHT = F25:159kg/350lbs, F30:163kg/359lbs
 : = OIL FILLER/DRAIN PLUG
 :THE INTERFACE PROVIDED FOR MOUNTING THE ACTUATOR OR SECOND STAGE GEARBOX ONTO THE VALVE SHOULD CONFORM TO GOOD ENGINEERING PRACTICES, ENSURING ADEQUATELY TOLERANCED LIMITS FOR PARALLELISM, PERPENDICULARITY AND CONCENTRICITY.
 :ROTORK CANNOT BE HELD LIABLE FOR DAMAGE TO OUR EQUIPMENT CAUSED BY EXCESSIVE LOADING FROM COVER TUBES. (SEE ALSO PUB000-124)



| | Hole 1 | Hole 2 | Hole 3 | Hole 4 |
|---------|-------------|-------------|-------------|-------------|
| Size | As Required | As Required | As Required | As Required |
| Plugged | As Required | As Required | As Required | As Required |
| Gland | As Required | As Required | As Required | As Required |



| Actuator Size: IQ20/25, IB10, F25/F30/FA25/FA30 | | Gearbox output flange options | | | | | | | | Maximum Bore & Key | | |
|---|-------------|-------------------------------|-----|---|---|----------|----------|---|---|------------------------|--------|------------|
| Title IQ20/25, SIDE HANDWHEEL, IB10, F25/F30/FA25/FA30, Ratios 4:1 & 6:1, Installation Details Drawn JLF Checked NJC Date 11-MAR-15 Ref SALES Project Ref QUOTATION | Designation | F25 | F30 | - | - | FA25 | FA30 | - | - | Key form | Ø Bore | Key size |
| | No. Holes | 8 | 8 | - | - | 8 | 8 | - | - | Rectangle (BS4235) | 76 | 22 X 14 |
| | Hole size | M16 | M20 | - | - | 5/8" UNC | 3/4" UNC | - | - | Rectangle (ANSI B17.1) | 3" | 3/4 X 1/2" |
| | PCD | 254 | 298 | - | - | 10" | 11.75" | - | - | Square (ANSI B17.1) | 2-3/4" | 3/4" |

| Issue | Description |
|-------|-----------------|
| 3 | F14 Base change |

Scale: 1:5 THIRD ANGLE PROJECTION

| Drawing Number | Issue No | Sheet No |
|----------------|----------|----------|
| I12SHWIB10STD | 3 | 1 of 1 |

rotork
www.rotork.com
Rotork Controls Limited
Bath, BA1 3JQ, England.
Telephone 01225-733200

1 2 3 4 5 6 7 8 9 10 11 12