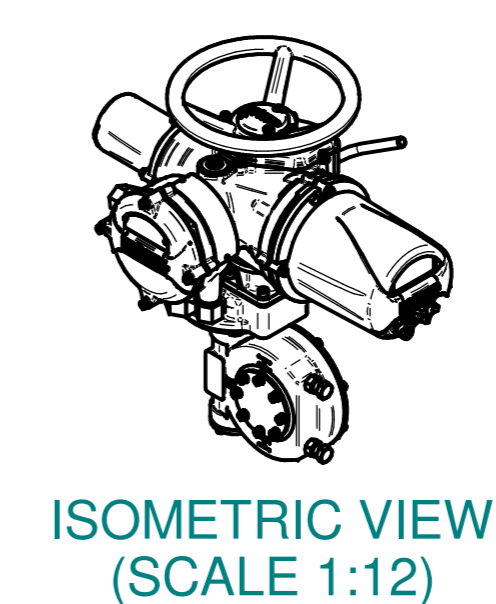
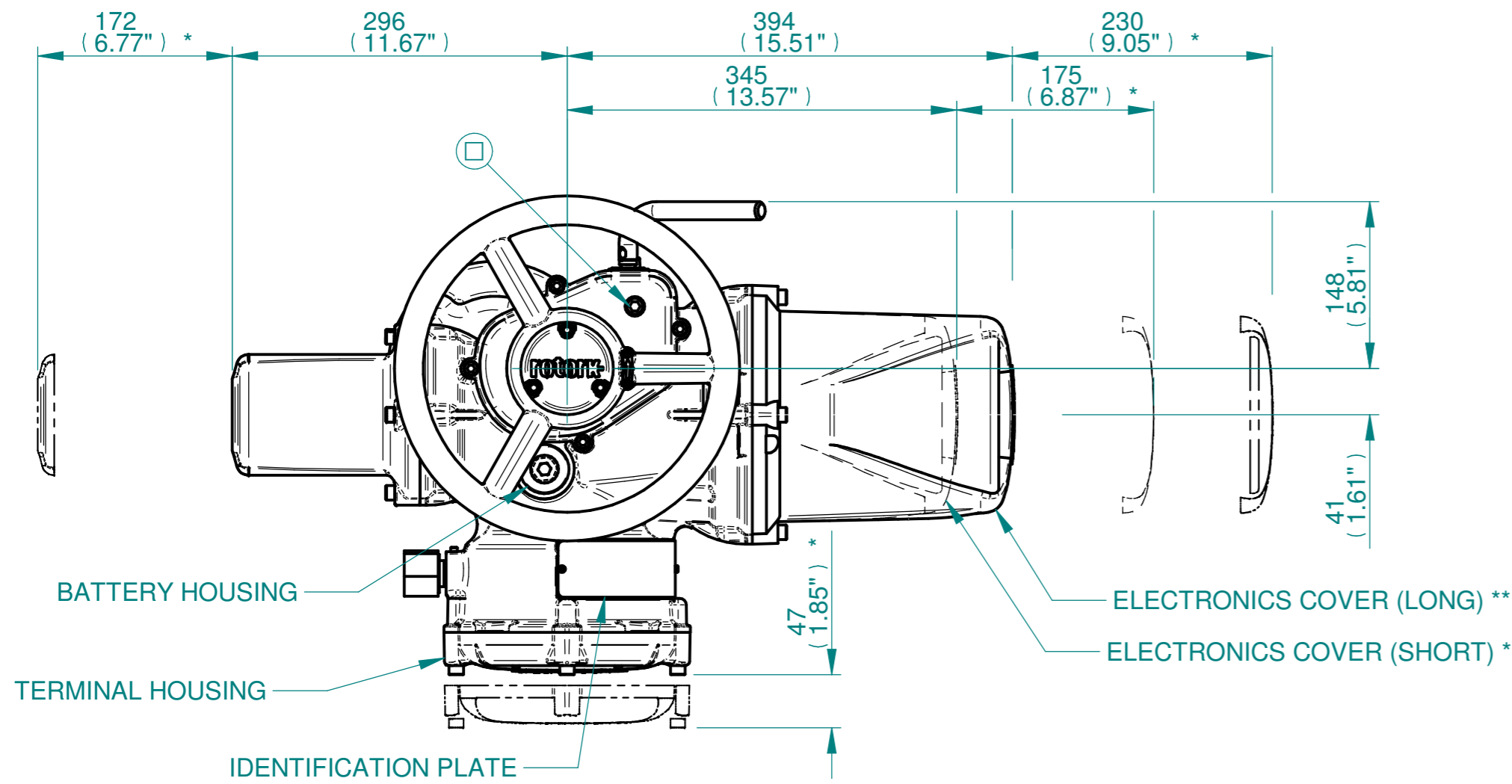
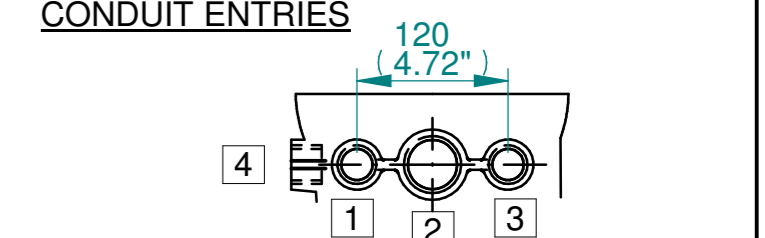


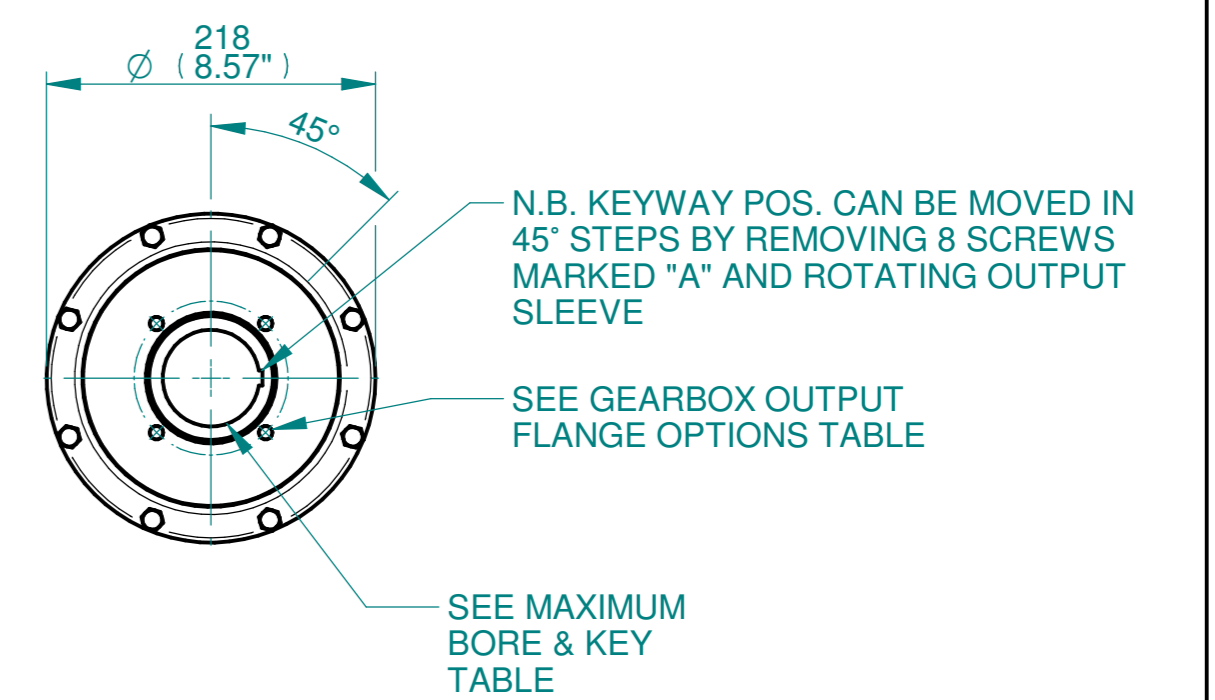
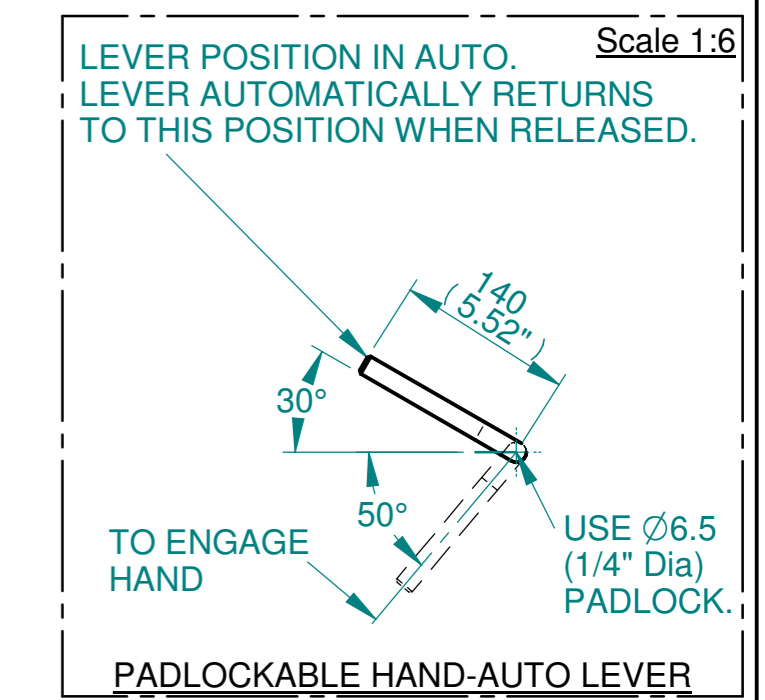
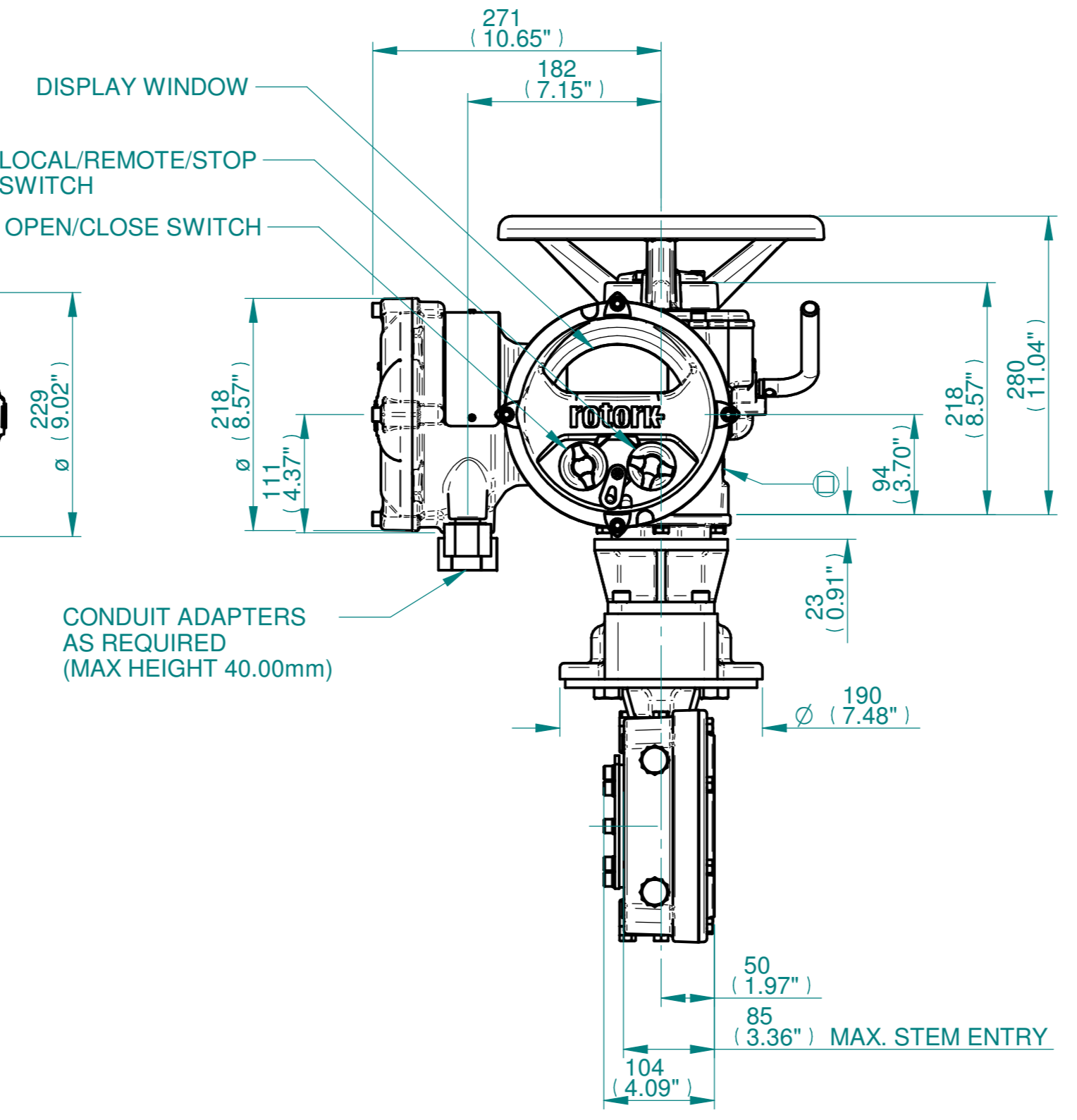
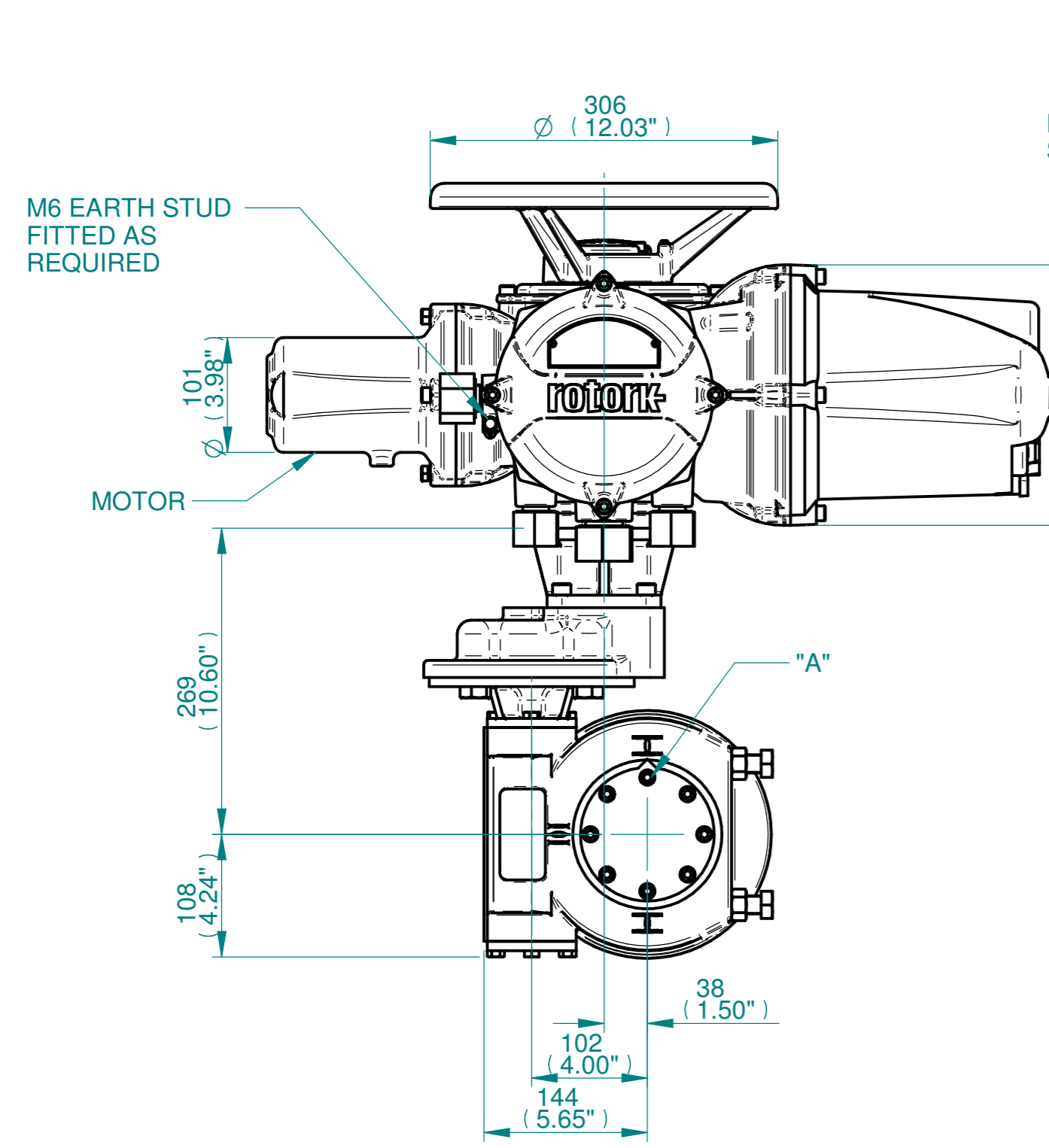
H
G
F
E
D
C
B
A



NOTES:
 :DIMENSIONS WITH "*" INDICATE COVER REMOVAL ALLOWANCE
 :ELECTRONICS COVER OPTION "*" WILL VARY DEPENDING ON CONFIGURATION
 :NETT WEIGHT = 64kg/141lbs
 : = OIL FILLER/DRAIN PLUG
 :THE INTERFACE PROVIDED FOR MOUNTING THE ACTUATOR OR SECOND STAGE GEARBOX ONTO THE VALVE SHOULD CONFORM TO GOOD ENGINEERING PRACTICES, ENSURING ADEQUATELY TOLERANCED LIMITS FOR PARALLELISM, PERPENDICULARITY AND CONCENTRICITY.
 :ROTORC KANNOT BE HELD LIABLE FOR DAMAGE TO OUR EQUIPMENT CAUSED BY EXCESSIVE LOADING FROM COVER TUBES. (SEE ALSO PUB000-124)



| | Hole 1 | Hole 2 | Hole 3 | Hole 4 |
|---------|-------------|-------------|-------------|-------------|
| Size | As Required | As Required | As Required | As Required |
| Plugged | As Required | As Required | As Required | As Required |
| Gland | As Required | As Required | As Required | As Required |



3D Models are available in various formats under the same drawing number

rotork
 www.rotork.com
 Rotork Controls Limited
 Bath, BA1 3JQ, England.
 Telephone 01225-733200

| Actuator Size: IQ10/12/18 IW4RL/MOW4RL | | Gearbox output flange options | | | | | | | | Maximum Bore & Key | | | |
|--|---|-------------------------------|-----|-----|-----|---|----------|----------|----------|--------------------|------------------------|--------------------|-------------|
| Title | IQ10/12/18, TOP HANDWHEEL, IW4RL / MOW4RL, F/FA10,12 & 14, Ratios 80 - 280:1 Installation Details | Designation | F10 | F12 | F14 | - | FA10 | FA12 | FA14 | - | Key form | \varnothing Bore | Key size |
| Drawn | TED | No. Holes | 4 | 4 | 4 | - | 4 | 4 | 4 | - | Rectangle (BS4235) | 64 | 18 X 11 |
| Checked | NJC | Hole size | M10 | M12 | M16 | - | 3/8" UNC | 1/2" UNC | 5/8" UNC | - | Rectangle (ANSI B17.1) | 2-1/2" | 5/8 X 7/16" |
| Date | 18-AUG-14 | PCD | 102 | 125 | 140 | - | 4" | 4.95" | 5.5" | - | Square (ANSI B17.1) | 2-1/4" | 1/2" SQ |
| Ref | SALES | Project Ref QUOTATION | | | | | | | | | | | |

| Issue | Description | |
|------------------------|----------------------|----------|
| 3 | OUTPUT FLANGE CHANGE | |
| Scale: 1:5 | | |
| THIRD ANGLE PROJECTION | | |
| Drawing Number | Issue No | Sheet No |
| 111THWIW4RLSTD | 3 | 1 of 1 |

1 2 3 4 5 6 7 8 9 10 11 12