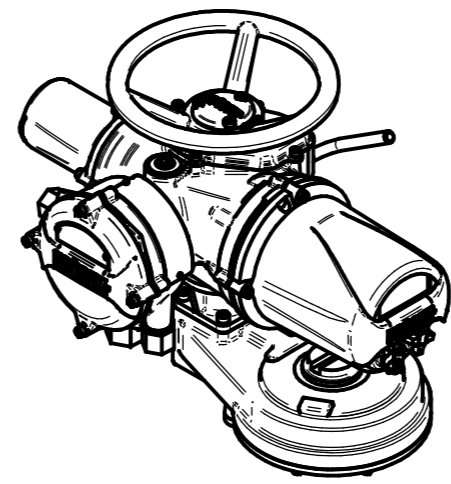
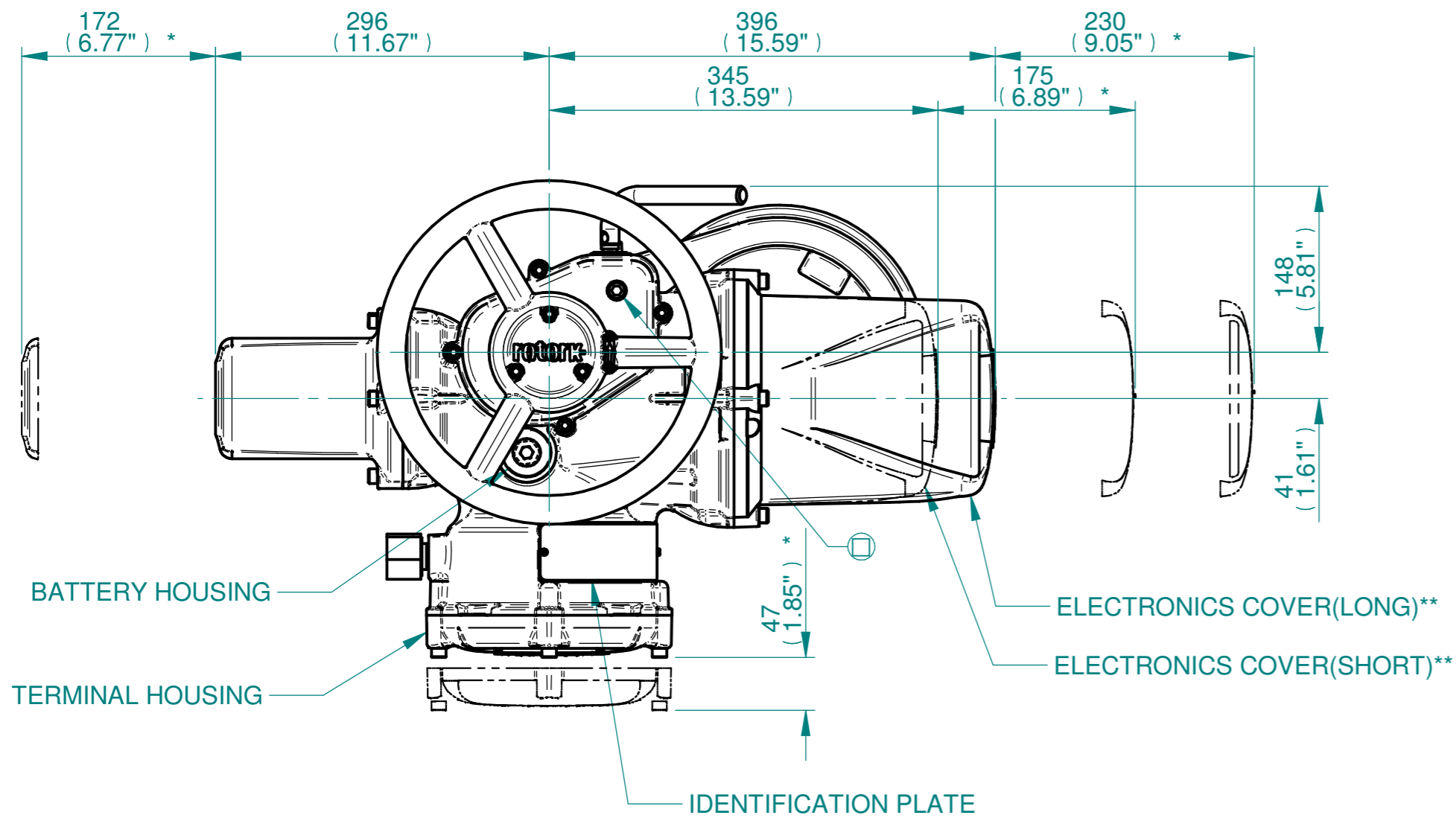


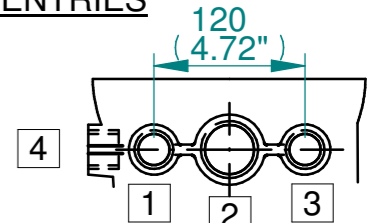
H  
G  
F  
E  
D  
C  
B  
A



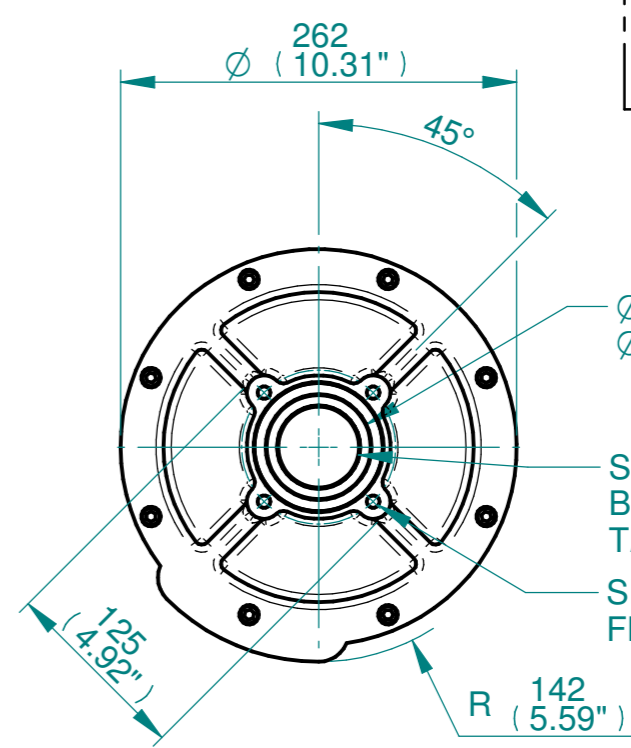
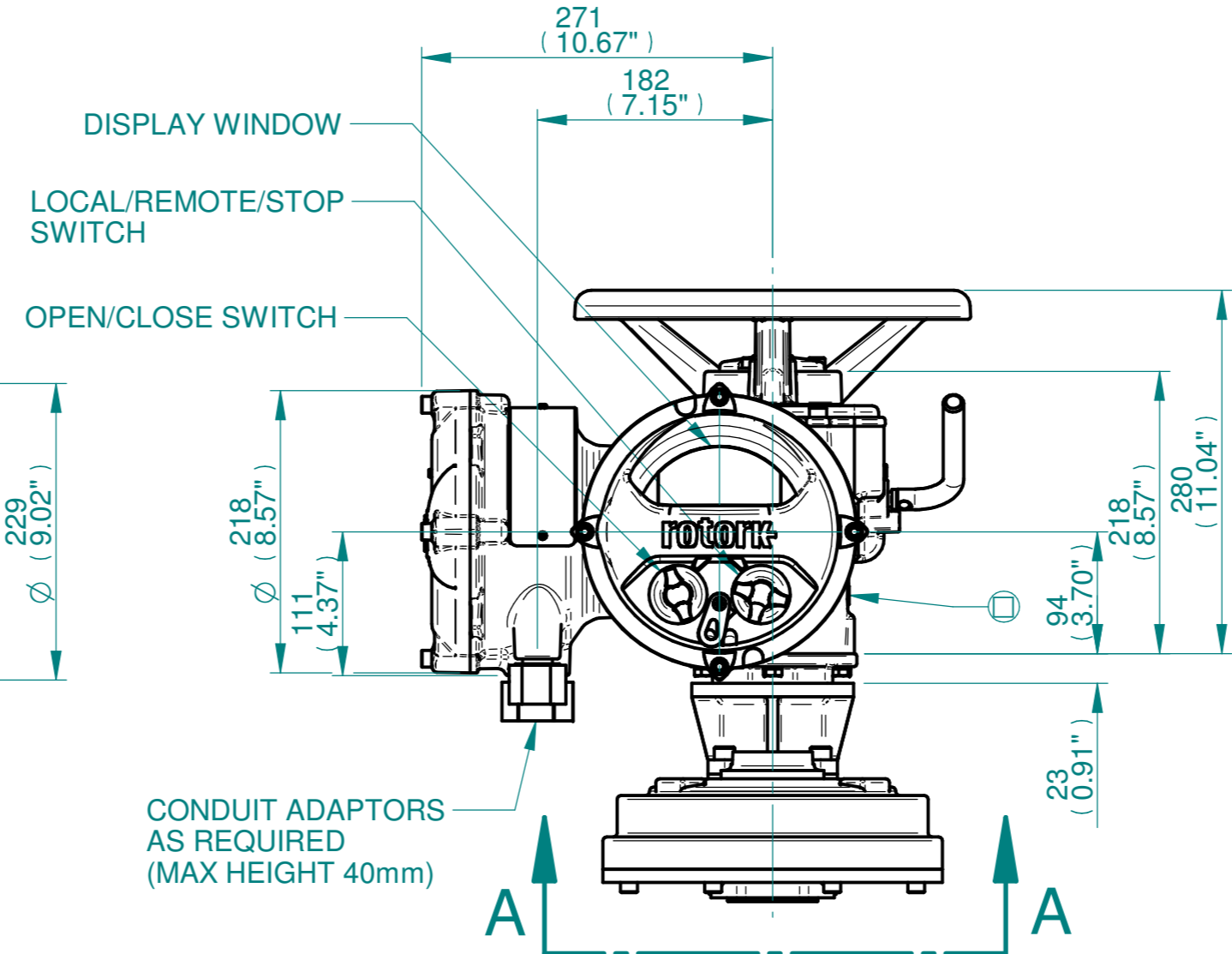
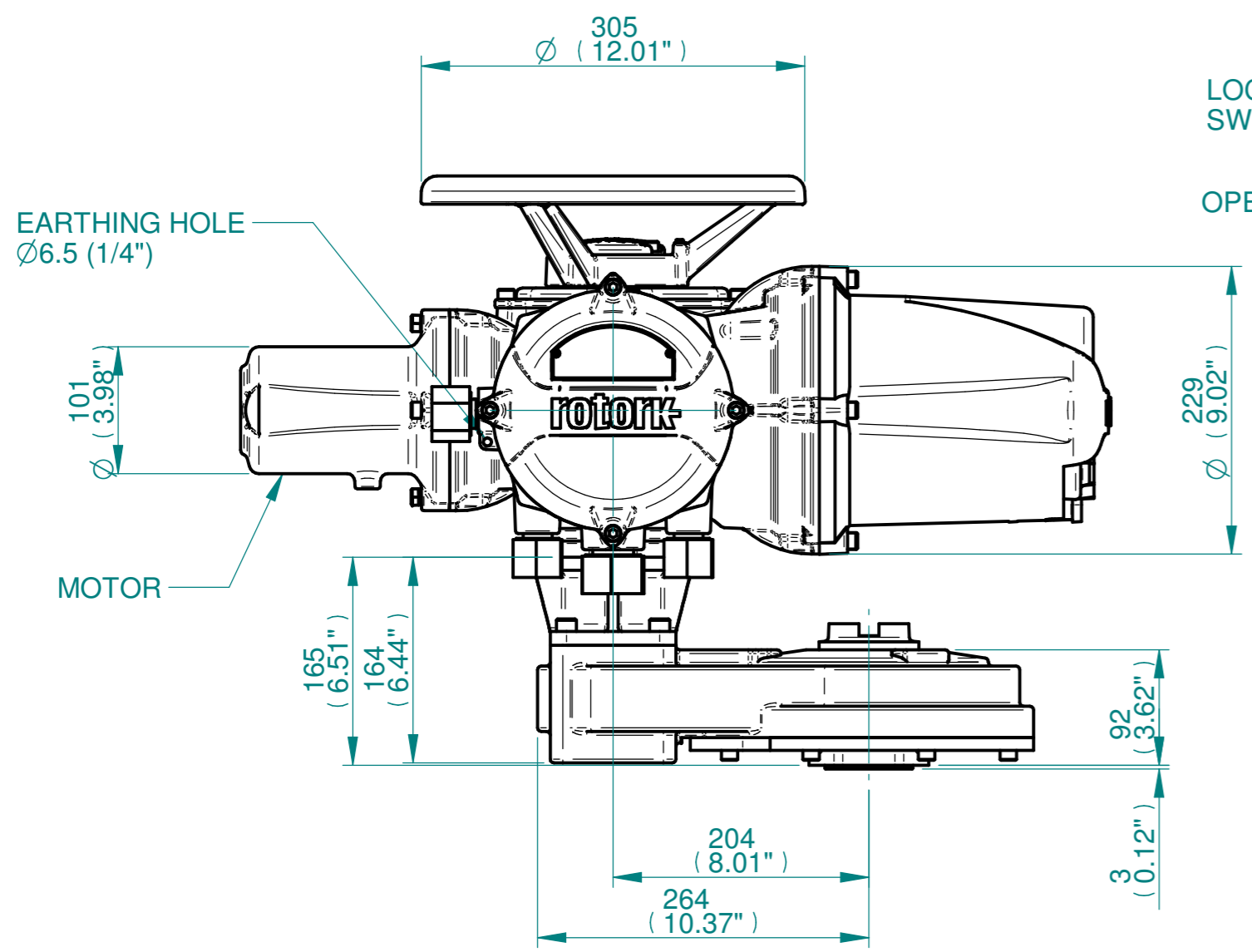
ISOMETRIC VIEW  
1:10

**NOTES:**  
 :DIMENSIONS WITH "\*" INDICATE COVER REMOVAL ALLOWANCE  
 :ELECTRONICS COVER OPTION "\*" WILL VARY DEPENDING ON CONFIGURATION  
 :NETT WEIGHT = 56kg/123lbs  
 : = OIL FILLER/DRAIN PLUG  
 :THE INTERFACE PROVIDED FOR MOUNTING THE ACTUATOR OR SECOND STAGE GEARBOX ONTO THE VALVE SHOULD CONFORM TO GOOD ENGINEERING PRACTICES, ENSURING ADEQUATELY TOLERANCED LIMITS FOR PARALLELISM, PERPENDICULARITY AND CONCENTRICITY.  
 :ROTORK CANNOT BE HELD LIABLE FOR DAMAGE TO OUR EQUIPMENT CAUSED BY EXCESSIVE LOADING FROM COVER TUBES. (SEE ALSO PUB000-124)

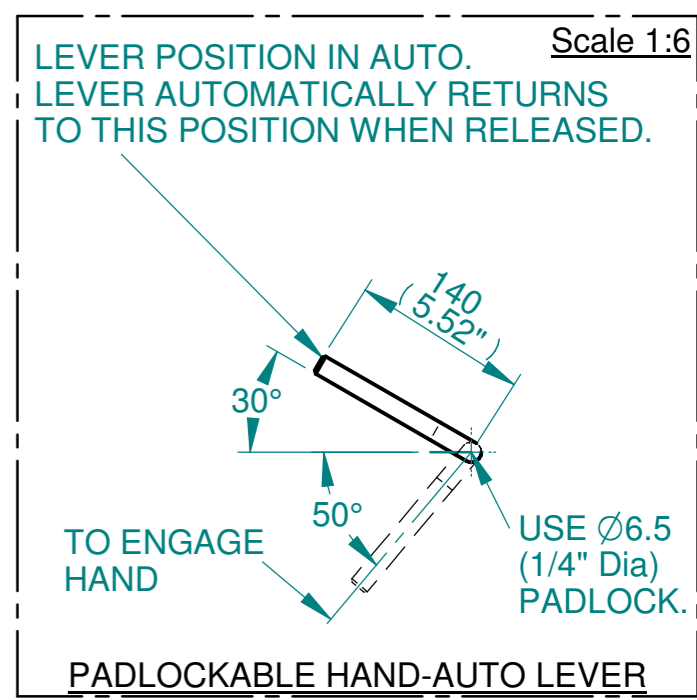
**CONDUIT ENTRIES**



	Hole 1	Hole 2	Hole 3	Hole 4
Size	As Required	As Required	As Required	As Required
Plugged	As Required	As Required	As Required	As Required
Gland	As Required	As Required	As Required	As Required



VIEW A-A



Actuator Size: IQ10/12/18, IS4		Gearbox output flange options								Maximum Bore & Key			
Title IQ10/12/18, TOP HANDWHEEL, IS4, F10, FA10, Ratios 2:1,3:1,4:1 & 6:1 Installation Details Drawn DH Checked JBA Date DEC 18 Ref SALES Project Ref QUOTATION	Designation	F10	-	-	-	-	FA10	-	-	-	Key form	Ø Bore	Key size
	No. Holes	4	-	-	-	-	4	-	-	-	Rectangle (BS4235)	40	12 X 8
	Hole size	M10	-	-	-	-	3/8" UNC	-	-	-	-	-	-
	PCD	102	-	-	-	-	4"	-	-	-	-	-	-

3D Models are available in various formats under the same drawing number

Issue	Description
1	FIRST ISSUE

Scale: 1:5 THIRD ANGLE PROJECTION

Drawing Number	Issue No	Sheet No
I11THWIS4STD	1	1 of 1

1 2 3 4 5 6 7 8 9 10 11 12