
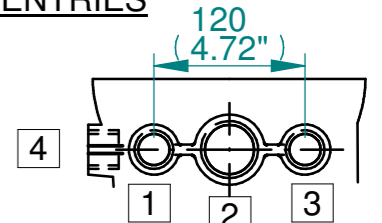
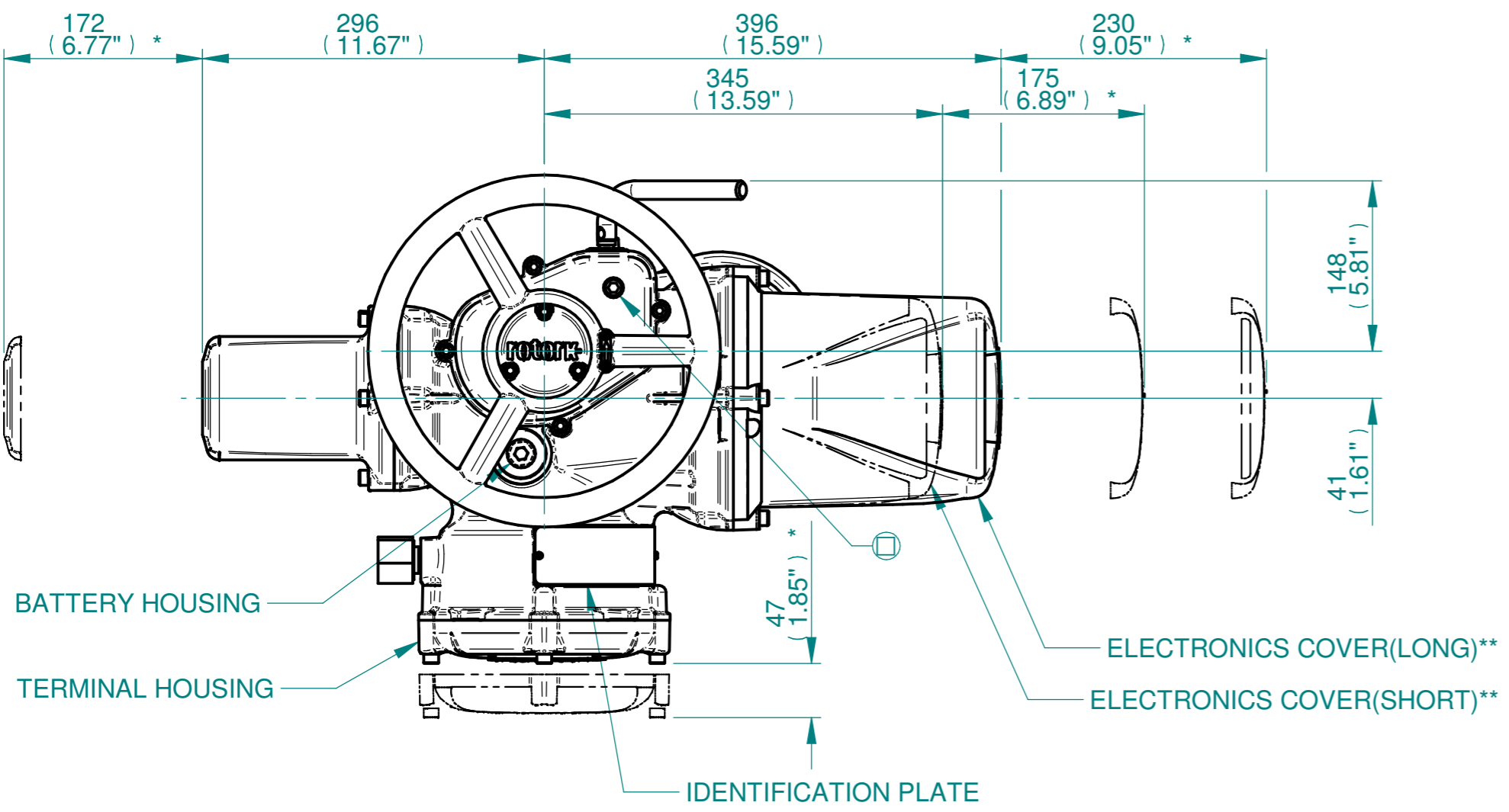


**NOTES:**  
 :DIMENSIONS WITH "\*" INDICATE COVER REMOVAL ALLOWANCE  
 :ELECTRONICS COVER OPTION "\*" WILL VARY DEPENDING ON CONFIGURATION  
 :NETT WEIGHT = 50kg/110lbs  
 :  = OIL FILLER/DRAIN PLUG  
 :THE INTERFACE PROVIDED FOR MOUNTING THE ACTUATOR OR SECOND STAGE GEARBOX ONTO THE VALVE SHOULD CONFORM TO GOOD ENGINEERING PRACTICES, ENSURING ADEQUATELY TOLERANCED LIMITS FOR PARALLELISM, PERPENDICULARITY AND CONCENTRICITY.  
 :ROTORK CANNOT BE HELD LIABLE FOR DAMAGE TO OUR EQUIPMENT CAUSED BY EXCESSIVE LOADING FROM COVER TUBES. (SEE ALSO PUB000-124)

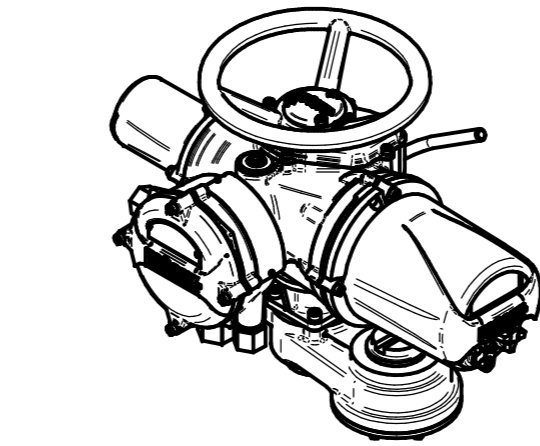
**CONDUIT ENTRIES**



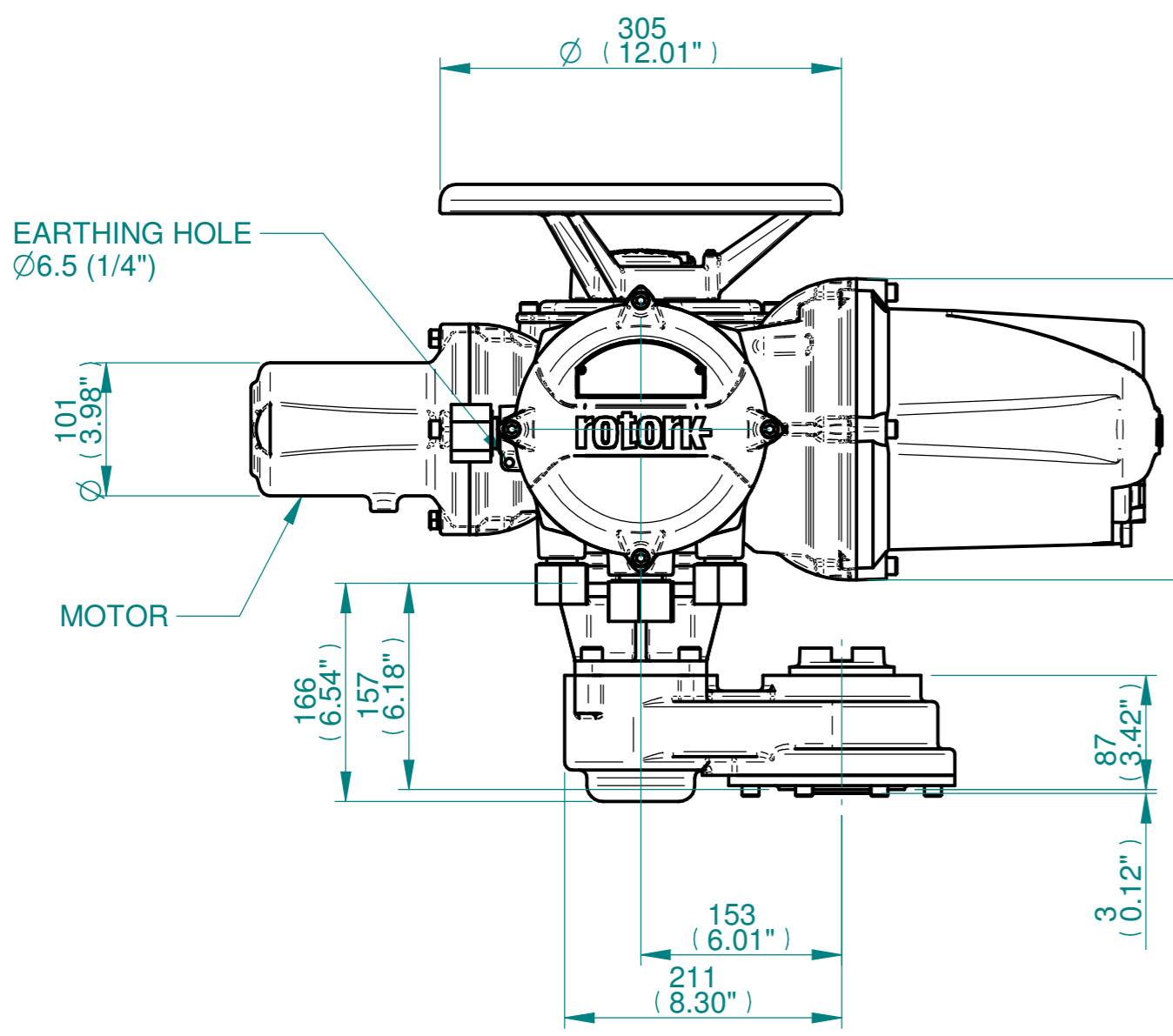
	Hole 1	Hole 2	Hole 3	Hole 4
Size	As Required	As Required	As Required	As Required
Plugged	As Required	As Required	As Required	As Required
Gland	As Required	As Required	As Required	As Required



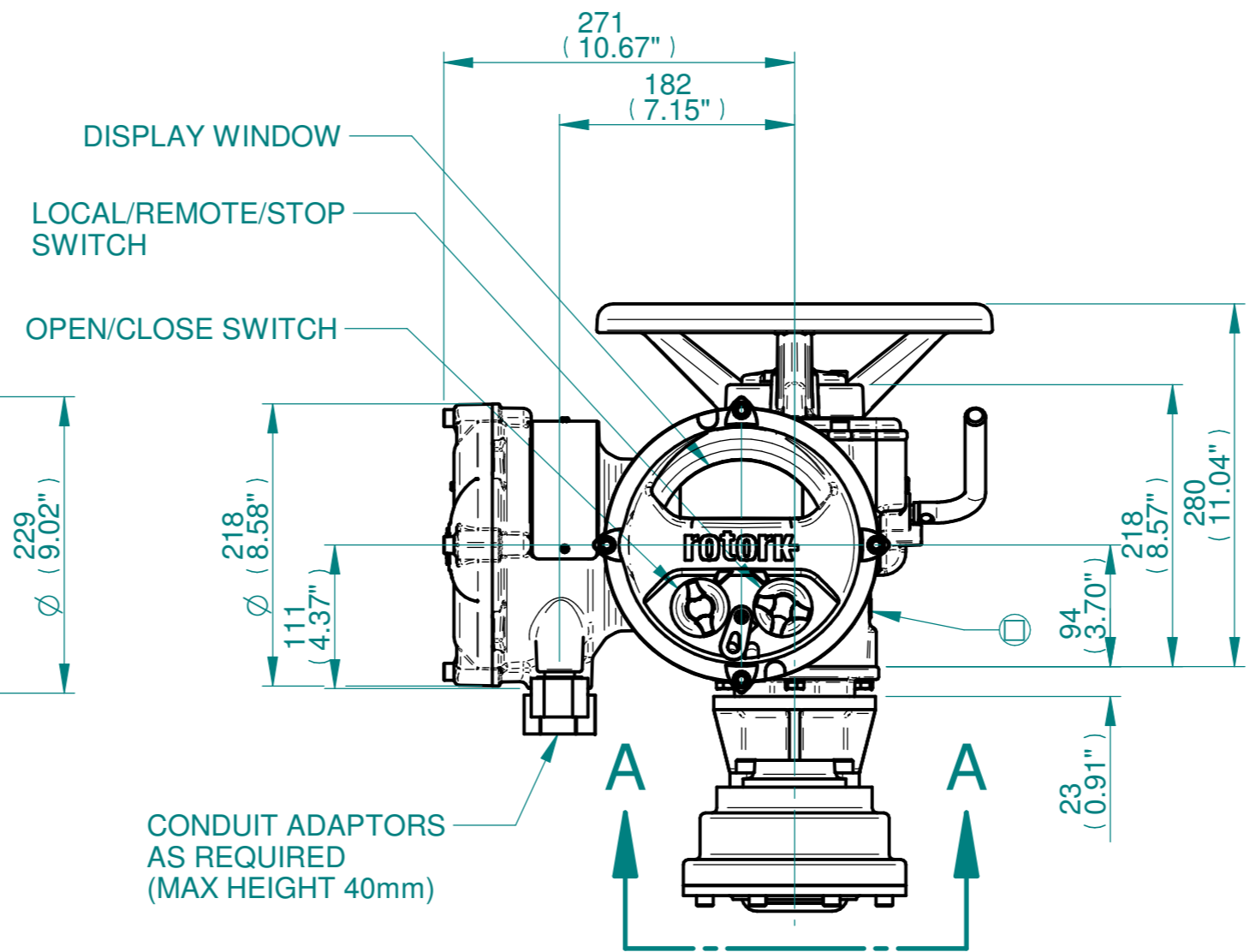
BATTERY HOUSING  
 TERMINAL HOUSING  
 IDENTIFICATION PLATE  
 ELECTRONICS COVER(LONG)\*\*  
 ELECTRONICS COVER(SHORT)\*\*



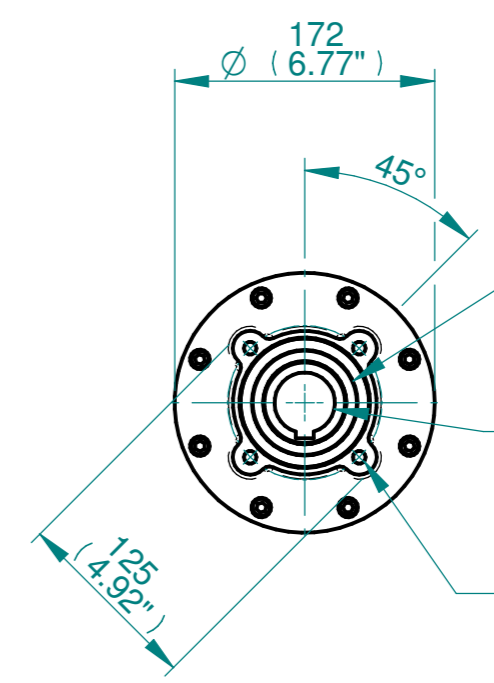
**ISOMETRIC VIEW  
1:10**



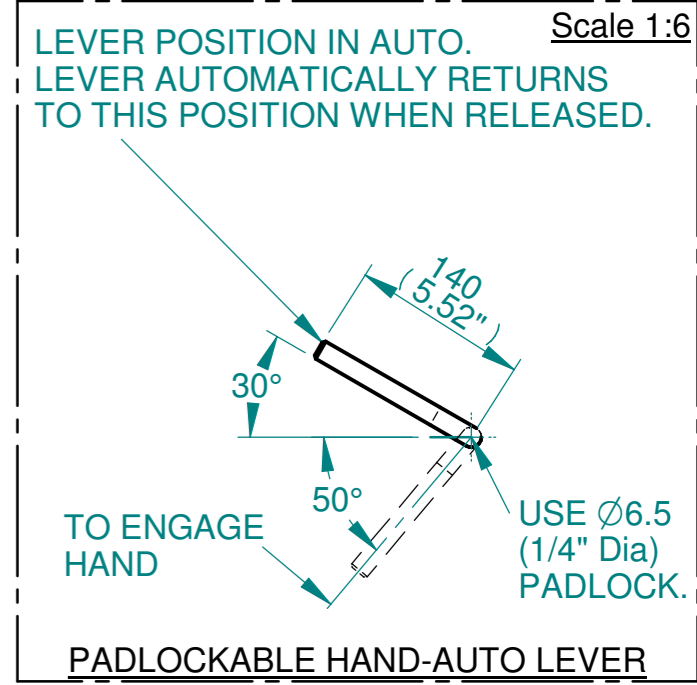
EARTHING HOLE  
Ø6.5 (1/4")  
 MOTOR



DISPLAY WINDOW  
 LOCAL/REMOTE/STOP SWITCH  
 OPEN/CLOSE SWITCH  
 CONDUIT ADAPTORS AS REQUIRED (MAX HEIGHT 40mm)



**VIEW A-A**



Ø69.95/69.90  
 Ø2.754"/ 2.752"  
 SEE MAXIMUM BORE & KEY TABLE  
 SEE GEARBOX OUTPUT FLANGE OPTIONS TABLE

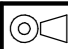
3D Models are available in various formats under the same drawing number



Rotork Controls Limited  
 Bath, BA1 3JQ, England.  
 Telephone 01225-733200

Actuator Size: IQ10/12/18, IS2		Gearbox output flange options								Maximum Bore & Key			
Title	IQ10/12/18, TOP HANDWHEEL, IS2, F10, FA10, Ratios 1:1, 2:1 & 3:1 Installation Details	Designation	F10	-	-	-	FA10	-	-	-	Key form	Ø Bore	Key size
Drawn	DH	Checked	JBA	Date	NOV 18	No. Holes	4	-	-	-	Rectangle (BS4235)	40	12 X 8
Hole size	M10	Hole size	3/8" UNC	PCD	102	Hole size	4"	-	-	-	-	-	-
Ref	SALES	Project Ref	QUOTATION										

Issue	Description
1	FIRST ISSUE

Scale: 1:5  THIRD ANGLE PROJECTION

Drawing Number	Issue No	Sheet No
I11THWIS2STD	1	1 of 1