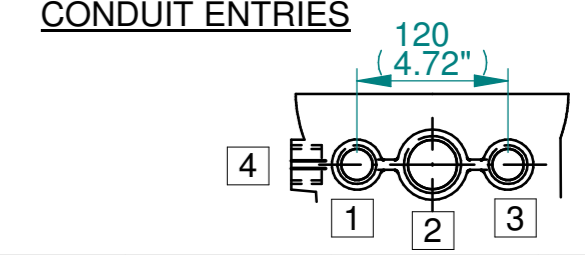
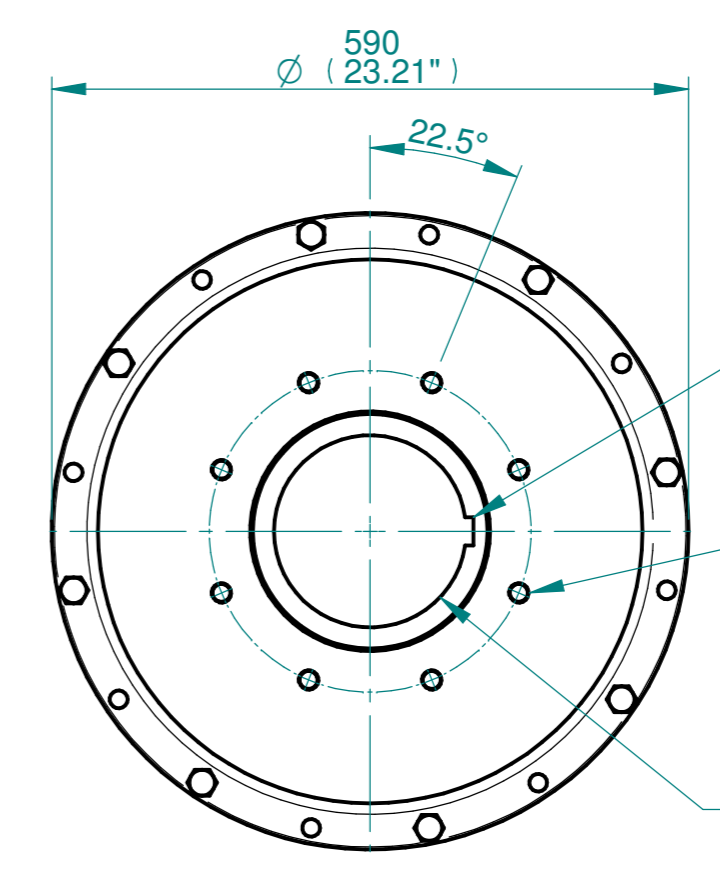
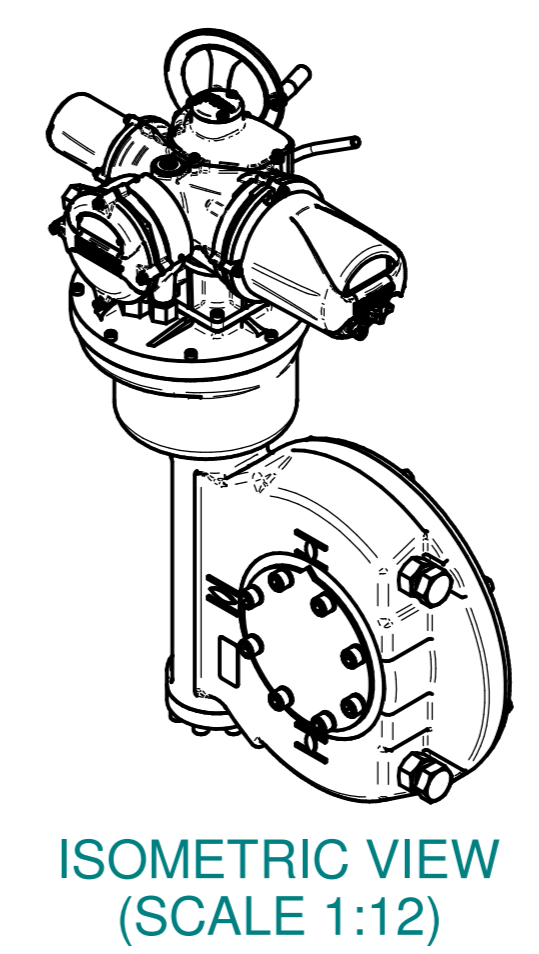
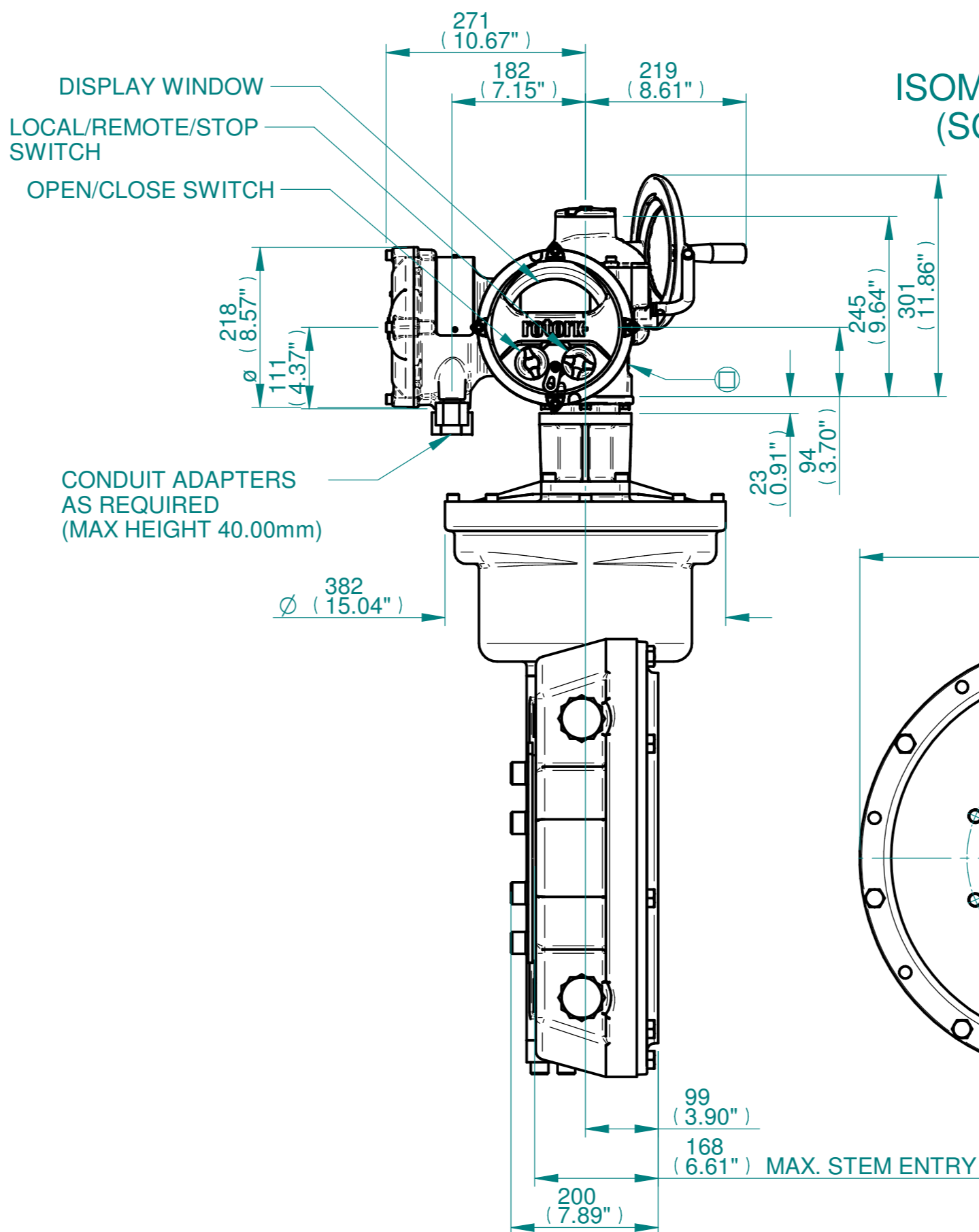
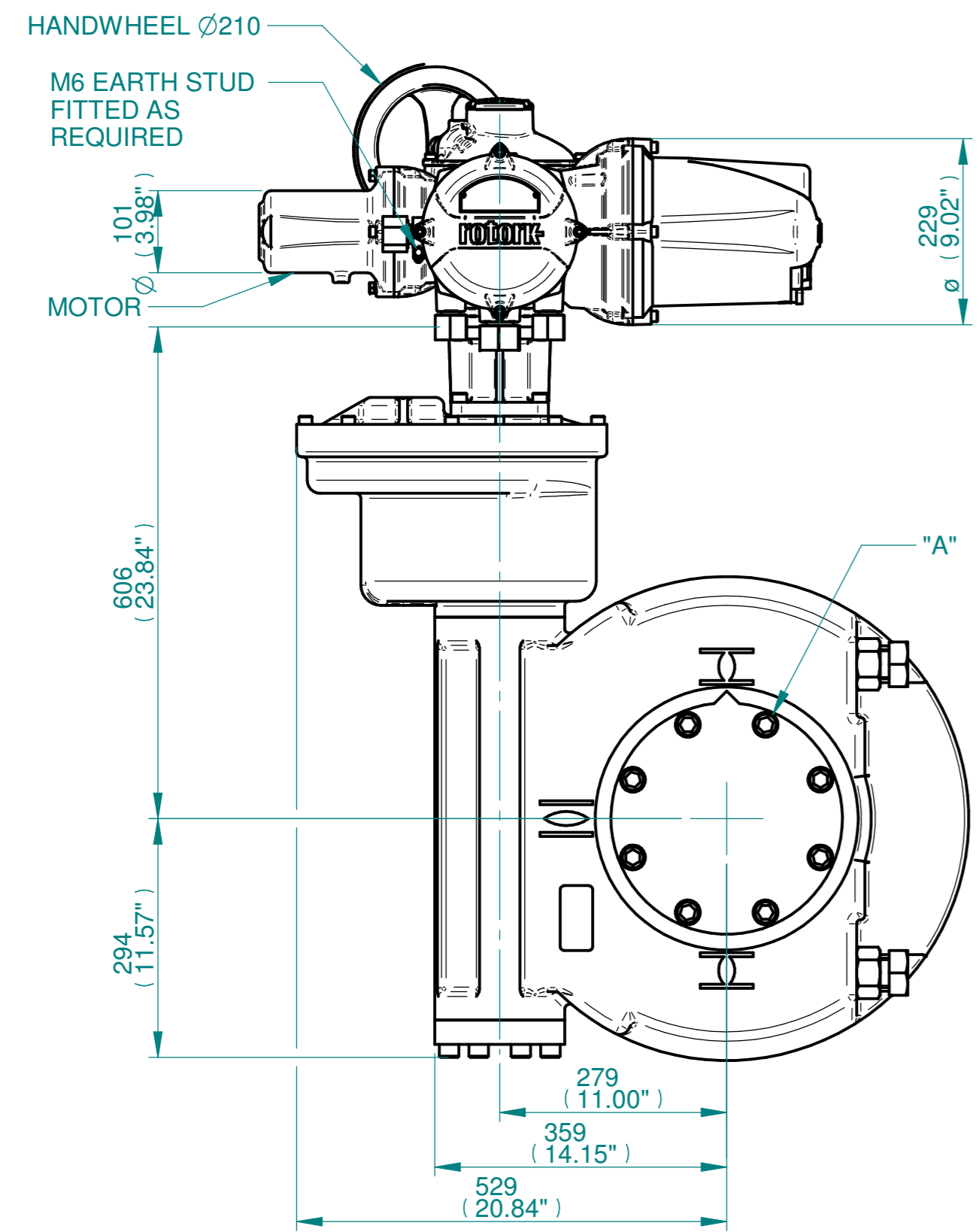
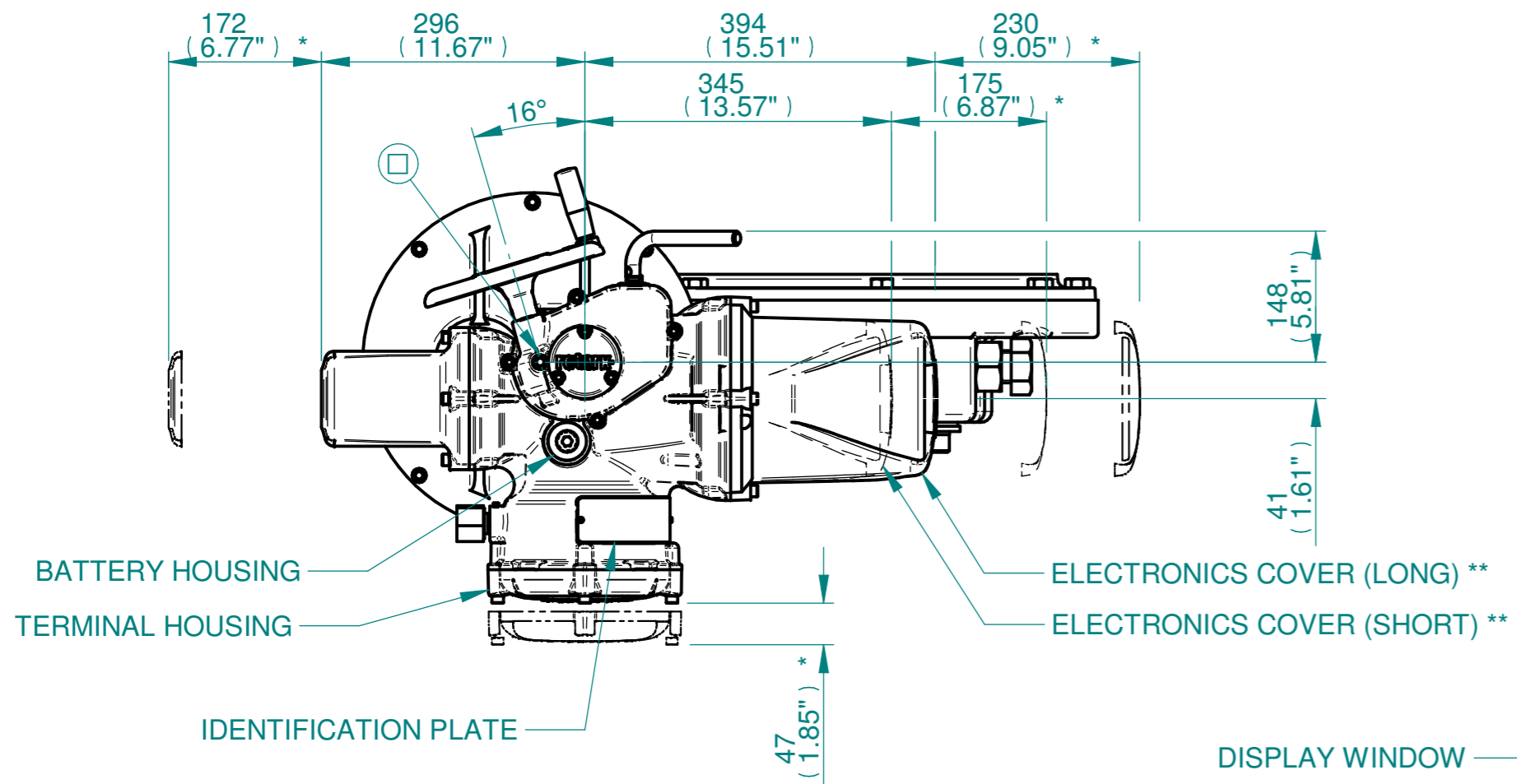
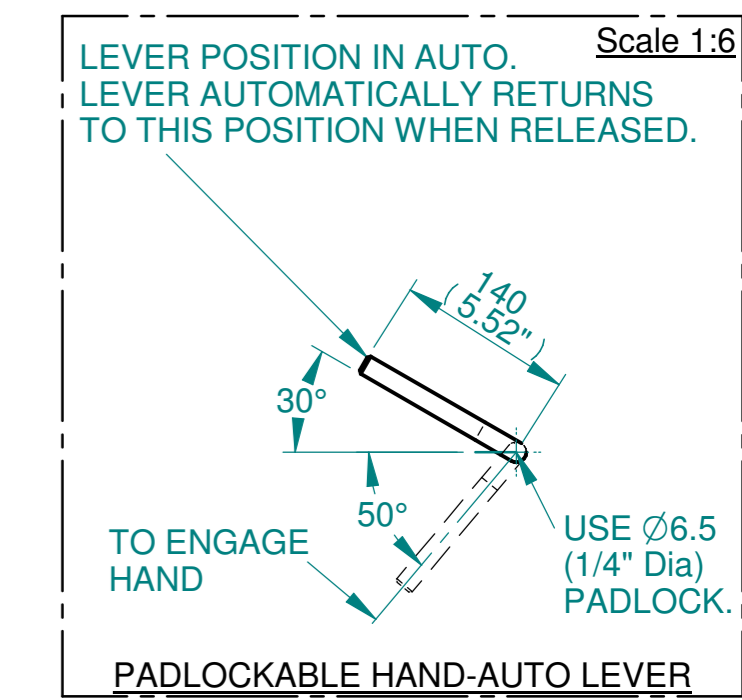


H  
G  
F  
E  
D  
C  
B  
A



	Hole 1	Hole 2	Hole 3	Hole 4
Size	As Required	As Required	As Required	As Required
Plugged	As Required	As Required	As Required	As Required
Gland	As Required	As Required	As Required	As Required



N.B. KEYWAY POS. CAN BE MOVED IN 45° STEPS BY REMOVING 8 SCREWS MARKED "A" AND ROTATING OUTPUT SLEEVE  
SEE GEARBOX OUTPUT FLANGE OPTIONS TABLE  
SEE MAXIMUM BORE & KEY TABLE

3D Models are available in various formats under the same drawing number

**rotork**  
www.rotork.com  
Rotork Controls Limited  
Bath, BA1 3JQ, England.  
Telephone 01225-733200

Actuator Size: IQ10/12/18 IW9,96RH/MOW9RH

Title IQ10/12/18, SIDE HANDWHEEL, IW9RH / IW96RH / MOW9RH, F/FA30, 35,40, Ratios 960 - 3000:1 Installation Details

Drawn TED Checked NJC Date 18-AUG-14

Ref SALES Project Ref QUOTATION

Designation	Gearbox output flange options								Maximum Bore & Key		
	F30	F35	F40	-	FA30	FA35	FA40	-	Key form	Ø Bore	Key size
No. Holes	8	8	8	-	8	8	8	-	Rectangle (BS4235)	178	45 X 25
Hole size	M20	M30	M36	-	3/4" UNC	1" UNC	1-1/4" UNC	-	Rectangle (ANSI B17.1)	6-1/2"	1-1/2" X 1"
PCD	298	356	406	-	11.75"	14"	16"	-	Square (ANSI B17.1)	6-1/2"	1-1/2" SQ

Issue	Description
3	OUTPUT FLANGE CHANGE

Scale: 1:7

THIRD ANGLE PROJECTION

Drawing Number	Issue No	Sheet No
111SHWIW9RHSTD	3	1 of 1

1 2 3 4 5 6 7 8 9 10 11 12