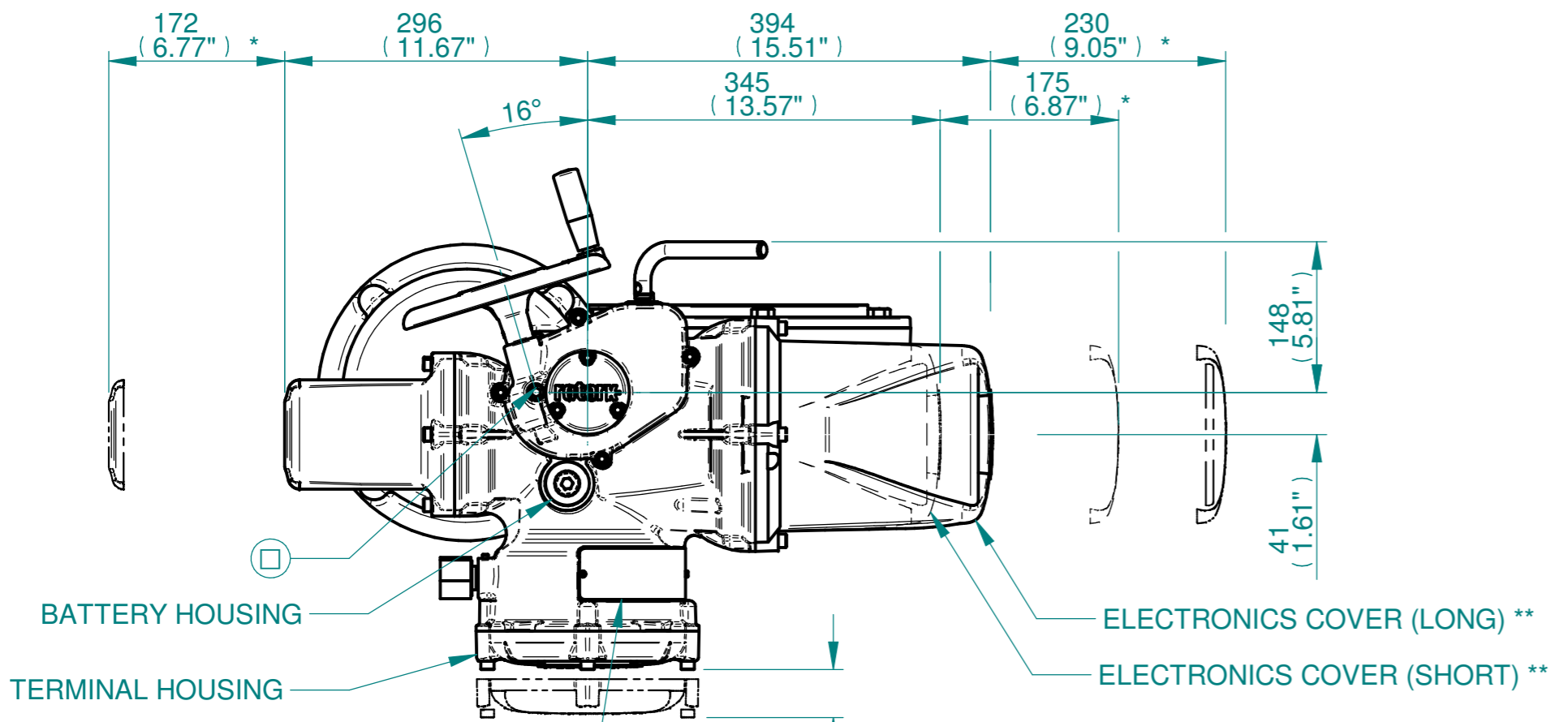
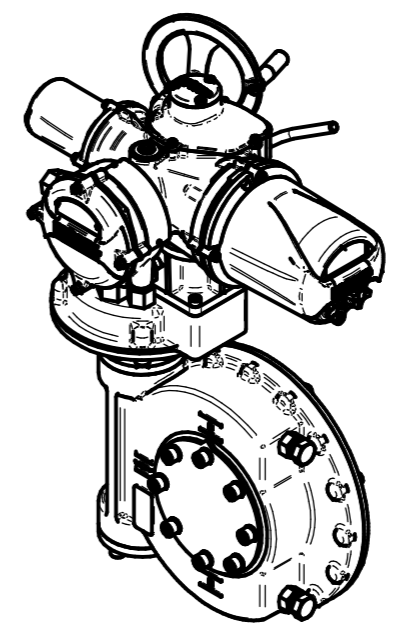


H  
G  
F  
E  
D  
C  
B  
A



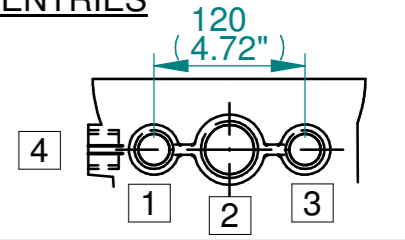
BATTERY HOUSING  
TERMINAL HOUSING  
ELECTRONICS COVER (LONG) \*\*  
ELECTRONICS COVER (SHORT) \*\*



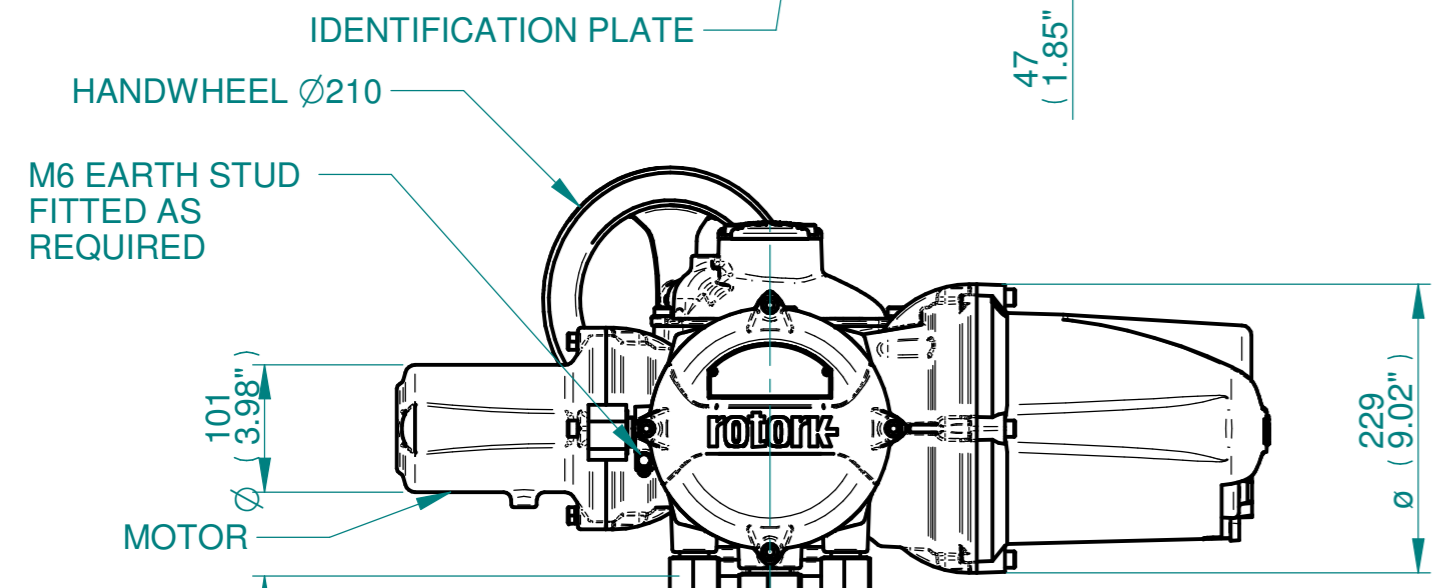
ISOMETRIC VIEW (SCALE 1:12)

**NOTES:**  
 :DIMENSIONS WITH "\*" INDICATE COVER REMOVAL ALLOWANCE  
 :ELECTRONICS COVER OPTION "\*\*\*\*" WILL VARY DEPENDING ON CONFIGURATION  
 :NETT WEIGHT = 175kg/386lbs  
 : = OIL FILLER/DRAIN PLUG  
 :THE INTERFACE PROVIDED FOR MOUNTING THE ACTUATOR OR SECOND STAGE GEARBOX ONTO THE VALVE SHOULD CONFORM TO GOOD ENGINEERING PRACTICES, ENSURING ADEQUATELY TOLERANCED LIMITS FOR PARALLELISM, PERPENDICULARITY AND CONCENTRICITY.  
 :ROTORK CANNOT BE HELD LIABLE FOR DAMAGE TO OUR EQUIPMENT CAUSED BY EXCESSIVE LOADING FROM COVER TUBES. (SEE ALSO PUB000-124)

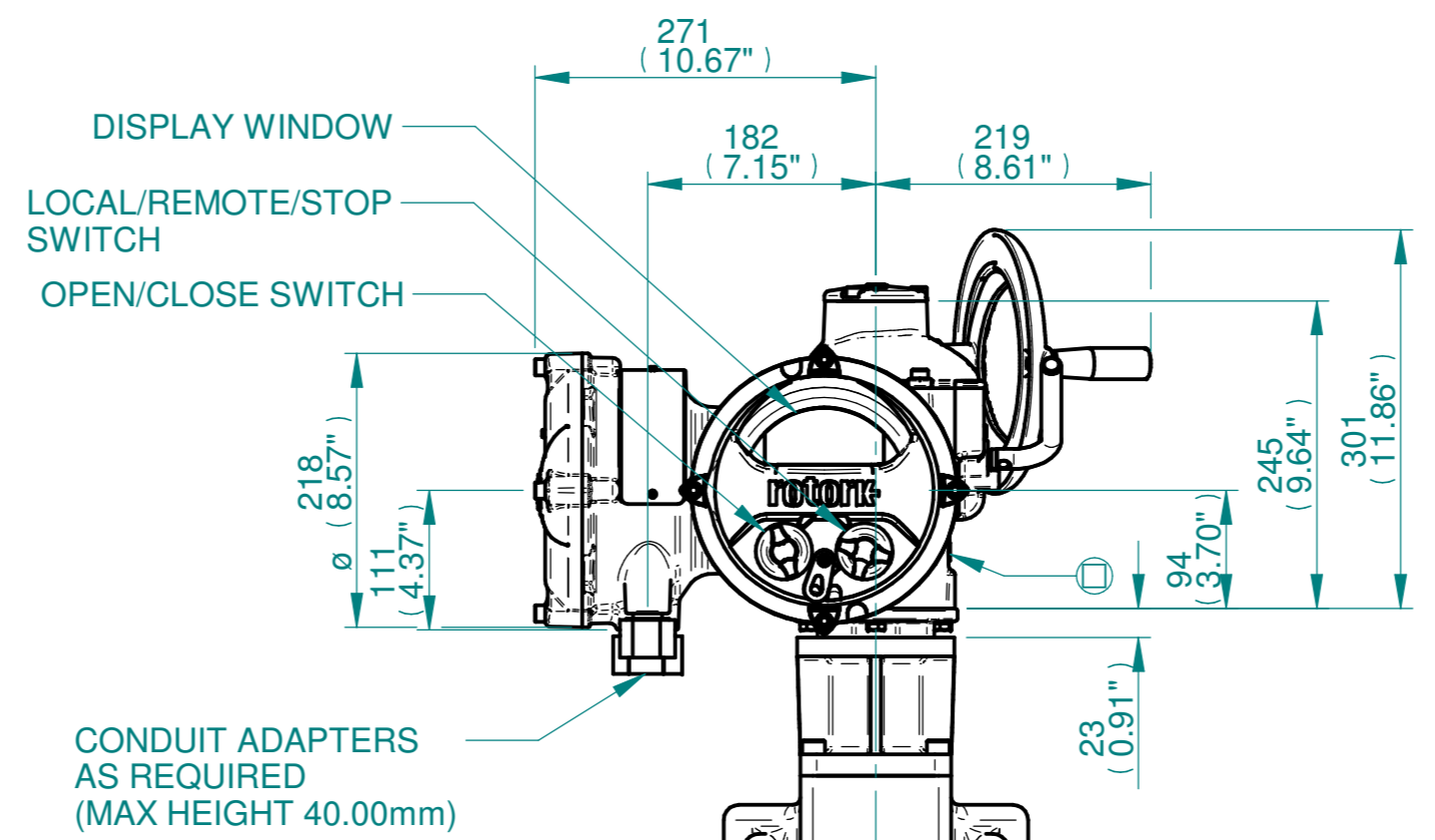
CONDUIT ENTRIES



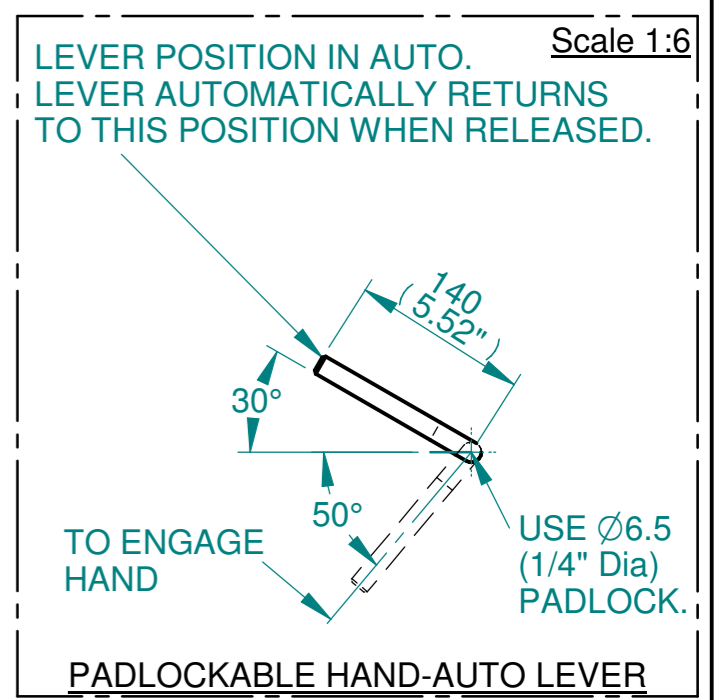
	Hole 1	Hole 2	Hole 3	Hole 4
Size	As Required	As Required	As Required	As Required
Plugged	As Required	As Required	As Required	As Required
Gland	As Required	As Required	As Required	As Required



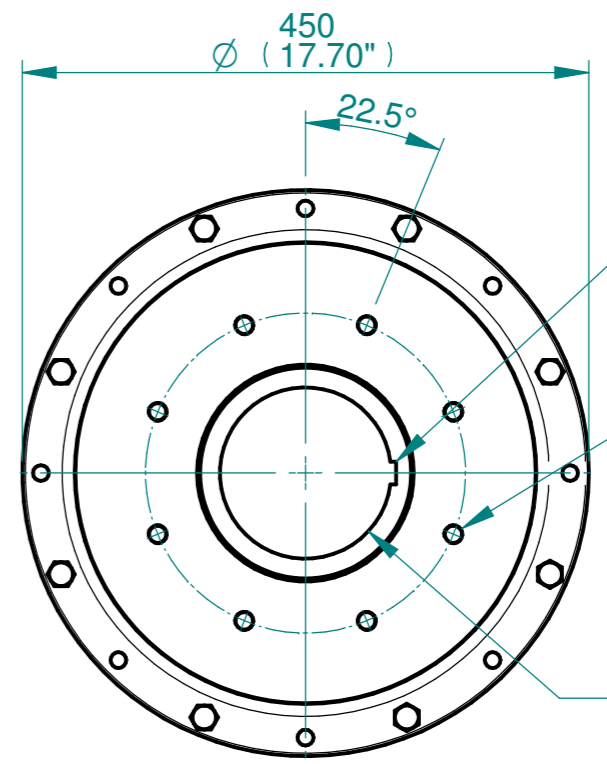
IDENTIFICATION PLATE  
HANDWHEEL Ø210  
M6 EARTH STUD FITTED AS REQUIRED  
MOTOR



DISPLAY WINDOW  
LOCAL/REMOTE/STOP SWITCH  
OPEN/CLOSE SWITCH  
CONDUIT ADAPTERS AS REQUIRED (MAX HEIGHT 40.00mm)



LEVER POSITION IN AUTO. LEVER AUTOMATICALLY RETURNS TO THIS POSITION WHEN RELEASED.  
 Scale 1:6  
 TO ENGAGE HAND  
 USE Ø6.5 (1/4" Dia) PADLOCK.  
 PADLOCKABLE HAND-AUTO LEVER



N.B. KEYWAY POS. CAN BE MOVED IN 45° STEPS BY REMOVING 8 SCREWS MARKED "A" AND ROTATING OUTPUT SLEEVE  
 SEE GEARBOX OUTPUT FLANGE OPTIONS TABLE  
 SEE MAXIMUM BORE & KEY TABLE

3D Models are available in various formats under the same drawing number

Actuator Size: IQ10/12/18 IW7,72 & 76RL/MOW7RL		Gearbox output flange options								Maximum Bore & Key		
Title IQ10/12/18, SIDE HANDWHEEL, IW7RL / IW72RL / IW76RL / MOW7RL, F/FA25 & 30, Ratios 120 - 384:1 Installation Details Drawn TED Checked NJC Date 18-AUG-14 Ref SALES Project Ref QUOTATION	Designation	F25	F30	-	-	FA25	FA30	-	-	Key form	Ø Bore	Key size
	No. Holes	8	8	-	-	8	8	-	-	Rectangle (BS4235)	136	36 X 20
	Hole size	M16	M20	-	-	5/8" UNC	3/4" UNC	-	-	Rectangle (ANSI B17.1)	5-1/4"	1-1/4 X 7/8"
	PCD	254	298	-	-	10"	11-3/4"	-	-	Square (ANSI B17.1)	4-7/8"	1-1/4" SQ

Issue	Description
3	OUTPUT FLANGE CHANGE

Scale: 1:6 THIRD ANGLE PROJECTION

Drawing Number	Issue No	Sheet No
II1SHWIW7RLSTD	3	1 of 1

**rotork**  
www.rotork.com  
Rotork Controls Limited  
Bath, BA1 3JQ, England.  
Telephone 01225-733200

1 2 3 4 5 6 7 8 9 10 11 12