

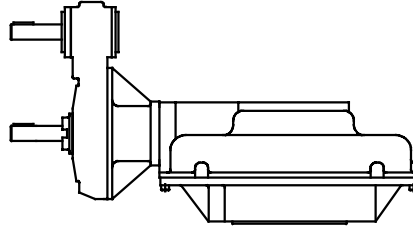
SPECIFICATION AND OPTIONS FOR ROTORK GEARS BEVEL GEAR OPERATORS

Specification:

- Output torque range available up to 10850Nm (manual) and 8150Nm (motorised).
- Thrust range available up to 1557kN.
- Valve spindle acceptances up to Ø120mm (bored and keywayed) and Ø150mm (threaded).
- Basic gear ratios from 1:1 to 8:1.
- Compatible with auxiliary spur gear attachment AS type giving total ratios up to 120:1.

Options:

- Auxiliary spurs may be fitted with `twin input' shafts to give high and low speed operation.



IB/AS Combination Bevel/Auxiliary Spur Gearbox

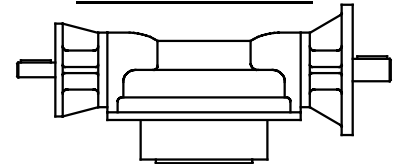
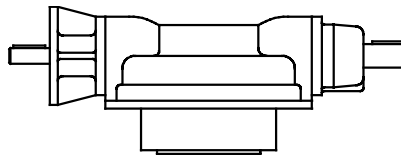
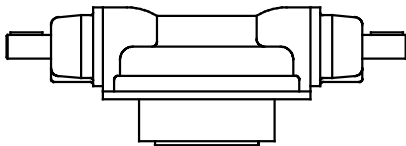
-Form B non thrust taking units are available.

- Through input shafts are available for operation of secondary gearboxes on twin spindle applications. Input options include:-

Manual both ends

Motorised / Manual

Motorised both ends



- Valve spindle cover tubes are available in steel and clear polycarbonate.

- Valve position indication is available via several types of gearbox mounted indicator including:-

Rising indicators

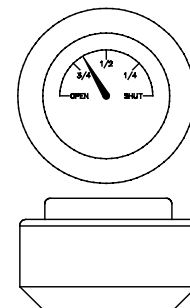
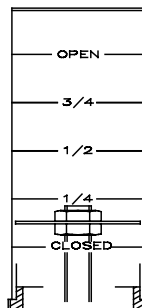
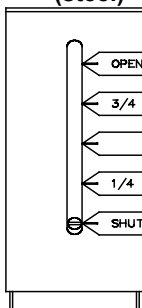
Rising indicators

Dial type indicators

For rising and non-rising stems
(steel)

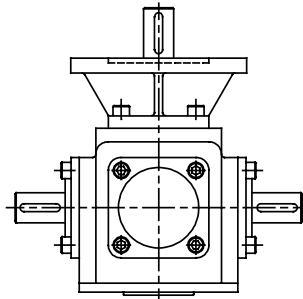
(polycarbonate)

for rising and non-rising stems



- Steel indicators are available with limit switches for end of travel indication.

- Middle gearboxes MB type are available with two or three shafts to drive further gearboxes at various angles.



Other options available:

- Standard rotation is clockwise output for clockwise input. Anti-clockwise output for clockwise input is available.
- Buried duty, Submersible duty, Marine duty, Raw Sewage duty, Nuclear duty, High and low Temperature duty.
- Lockable hand wheels and flanges, Temperature and Thrust Compensators

Standard rising spindle cover tubes are available in 200mm increments (100mm increments up to 1 metre long). Alternative lengths are available on request. Customer specific covers available include:-

- a) Aramco
- b) drilled / tapped holes in end plates
- c) NPT thread forms.