

# IB9A99

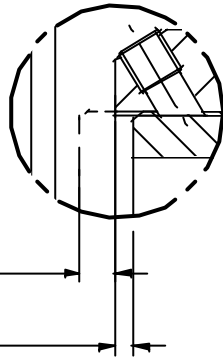
EXEE CO LTD © 2007

ISSUE	ALTERATIONS
A	ORIGINAL ISSUE

**NOTES:**

1. SPRING ARRANGEMENT: 5 SPRINGS ARRANGED AS SHOWN
2. ASSEMBLY PRELOAD: 342752N / 34,951 KG / 76,892 LBS
3. ASSEMBLY DRAWN WITHOUT PRELOAD APPLIED
4. USE ONLY MUBECA DISC SPRINGS
5. GEARBOX MOUNTING F25
6. VALVE MOUNTING F25 (ALTERNATIVE MOUNTINGS AVAILABLE ON REQUEST)

**DETAIL B**

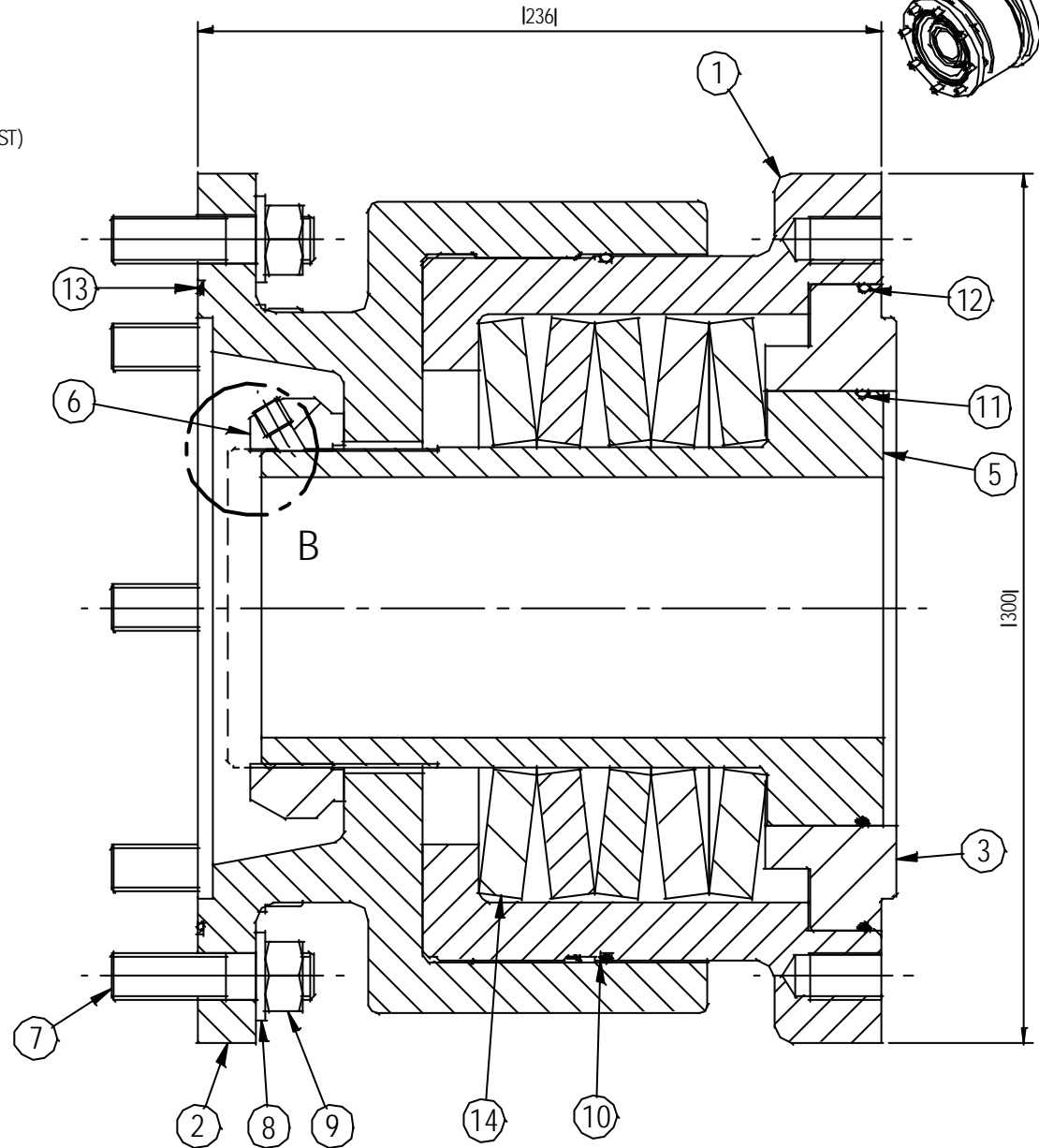


SPRING COMPRESSION 11.6MM  
WHEN PRELOAD APPLIED

THIS DISTANCE APPROX 7.6 MM  
AFTER PRELOAD

THIS DISTANCE APPROX 4.0 MM  
BEFORE PRELOAD

THIRD ANGLE PROJECTION  
DO NOT SCALE



Item	Part No	Description	Qty
1	IB9D50	INNER CASING	1
2	IB9D51	OUTER CASING	1
3	IB9A100	SPIGOT RING	1
5	IB9C64	SLEEVE	1
6	KMT22	LOCK NUT	1
7	T1C1/101	STUD	8
8	WM16ZP	WASHER	8
9	NM16ZP	HEX NUT	8
10	2295-30V	O-RING	1
11	1445-30V	O-RING	1
12	2095-30V	O-RING	1
13	2195-30V	O-RING	1
14	200X112X16	DISC SPRING	5

**ROTORK GEARS**

REG NA HOUSE  
RING ROAD  
BRAMLEY  
LEEDS  
WEST YORKSHIRE

MATERIAL:- SEE TABLE

PROJECT:- TEMPERATURE COMPENSATING UNIT. IB10 REF: A0524804

DRAWN:- MMK 02/04/2007

CHECKED:- GP 24/04/2007

SCALE

1:2.5 (A4)

HEAT TREATMENT

PROTECTIVE TREATMENT

SUITABLY PROTECT FOR STORAGE

**GENERAL ASSEMBLY**

**IB9A99**