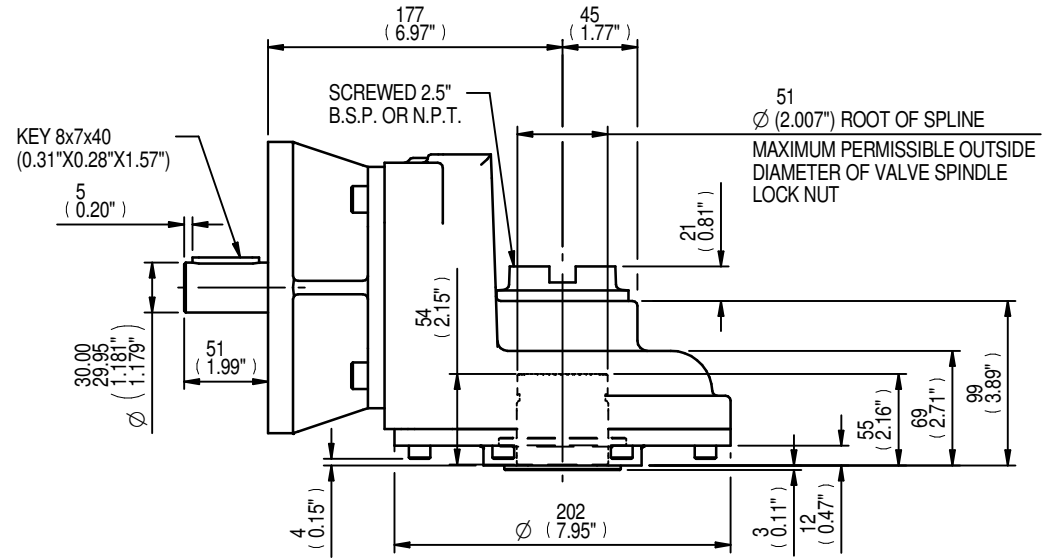
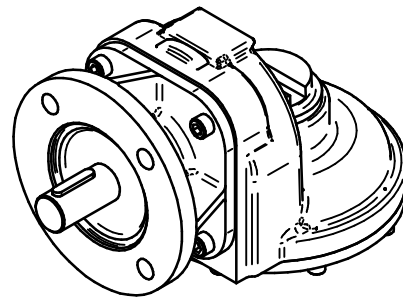
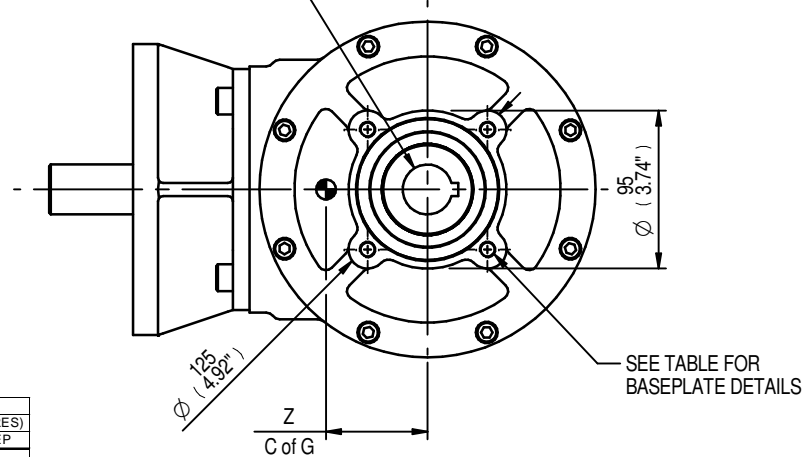


SEE TABLE FOR SPIGOT DIA.

MOUNTING HOLES CAN BE POSITIONED ON CTRS BY REMOVING 8 BOLTS INDICATED AND REPOSITIONING



SEE TABLE FOR BORE & KEY DETAILS



RATIO	M.A.	C.O.G.			MAX OUTPUT TORQUE Nm (lbs.ft)
		X	Y	Z	
1	0.85	0	30	61	306 (225)

MAX BORE SQ KEY			MAX BORE RECTANGULAR KEY			MAX STEM SCREW ACCEPTANCE DIA
STD	BORE	KEY	STD	BORE	KEY	
BS4235	-	-	BS4235	40	12 x 8	45 (1.75")
BS46	1.500"	3/8" SQ	BS46	1.625"	7/16" x 5/16"	
ANSI B17.1	1.500"	3/8" SQ	ANSI B17.1	1.625"	3/8" x 1/4"	

	INPUT FLANGE DETAILS					KEY
	FLANGE	SHAFT	RECESS	RECESS	HOLE DETAILS	
	O/DIA. & THICKNESS	DIA.	DIA.	DEPTH	45°(OFF CENTRES)	
ISO F14	Ø175 x 15 (Ø6.89" x 0.59")	Ø30.00-0.05 (Ø1.181"-0.002")	Ø100.05+0.05 (Ø3.939"+0.002")	5 (0.20")	4 HOLES Ø16.5 (Ø0.65") ON Ø140.0 (Ø5.51") P.C.	8x7x40 (0.31"x0.28"x1.57")
	Ø175 x 15 (Ø6.89" x 0.59")	Ø30.00-0.05 (Ø1.181"-0.002")	Ø95.27+0.05 (Ø3.751"+0.002")	5 (0.20")	4 HOLES Ø16.5 (Ø0.65") ON Ø140.0 (Ø5.51") P.C.	8x7x40 (0.31"x0.28"x1.57")

	BASEPLATE DETAILS	
	SPIGOT DIA.	HOLE DETAILS (45° OFF CENTRES)
	O/DIA. & THICKNESS	4 HOLES M10 x 15 (0.59") DEEP
ISO F10	Ø69.95-0.05 (Ø2.754"-0.002")	ON Ø102.0 (Ø4.02") P.C.
FA10	Ø58.70-0.05 (Ø2.311"-0.002")	4 HOLES 3/8"UNC x 15 (0.59") DEEP ON Ø101.6 (Ø4.00") P.C.

**rotork
gears**

**IB2 GEARBOX
F14/FA14 INPUT F10/FA10 OUTPUT**

DETAILS SUBJECT TO CHANGE WITHOUT PRIOR NOTICE

FOR UP TO DATE DETAILS VISIT www.rotork.com

APPROX WEIGHT 19.3 kg

DRAWING No	PUBIB2-F14-F10	Regina House Ring Road Bramley Leeds LS134ET United Kingdom
ISSUE	A	
DATE	26/04/2011	