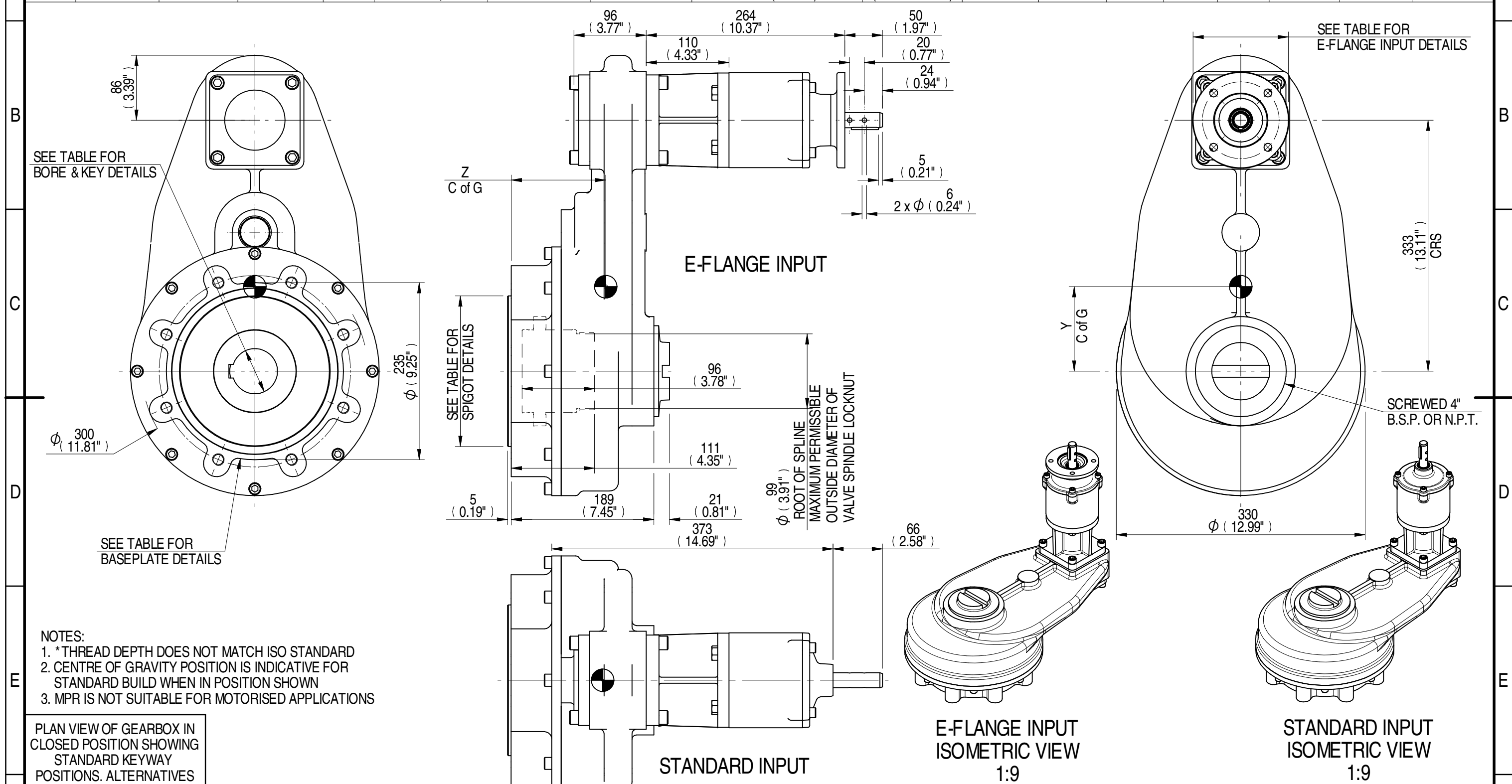


1	2				3		4			5		6				7		8	
INPUT FLANGE	FLANGE O/DIA. + THICKNESS	SHAFT DIA.	RECESS DIA.	RECESS DEPTH	HOLE DETAILS (45° OFF CENTRES)		KEY DETAILS	ISO 5211 / MSS SP-101 MOUNTING OPTION	HOLE DETAILS (22.5° OFF CENTRES)	SPIGOT DIAMETER	MAX SCREW STEM ACCEPTANCE	STANDARD	MIN BORE	SQ KEY MAX BORE	SQ KEY SIZE	RECT. KEY MAX BORE	RECT. KEY SIZE	SQ BORE MAX	
	Ø126x11 (Ø4.96"x0.41")	19.98-0.05 (0.787"-0.002")	Ø70.05+0.05 (Ø2.758"+0.002")	3 (0.12")	4 x Ø10.5 ON Ø102.0 P.C. (4 x Ø0.41" ON Ø4.02" P.C.)		6x6x40 (0.24"x0.24"x1.57")	F25	8 x M16 x 20 (0.79") DEEP ON Ø254.0 (Ø10.00") P.C.	Ø199.95-0.05 (Ø7.872"-0.002")	86 (3.386")	BS4235	-	-	-	76.0	22 x 14	□ 61.0 (2.402")	
							FA25	8 x 5/8" UNC x 20 (0.79") DEEP ON Ø254.4 (Ø10.00") P.C.	Ø152.25-0.05 (Ø5.994"-0.002")	ANSI B17.1		-	2.750"	3/4" SQ.	3.000"	3/4" x 1/2"			
										DIN 6885		-	-	-	-	-	-		



1	2	3	4	5	6	7	8	
25.5	19.50	84.13	2550	130	0	112	125	
RATIO	M.A.	WEIGHT	MAX OUTPUT	MAX INPUT	X	Y	Z	
DESCRIPTION			TORQUE		CENTRE OF GRAVITY			

AS PART OF CONTINUOUS PRODUCT DEVELOPMENT, ALL DETAILS SUBJECT TO CHANGE WITHOUT PRIOR NOTICE. FOR UP TO DATE DETAILS PLEASE VISIT www.rotork.com

rotork
Gears
LEEDS - UK
www.rotork.com

This drawing is confidential and is the property of Rotork Gears and must not be reproduced either wholly or partly. All rights in respect of patents, designs and copyrights are reserved. © 2015

Document Type	PUBLICITY	Mass	84.13 kg	Title	HOS9 6:1 MPR4 GEARBOX STANDARD/E-FLANGE INPUT REDUCER, F25/FA25 OUTPUT.	
Created	E CHANG	23/02/2015	Dimensions in mm	Drawing Number	PUB-HOS9MPR4-25.5-F25	
Checked	J DICKINSON	13/03/2015	Scale	1:5	Iss.	01
Approved				Sheet	1	of 1 Size A3