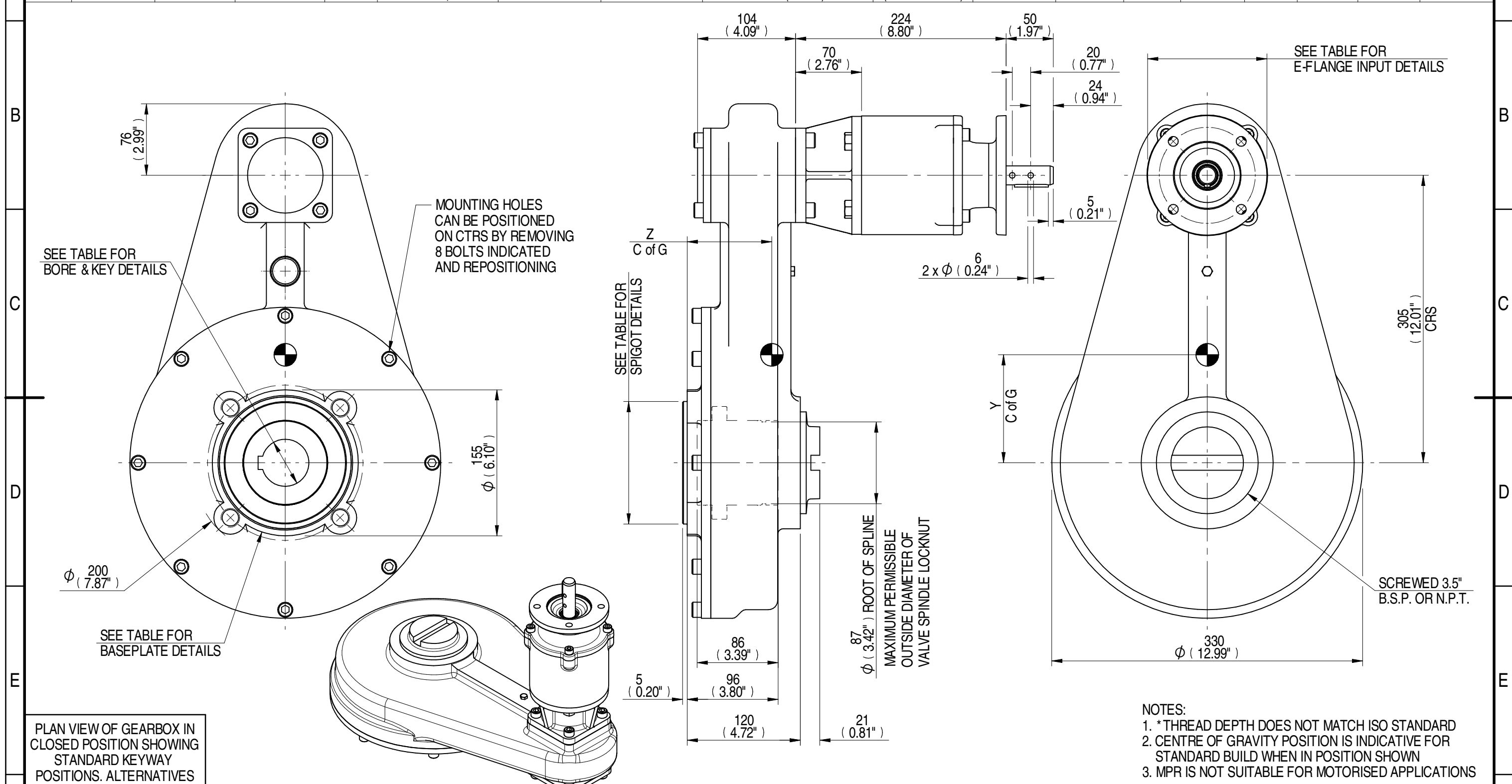


E-FLANGE INPUT DETAILS		MOUNTING HOLES - BOLT CIRCLE (OFF CENTRES)				STEM ACCEPTANCE IN ACCORDANCE TO STANDARD													
INPUT FLANGE	FLANGE O/DIA. + THICKNESS	SHAFT DIA.	RECESS DIA.	RECESS DEPTH	HOLE DETAILS (45° OFF CENTRES)	KEY DETAILS	ISO 5211 / MSS SP-101 MOUNTING OPTION	HOLE DETAILS (45° OFF CENTRES)	SPIGOT DIAMETER	MAX SCREW STEM ACCEPTANCE	STANDARD	MIN BORE	SQ KEY MAX BORE	SQ KEY SIZE	RECT. KEY MAX BORE	RECT. KEY SIZE	SQ BORE MAX		
	Ø126x11 (Ø4.96"x0.41")	19.98-0.05 (0.787"-0.002")	Ø70.05+0.05 (Ø2.758"+0.002")	3 (0.12")	4 x Ø10.5 ON Ø102.0 P.C. (4 x Ø0.41" ON Ø4.02" P.C.)	6x6x40 (0.24"x0.24"x1.57")	F16	4 x M20 x 25 (0.98") DEEP ON Ø165.0 (Ø6.50") P.C.	Ø129.95-0.05 (Ø5.116"-0.002")	73 (2.875")	BS4235	-	-	-	68.0	20 x 12	□ 53.3 (2.098")		
						FA16	4 x 3/4" UNC x 25 (0.98") DEEP ON Ø165.1 (Ø6.50") P.C.	Ø126.87-0.25 (Ø4.995"-0.010")	ANSI B17.1		-	2.500"	5/8" SQ.	2.625"	5/8" x 7/16"				
									DIN 6885		-	-	-	-	-	-		-	



AS PART OF CONTINUOUS PRODUCT DEVELOPMENT, ALL DETAILS SUBJECT TO CHANGE WITHOUT PRIOR NOTICE. FOR UP TO DATE DETAILS PLEASE VISIT <a href="http://www.rotork.com">www.rotork.com</a>									
rotork Gears LEEDS - UK <a href="http://www.rotork.com">www.rotork.com</a>									
Document Type		PUBLCITY		Mass		54.50 kg		Title	
Created		E CHANG		18/02/2015		Drawing Number		HOS7 6:1 MPR4 GEARBOX E-FLANGE INPUT REDUCER, F16/FA16 OUTPUT	
Checked		J DICKINSON		13/03/2015		Sheet		1 of 1	
Approved						Size		A3	
25.1	19.20	54.50	1700	89	0	116	91		
RATIO	M.A.	WEIGHT	MAX OUTPUT	MAX INPUT	X	Y	Z		
DESCRIPTION			TORQUE			CENTRE OF GRAVITY			
1	2	3	4	5	6	7	8		