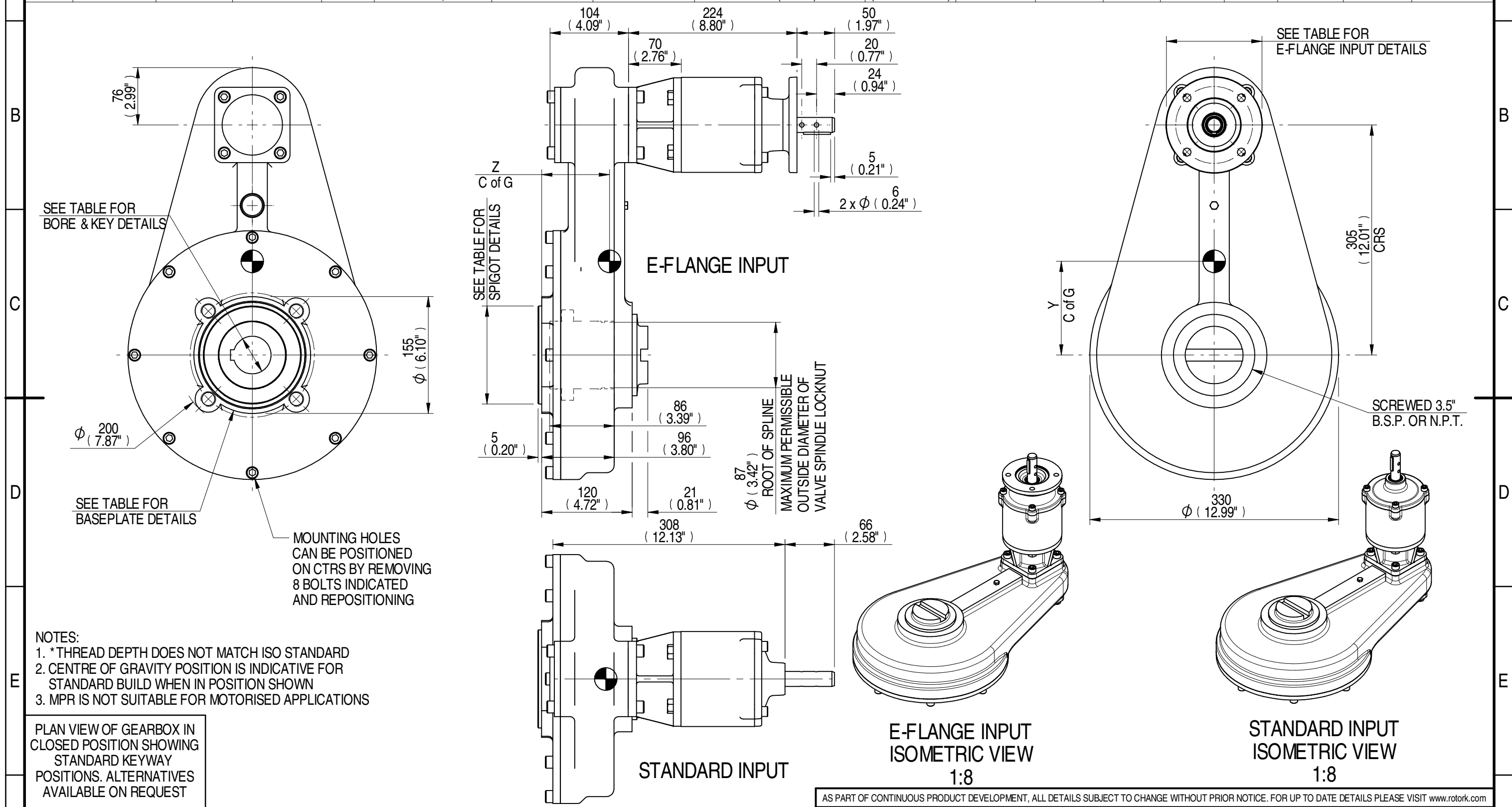


E-FLANGE INPUT DETAILS		MOUNTING HOLES - BOLT CIRCLE (OFF CENTRES)			STEM ACCEPTANCE IN ACCORDANCE TO STANDARD												
INPUT FLANGE	FLANGE O/DIA. + THICKNESS	SHAFT DIA.	RECESS DIA.	RECESS DEPTH	HOLE DETAILS (45° OFF CENTRES)	KEY DETAILS	ISO 5211 / MSS SP-101 MOUNTING OPTION	HOLE DETAILS (45° OFF CENTRES)	SPIGOT DIAMETER	MAX SCREW STEM ACCEPTANCE	STANDARD	MIN BORE	SQ KEY MAX BORE	SQ KEY SIZE	RECT. KEY MAX BORE	RECT. KEY SIZE	SQ BORE MAX
	Ø126x11 (Ø4.96"x0.41")	19.98-0.05 (0.787"-0.002")	Ø70.05+0.05 (Ø2.758"+0.002")	3 (0.12")	4 x Ø10.5 ON Ø102.0 P.C. (4 x Ø0.41" ON Ø4.02" P.C.)	6x6x40 (0.24"x0.24"x1.57")	F16	4 x M20 x 25 (0.98") DEEP ON Ø165.0 (Ø6.50") P.C.	Ø129.95-0.05 (Ø5.116"-0.002")	73 (2.875")	BS4235	-	-	-	68.0	20 x 12	□ 53.3 (2.098")
							FA16	4 x 3/4" UNC x 25 (0.98") DEEP ON Ø165.1 (Ø6.50") P.C.	Ø126.87-0.25 (Ø4.995"-0.010")		ANSI B17.1	-	2.500"	5/8" SQ.	2.625"	5/8" x 7/16"	
											DIN 6885	-	-	-	-	-	



DESCRIPTION	TORQUE	CENTRE OF GRAVITY	Document Type		Mass	Title	
16.7	12.80	56.80	1700	133	0	124	90
RATIO	M.A.	WEIGHT	MAX OUTPUT	MAX INPUT	X	Y	Z
DESCRIPTION			TORQUE		CENTRE OF GRAVITY		
16.7			12.80		56.80		
1700			133		0		
124			90				

AS PART OF CONTINUOUS PRODUCT DEVELOPMENT, ALL DETAILS SUBJECT TO CHANGE WITHOUT PRIOR NOTICE. FOR UP TO DATE DETAILS PLEASE VISIT www.rotork.com							
rotork Gears LEEDS - UK www.rotork.com		This drawing is confidential and is the property of Rotork Gears and must not be reproduced either wholly or partly. All rights in respect of patents, designs and copyrights are reserved. © 2015		Document Type PUBLICITY	Mass 56.80 kg	Title HOS7 4:1 MPR4 GEARBOX STANDARD/E-FLANGE INPUT REDUCER, F16/FA16 OUTPUT	
Created E CHANG		18/02/2015		Dimensions in mm		Drawing Number	
Checked J DICKINSON		13/03/2015		Scale 1:5		PUB-HOS7MPR4-16.7-F16	
Approved				Sheet 1 of 1		Size A3	
				Iss. 01			