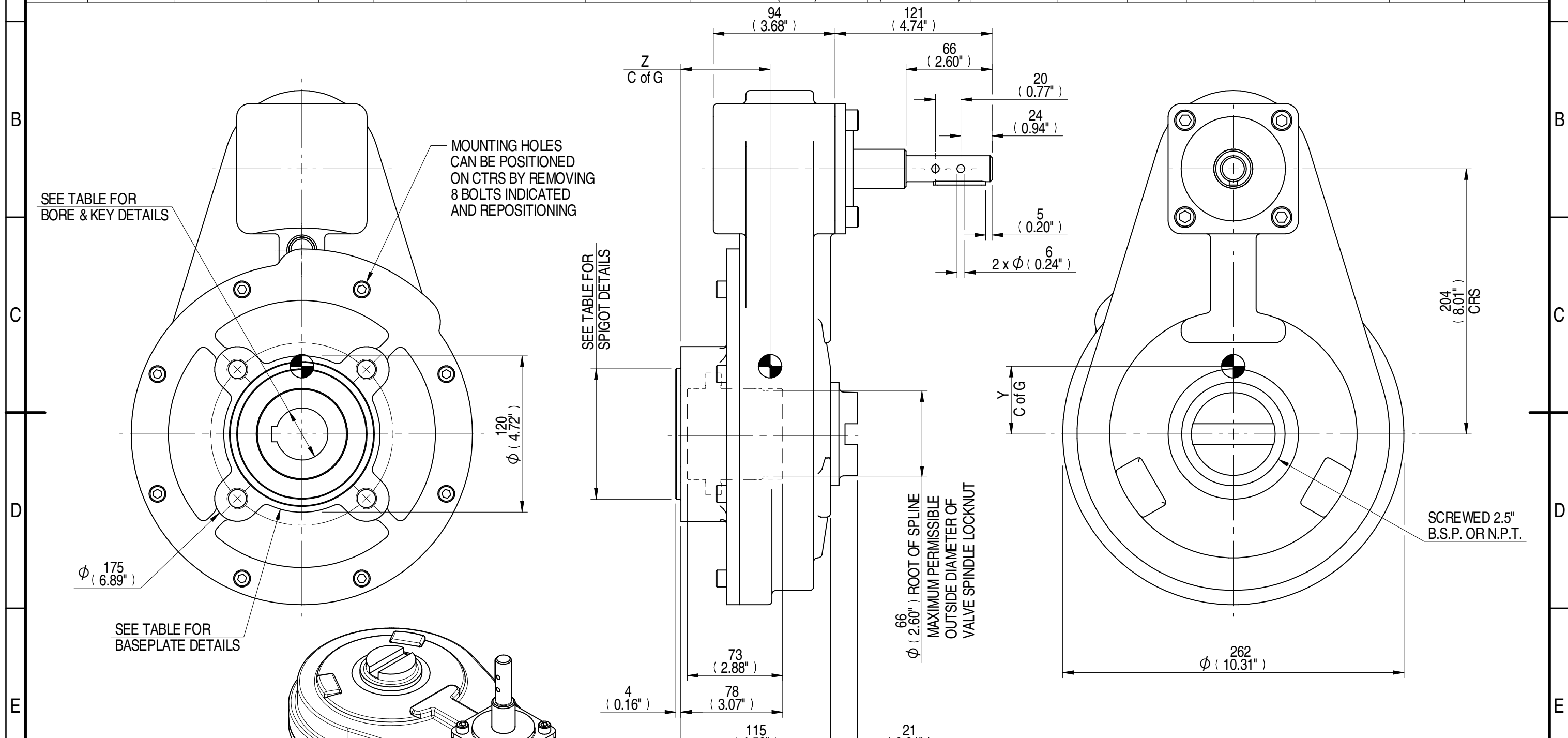


1	2				3			4			5		6				7		8	
INPUT FLANGE DETAILS	MOUNTING HOLES - BOLT CIRCLE (OFF CENTRES)	STEM ACCEPTANCE IN ACCORDANCE TO STANDARD	INPUT FLANGE	FLANGE O/DIA. + THICKNESS	SHAFT DIA.	RECESS DIA.	RECESS DEPTH	HOLE DETAILS (OFF CENTRES)	KEY DETAILS	ISO 5211 / MSS SP-101 MOUNTING OPTION	HOLE DETAILS (45° OFF CENTRES)	SPIGOT DIAMETER	MAX SCREW STEM ACCEPTANCE	STANDARD	MIN BORE	SQ KEY MAX BORE	SQ KEY SIZE	RECT. KEY MAX BORE	RECT. KEY SIZE	SQ BORE MAX
-	-	19.98-0.05 (0.787"-0.002")	-	-	-	-	-	-	6x6x40 (0.24"x0.24"x1.57")	F14	4 x M16 x 20 (0.79") DEEP ON Ø140.0 (Ø5.51") P.C.	Ø99.95-0.05 (Ø3.935"-0.002")	55 (2.125")	BS4235	-	-	-	52.0	16 x 10	□ 40.0 (1.575")
-	-	-	-	-	-	-	-	-	FA14	4 x 5/8" UNC x 20 (0.79") DEEP ON Ø139.7 (Ø5.50") P.C.	Ø95.22-0.10 (Ø3.749"-0.004")	BS46		-	1.875"	1/2" SQ.	2.000"	1/2" x 5/16"		
-	-	-	-	-	-	-	-	-	-	-	-	-		ANSI B17.1	-	1.875"	1/2" SQ.	2.000"	1/2" x 3/8"	
-	-	-	-	-	-	-	-	-	-	-	-	-	-	DIN 6885	-	-	-	-	-	-



NOTES:
 1. * THREAD DEPTH DOES NOT MATCH ISO STANDARD
 2. CENTRE OF GRAVITY POSITION IS INDICATIVE FOR STANDARD BUILD WHEN IN POSITION SHOWN

AS PART OF CONTINUOUS PRODUCT DEVELOPMENT, ALL DETAILS SUBJECT TO CHANGE WITHOUT PRIOR NOTICE. FOR UP TO DATE DETAILS PLEASE VISIT www.rotork.com

	6	4	RATIO	M.A.	WEIGHT	MAX OUTPUT	MAX INPUT	X	Y	Z
DESCRIPTION	TORQUE			CENTRE OF GRAVITY						
	6	5.40	29.45	850	157	0	50	69		
	4	3.60	29.32	850	236	0	52	68		

<p>LEEDS - UK</p> <p>www.rotork.com</p>	<p>This drawing is confidential and is the property of Rotork Gears and must not be reproduced either wholly or partly. All rights in respect of patents, designs and copyrights are reserved. © 2015</p>	Document Type PUBLICITY	Mass 29.29 kg	Title	
		<p>Dimensions in mm</p> <p>Scale 1:3</p>		<p>HOS5 GEARBOX</p> <p>MANUAL INPUT, F14/FA14 OUTPUT</p>	
Created	E CHANG	12/02/2015	Drawing Number		
Checked	J DICKINSON	13/03/2015	PUB-HOS5-46-F14		
Approved	-	-	Sheet 1 of 1	Size A3	Iss. 01