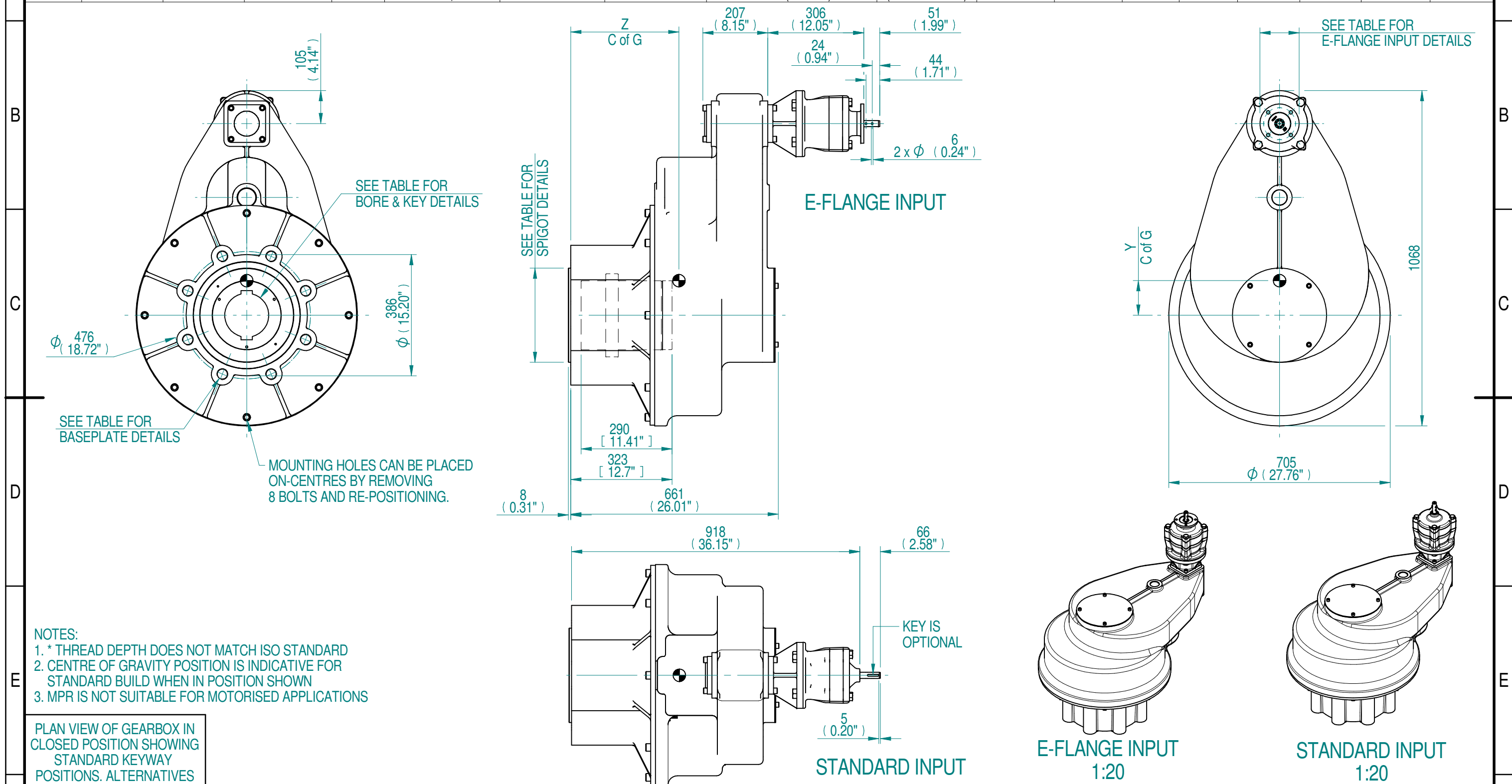


E-FLANGE INPUT DETAILS		MOUNTING HOLES - BOLT CIRCLE (OFF CENTRES)			STEM ACCEPTANCE IN ACCORDANCE TO STANDARD													
INPUT FLANGE	FLANGE O/DIA. + THICKNESS	SHAFT DIA.	RECESS DIA.	RECESS DEPTH	HOLE DETAILS (45° OFF CENTRES)	KEY DETAILS	ISO 5211 / MSS SP-101 MOUNTING OPTION	HOLE DETAILS (22.5° OFF CENTRES)	SPIGOT DIAMETER	MAX SCREW STEM ACCEPTANCE	STANDARD	MIN BORE	SQ KEY MAX BORE	SQ KEY SIZE	RECT. KEY MAX BORE	RECT. KEY SIZE	SQ BORE MAX	
E-FLANGE	Ø125x11 (Ø4.92"x0.41")	19.98-0.05 (0.787"-0.002")	Ø70 +0.07 (Ø2.756"+0.003")	5.5 (0.217")	4 x Ø10.5 ON Ø102.0 P.C. (4 x Ø0.41" ON Ø4.02" P.C.)	6x6x36 (0.24"x0.24"x1.42")	F40*	8 x M36 x 45 (1.77") DEEP ON Ø406.0 (Ø15.98") P.C.	Ø299.95-0.05 (Ø11.809"-0.002")	190 (7.375")	BS4235	-	-	-	170	40x22	□ 122.3 (4.815")	
							FA40	8 x 1.25" UNC x 45 (1.77") DEEP ON Ø406.4 (Ø16.00") P.C.	Ø228.60-0.15 (Ø9.000"-0.006")		ANSI B17.1	-	6.125"	1 17/32" SQ.	6.500"	1 3/4" x 1 1/4"		
											DIN 6885	-	-	-	-	-		-



AS PART OF CONTINUOUS PRODUCT DEVELOPMENT, ALL DETAILS SUBJECT TO CHANGE WITHOUT PRIOR NOTICE. FOR UP TO DATE DETAILS PLEASE VISIT <a href="http://www.rotork.com">www.rotork.com</a>																	
<b>rotork</b> Gears LEEDS - UK <a href="http://www.rotork.com">www.rotork.com</a>		This drawing is confidential and is the property of Rotork Gears and must not be reproduced either wholly or partly. All rights in respect of patents, designs and copyrights are reserved. © 2019		Document Type <b>PUBLICITY</b>		Mass <b>734.67 kg</b>		Title <b>HOS19 MPR28 662.4 F40 E-FLANGE STANDARD / E-FLANGE INPUT REDUCER, F40/FA40 OUTPUT.</b>		Created <b>M JONES</b>		10/05/2019		Drawing Number <b>PUB-HOS19MPR28-662.4-F40</b>		Iss. <b>0-0</b>	
RATIO		M.A.		WEIGHT		MAX OUTPUT		MAX INPUT		X		Y		Z		Sheet <b>1</b> of <b>1</b> Size <b>A3</b>	
662.4		479.1		734.67 kg		46,100 Nm		96.2 Nm		0		110		344			
DESCRIPTION		TORQUE		CENTRE OF GRAVITY													

Rev 0-0