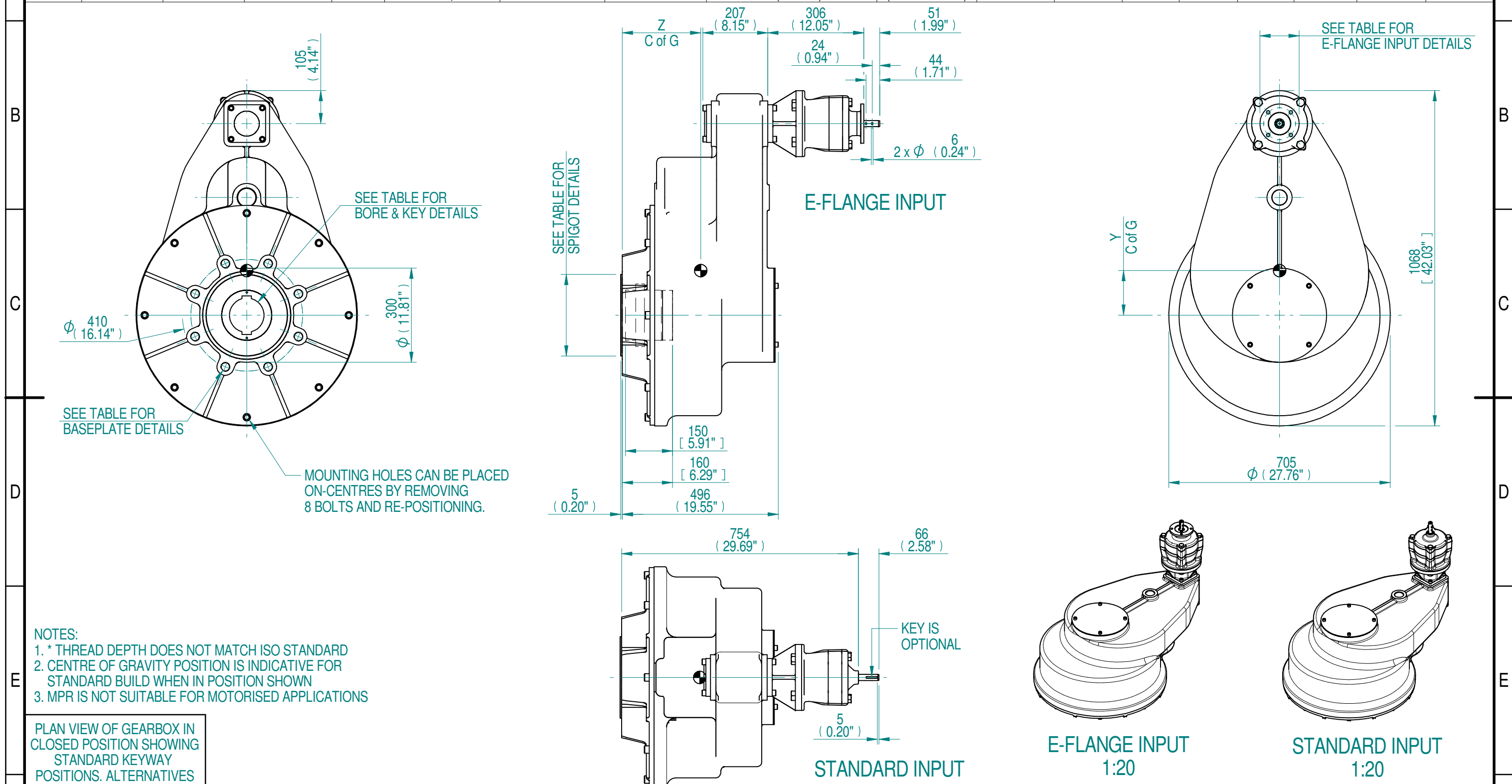


1	2 E-FLANGE INPUT DETAILS				3				4 MOUNTING HOLES - BOLT CIRCLE (OFF CENTRES)			6 STEM ACCEPTANCE IN ACCORDANCE TO STANDARD					8
INPUT FLANGE	FLANGE O/DIA. + THICKNESS	SHAFT DIA.	RECESS DIA.	RECESS DEPTH	HOLE DETAILS (45° OFF CENTRES)	KEY DETAILS	ISO 5211 / MSS SP-101 MOUNTING OPTION	HOLE DETAILS (22.5° OFF CENTRES)	SPIGOT DIAMETER	MAX SCREW STEM ACCEPTANCE	STANDARD	MIN BORE	SQ KEY MAX BORE	SQ KEY SIZE	RECT. KEY MAX BORE	RECT. KEY SIZE	SQ BORE MAX
E-FLANGE	Ø125x11 (Ø4.92"x0.41")	19.98-0.05 (0.787"-0.002")	Ø70 +0.07 (Ø2.756"+0.003")	5.5 (0.217")	4 x Ø10.5 ON Ø102.0 P.C. (4 x Ø0.41" ON Ø4.02" P.C.)	6x6x36 (0.24"x0.24"x1.42")	F35*	8 x M30 x 40 (1.57") DEEP ON Ø356.0 (Ø14.02") P.C.	Ø259.95-0.05 (Ø10.234"-0.002")	127 (5.000")	BS4235	-	-	-	121.0	32 x 18	□ 86.6 (3.409")
							FA35	8 x 1" UNC x 40 (1.57") DEEP ON Ø355.6 (Ø14.00") P.C.	Ø215.80-0.25 (Ø8.496"-0.008")		BS46	-	4.500"	1 1/4" SQ.	4.625"	1 1/4" x 7/8"	
											ANSI B17.1	-	4.500"	1" SQ.	4.625"	1 1/4" x 7/8"	
											DIN 6885	-	-	-	-	-	



AS PART OF CONTINUOUS PRODUCT DEVELOPMENT, ALL DETAILS SUBJECT TO CHANGE WITHOUT PRIOR NOTICE. FOR UP TO DATE DETAILS PLEASE VISIT www.rotork.com														
1	2		3		4			5		6		7		8
RATIO	M.A.	WEIGHT	MAX OUTPUT	MAX INPUT	X	Y	Z	Document Type	Mass	Dimensions in mm	Scale	Title	Drawing Number	
662.4	4.0	569.23 kg	46,100 Nm	96.2 Nm	0	142	250	PUBLICITY	569.23 kg	mm	1:12	HOS17 MPR28 662.4 GEARBOX STANDARD / E-FLANGE INPUT REDUCER, F35/FA35 OUTPUT.	PUB-HOS17MPR28-662.4-F35	
DESCRIPTION			TORQUE			CENTRE OF GRAVITY			Created	M JONES	10/05/2019	Drawing Number	Iss.	
									Checked			PUB-HOS17MPR28-662.4-F35	0-0	
									Approved	N.Coope	2019-10-15	Sheet 1 of 1	Size A3	

Rev 0-0