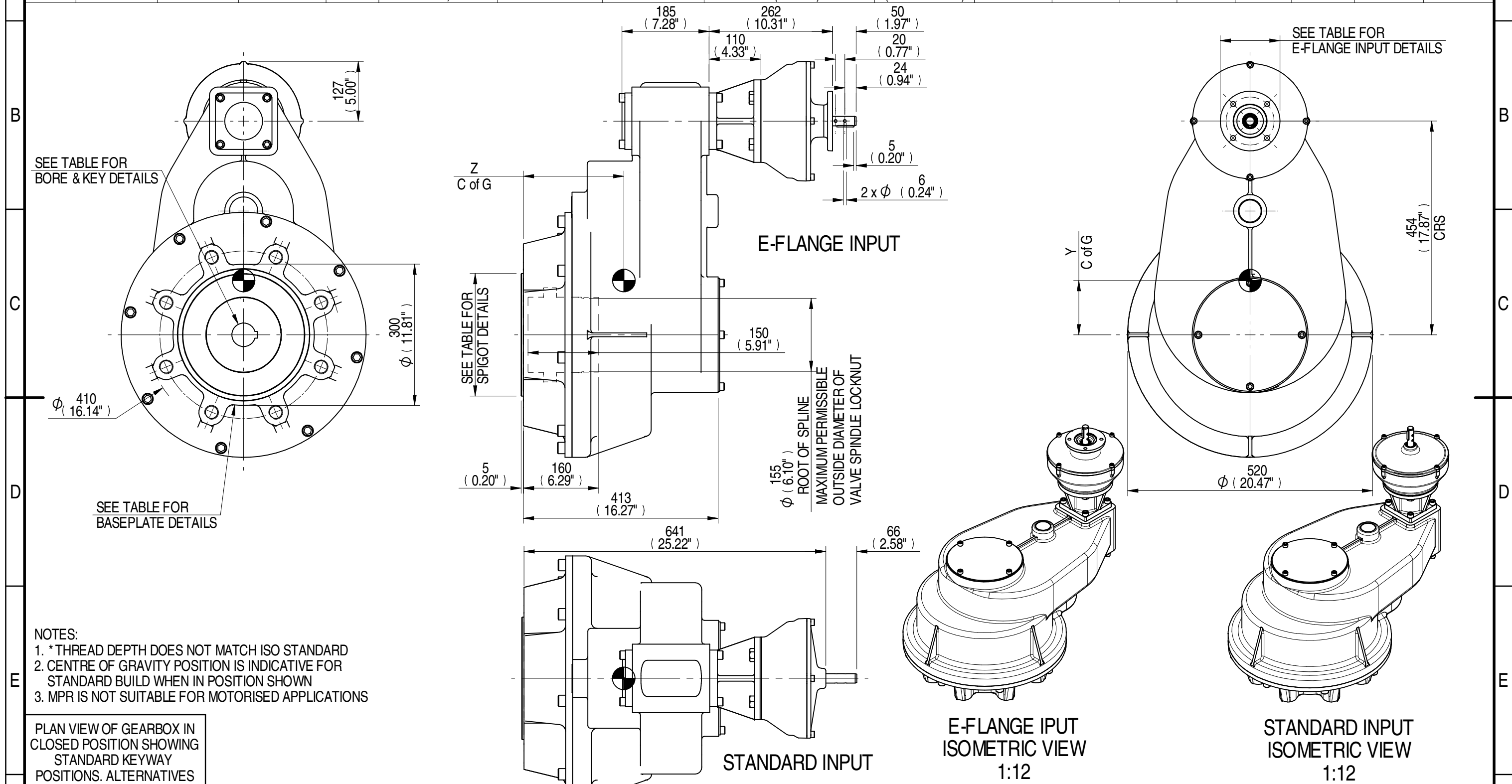


1	2				3		4			5		6				7		8
A	E-FLANGE INPUT DETAILS				MOUNTING HOLES - BOLT CIRCLE (OFF CENTRES)			STEM ACCEPTANCE IN ACCORDANCE TO STANDARD							A			
INPUT FLANGE	FLANGE O/DIA. + THICKNESS	SHAFT DIA.	RECESS DIA.	RECESS DEPTH	HOLE DETAILS (45° OFF CENTRES)	KEY DETAILS	ISO 5211 / MSS SP-101 MOUNTING OPTION	HOLE DETAILS (22.5° OFF CENTRES)	SPIGOT DIAMETER	MAX SCREW STEM ACCEPTANCE	STANDARD	MIN BORE	SQ KEY MAX BORE	SQ KEY SIZE	RECT. KEY MAX BORE	RECT. KEY SIZE	SQ BORE MAX	
	Ø126x11 (Ø4.96"x0.41")	19.98-0.05 (0.787"-0.002")	Ø70.05+0.05 (Ø2.758"+0.002")	3 (0.12")	4 x Ø10.5 ON Ø102.0 P.C. (4 x Ø0.41" ON Ø4.02" P.C.)	6x6x40 (0.24"x0.24"x1.57")	F35	8 x M30 x 40 (1.57") DEEP ON Ø356.0 (Ø14.02") P.C.	Ø259.95-0.05 (Ø10.234"-0.002")	127 (5.000")	BS4235	-	-	-	121.0	32 x 18	□ 86.6 (3.409")	
						FA35	8 x 1" UNC x 40 (1.57") DEEP ON Ø355.6 (Ø14.00") P.C.	Ø215.80-0.25 (Ø8.496"-0.008")	ANSI B17.1		-	4.500"	1 1/4" SQ.	4.625"	1 1/4" x 7/8"			
									DIN 6885		-	-	-	-	-			



AS PART OF CONTINUOUS PRODUCT DEVELOPMENT, ALL DETAILS SUBJECT TO CHANGE WITHOUT PRIOR NOTICE. FOR UP TO DATE DETAILS PLEASE VISIT www.rotork.com										
rotork Gears LEEDS - UK www.rotork.com		Document Type PUBLICITY		Mass 298.34 kg		Title HOS15 15:1 MPR10 GEARBOX STANDARD/E-FLANGE INPUT REDUCER, F35/FA35 OUTPUT.		Drawing Number PUB-HOS15MPR10-151.9-F35		Iss. 01
Created E CHANG		10/03/2015		Checked J DICKINSON		17/03/2015		Approved		Sheet 1 of 1 Size A3
1	2	3	4	5	6	7	8	9	10	
RATIO	151.9	M.A.	116.20	WEIGHT	298.34	MAX OUTPUT	15917	MAX INPUT	137	CENTRE OF GRAVITY
X	0	Y	115	Z	213	DESCRIPTION	TORQUE	CENTRE OF GRAVITY		

Rev 04