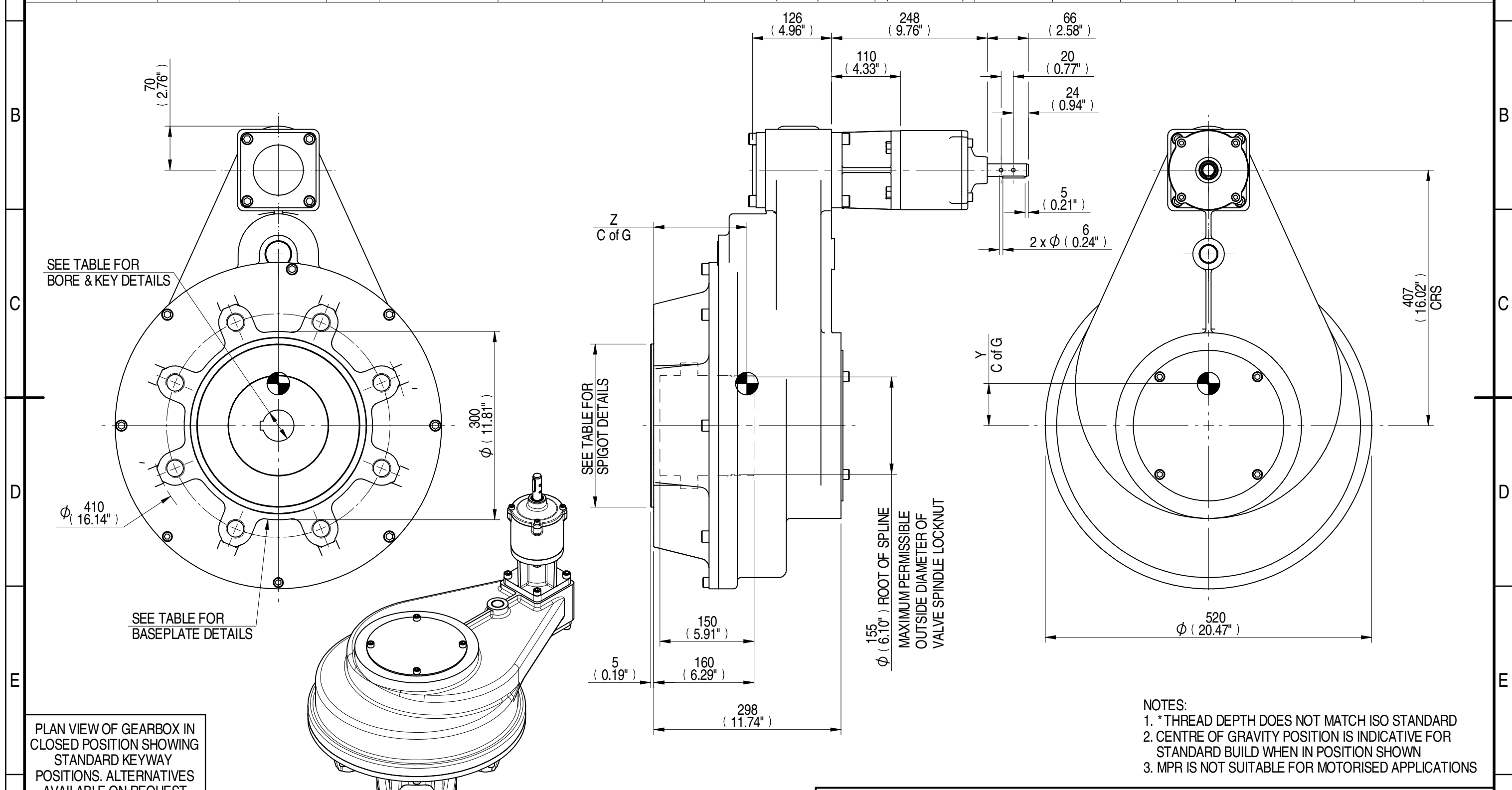


E-FLANGE INPUT DETAILS		MOUNTING HOLES - BOLT CIRCLE (OFF CENTRES)				STEM ACCEPTANCE IN ACCORDANCE TO STANDARD											
INPUT FLANGE	FLANGE O/DIA. + THICKNESS	SHAFT DIA.	RECESS DIA.	RECESS DEPTH	HOLE DETAILS (45° OFF CENTRES)	KEY DETAILS	ISO 5211 / MSS SP-101 MOUNTING OPTION	HOLE DETAILS (22.5° OFF CENTRES)	SPIGOT DIAMETER	MAX SCREW STEM ACCEPTANCE	STANDARD	MIN BORE	SQ KEY MAX BORE	SQ KEY SIZE	RECT. KEY MAX BORE	RECT. KEY SIZE	SQ BORE MAX
-	-	19.98-0.05 (0.787"-0.002")	-	-	-	6x6x40 (0.24"x0.24"x1.57")	F35	8 x M30 x 40 (1.57") DEEP ON Ø356.0 (Ø14.02") P.C.	Ø259.95-0.05 (Ø10.234"-0.002")	127 (5.000")	BS4235	-	-	-	121.0	32 x 18	□ 98.4 (3.874")
						FA35	8 x 1" UNC x 40 (1.57") DEEP ON Ø355.6 (Ø14.00") P.C.	Ø215.80-0.25 (Ø8.496"-0.008")	ANSI B17.1		-	4.500"	1 1/4" SQ.	4.625"	1 1/4" x 7/8"		
									DIN 6885		-	-	-	-	-		



DESCRIPTION	TORQUE	CENTRE OF GRAVITY	Document Type		Mass	Title							
90.9	69.50	210.20	9525	137	0	67	148	PUBLICITY	Mass 210.20 kg	Title			
RATIO	M.A.	WEIGHT	MAX OUTPUT	MAX INPUT	X	Y	Z			Dimensions in mm		HOS13 15:1 MPR6 GEARBOX STANDARD INPUT REDUCER, F35/FA35 OUTPUT.	
AS PART OF CONTINUOUS PRODUCT DEVELOPMENT, ALL DETAILS SUBJECT TO CHANGE WITHOUT PRIOR NOTICE. FOR UP TO DATE DETAILS PLEASE VISIT www.rotork.com								Scale 1:6		Drawing Number			
rotork Gears LEEDS - UK www.rotork.com								Created	E CHANG	09/03/2015	PUB-HOS13MPR6-90.9-MAN-F35		Iss.
								Checked	J DICKINSON	16/03/2015	01		
								Approved			Sheet 1 of 1 Size A3		

Rev 04