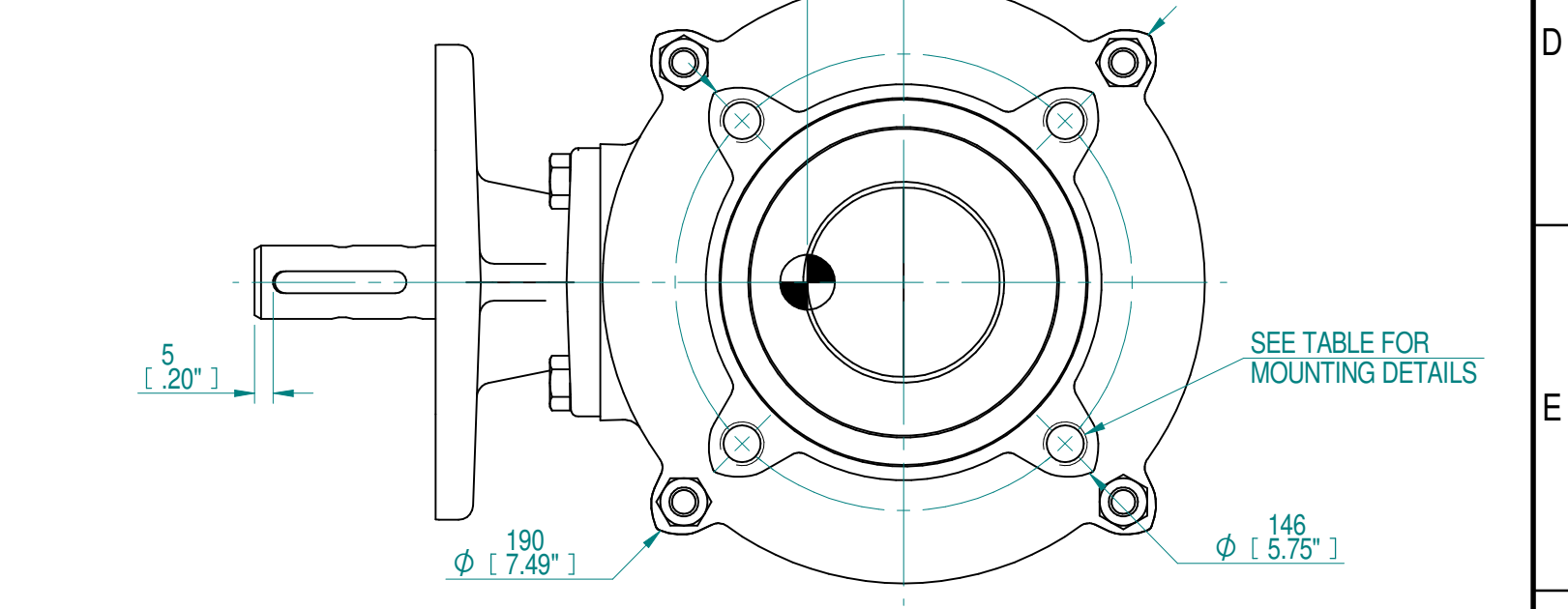
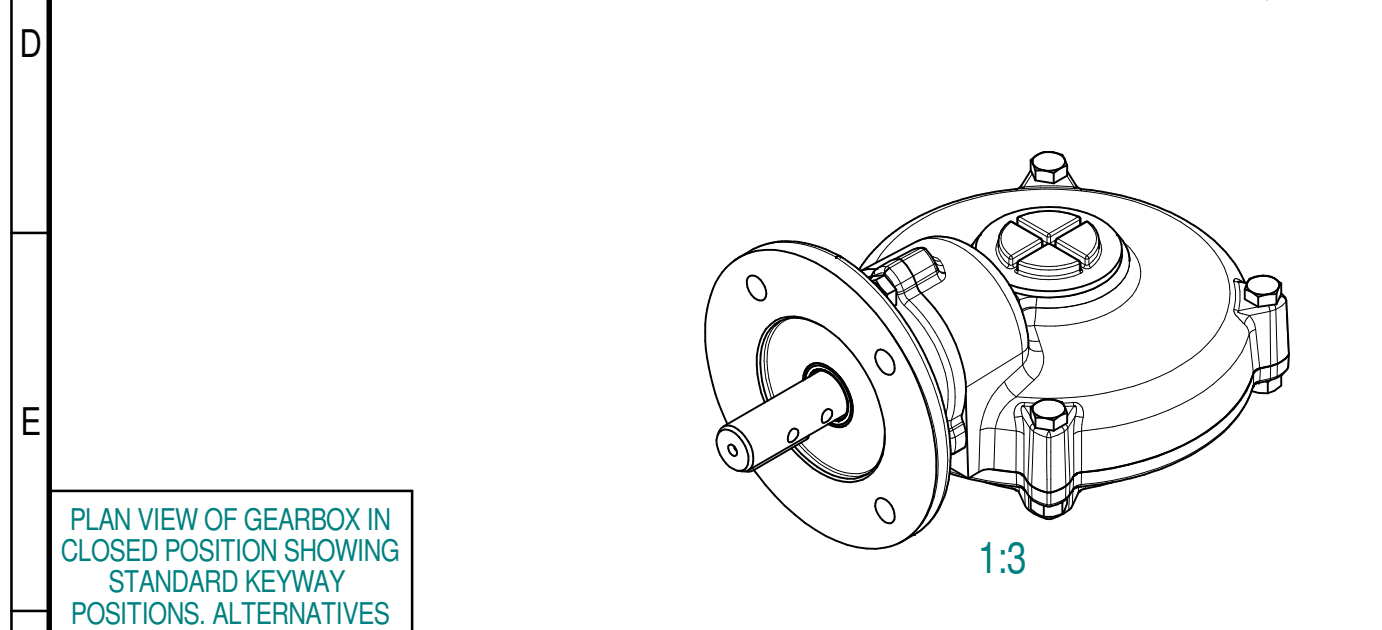
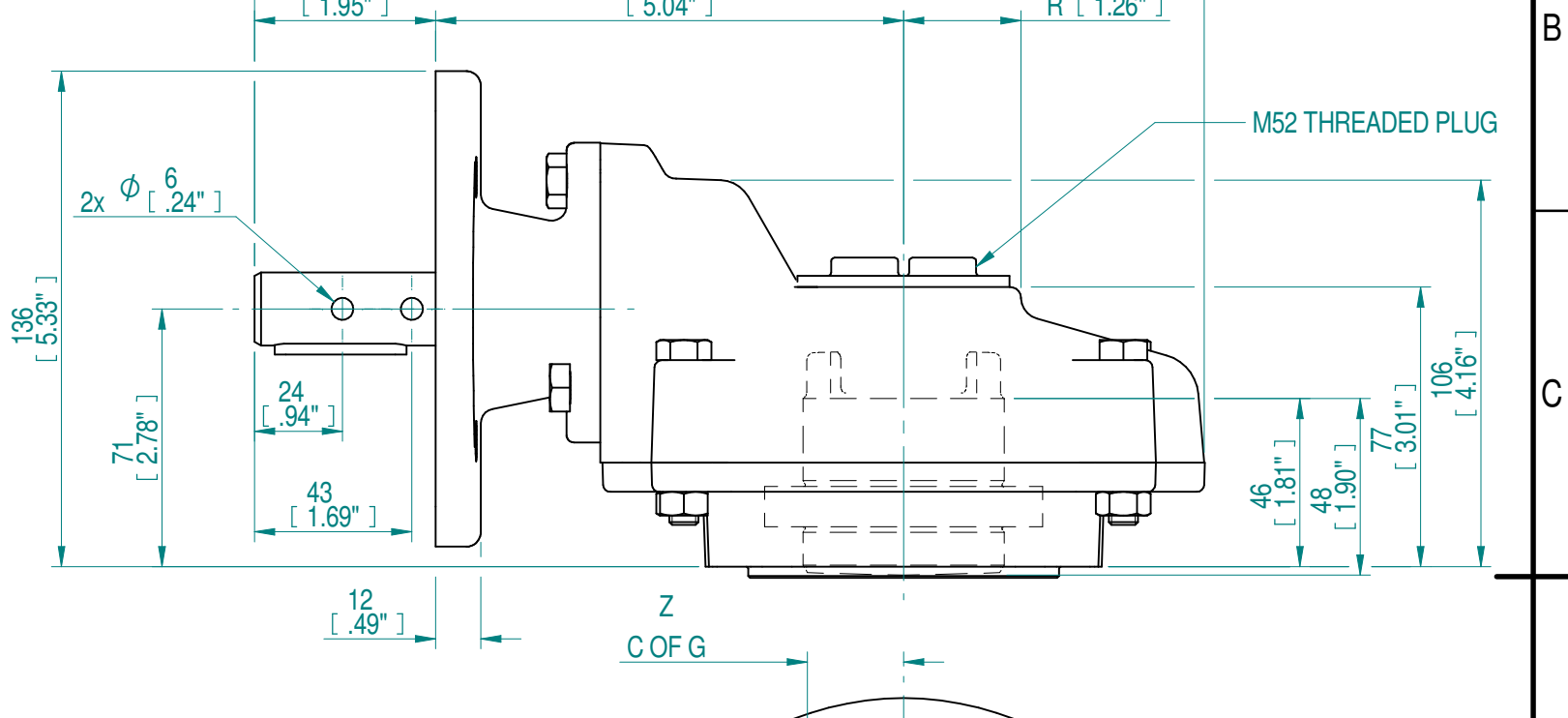
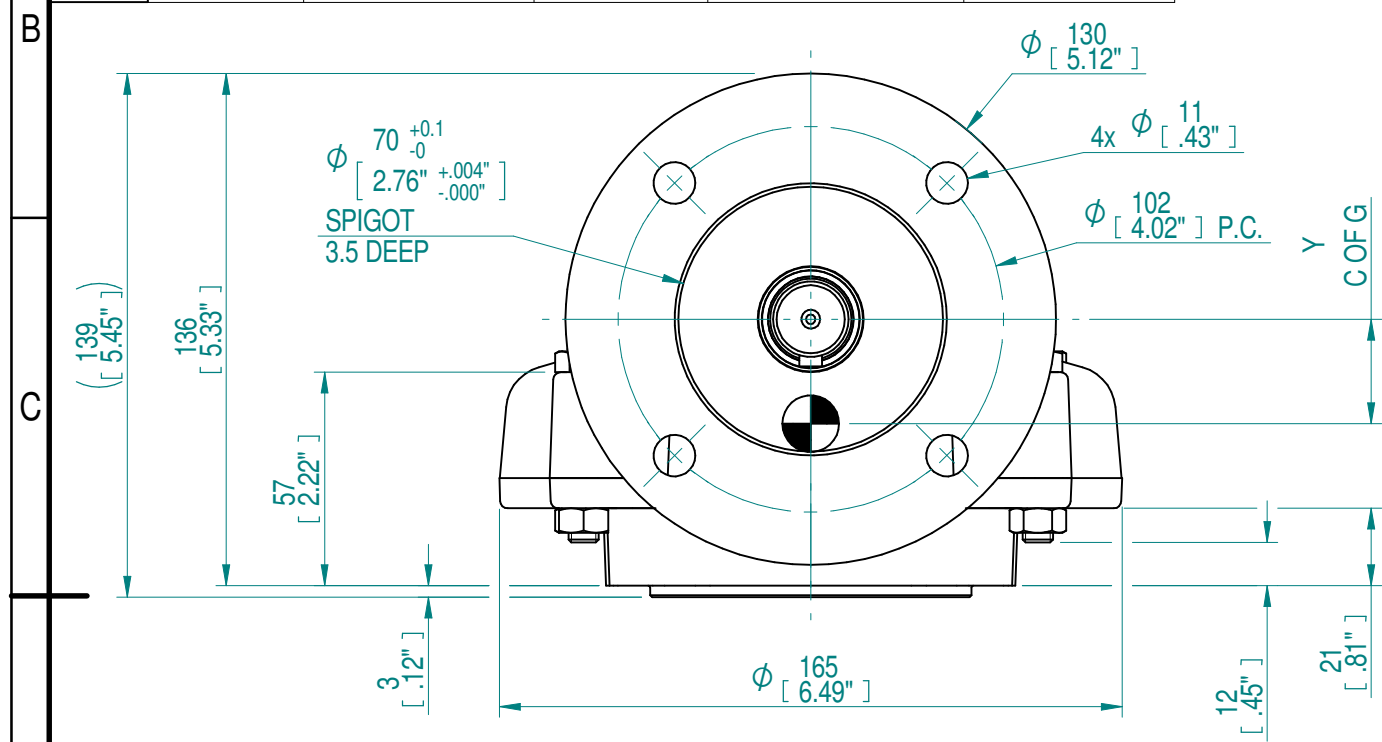
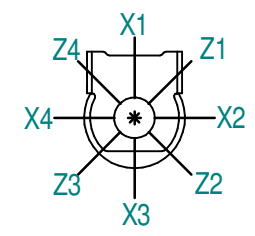


KEYWAY MACHINING (1 OR 2 KEYS AT 180°)					STEM ACCEPTANCE IN ACCORDANCE TO STANDARD			INPUT DETAILS		MOUNTING HOLES - BOLT CIRCLE (OFF CENTRES)		
STANDARD	SQ KEY MAX BORE	SQ KEY SIZE	RECT. KEY MAX	RECT. KEY SIZE	MAX SCREW STEM ACCEPTANCE	MAX SQ BORE	MAX SLOT SIZE	SHAFT DIA.	KEY DETAILS	ISO 5211 / MSS SP-101 MOUNTING OPTION	HOLE DETAILS (OFF CENTRES)	SPIGOT DIAMETER
BS4235	1.500"	□3/8"	40	12 x 8	40 (1.57")	□28 (1.10")	40 x 28AF (1.57" x 1.10"AF)	Ø20-0.10 (0.787"-0.004")	6x6x36 (0.24"x0.24"x1.42")	F12	4xM12x18 (0.71") DEEP ON Ø125 (Ø4.92") P.C.	Ø84.95-0.05 (Ø3.34"-0.02")
BS46			7/16" x 5/16"									
ANSI B17.1 DIN 6885			3/8" x 1/4"									
BS4235	1.250"	□5/16"	32	12 x 8	40 (1.57")	□28 (1.10")	40 x 28AF (1.57" x 1.10"AF)	Ø20-0.10 (0.787"-0.004")	6x6x36 (0.24"x0.24"x1.42")	FA12	4x1/2-13"UNCx18 (0.71") DEEP ON Ø125.73 (Ø4.95") P.C.	Ø84.95-0.05 (Ø3.34"-0.02")
BS46			3/8" x 1/4"									
ANSI B17.1 DIN 6885			5/16" x 1/4"									



PLAN VIEW OF GEARBOX IN CLOSED POSITION SHOWING STANDARD KEYWAY POSITIONS. ALTERNATIVES AVAILABLE ON REQUEST



NOTES:  
1. CENTRE OF GRAVITY POSITION IS INDICATIVE FOR STANDARD BUILD WHEN IN POSITION SHOWN

3	N/A	2.6	8.8Kg	270Nm	108Nm	0	28	26
RATIO	TURNS TO CLOSE	M.A. ±15%	WEIGHT	MAX OUTPUT	MAX INPUT	X	Y	Z
DESCRIPTION			TORQUE			CENTRE OF GRAVITY		

AS PART OF CONTINUOUS PRODUCT DEVELOPMENT, ALL DETAILS SUBJECT TO CHANGE WITHOUT PRIOR NOTICE. FOR UP TO DATE DETAILS PLEASE VISIT [www.rotork.com](http://www.rotork.com)

	Document Type <b>PUBLICITY</b>	Title <b>HOB3 PUBLICITY ASSEMBLY - E-FLANGE INPUT - F12/FA12 OUTPUT HOB3</b> Drawing Number <b>PUB-HOB3-EFLG-F12_FA12</b>	Iss. <b>0-0</b>
	Dimensions in mm		
<b>LEEDS - UK</b> <a href="http://www.rotork.com">www.rotork.com</a>	Sheet <b>1</b> of <b>1</b> Size <b>A3</b>		