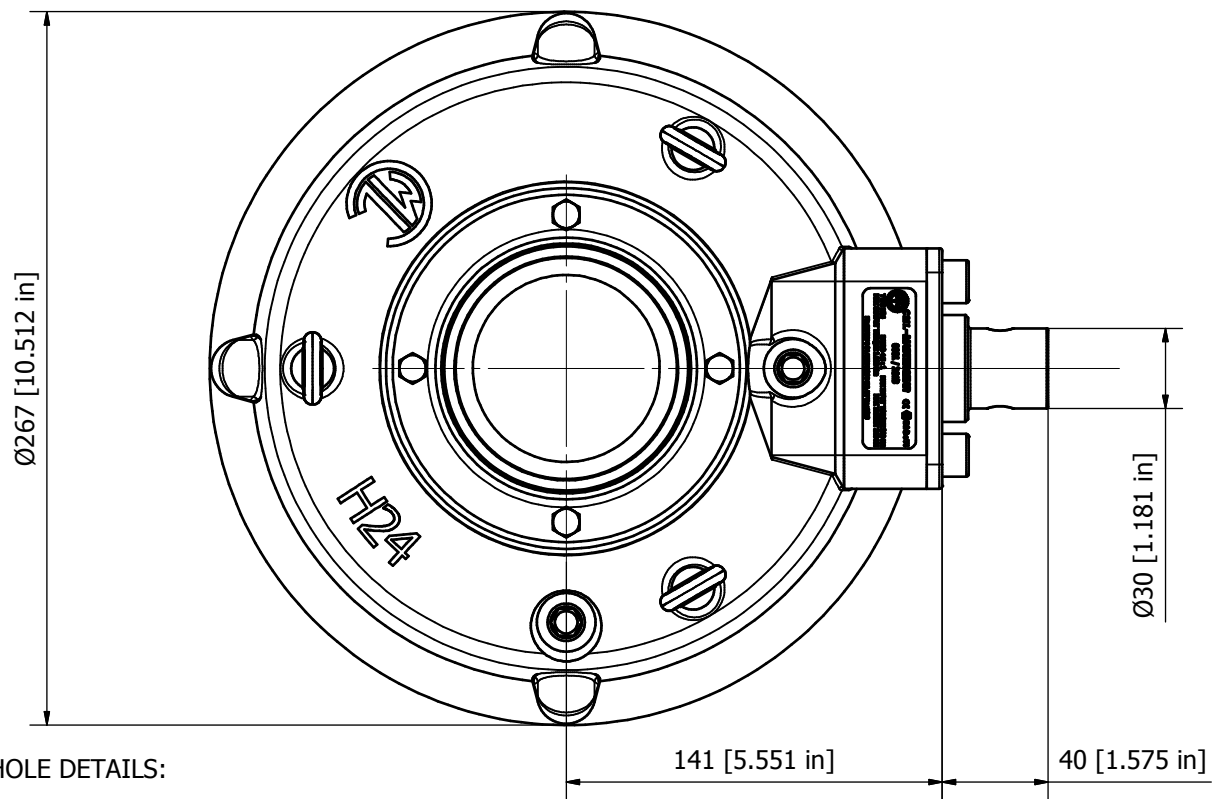
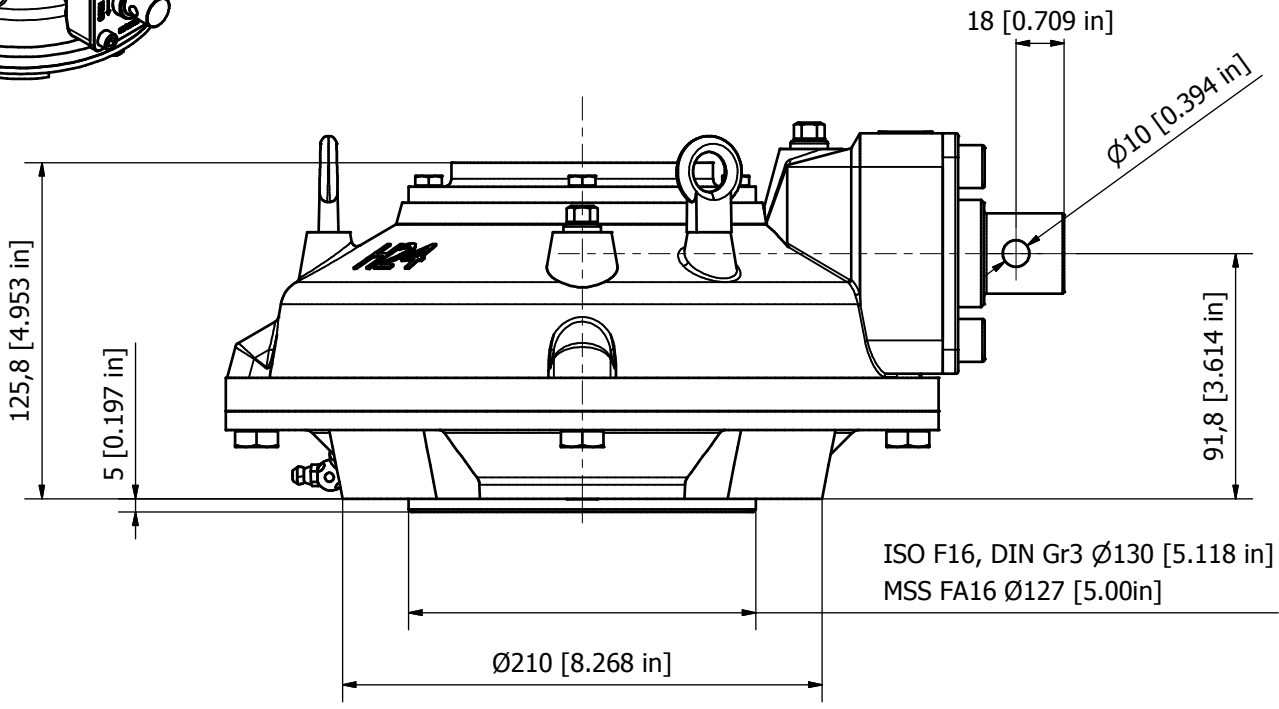
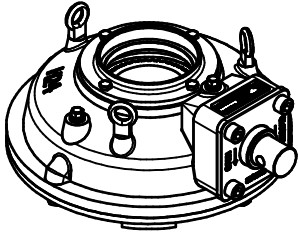


# H24 BEVEL GEAR



**MOUNTING HOLE DETAILS:**

ISO F16 - DIN Gr.3..... 4x M20 ON P.C.D.165 [6.496in]  
 MSS FA16..... 4x 3/4"-10 UNC ON P.C.D. 165.1 [6.50in]

**GENERAL INFORMATION**

TYPE	MAX OUTPUT TORQUE	RATIO	M.A.	MAX INPUT TORQUE	MAX THRUST	APPROX.WEIGHT
H24	1.100 Nm / 9.736 in-lb	4.5:1	4.05	272 Nm / 2.407 in-lb	240 KN / 54.000 Lbs	25 Kg / 55 Lbs



DIVISION OF REGAL-BELOIT CORPORATION

THIS DRAWING/DESIGN IS THE PROPERTY OF MASTERGEAR, AND MUST NOT BE USED WITHOUT THEIR SPECIFIC WRITTEN CONSENT ©

DO NOT SCALE



APPROVED BY  
DL

DRAWING No.  
H24 MAN  
rev.1

09-09-14