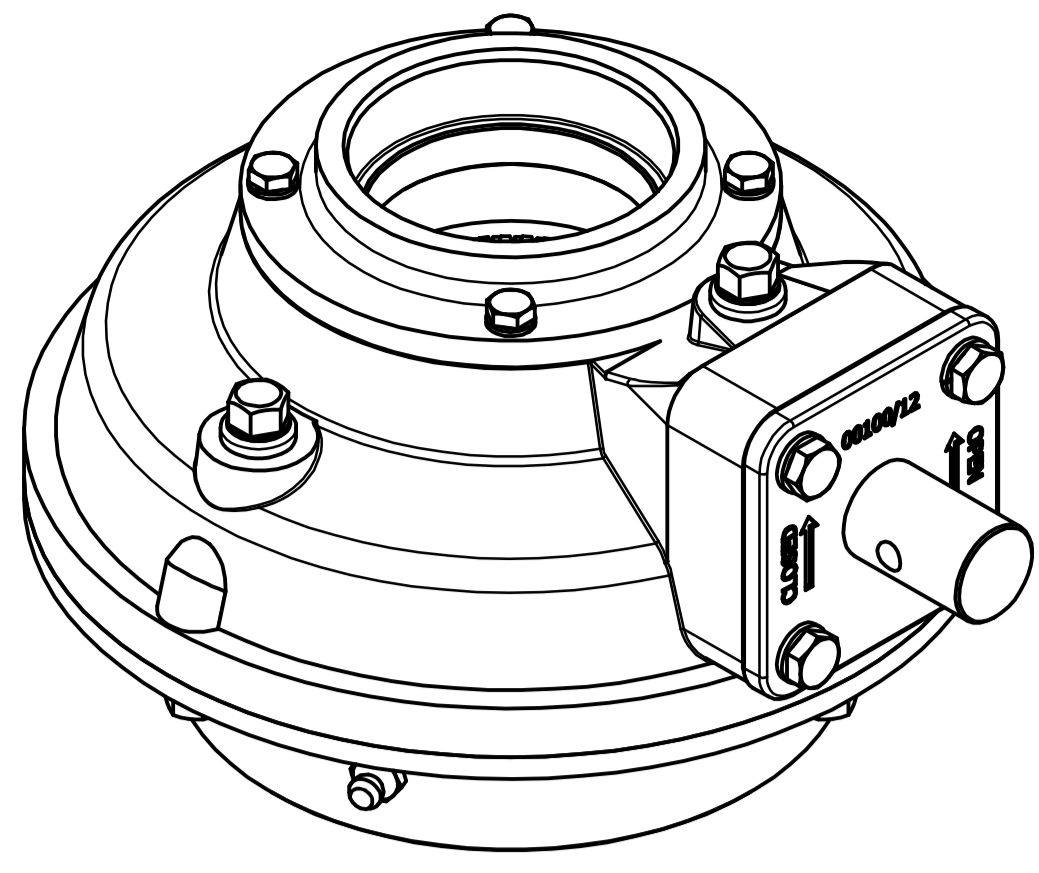
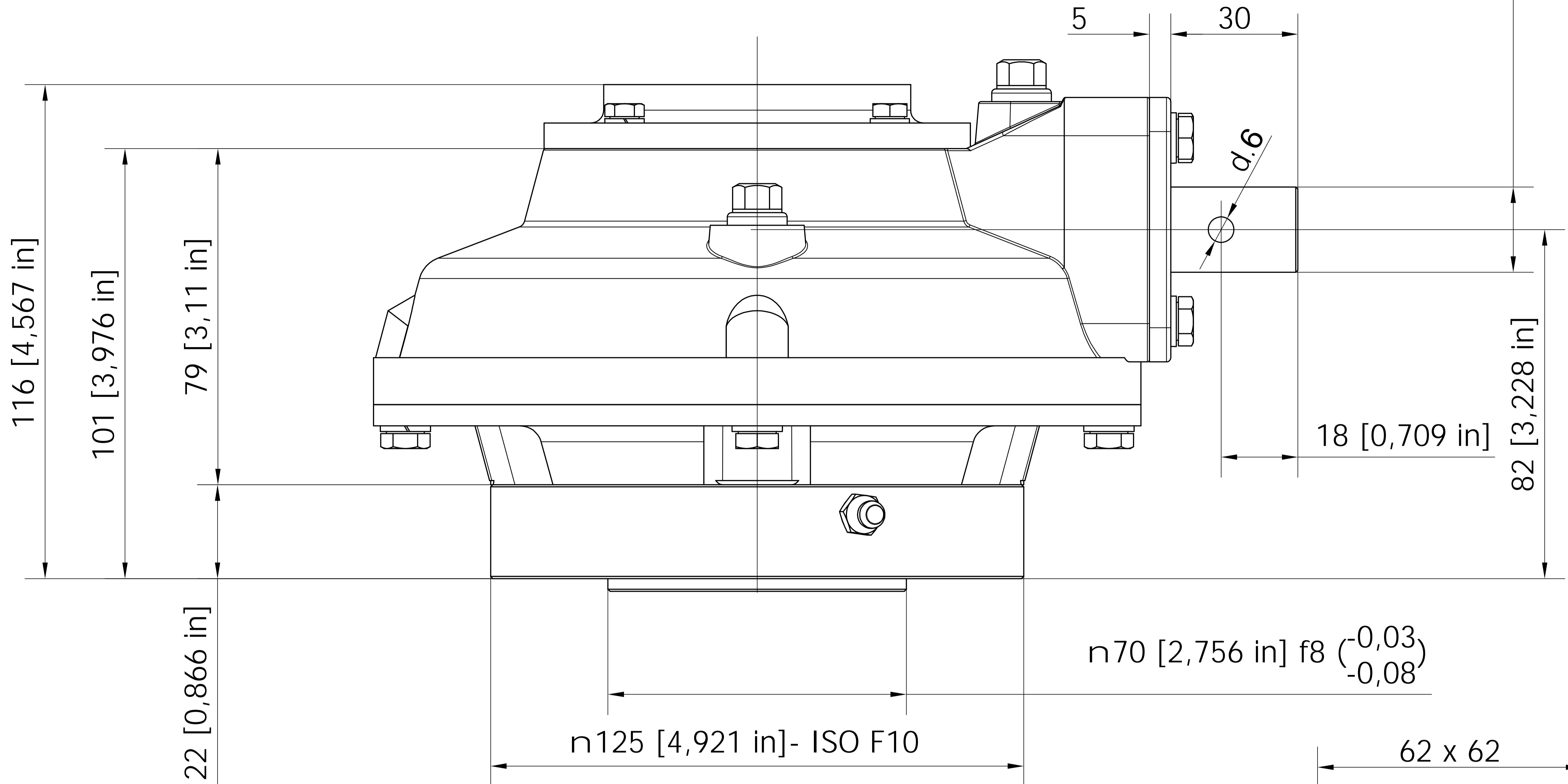


H07 BEVEL GEAR

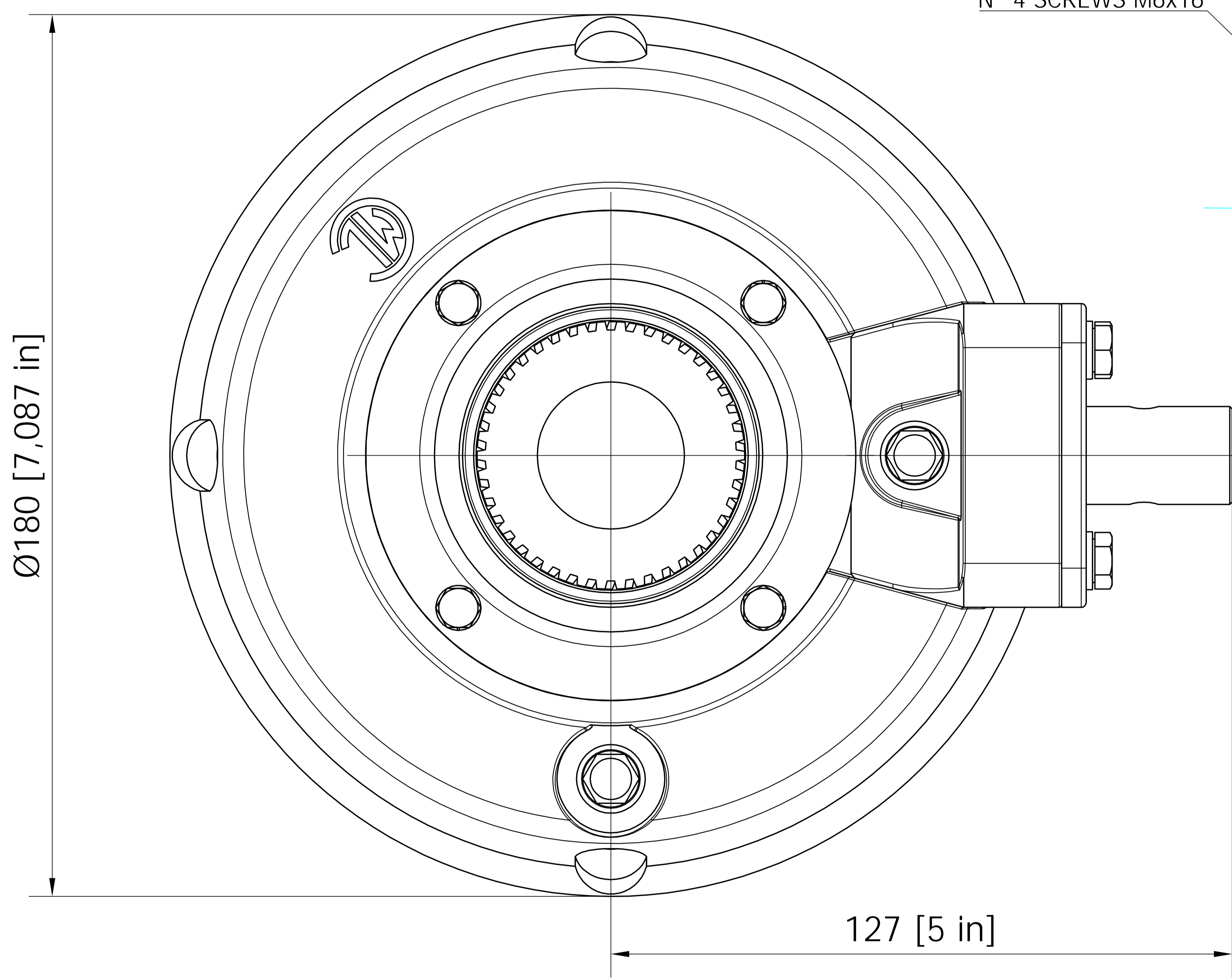


n20 [0,787 in] e9 $\begin{matrix} (-0,04) \\ -0,09 \end{matrix}$

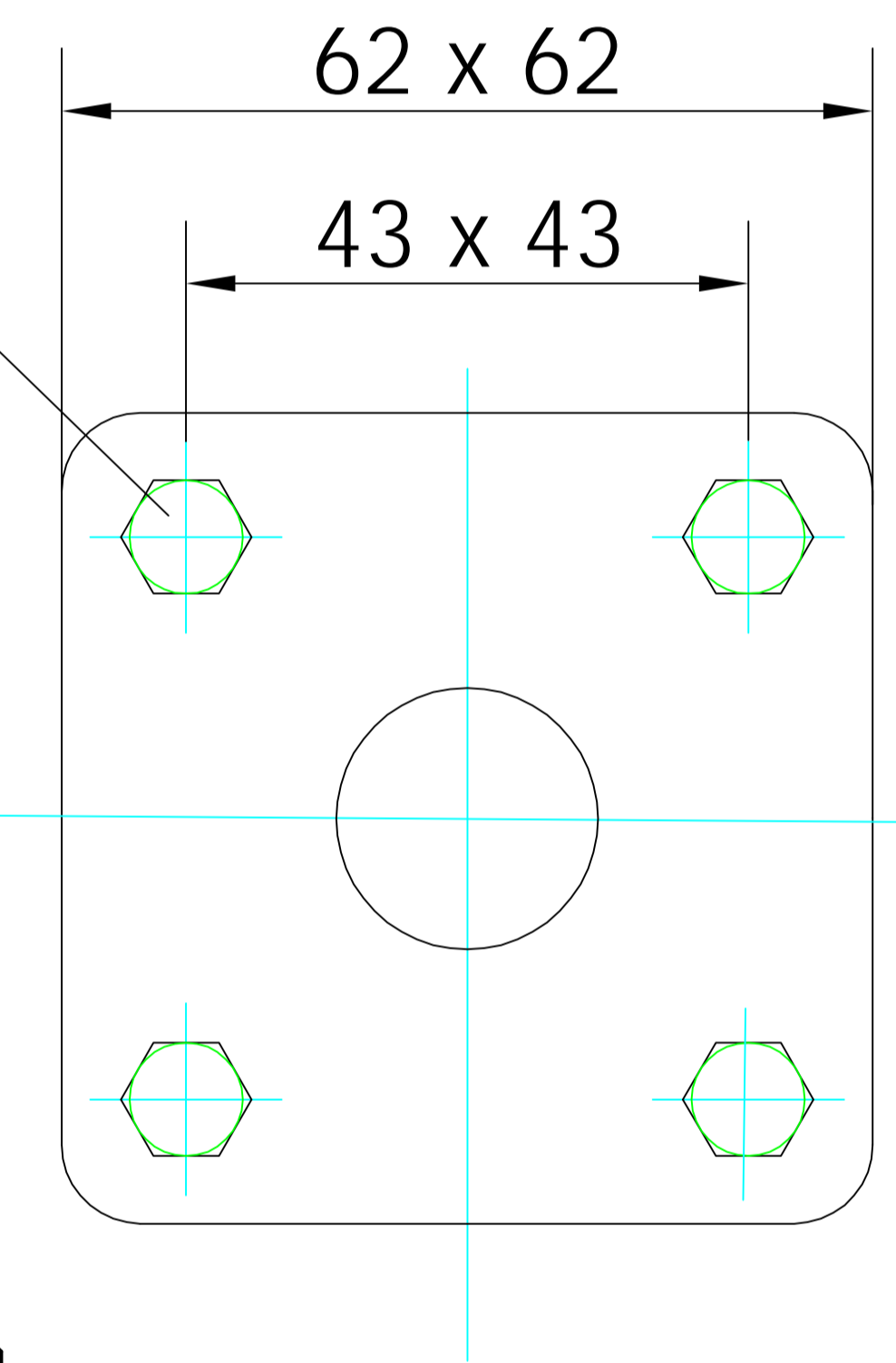


n70 [2,756 in] f8 $\begin{matrix} (-0,03) \\ -0,08 \end{matrix}$

n125 [4,921 in]- ISO F10



N° 4 SCREWS M6x16



MOUNTING HOLE DETAILS:
ISO F10 - DIN Gr.0..... 4x M10 ON P.C.D.102 [4.015in]

GENERAL INFORMATION

TYPE	MAX OUTPUT TORQUE	RATIO	M.A.	MAX INPUT TORQUE	MAX THRUST	APPROX.WEIGHT
H07	300 Nm / 2.655 in-lb	4.5:1	4.05	74 Nm / 655 in-lb	70 KN / 15.700 Lbs	10.5 Kg / 23.1 Lbs



DIVISION OF REGAL-BELOIT CORPORATION

THIS DRAWING/DESIGN IS THE PROPERTY OF MASTERGEAR, AND MUST NOT BE USED WITHOUT THEIR SPECIFIC WRITTEN CONSENT©

DO NOT SCALE
APPROVED BY
DL

DRAWING No.
H07 MAN rev.1
10-01-14