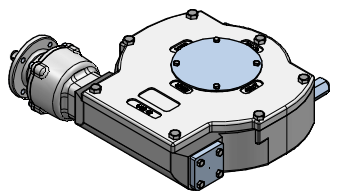
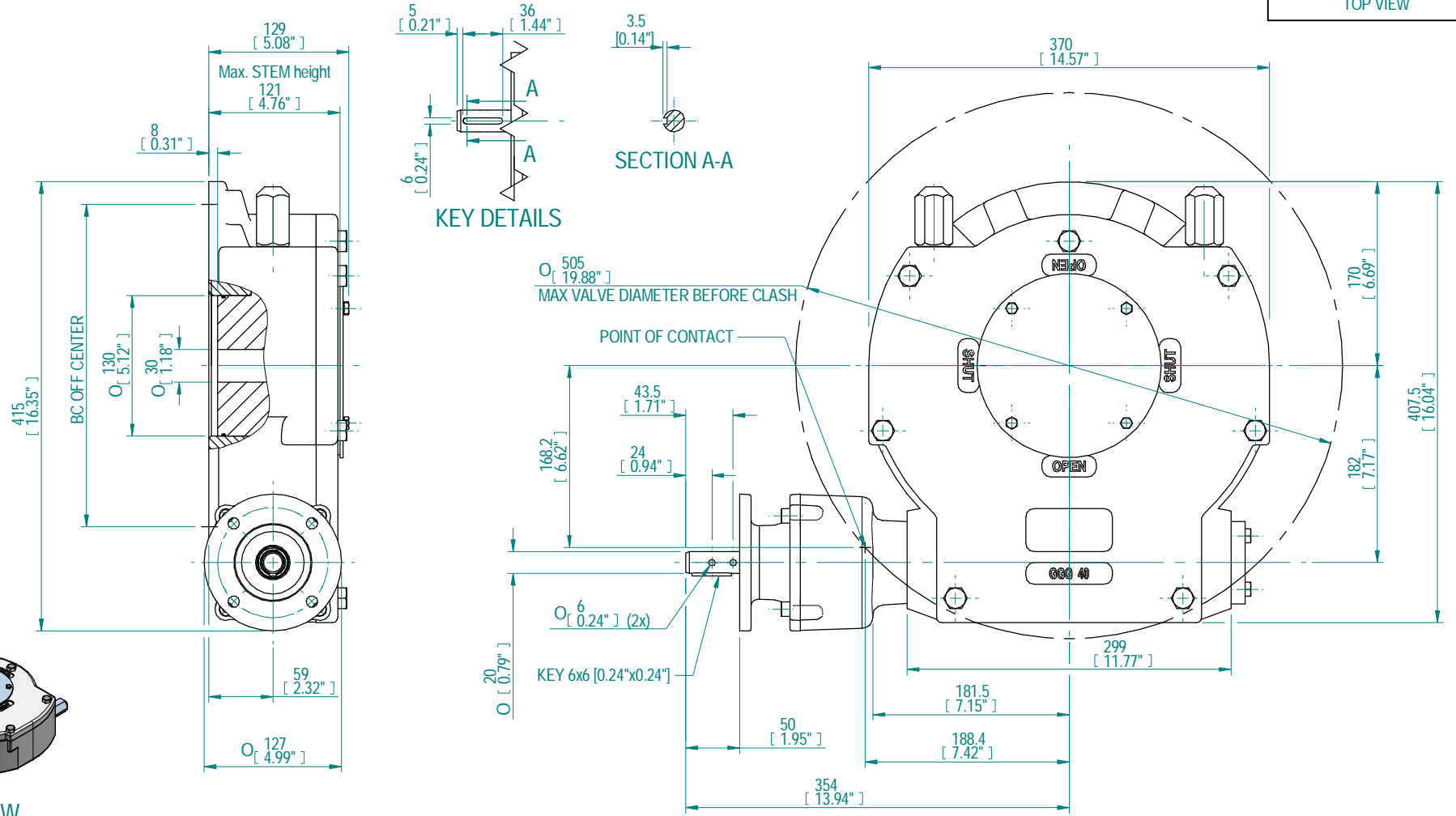
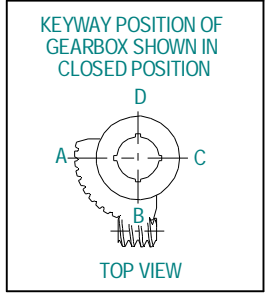


DESCRIPTION				MOUNTING HOLES - BOLT CIRCLE (OFF CENTRES)				BORE; STEM ACCEPTANCE WITH KEYWAY IN ACCORDING WITH STANDARD			TORQUE			
RATIO	TURNS TO CLOSE	TRAVEL (1/4 TURN)	WEIGHT	NR of HOLES	MIN ENVELOP PCD - ØHOLE	MAX ENVELOP PCD + ØHOLE	ACCORDING TO ISO 5211 / MSS SP-101	MIN	MAX	STANDARD	OUTPUT	INPUT	MA	
326:1	81.5	-5° TO 95°	62.5 kg	4	Ø134 mm	Ø335 mm	F16	Ø30 mm	Ø100 mm	DIN 6885-1	12500 Nm	130 Nm	96±15%	
			138 lbs	8	Ø134 mm	Ø335 mm	F25 - F30							
				4	Ø5.28 inch	Ø13.19 inch	FA16							
				8	Ø5.28 inch	Ø13.19 inch	FA25 - FA30	Ø1.18 inch	Ø3.94 inch	ANSI B17.1	110634 lbf.in	1152 lbf.in		



ISOMETRIC VIEW
1:10

Rev	CN	Revised	Approved	Date	Change Description
A				14/11/2013	FIRST ISSUE

AS PART OF CONTINUOUS PRODUCT DEVELOPMENT, ALL DETAILS SUBJECT TO CHANGE WITHOUT PRIOR NOTICE. FOR UP TO DATE DETAILS PLEASE VISIT www.rotork.com

rotork Gears
LOSSER - THE NETHERLANDS
www.rotork.com

This drawing is confidential and is the property of Rotork Gears and must not be reproduced either wholly or partly. All rights in respect of patents, designs and copyrights are reserved. © 2013

Document type	DETAIL DRAWING		Title	E6800G WITH PR4 BU RH PLANETARY GEARBOX- PR4	
	Dimensions in mm		Scale 1:4		
Created	MD RIYAZ	12-11-2013	Drawing Number	E6800G-PR4 BU RH	
Checked	PRABU D	14-11-2013	Rev	A	
Approved			Sheet	1 of 1	Size A3

Rev.01