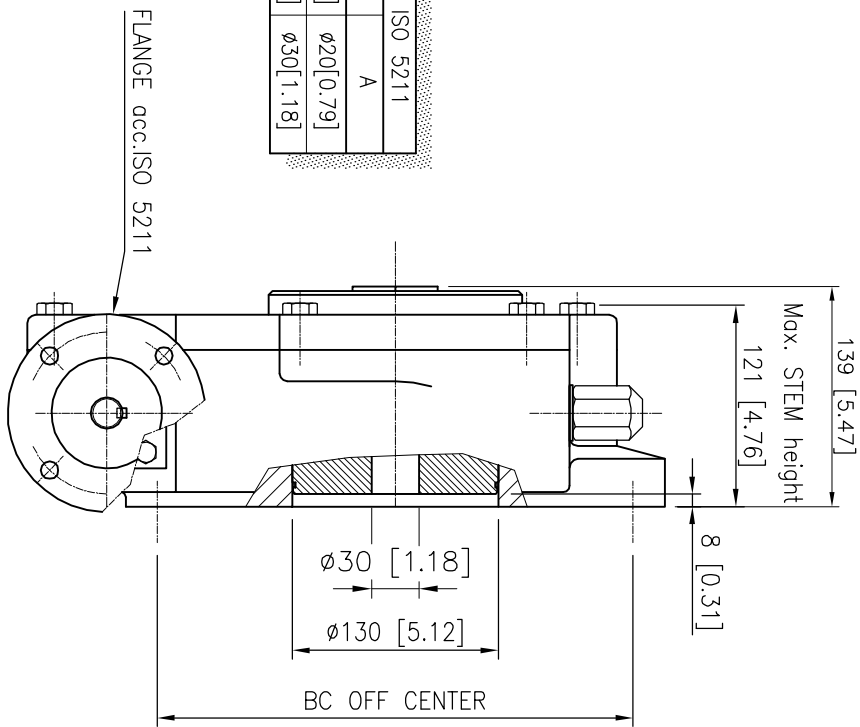


FLANGE TYPE	acc.	ISO 5211
type	KEY	A
F10	6x6 [0.24x0.24]	ø20[0.79]
F14	8x7 [0.35x0.28]	ø30[1.18]



DESCRIPTION

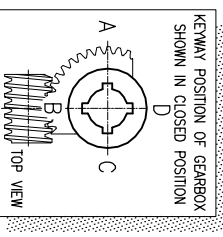
TRAVEL : 90° ±5° AT BOTH ENDS.
 RATIO : 78 : 1
 TURNS TO CLOSE : 19,5
 WEIGHT : 65 kg (143 lb.) exc. handwheel

MOUNTINGHOLES

BOLT CIRCLE : min. ø165 [6.50]
 (OFF CENTER) max. ø298 [11.73]
 acc. ISO 5211 : F16-F25-F30
 BORE : min.ø30[1.18] max.ø100[3.94] #75[2.95]

TORQUE

max.OUTPUT : 8400 Nm (74346 lbf.in.)
 max.INPUT : 305 Nm (2704 lbf.in.)
 M.A. : 27.5 ±15%



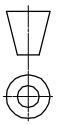
Dimensions in MM [inch]

rotorkgears

Nijverheidstraat 25
 7561 PV, Losser
 The Netherlands

GEARBOX E 6800G / F10-F14

THIS DOCUMENT IS PROPERTY OF ROTORK GEARS. NEITHER THIS OR ITS CONTENT MAY BE COPIED OR USED IN ANY OTHER WAY DETRIMENTAL TO THE INTEREST OF ROTORK GEARS. ACCEPTANCE OF THIS DOCUMENT SHALL CONSTITUTE ACKNOWLEDGEMENT OF THE FOREGOING CONDITIONS



Drawn : H.L

Date : JAN. 2000

Dwg Nr.: D24G-001

Rev.: 04

Contents Subject to change without notice.