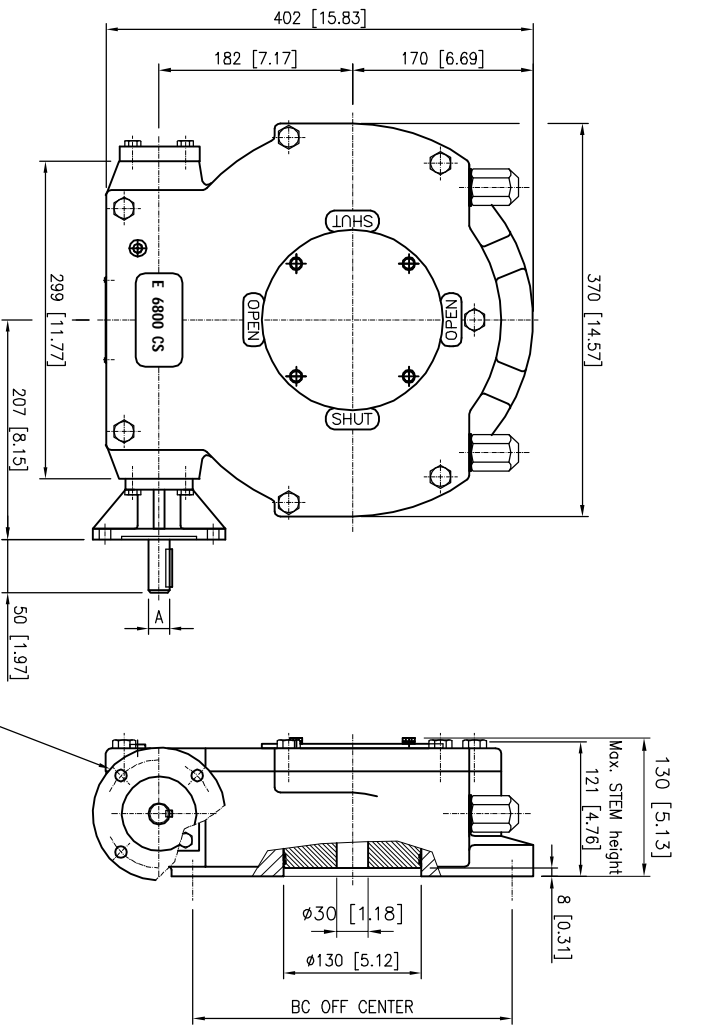


FLANGE TYPE acc. ISO 5211	
type	KEY
F10	6x6 [0.24x0.24]
F14	8x7 [0.35x0.28]
	Ø20[0.79]
	Ø30[1.18]

FLANGE acc. ISO 5211

MOVING INDICATOR



FLANGE TYPE acc. ISO 5211	
type	KEY
F10	6x6 [0.24x0.24]
F14	8x7 [0.35x0.28]
	Ø20[0.79]
	Ø30[1.18]

FLANGE acc. ISO 5211

NON MOVING INDICATOR

DESCRIPTION

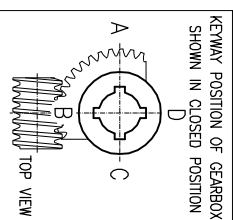
TRAVEL : 90° ±5° AT BOTH ENDS.
 RATIO : 78 : 1
 TURNS TO CLOSE : 19,5
 WEIGHT : 65 kg.(143 lb.) excl.handwheel

MOUNTINGHOLES

BOLT CIRCLE : min. Ø165 [6.50]
 (OFF CENTER) max. Ø298 [11.73]
 acc. ISO 5211 : F16-F25-F30
 BORE : min. 30[1.18] max. Ø100[3.94] #75[2.95]

TORQUE

max.OUTPUT : 8400 Nm (74346 lb.f.in.)
 max.INPUT : 305 Nm (2704 lb.f.in.)
 M.A. : 27.5 ±15%



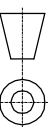
Dimensions in MM [inch]

rotork gears

Nijenheidestraat 25
 72581 PV Losser
 The Netherlands

GEARBOX E 6800 CS F10-F14 L

THIS DOCUMENT IS PROPERTY OF ROTORK GEARS. NEITHER THIS OR ITS CONTENT MAY BE COPIED OR USED IN ANY OTHER WAY WITHOUT THE EXPRESS WRITTEN PERMISSION OF ROTORK GEARS. IN THE INTEREST OF ROTORK GEARS, ASSESSMENT OF THIS DOCUMENT SHALL CONSTITUTE A KNOWLEDGEABLEMENT OF THE PERSONS CONVICTIONS



Drawn : B.H

Date : 20-07-2011

Dwg Nr.: E 6800 CS F10-F14 L

Rev.: 00