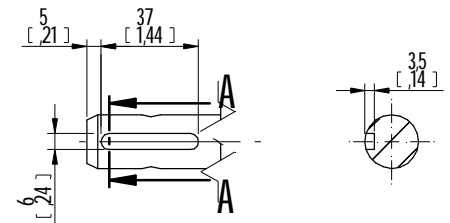
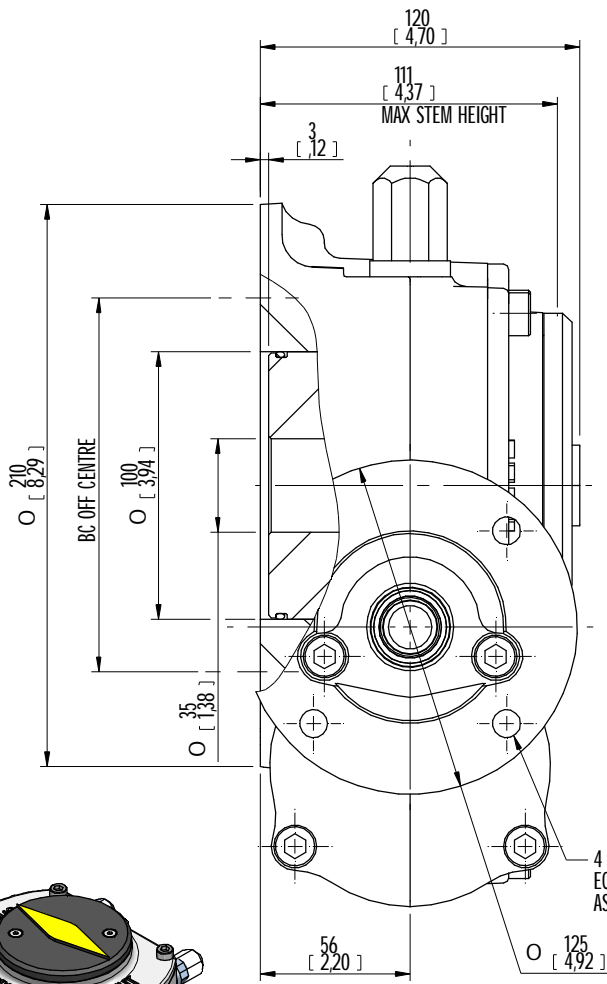
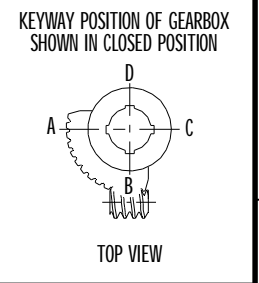
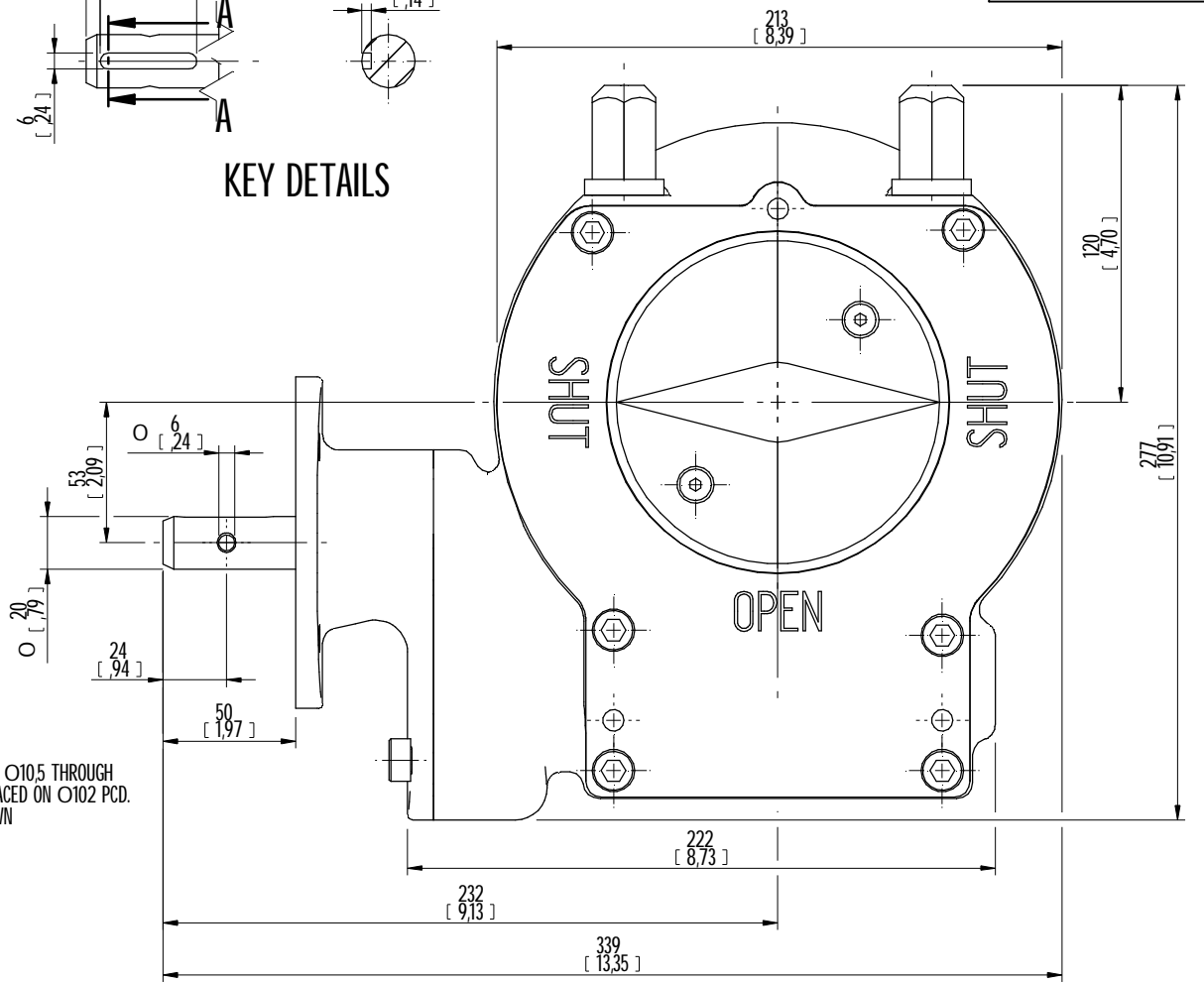


DESCRIPTION				MOUNTING HOLES - BOLT CIRCLE (OFF CENTRES)			BORE: STEM ACCEPTANCE WITH KEYWAY IN ACCORDING WITH STANDARD			TORQUE			
RATIO	TURNS TO CLOSE	TRAVEL (1/4 TURN)	WEIGHT	NR OF HOLES	MIN PCD - ØHOLE	MAX PCD + ØHOLE	ACCORDING TO ISO 5211 - F14 - F16	MIN	MAX	STANDARD	OUTPUT	INPUT	MA
109:1	27	-5° TO 95°	28 kg	4	Ø104 mm	Ø195 mm	F12 - F14 - F16	Ø35 mm	Ø90 mm	ISO 773 A	4500 Nm	136 Nm	33 ± 15%
				8	N.A.	N.A.							
			61 lbs	4	Ø4.09 inch	Ø7.67 inch	FA12 - FA14 - FA16						
				8	N.A.	N.A.							

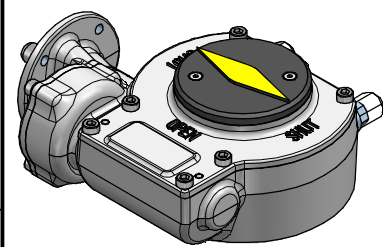
AS PART OF CONTINUOUS PRODUCT DEVELOPMENT, ALL DETAILS SUBJECT TO CHANGE WITHOUT PRIOR NOTICE. FOR UP TO DATE DETAILS PLEASE VISIT www.rotork.com



KEY DETAILS



4 HOLES Ø10,5 THROUGH EQUI SPACED ON Ø102 PCD. AS SHOWN



ISOMETRIC VIEW
1:5

	Document type DETAIL DRAWING	Title E2000 E2000 W-TYPE ASSEMBLY F16 BASE, RH PROJECTION WITH E-FLANGE	
		Dimensions in mm Scale 1:2	
Created M R	13-12-2012	Drawing Number E2000W RH	
Checked P LINE	28-2-2013	Rev A	
Approved -	DD-YYYY	Sheet 1 of 3	Size A3

00				DD-MMM-YYYY	FIRST ISSUE
Rev	CN	Revised	Approved	Date	Change Description

Rev 01