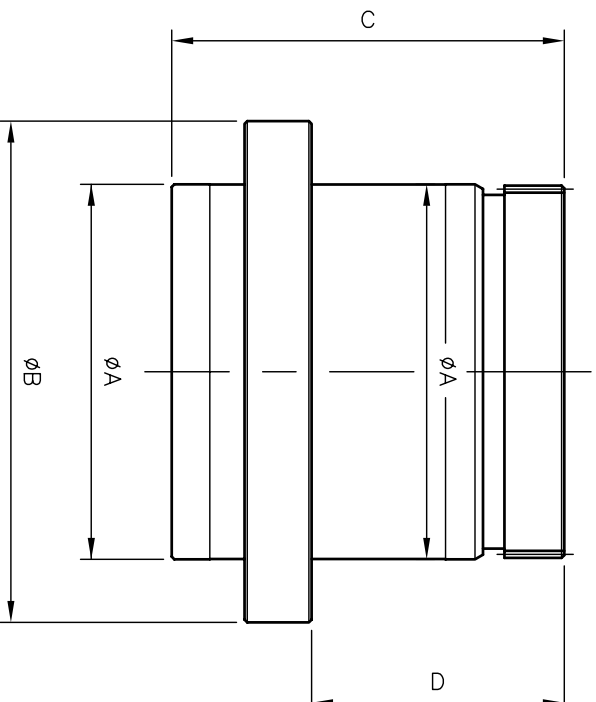


# OSDIM

ISSUE	ALTERATIONS
A	ORIGINAL ISSUE



GEARBOXES	øA	øB	C	D
IB1	38 [1.50"]	53 [2.08"]	50 [1.96"]	33 [1.27"]
IB2/IB4/IS2/IS4/HOB210/HOB410	55 [2.16"]	76 [3.00"]	55 [2.15"]	38 [1.50"]
IB3/IB5/IB6/IS3/IS5/IS6/HOB414	70 [2.75"]	93 [3.67"]	73 [2.88"]	47 [1.85"]
IB7/IB8/IS7/IS8/HOB616	90 [3.54"]	120 [4.71"]	86 [3.39"]	54 [2.14"]
IB9/IB10/IS9/IS10	110 [4.33"]	145 [5.70"]	96 [3.78"]	64 [2.53"]
IB11/IB12/IS11/IS12	130 [5.11"]	170 [6.68"]	113 [4.46"]	77 [3.04"]
IB13/IS13/IS15/IS17	160 [6.29"]	200 [7.86"]	150 [5.91"]	89 [3.51"]
IB14/IS14/IS16/IS18	170 [6.68"]	210 [8.26"]	260 [10.23"]	153 [6.03"]
IS19	219 [8.64"]	265 [10.42"]	290 [11.41"]	171 [6.74"]
IS20	279 [10.99"]	340 [13.38"]	349 [13.73"]	199 [7.83"]

MATERIAL: - NOT TO BE USED FOR MANUFACTURING PURPOSES

PROJECT: - MULTI-TURN GEARBOX OUTPUT SLEEVE DIMENSIONS

DRAWN: - SW 31.10.01  
CHECKED: -

SCALE  
NTS

OUTPUT SLEEVES

OSDIM

EXECCO LTD  
REGINA HOUSE  
RING ROAD  
BRAMLEY  
LEEDS  
WEST YORKSHIRE