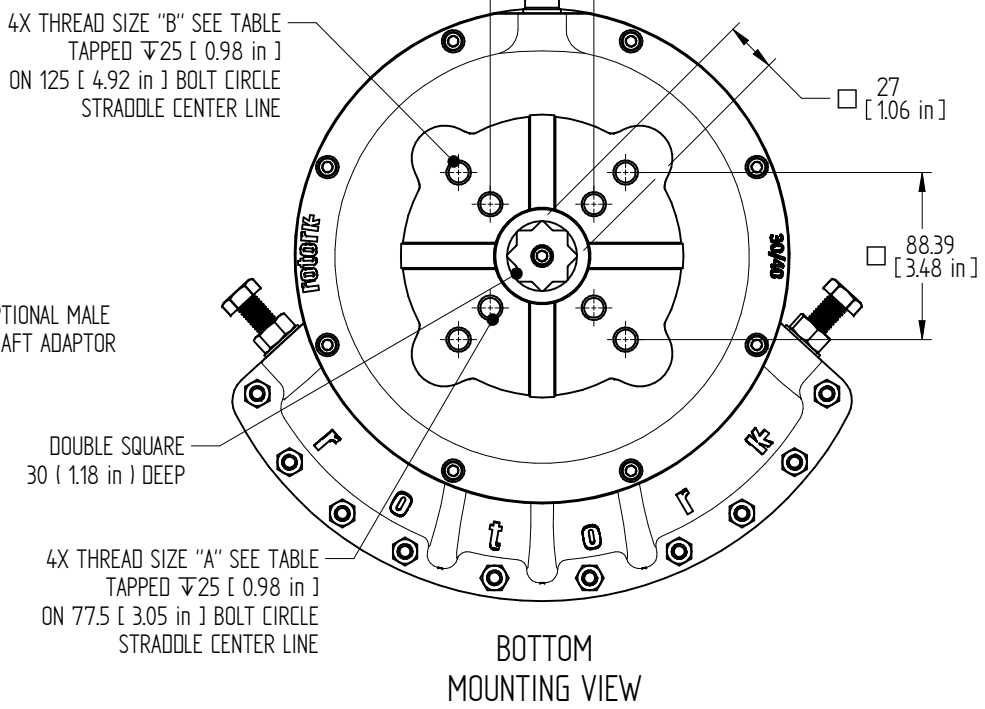
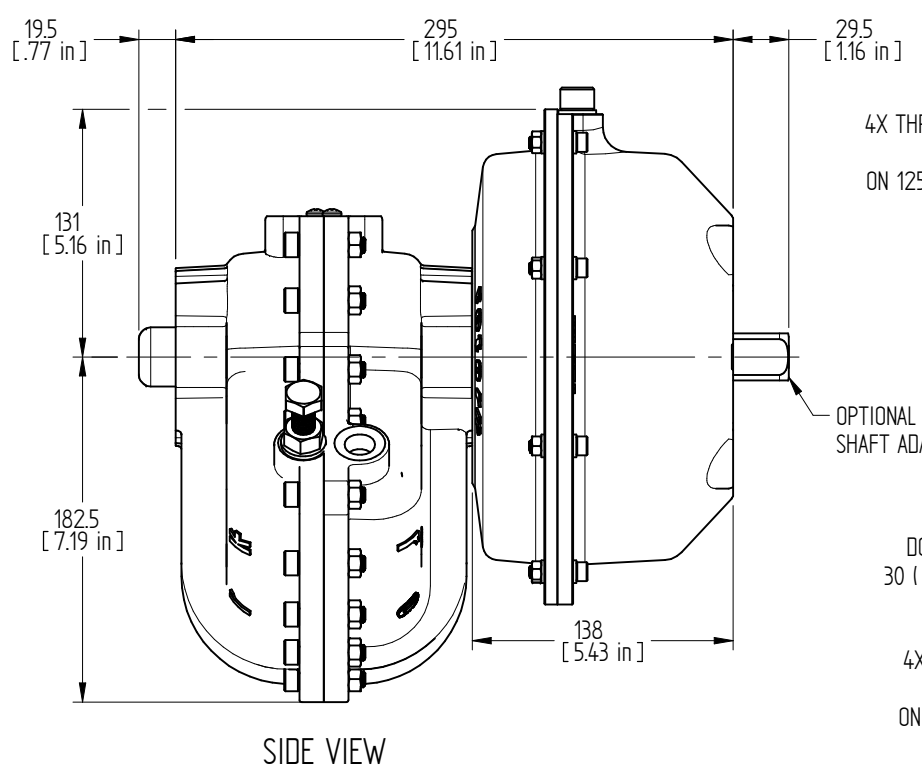
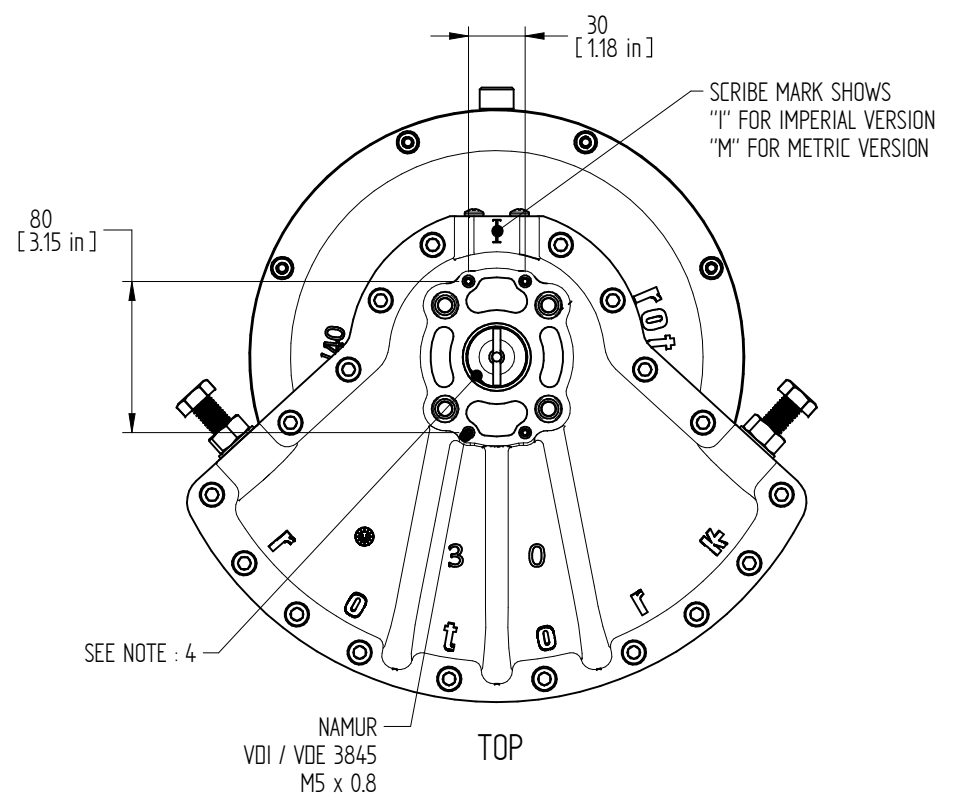
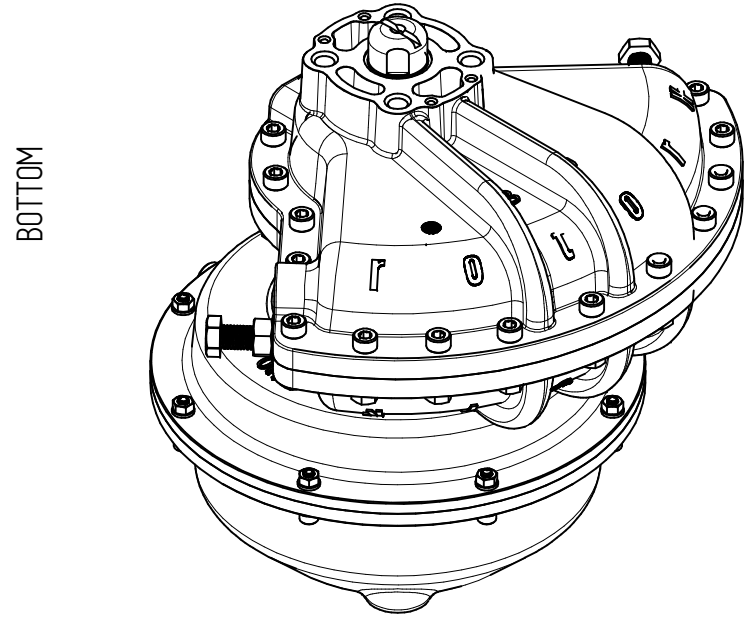
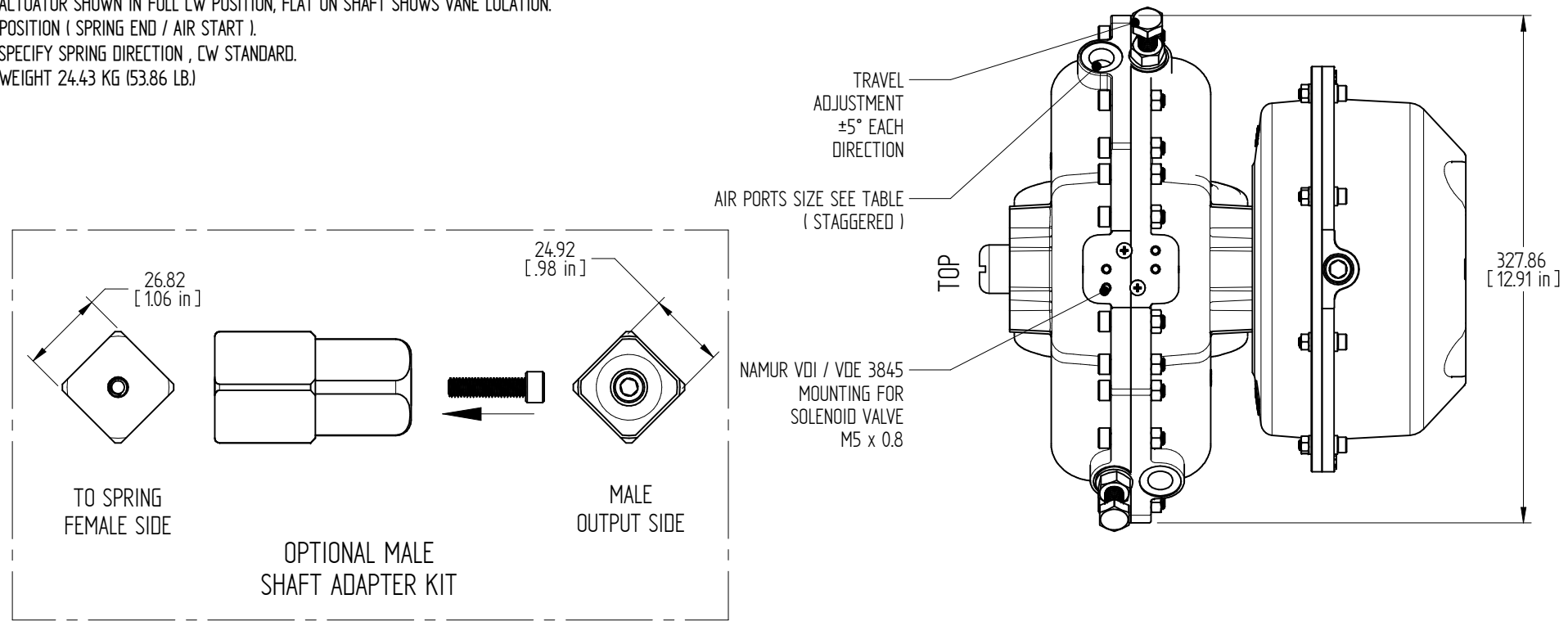


NOTES:

1. MAX. ALLOWABLE OPERATING PRESSURE ( MAOP ) = 10 BAR ( 150 PSIG )
2. WARNING - SEE ROTORK INSTALLATION, OPERATION & MAINTENANCE MANUAL BEFORE MOUNTING, INSTALLING OR SERVICING.
3. SPECIFY SUPPLY AIR PRESSURE FOR SPRING-RETURN ACTUATORS.
4. ACTUATOR SHOWN IN FULL CW POSITION, FLAT ON SHAFT SHOWS VANE LOCATION POSITION ( SPRING END / AIR START ).
5. SPECIFY SPRING DIRECTION , CW STANDARD.
6. WEIGHT 24.43 KG (53.86 LB.)

	IMPERIAL	METRIC
THREAD SIZE "A"	1/2-13 UNC	M12 x 1.75
THREAD SIZE "B"	1/2-13 UNC	M12 x 1.75
AIR PORT SIZE	3/8-18 NPT	G3/8



Rev	ECN	Revised	Approved	Date	Change Description
D		K.SEKAR	K.PRICE	04-AUG-2016	DIM. 327.86 WAS 337.12 (B6)
C		K.SEKAR	K.PRICE	19-FEB-2016	EXPLODED VIEW ADDED IN SHEET2
B		K.SEKAR	K.PRICE	14-JUL-2015	DESCRIPTION UPDATED
A		K.SEKAR	K.PRICE	12-JUN-2015	REDRAWN: SOLID EDGE 3D

Dallas, Texas - USA  
www.rotork.com

This drawing is confidential and is the property of Rotork Dallas Inc. and must not be reproduced either wholly or partly. All rights in respect of patents, designs and copyrights are reserved. © 2015

Document type: GENERAL ARRANGEMENT

Dimensions in mm

Scale: 1:4

Created: K.SEKAR, 12-JUN-2015

Checked: S.SUDHIR, 12-JUN-2015

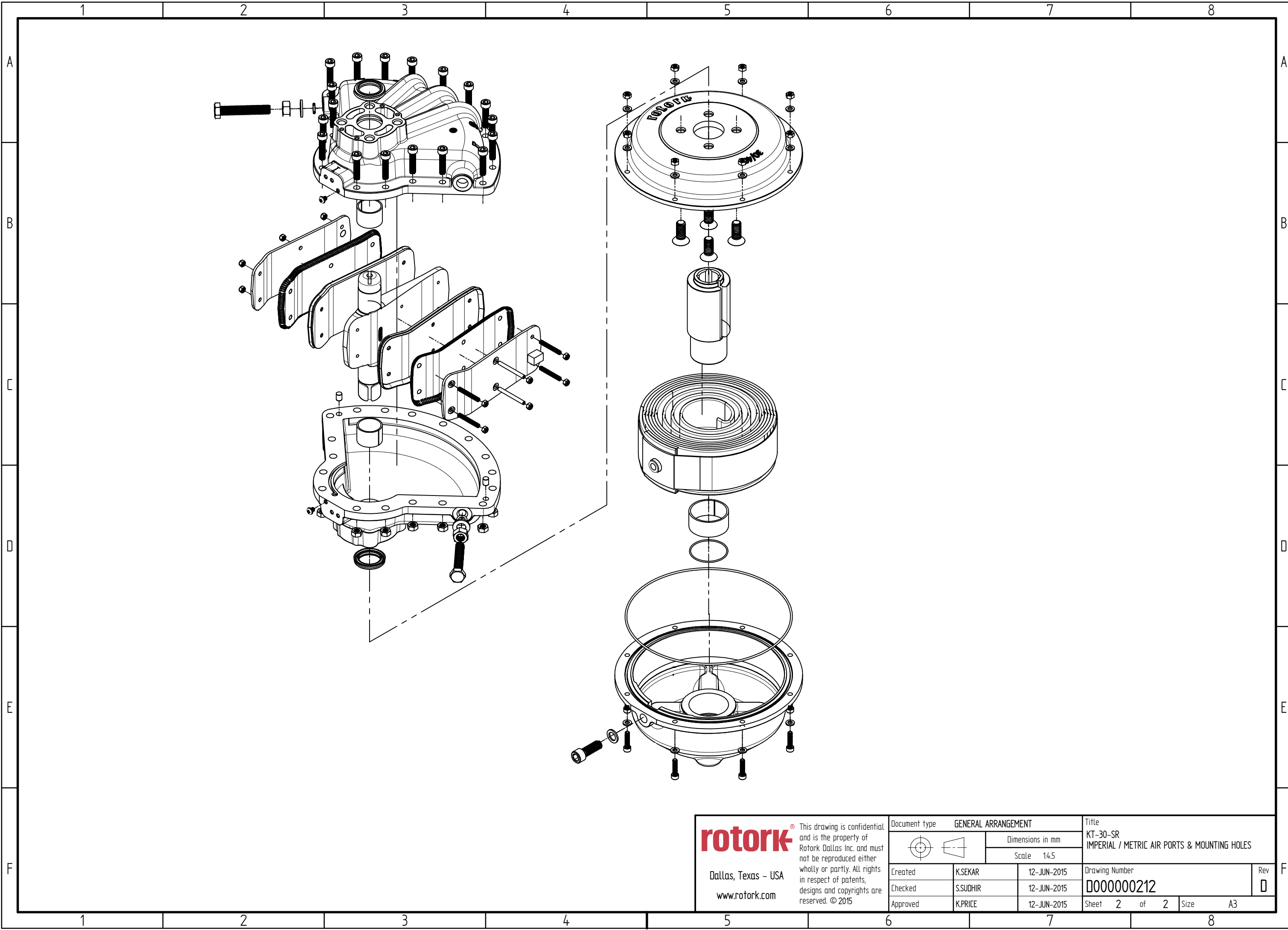
Approved: K.PRICE, 12-JUN-2015

Title: KT-30-SR IMPERIAL / METRIC AIR PORTS & MOUNTING HOLES

Drawing Number: 000000212

Sheet 1 of 2

Size: A3



**rotork**® This drawing is confidential and is the property of Rotork Dallas Inc. and must not be reproduced either wholly or partly. All rights in respect of patents, designs and copyrights are reserved. © 2015

Dallas, Texas - USA  
www.rotork.com

Document type		GENERAL ARRANGEMENT		Title	
		Dimensions in mm		KT-30-SR IMPERIAL / METRIC AIR PORTS & MOUNTING HOLES	
		Scale 14.5			
Created	K.SEKAR	12-JUN-2015	Drawing Number		Rev
Checked	S.SUDHIR	12-JUN-2015	000000212		D
Approved	K.PRICE	12-JUN-2015	Sheet 2 of 2	Size A3	

Rev. C