

- NOTES:
- 1) MAX ALLOWABLE OPERATING PRESSURE (MAOP) = 10 BAR (150 PSIG)
  - 2) WARNING - SEE K-TORK INSTALLATION, OPERATION & MAINTENANCE MANUAL BEFORE MOUNTING, INSTALLING OR SERVICING.
  - 3) ACTUATOR SHOWN IN FULL CW POSITION, SCRIBE ON SHAFT SHOWS VANE LOCATION.
  - 4) WEIGHT 47.63 kg (105 LB.)
  - 5) RESTRICTED TRAVEL VERSIONS OPTIONAL.

AIR PORTS  
1/2" NPT  
(STAGGERED)

TRAVEL  
ADJUSTMENT  
+/- 5° EACH  
DIRECTION  
  
SEE NOTE: 5

SIDE VIEW

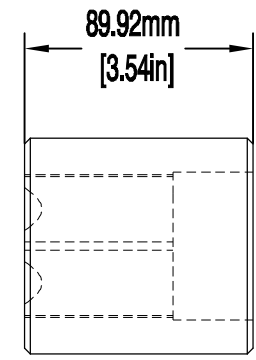
SIDE VIEW

TOP

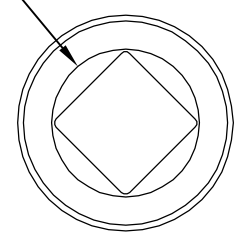
BOTTOM  
MOUNTING VIEW

OPTIONAL COUPLING,  
MILD STEEL

Ø84.94mm  
[Ø3.34in]



(Ø58.17mm  
[Ø2.29in])



BROACHED TO FIT BOTTOM DRIVE SHAFT

NAMUR  
VDI/VDE 3845  
M5 x .8

(4 PLACES)  
7/8-9 UNC-2B  
TAPPED 41.4 (1.63in) DEEP,  
152.9mm (6.02in) BOLT CIRCLE STRADDLE  $\phi$

**K-TORK**  
ACTUATORS + CONTROLS  
  
Texas - USA  
[www.rotork.com](http://www.rotork.com)

This drawing is confidential and is the property of Rotork Dallas Inc. and must not be reproduced either wholly or partly. All rights in respect of patents, designs and copyrights are reserved. © 2015

Document type	DETAIL DRAWING	
	Dimensions in mm	
	Scale 1:1	
Created	S.DINESH	30-JAN-2015
Checked	S.SUDHIR	30-JAN-2015
Approved	K.PRICE	30-JAN-2015

Title		K-5 DOUBLE-ACTING MODEL IMPERIAL AIR PORTS & MOUNTING HOLES	
Drawing Number		D000000206	
Rev	0	Sheet	1 of 1
Size	A3		

Rev B