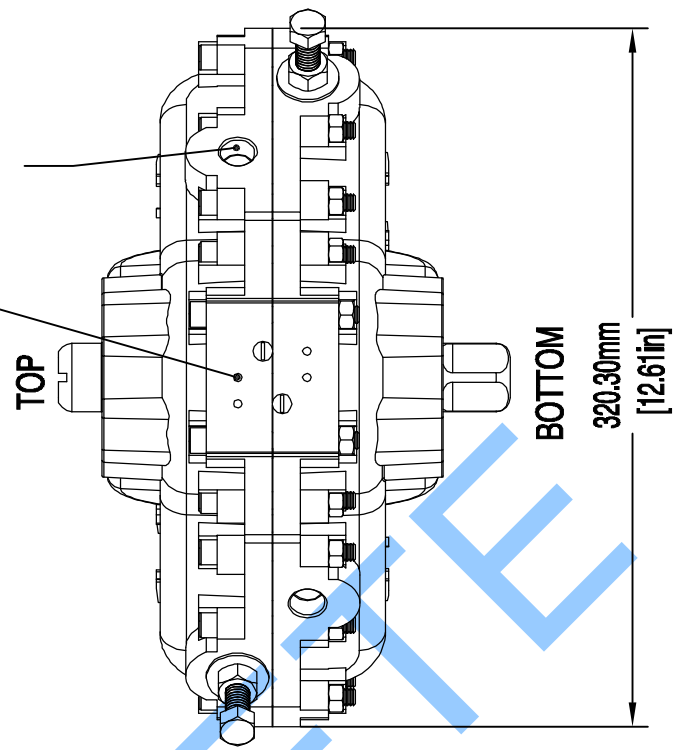


NAMUR VDI/VDE 3845
MOUNTING FOR SOLENOID VALVE
10-24 UNC

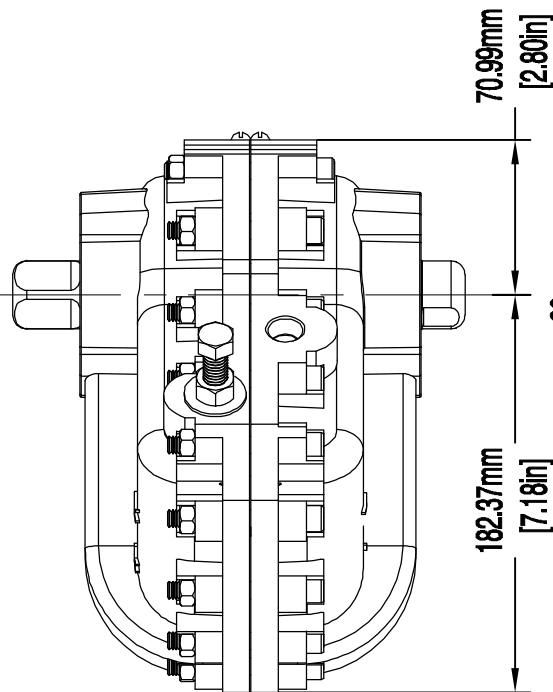
AIR PORTS
3/8" NPT
(STAGGERED)



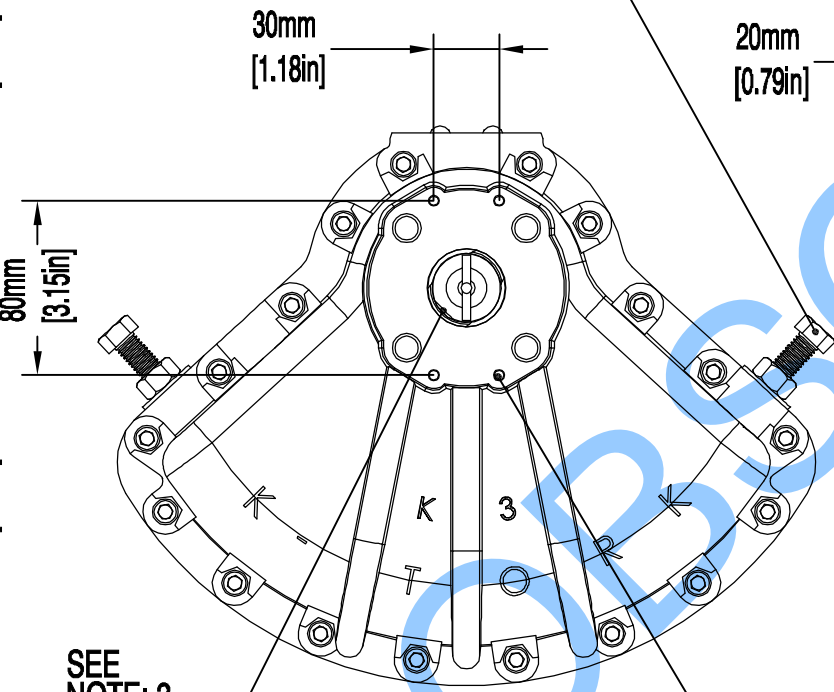
TRAVEL
ADJUSTMENT
+/- 5° EACH
DIRECTION

SEE NOTE: 5

- NOTES:
- 1) MAX ALLOWABLE OPERATING PRESSURE (MAOP) = 10 BAR (150 PSIG)
 - 2) WARNING - SEE K-TORK INSTALLATION, OPERATION & MAINTENANCE MANUAL BEFORE MOUNTING, INSTALLING OR SERVICING.
 - 3) ACTUATOR SHOWN IN FULL CW POSITION, SCRIBE ON SHAFT SHOWS VANE LOCATION.
 - 4) WEIGHT 9.82 kg (21.66 LB.)
 - 5) RESTRICTED TRAVEL VERSIONS OPTIONAL.

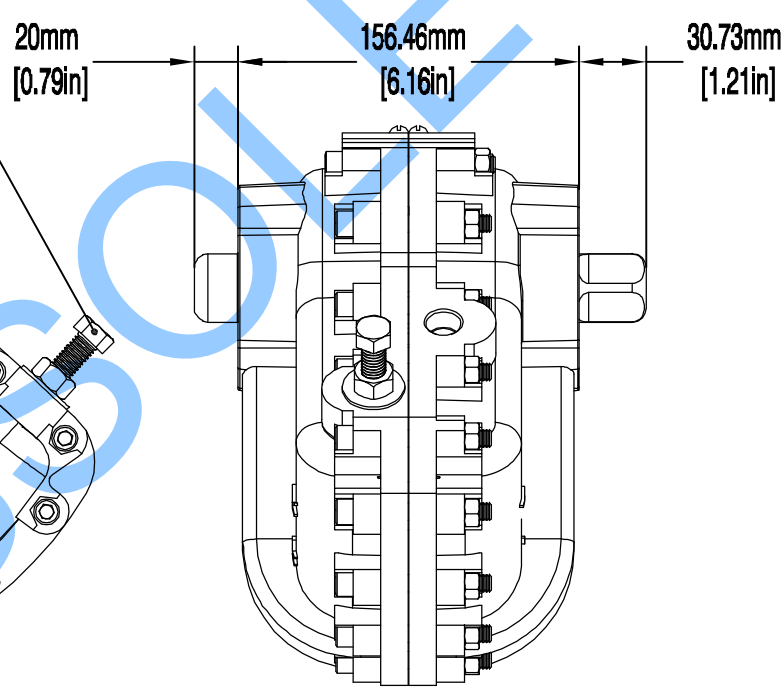


SIDE VIEW

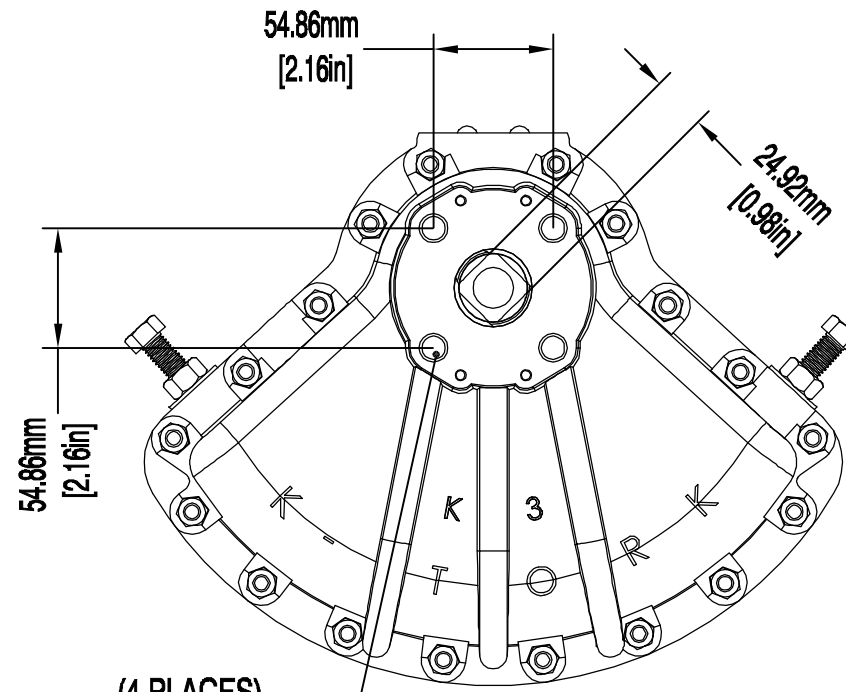


SEE NOTE: 3

NAMUR
VDI/VDE 3845
M5 x .8



SIDE VIEW

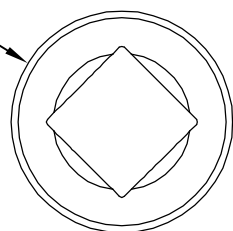


(4 PLACES)
1/2-13 UNC-2B
TAPPED 23.9mm (.94in) DEEP,
77.5mm (3.05in) BOLT CIRCLE STRADDLE \varnothing

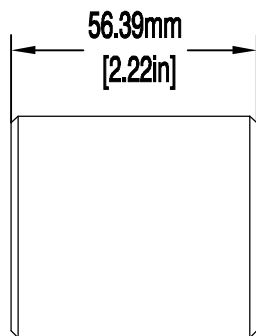
BOTTOM
MOUNTING VIEW

OPTIONAL COUPLING,
MILD STEEL

Ø50.80mm
[Ø2.00in]


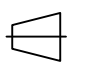


BROACHED TO FIT BOTTOM DRIVE SHAFT



Texas - USA
www.rotork.com

This drawing is confidential and is the property of Rotork Dallas Inc. and must not be reproduced either wholly or partly. All rights in respect of patents, designs and copyrights are reserved. © 2015

Document type	DETAIL DRAWING		Title	
	 		K-3-DOUBLE-ACTING MODEL IMPERIAL AIR PORTS & MOUNTING HOLES	
	Dimensions in mm		Scale 1:1	
Created	S.DINESH	30-JAN-2015	Drawing Number	Rev
Checked	S.SUDHIR	30-JAN-2015	D000000204	0
Approved	K.PRICE	30-JAN-2015	Sheet 1 of 1	Size A3