

- NOTES:
- 1) MAX ALLOWABLE OPERATING PRESSURE (MAOP) = 10 BAR (150 PSIG)
  - 2) WARNING - SEE K-TORK INSTALLATION, OPERATION & MAINTENANCE MANUAL BEFORE MOUNTING, INSTALLING OR SERVICING.
  - 3) ACTUATOR SHOWN IN FULL CW POSITION, SCRIBE ON SHAFT SHOWS VANE LOCATION.
  - 4) WEIGHT 2.7 KG (6 LB.)
  - 5) RESTRICTED TRAVEL VERSIONS OPTIONAL.

AIR PORTS  
1/4" NPT  
(STAGGERED)

NAMUR VDI/DE 3845  
MOUNTING FOR SOLENOID VALVE  
10-24 UNC

TOP

BOTTOM

203.69mm  
[8.02in]

TRAVEL  
ADJUSTMENT  
+/- 5 ° EACH  
DIRECTION

SEE NOTE: 5

30mm  
[1.18in]

20mm  
[0.79in]

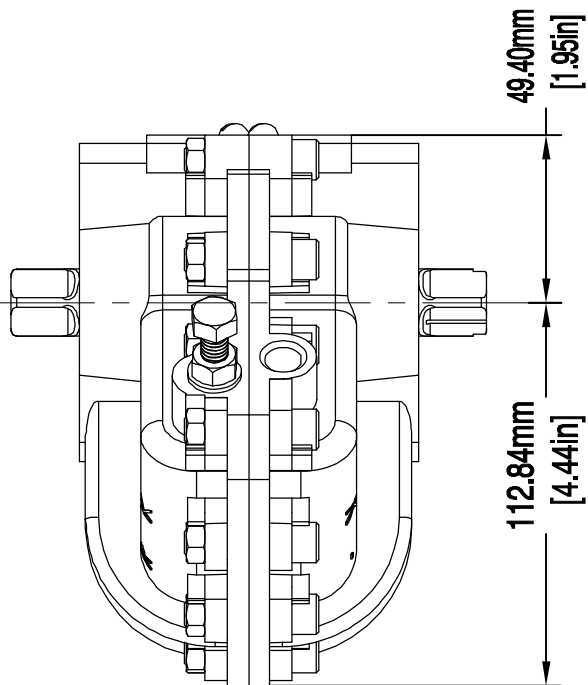
100.08mm  
[3.94in]

20.02mm  
[0.79in]

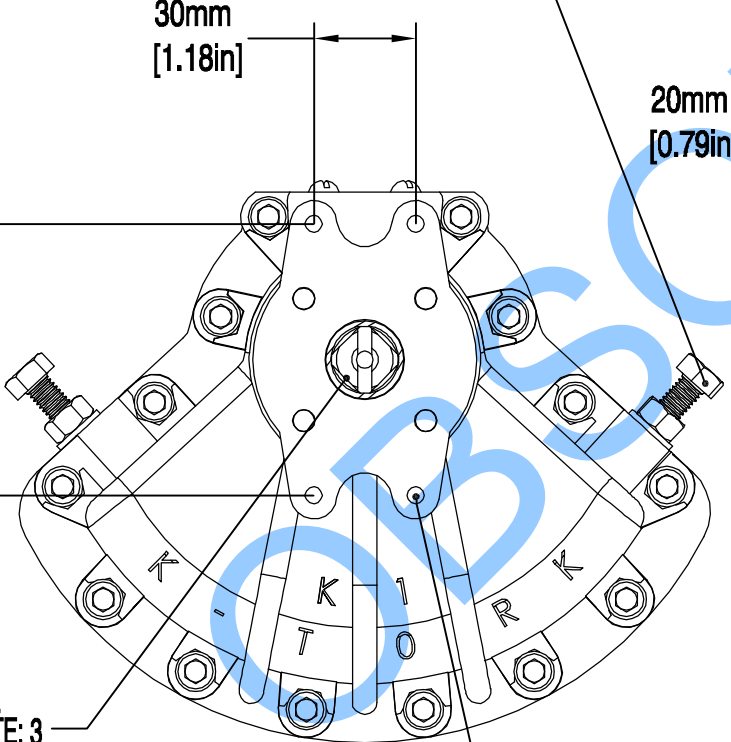
35.97mm  
[1.42in]

15.91mm  
[0.63in]

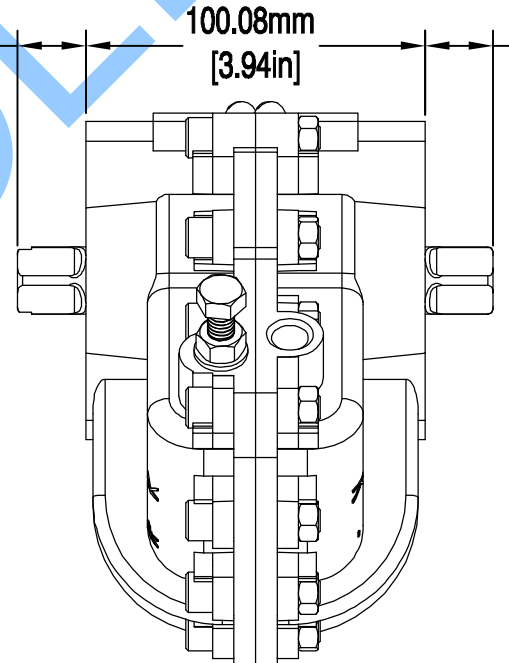
35.97mm  
[1.42in]



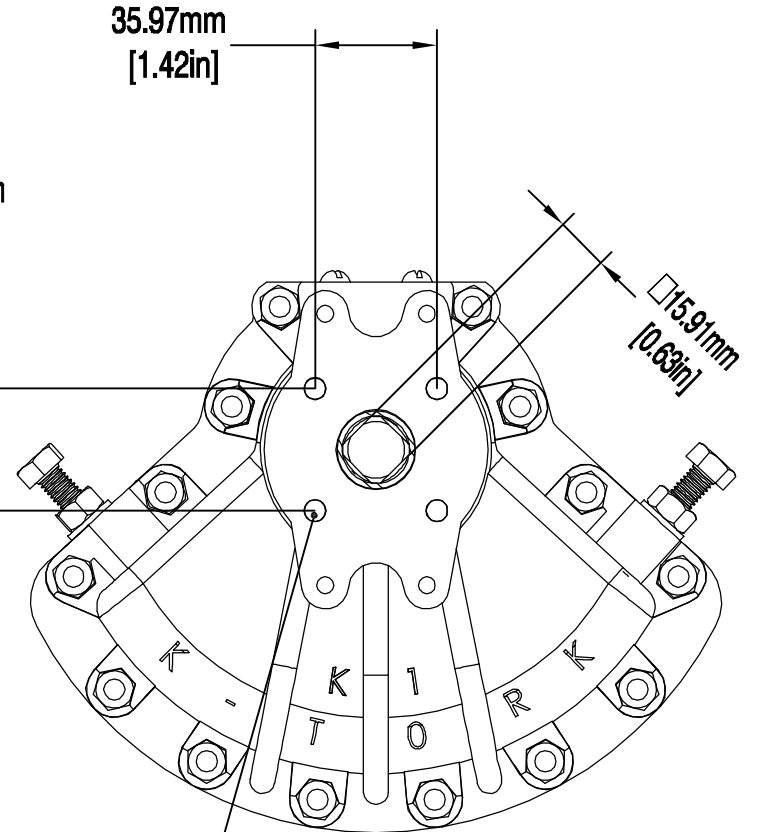
SIDE VIEW



TOP

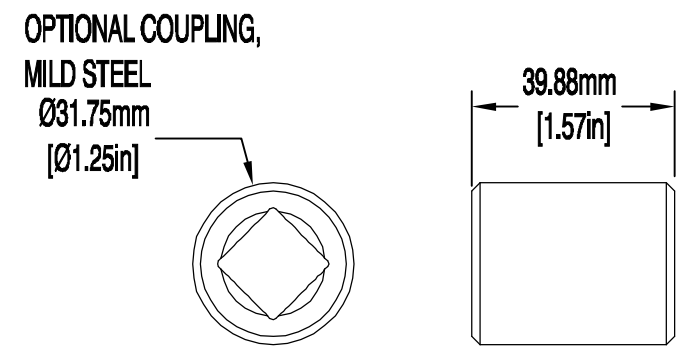


SIDE VIEW



BOTTOM  
MOUNTING VIEW

(4 PLACES)  
5/16-18 UNC-2B  
TAPPED 15.7mm (.62in) DEEP,  
51.1mm (2.01in) BOLT CIRCLE STRADDLE



BROACHED TO FIT BOTTOM DRIVE SHAFT

SEE NOTE: 3

NAMUR  
VDI/DE 3845  
M5 x .8

**K-TORK**  
ACTUATORS + CONTROLS

Texas - USA  
[www.rotork.com](http://www.rotork.com)

This drawing is confidential and is the property of Rotork Dallas Inc. and must not be reproduced either wholly or partly. All rights in respect of patents, designs and copyrights are reserved. © 2015

Document type	DETAIL DRAWING	
	Dimensions in mm	
	Scale 1:1	
Created	S.DINESH	30-JAN-2015
Checked	S.SUDHIR	30-JAN-2015
Approved	K.PRICE	30-JAN-2015

Title		K-1 DOUBLE-ACTING MODEL IMPERIAL AIR PORTS & MOUNTING HOLES	
Drawing Number		D000000202	
Sheet	1	of	1
Size	A3		
Rev	0		