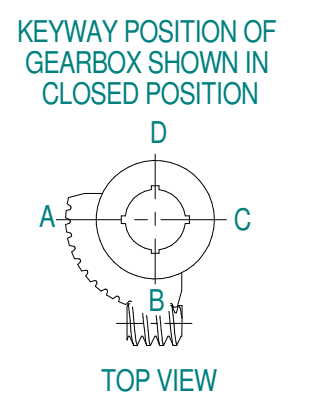
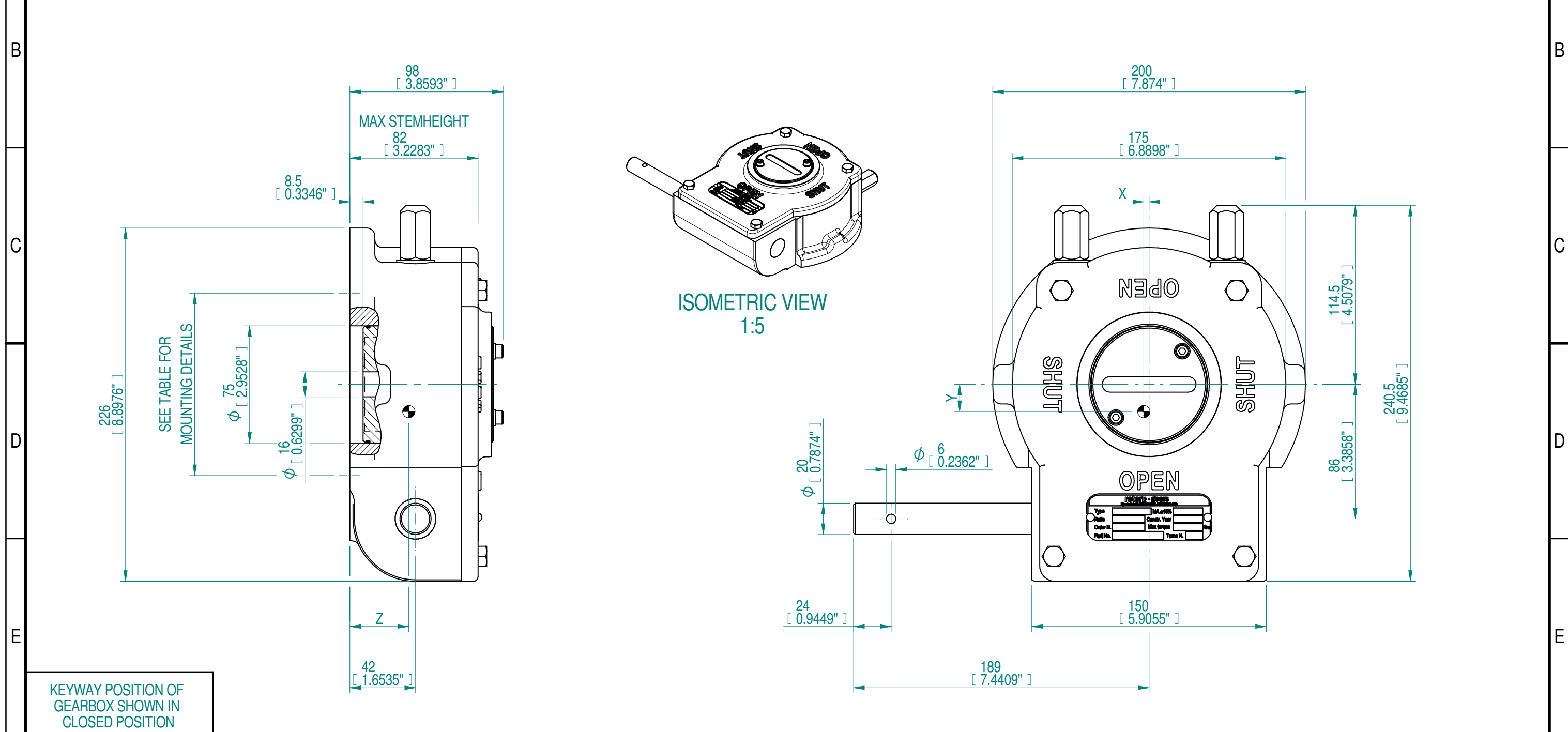


INPUT FLANGE DETAILS				MOUNTING HOLES - BOLT CIRCLE (OFF CENTRES)				STEM ACCEPTANCE IN ACCORDANCE TO STANDARD					
INPUT FLANGE	FLANGE O/DIA.	HOLE DETAILS (OFF CENTRES)	KEY DETAILS	ISO 5211 / MSS SP-101 MOUNTING OPTION	HOLE DETAILS (OFF CENTRES)	MAX OUTSIDE DIA. INCLUDING DRILLED HOLES	MIN INSIDE DIA. INCLUDING DRILLED HOLES	BORE MACHINED IN	STANDARD	MIN BORE	RECT. KEY MAX BORE	RECT. KEY SIZE	SQ BORE MAX
-	-	-	-	F10 (FA10)	4x M10* x 13 DEEP ON A Ø102P.C. (4x 3/8"UNC x 0.51" DEEP ON A Ø4"P.C.)	Ø195 (Ø7.68")	Ø79 (Ø3.11")	QUADRANT	DIN 6885	Ø16	Ø60	18 x 11	□ 46
				BS46	Ø0.63"				Ø2.3592"	5/8 x 7/16	□ 1.81"		
				INSERT	DIN 6885			-	Ø40	12 x 9	□ 36		
					BS46			-	Ø1.5733"	7/16 x 5/16	□ 1.42"		



NOTES:  
 1. \* THREAD DEPTH DOES NOT MATCH ISO STANDARD  
 2. CENTRE OF GRAVITY POSITION IS INDICATIVE FOR STANDARD BUILD WHEN IN POSITION SHOWN

RATIO	TURNS TO CLOSE	M.A.	WEIGHT EXCL. HW	MAX OUTPUT	MAX INPUT	X	Y	Z
38 : 1	9.5	13.2 ± 15%	16 kg 35 lbs.	2000 Nm 17701 lbf.in.	152 Nm 1341 lbf.in.	1.1 0.04"	17.4 0.69"	37.8 1.49"
DESCRIPTION			TORQUE			CENTRE OF GRAVITY		

AS PART OF CONTINUOUS PRODUCT DEVELOPMENT, ALL DETAILS SUBJECT TO CHANGE WITHOUT PRIOR NOTICE. FOR UP TO DATE DETAILS PLEASE VISIT [www.rotork.com](http://www.rotork.com)

**rotork** Gears  
 LOSSER - THE NETHERLANDS  
[www.rotork.com](http://www.rotork.com)

This drawing is confidential and is the property of Rotork Gears and must not be reproduced either wholly or partly. All rights in respect of patents, designs and copyrights are reserved. © 2018

Document Type	GAD	Title	GEARBOX AB880SS RIGHT HANDED WITHOUT BORE AND PCD	
Created	robbin.goosen	4-7-2018	Drawing Number	PUB00115
Checked	Henk Hoff	4-7-2018	Iss.	01
Approved			Sheet	1 of 1
			Size	A3