

DESCRIPTION:

TRAVEL : -5° TO 95° adjustable
 RATIO : 326 : 1
 TURNS TO CLOSE : 81.5
 WEIGHT : 93 kg. (204 lb.) Excl. handwheel

MOUNTING HOLES :

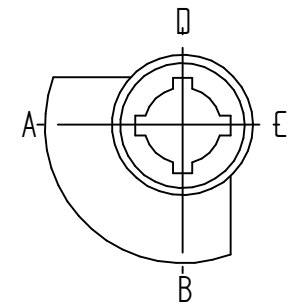
BOLT CIRCLE : min. Ø 165 [6.50]
 (OFF CENTER) : max. Ø 356 [14.02]
 acc. ISO 5211 : F16 - F25 - F30 - F35
 Min. bore Quadrant : Ø 30 [1.18]
 MAX. bore Quadrant : ∇ 75 [2.95] or Ø 100 [3.94]

TORQUE :

max. OUTPUT : 12500 Nm (110634 lbf.in.)
 max. INPUT : 130 Nm (1152 lbf.in.)
 MA : 96.0 ± 15%

DIMENSIONS IN MM [INCH]

KEYWAY POSITION OF GEARBOX SHOWN IN CLOSED POSITION



ROTORK GEARS

GEARBOX AB6800W-PR4 LB

DRAWN:- Robbin Goosen CHECKED:- Henk Hoff

DWG:- AB6800W-PR4 LB REV: 01