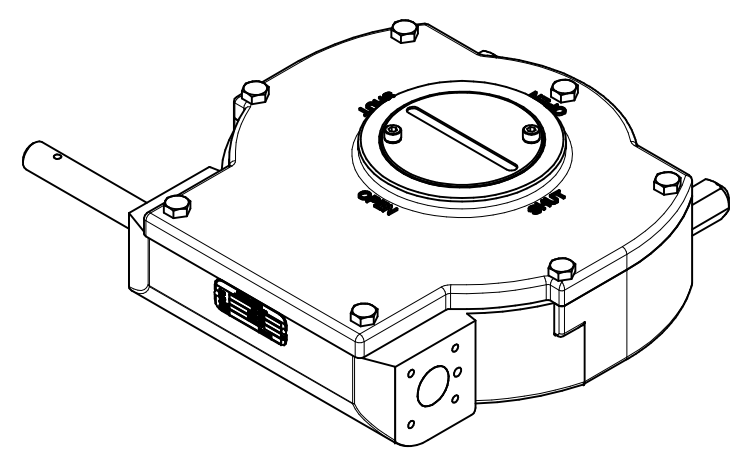
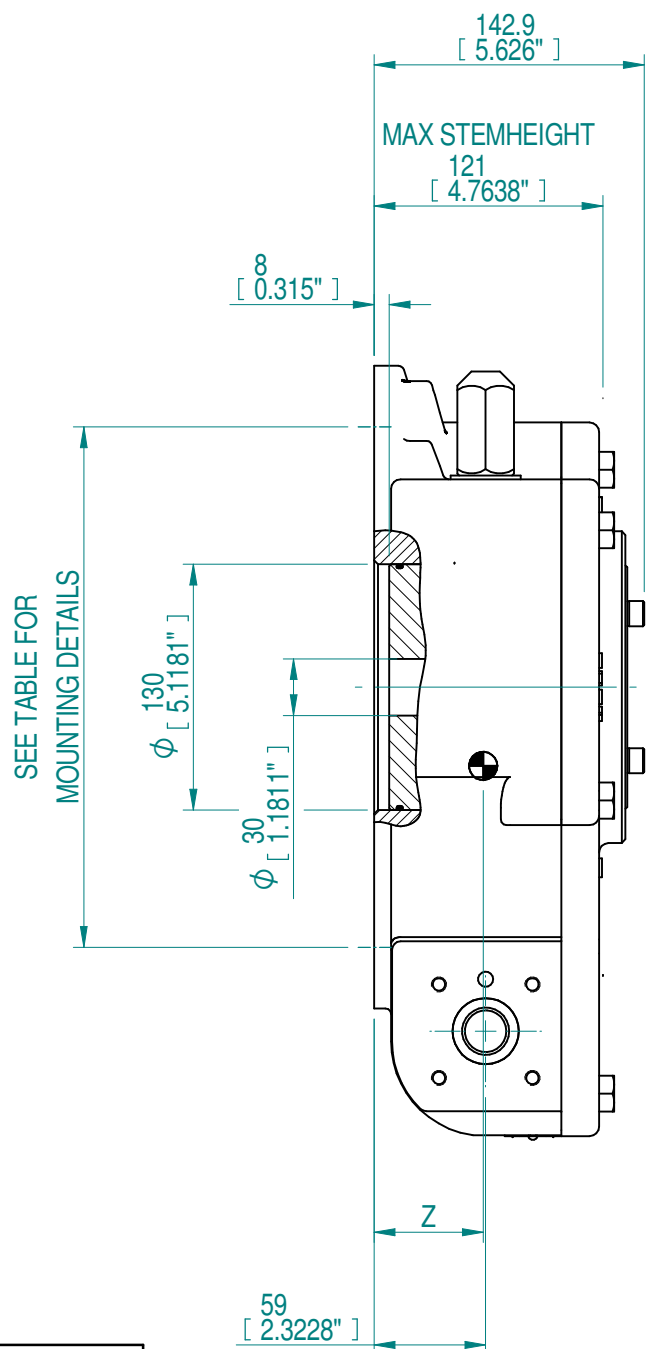
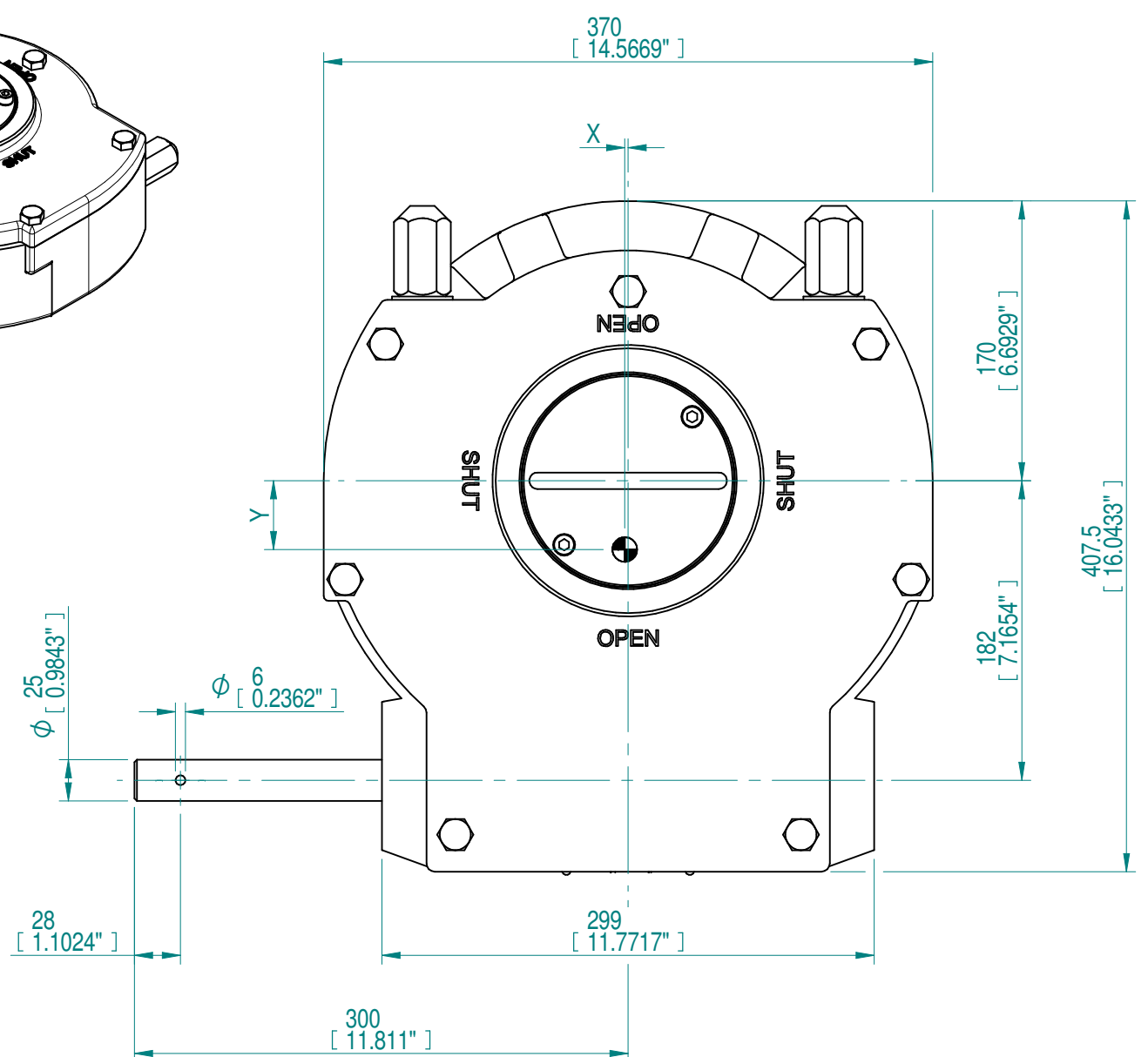


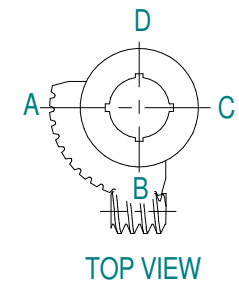
INPUT FLANGE DETAILS				MOUNTING HOLES - BOLT CIRCLE (OFF CENTRES)				STEM ACCEPTANCE IN ACCORDANCE TO STANDARD					
INPUT FLANGE	FLANGE O/DIA.	HOLE DETAILS (OFF CENTRES)	KEY DETAILS	ISO 5211 / MSS SP-101 MOUNTING OPTION	HOLE DETAILS (OFF CENTRES)	MAX OUTSIDE DIA. INCLUDING DRILLED HOLES	MIN INSIDE DIA. INCLUDING DRILLED HOLES	BORE MACHINED IN	STANDARD	MIN BORE	RECT. KEY MAX BORE	RECT. KEY SIZE	SQ BORE MAX
-	-	-	-	F16 (FA16)	4x M20* x 18 DEEP ON A Ø165P.C. (4x 3/4"UNC x 0.71" DEEP ON A 6.5"P.C.)	Ø327 (Ø12.87")	Ø134 (Ø5.28")	QUADRANT	DIN 6885	Ø30	Ø100	28 x 16	□ 75
			F25 (FA25)	8x M16* x 18 DEEP ON A Ø254P.C. (8x 5/8"UNC x 0.71" DEEP ON A 10"P.C.)	BS46				Ø1.18"	Ø3.8291"	1 x 3/4	□ 2.95"	
			F30 (FA30)	8x M20* x 18 DEEP ON A Ø298P.C. (8x 3/4"UNC x 0.71" DEEP ON A 11.75"P.C.)									



ISOMETRIC VIEW
1:6



KEYWAY POSITION OF GEARBOX SHOWN IN CLOSED POSITION



NOTES:
 1. * THREAD DEPTH DOES NOT MATCH ISO STANDARD
 2. CENTRE OF GRAVITY POSITION IS INDICATIVE FOR STANDARD BUILD WHEN IN POSITION SHOWN

RATIO	TURNS TO CLOSE	M.A.	WEIGHT EXCL. HW	MAX OUTPUT	MAX INPUT	X	Y	Z
78 : 1	19.5	27.5 ± 15%	60.5 kg 134 lbs.	8400 Nm 74346 lbf.in.	305 Nm 2704 lbf.in.	2 0.08"	41.8 1.64"	57.7 57.7"
DESCRIPTION			TORQUE			CENTRE OF GRAVITY		

AS PART OF CONTINUOUS PRODUCT DEVELOPMENT, ALL DETAILS SUBJECT TO CHANGE WITHOUT PRIOR NOTICE. FOR UP TO DATE DETAILS PLEASE VISIT www.rotork.com

 LOSSER - THE NETHERLANDS www.rotork.com	This drawing is confidential and is the property of Rotork Gears and must not be reproduced either wholly or partly. All rights in respect of patents, designs and copyrights are reserved. © 2018	Document Type GAD	Title GEARBOX AB6800SS RIGHT HANDED WITHOUT BORE AND PC	
		 Dimensions in mm Scale 1:4	Drawing Number PUB00341	
Created robbin.goosen	4-7-2018	Drawing Number PUB00341		
Checked Henk Hoff	4-7-2018	Sheet 1 of 1 Size A3		
Approved		Iss. 01		