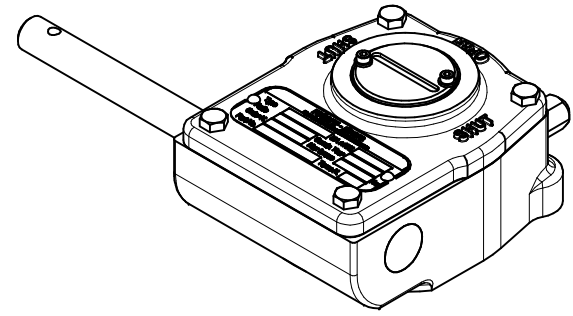
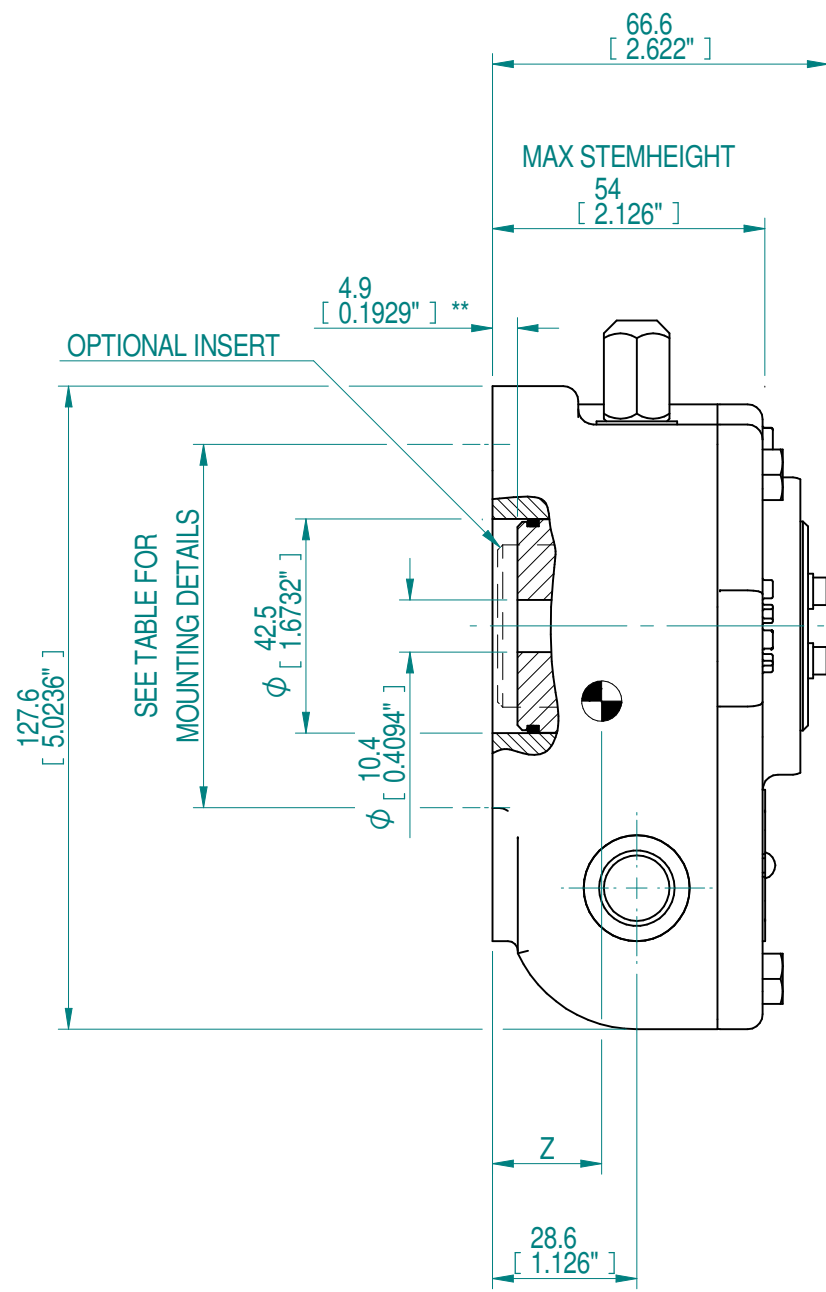
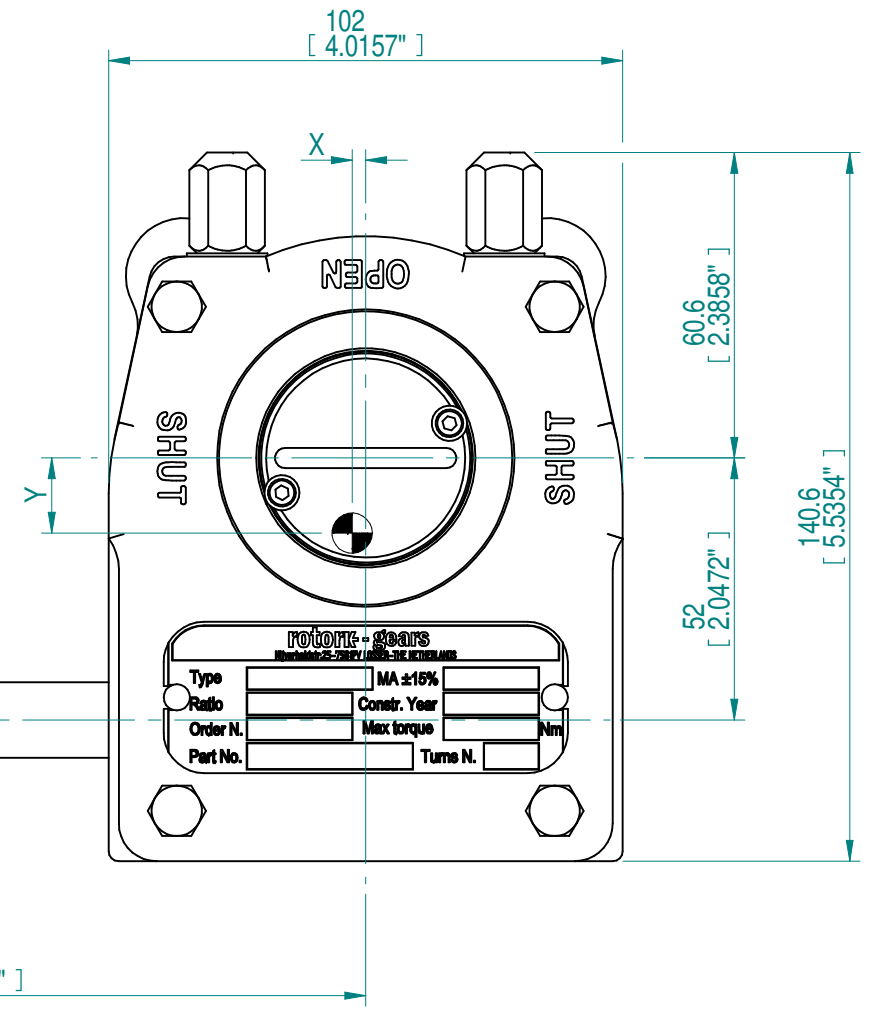
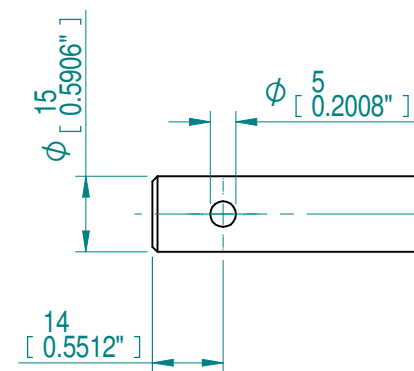


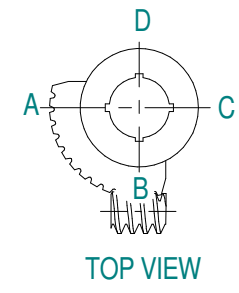
INPUT FLANGE DETAILS				MOUNTING HOLES - BOLT CIRCLE (OFF CENTRES)				STEM ACCEPTANCE IN ACCORDANCE TO STANDARD					
INPUT FLANGE	FLANGE O/DIA.	HOLE DETAILS (OFF CENTRES)	KEY DETAILS	ISO 5211 / MSS SP-101 MOUNTING OPTION	HOLE DETAILS (OFF CENTRES)	MAX OUTSIDE DIA. INCLUDING DRILLED HOLES	MIN INSIDE DIA. INCLUDING DRILLED HOLES	BORE MACHINED IN	STANDARD	MIN BORE	RECT. KEY MAX BORE	RECT. KEY SIZE	SQ BORE MAX
-	-	-	-	F05 (FA05)	4x M6* x 8 DEEP ON A Ø50P.C. (4x 1/4"UNC x 0.31" DEEP ON A Ø2"P.C.)	Ø112 (Ø4.41")	Ø44 (Ø1.73")	QUADRANT	DIN 6885	Ø10.4	Ø30	8 x 7	□ 24
-	-	-	F07 (FA07)	4x M8* x 11 DEEP ON A Ø70P.C. (4x 5/16"UNC x 0.43" DEEP ON A 2.75"P.C.)	BS46				Ø0.41"	Ø1.2175"	5/16 x 1/4	□ 0.94"	
-	-	-	F10 (FA10)	4x M10* x 13 DEEP ON A Ø102P.C. (4x 3/8"UNC x 0.51" DEEP ON A Ø4"P.C.)	DIN 6885			-	Ø20	6 x 6	□ 17		
-	-	-	-	-	-	-	-	INSERT	BS46	-	Ø0.7745"	1/4 x 1/4	□ 0.67"



ISOMETRIC VIEW
1:3



KEYWAY POSITION OF GEARBOX SHOWN IN CLOSED POSITION



- NOTES:
 1. * THREAD DEPTH DOES NOT MATCH ISO STANDARD
 2. ** DIMENSION WITH INSERT IS 1 [0.04"]
 3. CENTRE OF GRAVITY POSITION IS INDICATIVE FOR STANDARD BUILD WHEN IN POSITION SHOWN

RATIO	TURNS TO CLOSE	M.A.	WEIGHT EXCL. HW	MAX OUTPUT	MAX INPUT	X	Y	Z
37 : 1	9.25	11.6 ± 15%	4 kg 8 lbs.	500 Nm 4425 lbf.in.	43 Nm 381 lbf.in.	2.7 0.10"	14.9 0.59"	21.6 0.85"
DESCRIPTION			TORQUE			CENTRE OF GRAVITY		

AS PART OF CONTINUOUS PRODUCT DEVELOPMENT, ALL DETAILS SUBJECT TO CHANGE WITHOUT PRIOR NOTICE. FOR UP TO DATE DETAILS PLEASE VISIT www.rotork.com

 LOSSER - THE NETHERLANDS www.rotork.com	This drawing is confidential and is the property of Rotork Gears and must not be reproduced either wholly or partly. All rights in respect of patents, designs and copyrights are reserved. © 2018		Document Type GAD	Title GEARBOX AB215SS RIGHT HANDED WITHOUT BORE AND PC	
	Dimensions in mm Scale 1:1.5		Drawing Number PUB00051		Iss. 01
Created robbin.goosen Checked Henk Hoff Approved	4-7-2018 4-7-2018	Sheet 1 of 1		Size A3	