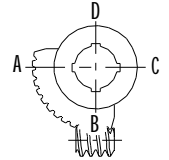


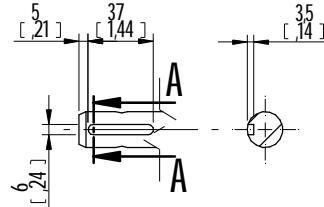
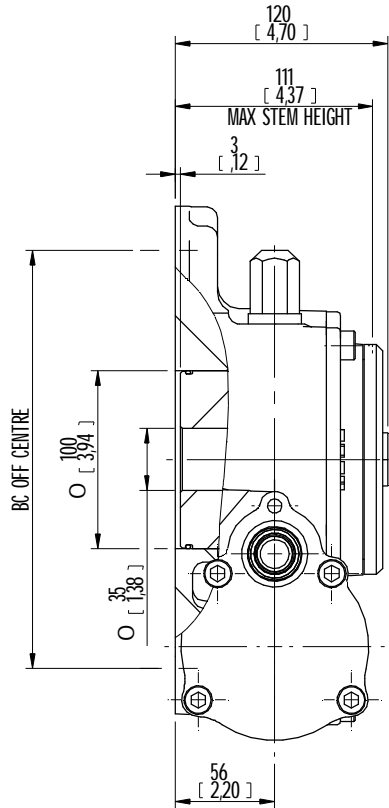
1		2		3			4			5			6			7			8		
DESCRIPTION										BORE: STEM ACCEPTANCE WITH KEYWAY IN ACCORDING WITH STANDARD			TORQUE								
RATIO	TURNS TO CLOSE	TRAVEL (1/4 TURN)	WEIGHT	NR of HOLES	MIN PCD - ØHOLE	MAX PCD + ØHOLE	ACCORDING TO ISO 5211 / MSS SP-101	MIN	MAX	STANDARD	OUTPUT	INPUT	MA								
109:1	27	-5° TO 95°	28 kg 62 lbs	4	Ø 145 mm	Ø 185 mm	F16	Ø35 mm	Ø90 mm	ISO 773 A	4500 Nm	136 Nm	33 ± 15%								
				8	Ø188 mm	Ø270 mm	F25														
				4	Ø 5.709 inch	Ø 7.283 inch	FA16														
				8	Ø7.40 inch	Ø10.62 inch	FA25														

AS PART OF CONTINUOUS PRODUCT DEVELOPMENT, ALL DETAILS SUBJECT TO CHANGE WITHOUT PRIOR NOTICE. FOR UP TO DATE DETAILS PLEASE VISIT www.rotork.com

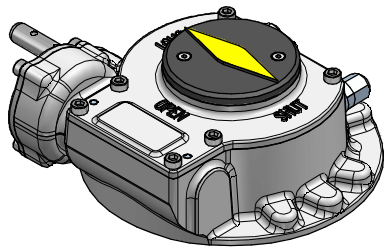
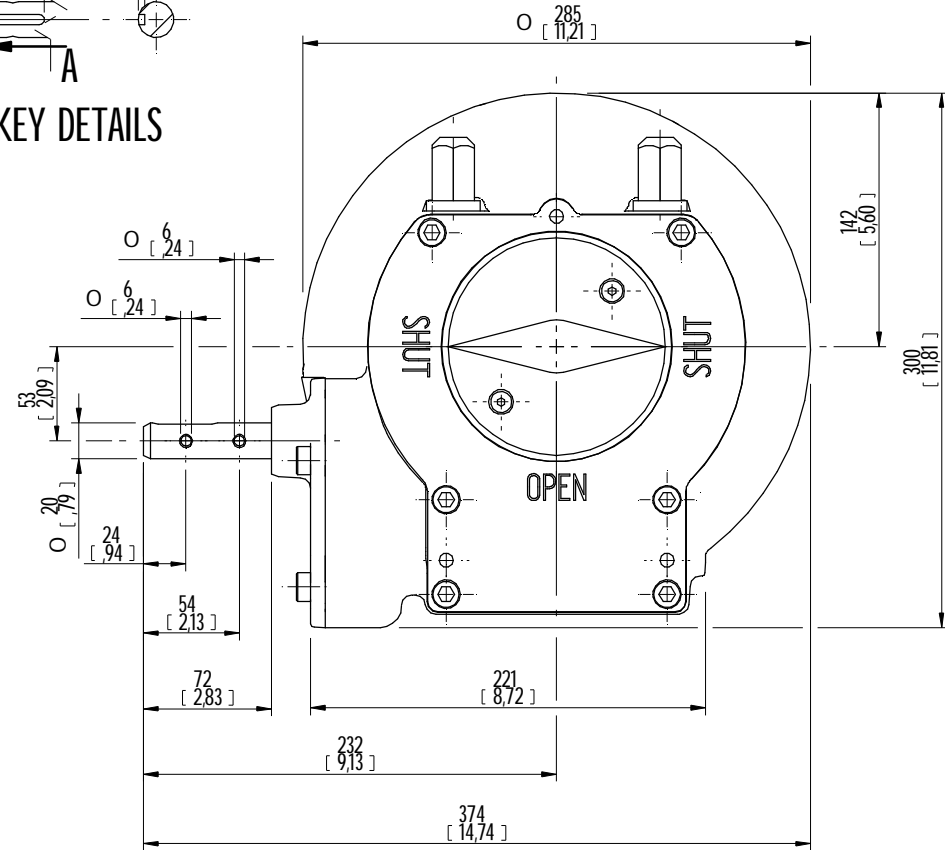
KEYWAY POSITION OF GEARBOX SHOWN IN CLOSED POSITION



TOP VIEW



KEY DETAILS



ISOMETRIC VIEW
1:5

	Document type DETAIL DRAWING		Title AB2000	
	Dimensions in mm Scale 1:3		AB2000 W-TYPE ASSEMBLY F25 BASE, RH PROJECTION	
Created	M R	11-12-2012	Drawing Number	
Checked	P LINE	28-2-2013	AB2000W RH LB	
Approved	-	DD-1111-YYYY	Sheet 1 of 3	Size A3

00				DD-1111-YYYY	FIRST ISSUE
Rev	CN	Revised	Approved	Date	Change Description