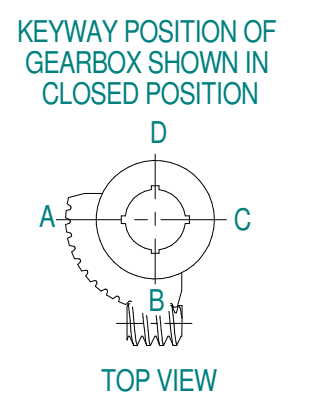
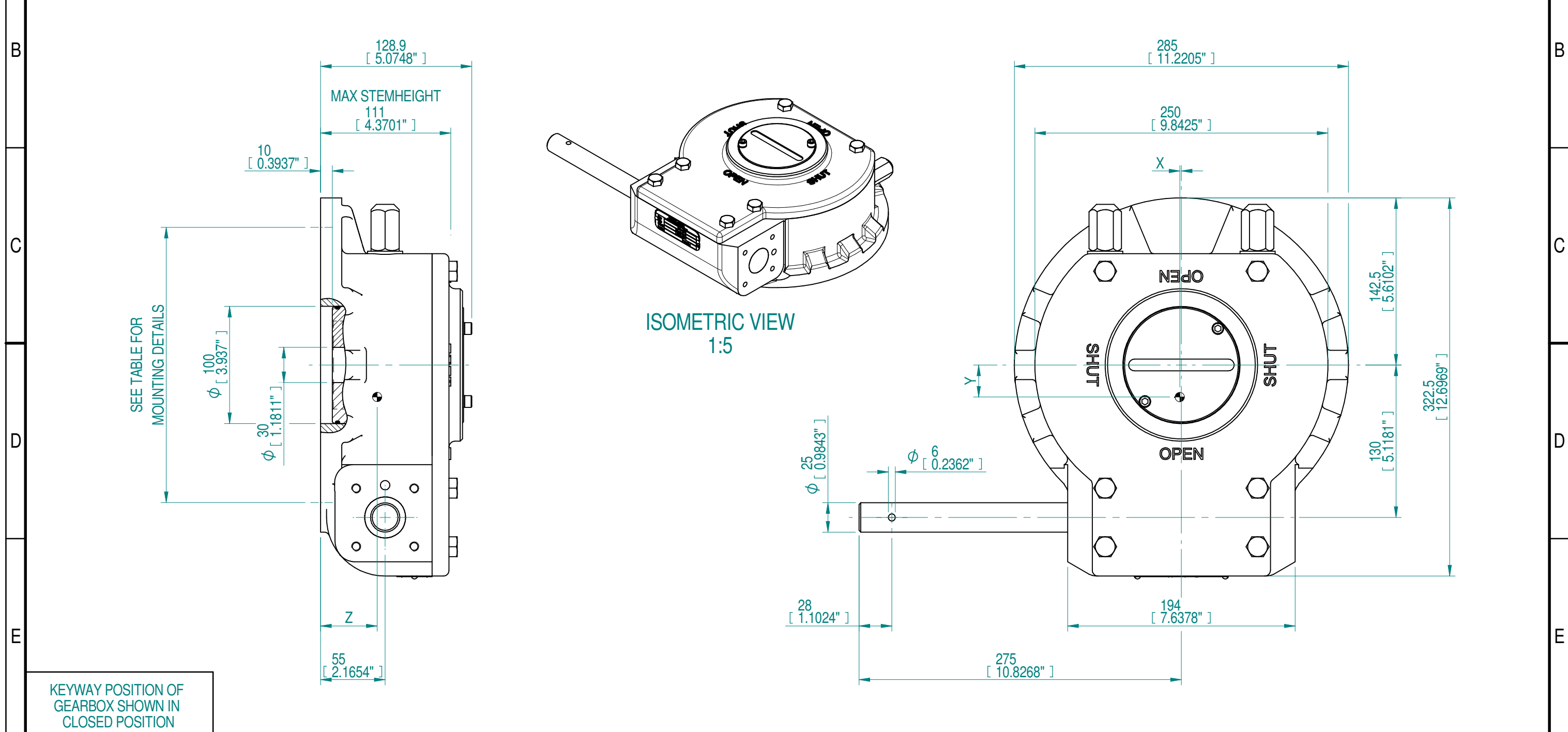


INPUT FLANGE DETAILS				MOUNTING HOLES - BOLT CIRCLE (OFF CENTRES)				STEM ACCEPTANCE IN ACCORDANCE TO STANDARD					
INPUT FLANGE	FLANGE O/DIA.	HOLE DETAILS (OFF CENTRES)	KEY DETAILS	ISO 5211 / MSS SP-101 MOUNTING OPTION	HOLE DETAILS (OFF CENTRES)	MAX OUTSIDE DIA. INCLUDING DRILLED HOLES	MIN INSIDE DIA. INCLUDING DRILLED HOLES	BORE MACHINED IN	STANDARD	MIN BORE	RECT. KEY MAX BORE	RECT. KEY SIZE	SQ BORE MAX
-	-	-	-	F12 (FA12)	4x M12* x 18 DEEP ON A Ø125P.C. (4x 1/2"UNC x 0.71" DEEP ON A 4.95"P.C.)	Ø272 (Ø10.71")	Ø104 (Ø4.09")	QUADRANT	DIN 6885	Ø30	Ø80	22 x 14	□ 60
				BS46	Ø1.18"				Ø3.0446"	7/8 x 5/8	□ 2.36"		
				INSERT	DIN 6885			-	Ø55	16 x 10	□ 46		
					BS46			-	Ø2.1352"	5/8 x 7/16	□ 1.81"		



NOTES:
 1. * THREAD DEPTH DOES NOT MATCH ISO STANDARD
 2. CENTRE OF GRAVITY POSITION IS INDICATIVE FOR STANDARD BUILD WHEN IN POSITION SHOWN

52 : 1	13	19 ± 15%	33.5 kg 74 lbs.	5500 Nm 48679 lbf.in.	289 Nm 2562 lbf.in.	1.4 0.05"	27.3 1.08"	48.2 1.9"
RATIO	TURNS TO CLOSE	M.A.	WEIGHT EXCL. HW	MAX OUTPUT	MAX INPUT	X	Y	Z
DESCRIPTION			TORQUE			CENTRE OF GRAVITY		

AS PART OF CONTINUOUS PRODUCT DEVELOPMENT, ALL DETAILS SUBJECT TO CHANGE WITHOUT PRIOR NOTICE. FOR UP TO DATE DETAILS PLEASE VISIT www.rotork.com

rotork Gears
 LOSSER - THE NETHERLANDS
www.rotork.com

This drawing is confidential and is the property of Rotork Gears and must not be reproduced either wholly or partly. All rights in respect of patents, designs and copyrights are reserved. © 2018

Document Type	GAD	Title	
Created	robbin.goosen	GEARBOX AB1950SS RIGHT HANDED WITHOUT BORE AND PC	
Checked	Henk Hoff	Drawing Number	
Approved		PUB00219	
Dimensions in mm		Scale 1:3.33	
Created 4-7-2018		Iss. 01	
Checked 4-7-2018		Sheet 1 of 1	
Approved		Size A3	