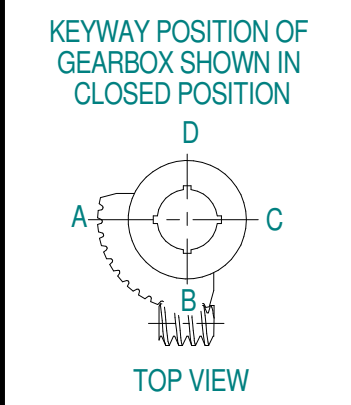
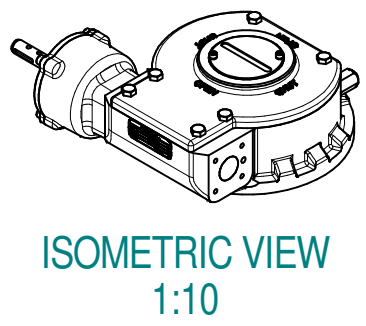
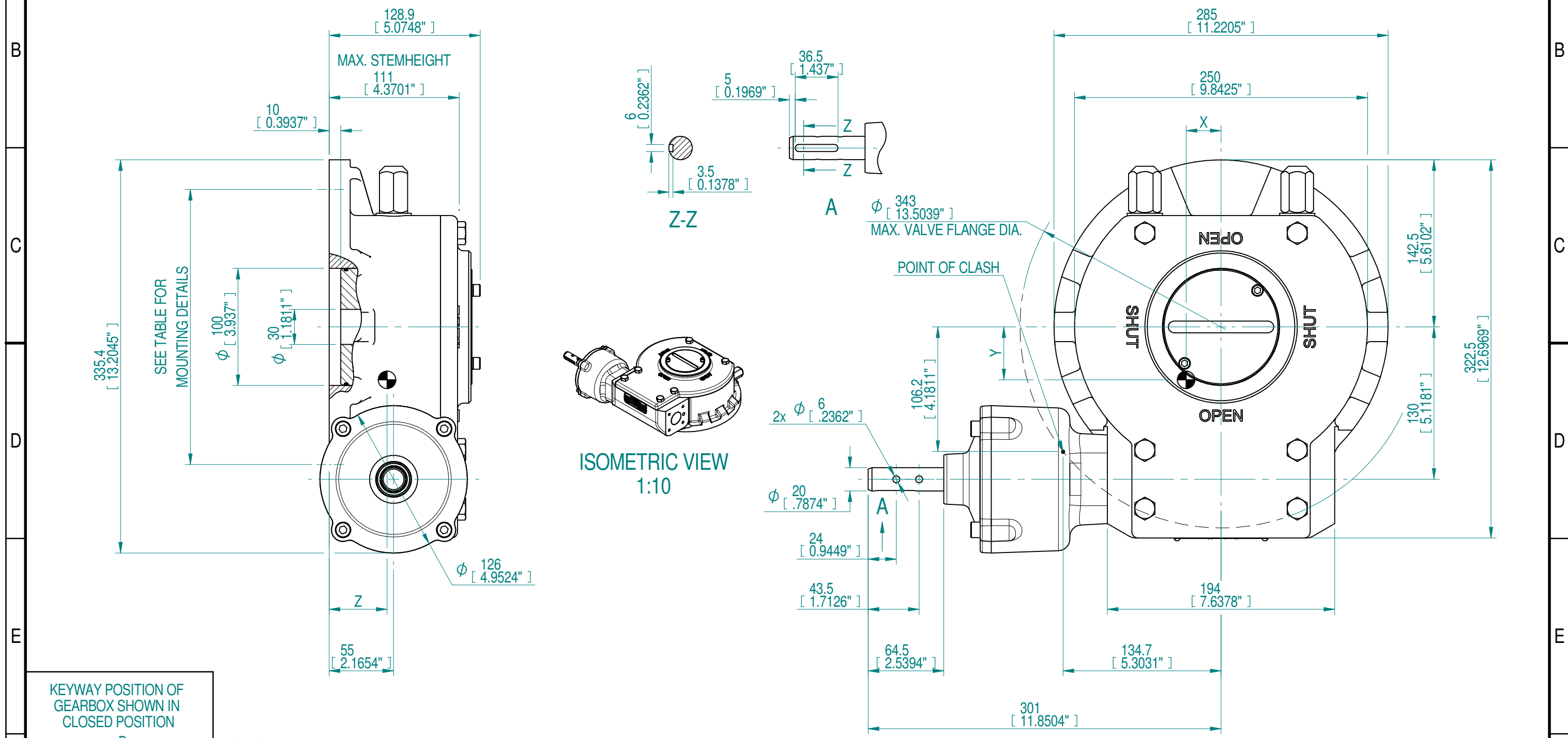


INPUT FLANGE DETAILS				MOUNTING HOLES - BOLT CIRCLE (OFF CENTRES)				STEM ACCEPTANCE IN ACCORDANCE TO STANDARD					
INPUT FLANGE	FLANGE O/DIA.	HOLE DETAILS (OFF CENTRES)	KEY DETAILS	ISO 5211 / MSS SP-101 MOUNTING OPTION	HOLE DETAILS (OFF CENTRES)	MAX OUTSIDE DIA. INCLUDING DRILLED HOLES	MIN INSIDE DIA. INCLUDING DRILLED HOLES	BORE MACHINED IN	STANDARD	MIN BORE	RECT. KEY MAX BORE	RECT. KEY SIZE	SQ BORE MAX
-	-	-	-	F12 (FA12)	4x M12* x 18 DEEP ON A Ø125P.C. (4x 1/2"UNC x 0.71" DEEP ON A 4.95"P.C.)	Ø272 (Ø10.71")	Ø104 (Ø4.09")	QUADRANT	DIN 6885	Ø30	Ø80	22 x 14	□ 60
				F14 (FA14)	4x M16* x 18 DEEP ON A Ø140P.C. (4x 5/8"UNC x 0.71" DEEP ON A 5.5"P.C.)				BS46	Ø1.18"	Ø3.0446"	7/8 x 5/8	□ 2.36"
				F16 (FA16)	4x M20* x 18 DEEP ON A Ø165P.C. (4x 3/4"UNC x 0.71" DEEP ON A 6.5"P.C.)				DIN 6885	-	Ø55	16 x 10	□ 46
				F25 (FA25)	8x M16* x 18 DEEP ON A Ø254P.C. (8x 5/8"UNC x 0.71" DEEP ON A 10"P.C.)				BS46	-	Ø2.1352"	5/8 x 7/16	□ 1.81"



NOTES:
 1. * THREAD DEPTH DOES NOT MATCH ISO STANDARD
 2. CENTRE OF GRAVITY POSITION IS INDICATIVE FOR STANDARD BUILD WHEN IN POSITION SHOWN

RATIO	TURNS TO CLOSE	M.A.	WEIGHT EXCL. HW	MAX OUTPUT	MAX INPUT	X	Y	Z
217 : 1	54.25	66 ± 15%	42.2 kg 92.9 lbs.	7000 Nm 61955 lbf.in.	106 Nm 939 lbf.in.	29.8 1.17"	45.1 1.78"	49.4 1.94"

AS PART OF CONTINUOUS PRODUCT DEVELOPMENT, ALL DETAILS SUBJECT TO CHANGE WITHOUT PRIOR NOTICE. FOR UP TO DATE DETAILS PLEASE VISIT www.rotork.com

rotork Gears
 LOSSER - THE NETHERLANDS
www.rotork.com

This drawing is confidential and is the property of Rotork Gears and must not be reproduced either wholly or partly. All rights in respect of patents, designs and copyrights are reserved. © 2018

Document Type	GAD	Title	GEARBOX AB1950SS-PR4 RIGHT HANDED WITHOUT BORE AND PCD	
Created	robbin.goosen	19-2-2018	Drawing Number	PUB01721
Checked	Henk Hoff	23-5-2018	Iss.	01
Approved			Sheet	1 of 2
			Size	A3