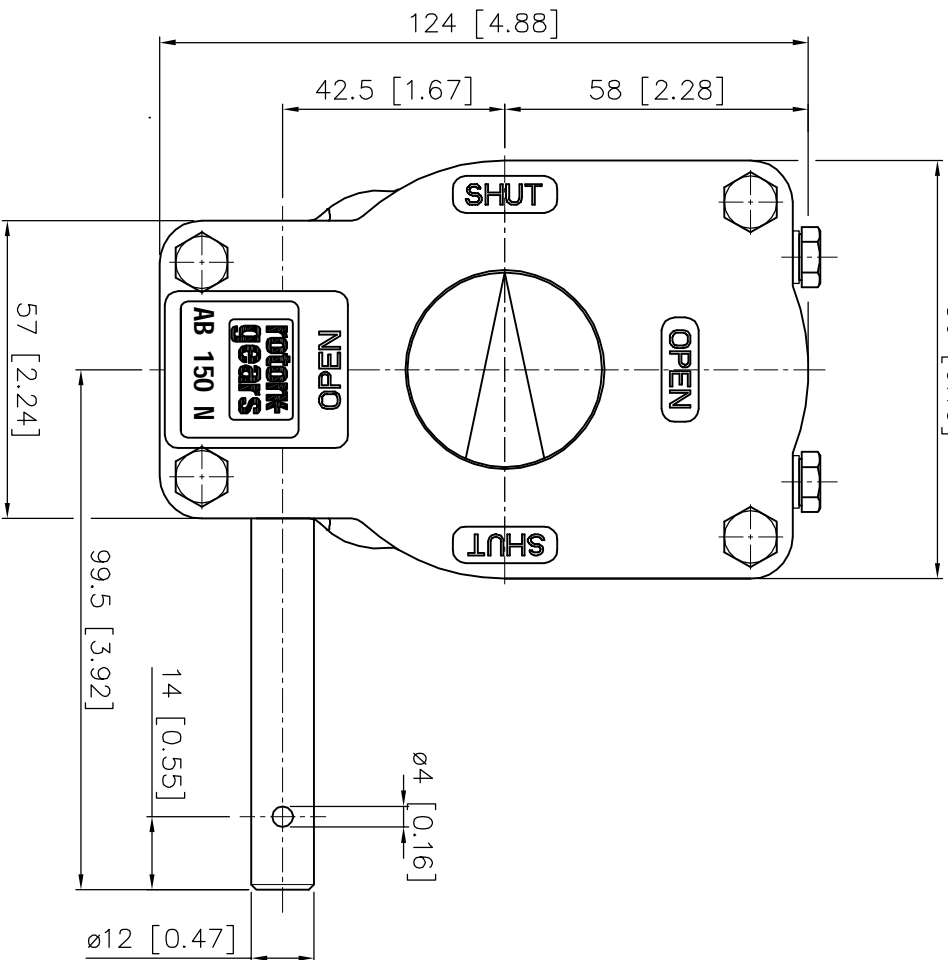
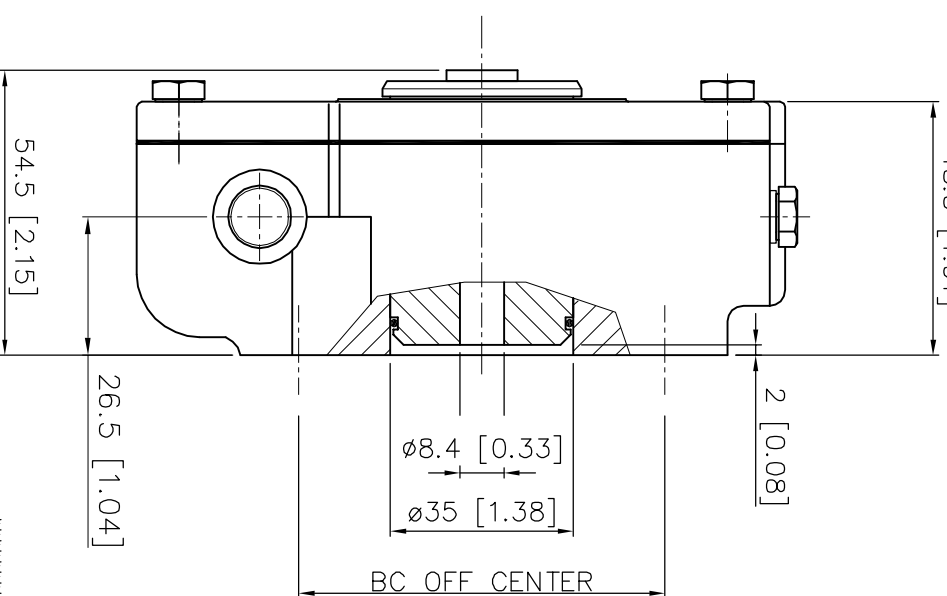


80 [3.15]



Max. STEM height
diameter dependable
48.5 [1.91]



DESCRIPTION

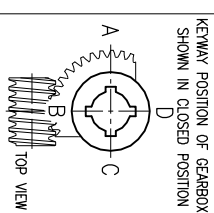
RATIO : 40 : 1
WEIGHT : 2.2 kg. (4.8 Lb) excl.handwheel

MOUNTINGHOLES

BOLT CIRCLE : min. $\phi 42$ [1.65]
(OFF CENTER) : max. $\phi 70$ [2.75]
dcc. ISO 5211 : F04 - F05 - F07
BORE : min. $\phi 8.4$ max. $\phi 20$ [0.79], #17 [0.67]

TORQUE

max.OUTPUT : 150 Nm (1328 lbf.in.)
max.INPUT : 16 Nm (138 lbf.in.)
M.A. : 9.6 $\pm 15\%$



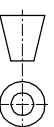
Dimensions in MM [inch]

rotork gears

Nijenhelderroot 25
7581 PV Losser
The Netherlands

GEARBOX AB 150 N 360°

THIS DOCUMENT IS PROPERTY OF ROTORK GEARS. NEITHER THIS OR ITS CONTENT MAY BE COPIED OR USED IN ANY OTHER WAY WITHOUT THE WRITTEN PERMISSION OF ROTORK GEARS. ANY REPRODUCTION OF THIS DOCUMENT SHALL CONSTITUTE A KNOWLEDGEABLE VIOLATION OF THE FOREGOING CONDITIONS



Drawn : R.K

Date : 17-10-03

Dwg Nr.: AB150 N 360°

Rev.: 05