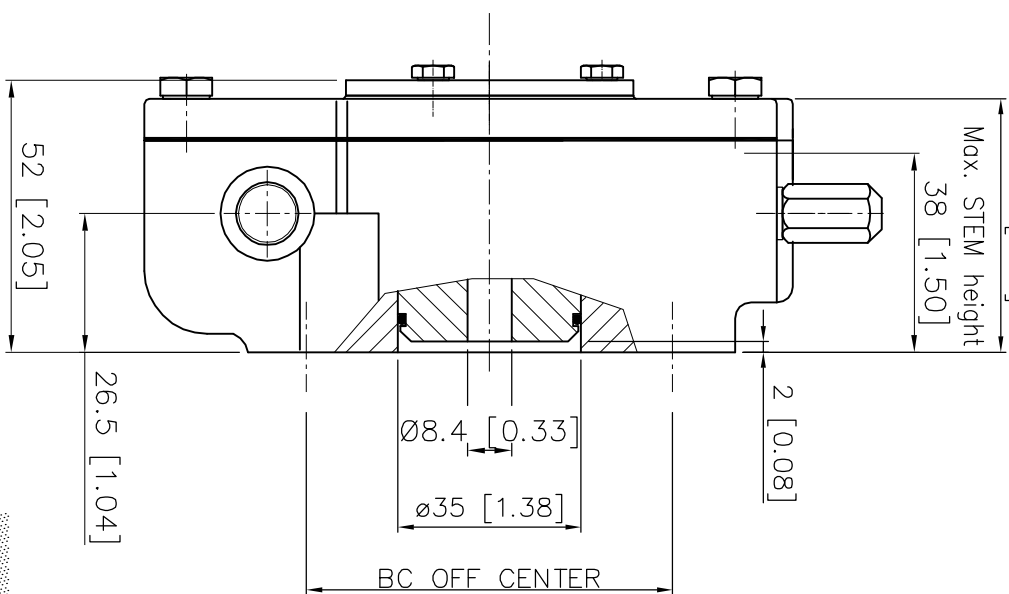
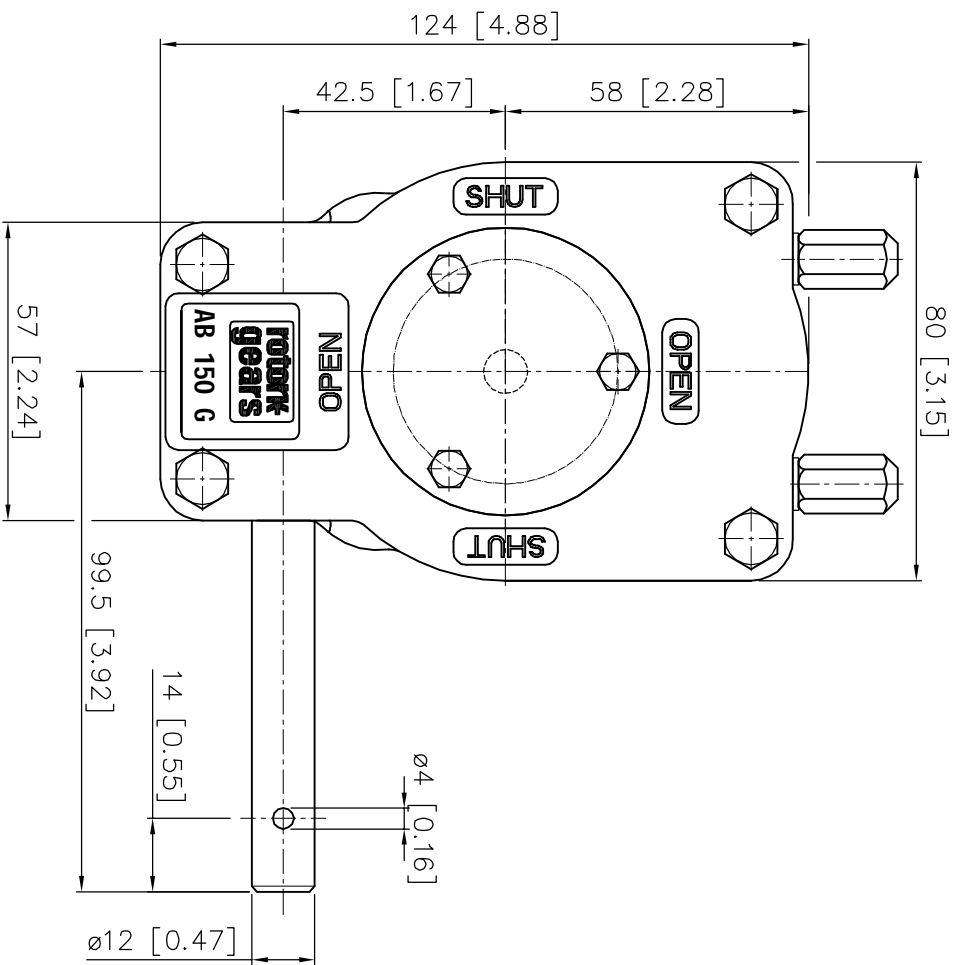


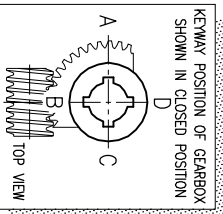
Max. STEM height
diameter dependdble
48.5 [1.91]



DESCRIPTION
 TRAVEL : -5° to 95° adjustable
 RATIO : 40 : 1
 TURNS TO CLOSE : 10
 WEIGHT : 2.2 kg. (4.8 Lb) excl.handwheel

MOUNTINGHOLES
 BOLT CIRCLE : min. $\varnothing 42$ [1.65]
 (OFF CENTER) : max. $\varnothing 70$ [2.75]
 acc. ISO 5211 : F04 - F05 - F07
 BORE : min. $\varnothing 8.4$ [0.33] max. $\varnothing 20$ [0.79], #17 [0.67]

TORQUE
 max.OUTPUT : 150 Nm (1328 lbf.in.)
 max.INPUT : 16 Nm (138 lbf.in.)
 M.A. : 9.6 \pm 15%



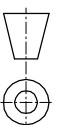
Dimensions in MM [inch]

rotork gears

Nijverheidstroet 25
 7581 PV Losser
 The Netherlands

GEARBOX AB 150 G LH BU

THIS DOCUMENT IS PROPERTY OF ROTORK GEARS. NEITHER THIS OR ITS CONTENT ANY BE COPIED OR USED IN ANY OTHER WAY PERMITTED
 TO THE INTEREST OF ROTORK GEARS, ACCEPTANCE OF THIS DOCUMENT SHALL CONSTITUTE ACKNOWLEDGEMENT OF THE FOREGOING CONDITIONS



Drawn : N.M

Date : 12-03-12

Dwg Nr.: D01G-002

Rev.: 00